



**Delaware Weekly Influenza Report**  
**Week 42 (October 13 – October 19, 2013)**  
**Delaware Division of Public Health**

**National Synopsis 2013 – 2014**

National data are updated Friday of each week. Please visit <http://www.cdc.gov/flu/weekly/> for the most current information. Briefly, influenza activity remained low in the United States with nearly all states reporting no to sporadic influenza activity (local activity was reported in Alabama, Mississippi, and South Carolina). Both national and state data are provisional and subject to change as additional reports are received.

**Delaware Influenza Surveillance 2013 – 2014**

We are now in the second week of the flu season. There were no confirmed cases of influenza reported during week 42. Reports of influenza-like illness (ILI) received from participating providers, facilities, and institutions indicated no to relatively low levels of ILI in the community. Levels of ILI were below the regional baseline of 2.0%.

**Level of Influenza Activity in Delaware, Week 42:**

<b>No activity</b>	No laboratory-confirmed cases of influenza and no reported increase in the number of cases of ILI.
--------------------	--

Influenza-like illness (ILI) is defined as patients presenting with fever of 100° F or greater, cough and/or sore throat in the absence of a known cause other than influenza.

- No Activity:** No laboratory-confirmed cases of influenza and no reported increase in the number of cases of ILI.
- Sporadic:** Small numbers of laboratory-confirmed influenza cases or a single laboratory-confirmed influenza outbreak has been reported, but there is no increase in cases of ILI.
- Local:** Outbreaks of influenza or increases in ILI cases and recent laboratory-confirmed influenza in a single region of the state.
- Regional:** Outbreaks of influenza or increases in ILI and recent laboratory confirmed influenza in at least two but less than half the regions of the state with recent laboratory evidence of influenza in those regions.
- Widespread:** Outbreaks of influenza or increases in ILI cases and recent laboratory-confirmed influenza in at least half the regions of the state with recent laboratory evidence of influenza in the state.

**Table 1a. Influenza positive<sup>1</sup> cases reported<sup>2</sup>, statewide and by county.**

Confirmed Flu Cases by Subtype		Wk 40	Wk 41	Wk 42	YTD	YTD Total	YTD County%
Statewide	A (2009 H1)	0	0	0	0	0	0
	A (H3)	0	0	0	0		
	A (subtyping not performed)	0	0	0	0		
	B	0	0	0	0		
New Castle County	A (2009 H1)	0	0	0	0	0	0
	A (H3)	0	0	0	0		
	A (subtyping not performed)	0	0	0	0		
	B	0	0	0	0		
Kent County	A (2009 H1)	0	0	0	0	0	0
	A (H3)	0	0	0	0		
	A (subtyping not performed)	0	0	0	0		
	B	0	0	0	0		
Sussex County	A (2009 H1)	0	0	0	0	0	0
	A (H3)	0	0	0	0		
	A (subtyping not performed)	0	0	0	0		
	B	0	0	0	0		

**Table 1b. Age subgroup-specific influenza positive cases.**

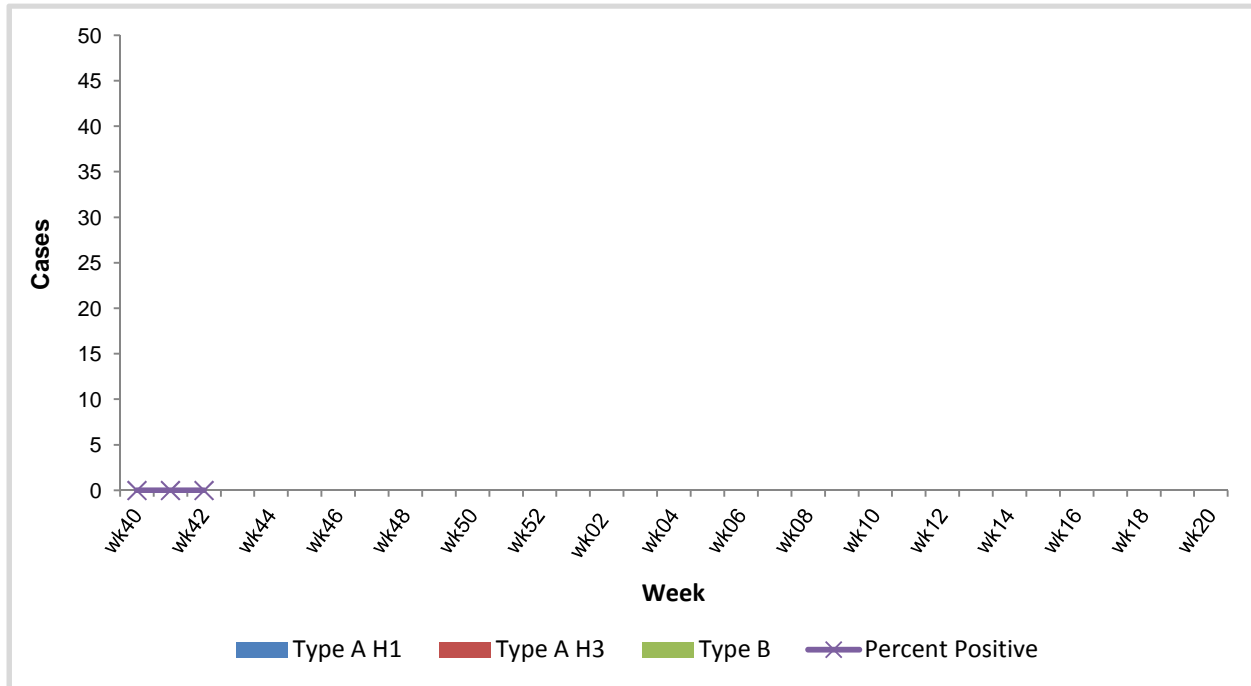
Confirmed Flu Cases by Age Group		Wk 40	Wk 41	Wk 42	YTD	YTD Total	YTD County%
Statewide	0-4 years	0	0	0	0	0	0
	5-24 years	0	0	0	0		
	25-49 years	0	0	0	0		
	50-64 years	0	0	0	0		
	65+ years	0	0	0	0		
New Castle County	0-4 years	0	0	0	0	0	0
	5-24 years	0	0	0	0		
	25-49 years	0	0	0	0		
	50-64 years	0	0	0	0		
	65+ years	0	0	0	0		
Kent County	0-4 years	0	0	0	0	0	0
	5-24 years	0	0	0	0		
	25-49 years	0	0	0	0		
	50-64 years	0	0	0	0		
	65+ years	0	0	0	0		
Sussex County	0-4 years	0	0	0	0	0	0
	5-24 years	0	0	0	0		
	25-49 years	0	0	0	0		
	50-64 years	0	0	0	0		
	65+ years	0	0	0	0		

<sup>1</sup> Based on patients with positive nucleic acid or viral culture test results reported to the Division of Public Health.

<sup>2</sup> Reports are by date of specimen collection, not the date the results are obtained. As a result, prior weeks' counts may be adjusted to reflect additional cases received.

<sup>3</sup> MMWR Week 42= October 13- October 19, 2013.

**Figure 1. Confirmed cases<sup>1</sup> of influenza by type and subtype, Delaware 2013-2014 Influenza Season.**



<sup>1</sup> Based on patients with positive nucleic acid or viral culture test results reported to the Delaware Division of Public Health. There are no confirmed cases of influenza reported as of MMWR 42.

**Table 2. Influenza-related hospitalizations, Delaware**

Flu Related Hospitalizations		Wk 40	Wk 41	Wk 42	YTD	YTD Total	YTD County %
Statewide	0-4 years	0	0	0	0	0	0
	5-24 years	0	0	0	0		
	25-49 years	0	0	0	0		
	50-64 years	0	0	0	0		
	65+ years	0	0	0	0		
New Castle County	0-4 years	0	0	0	0	0	0
	5-24 years	0	0	0	0		
	25-49 years	0	0	0	0		
	50-64 years	0	0	0	0		
	65+ years	0	0	0	0		
Kent County	0-4 years	0	0	0	0	0	0
	5-24 years	0	0	0	0		
	25-49 years	0	0	0	0		
	50-64 years	0	0	0	0		
	65+ years	0	0	0	0		
Sussex County	0-4 years	0	0	0	0	0	0
	5-24 years	0	0	0	0		
	25-49 years	0	0	0	0		
	50-64 years	0	0	0	0		
	65+ years	0	0	0	0		

**Table 3. Influenza-related deaths, Delaware**

Flu- Related Deaths	Wk 40	Wk 41	Wk 42	Cumulative as of Wk 42
	0	0	0	0

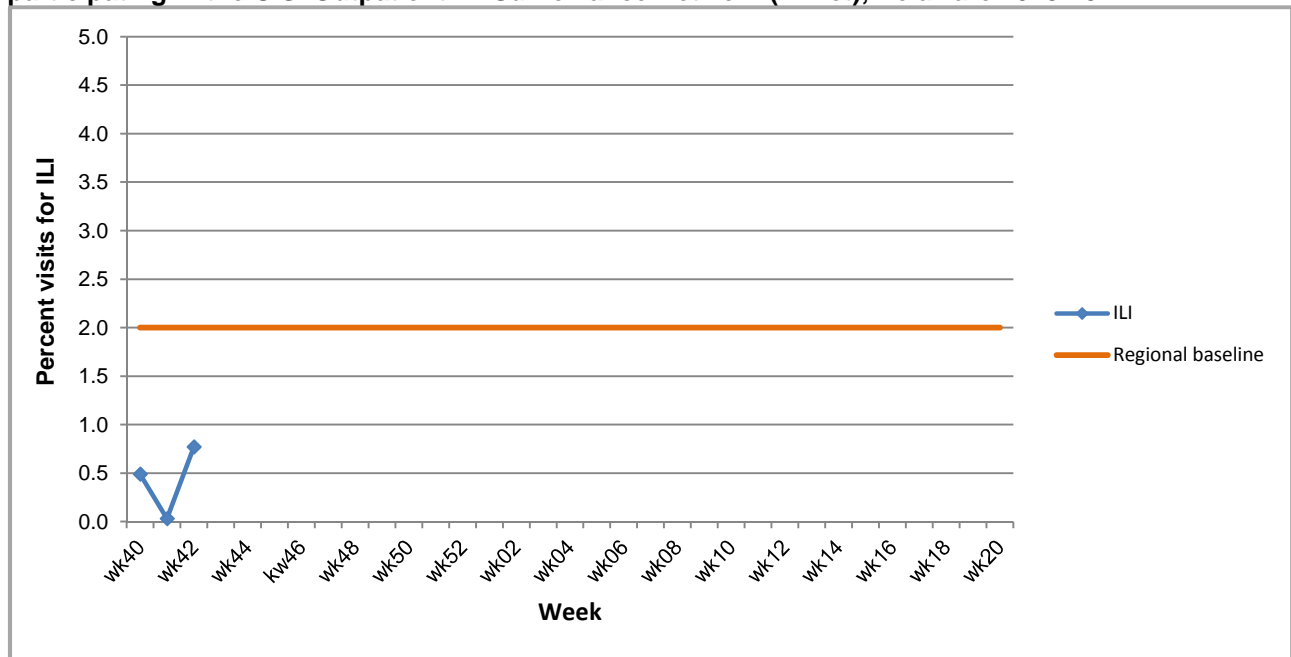
**Table 4. Annual number of influenza cases reported by flu season, Delaware 2004 – 2013.**

Influenza Season	Annual Flu Case Totals
2004 – 2005	995
2005 – 2006	541
2006 – 2007	508
2007 – 2008	1401
2008 – 2009	738
2009 – 2010	2247
2010 – 2011	1470
2011 – 2012	262
2012 – 2013	1773
2013 – 2014 (YTD)	0

**U.S. Outpatient Influenza-like Illness Surveillance Network (ILINet) (Sentinel) Provider Surveillance Network:**

An ILINet (sentinel) provider conducts surveillance of influenza-like illness (ILI) in collaboration with the Division of Public Health and the Centers for Disease Control and Prevention (CDC). Data reported by ILINet providers, in combination with other influenza surveillance data, provide a national and statewide picture of influenza activity in the U.S.

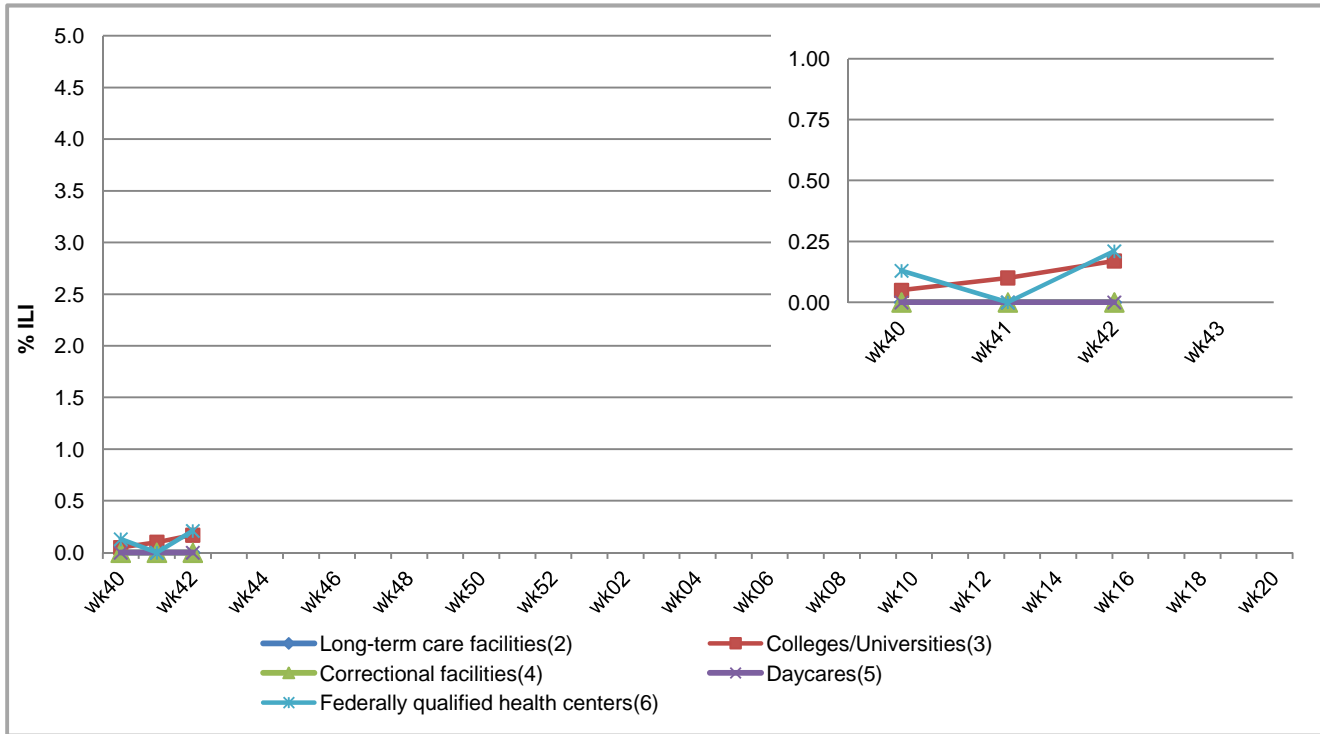
**Figure 2. Percentage of visits for influenza-like illness (ILI) reported by sentinel healthcare providers<sup>1</sup> participating in the U.S. Outpatient ILI Surveillance Network (ILINet), Delaware 2013-2014.**



<sup>1</sup> Eleven of 20 sentinel providers reported during Week 42.

<sup>2</sup> Regional baseline is calculated by CDC using non-influenza weeks from the previous 3 influenza seasons. Delaware is a member of Region 3 and includes DE, DC, MD, PA, VA, and WV. Regional baseline= 2.0%.

**Figure 3. Influenza-Like Illness (ILI) reported by influenza surveillance reporting partners<sup>1</sup>, Delaware 2013-2014.**



<sup>1</sup> Reporting partners include long-term care facilities, colleges and universities, correctional facilities, daycares, and federally qualified health centers.

<sup>2</sup> % ILI= percentage of residents with ILI symptoms. Six of 19 LTCFs reported for MMWR 42.

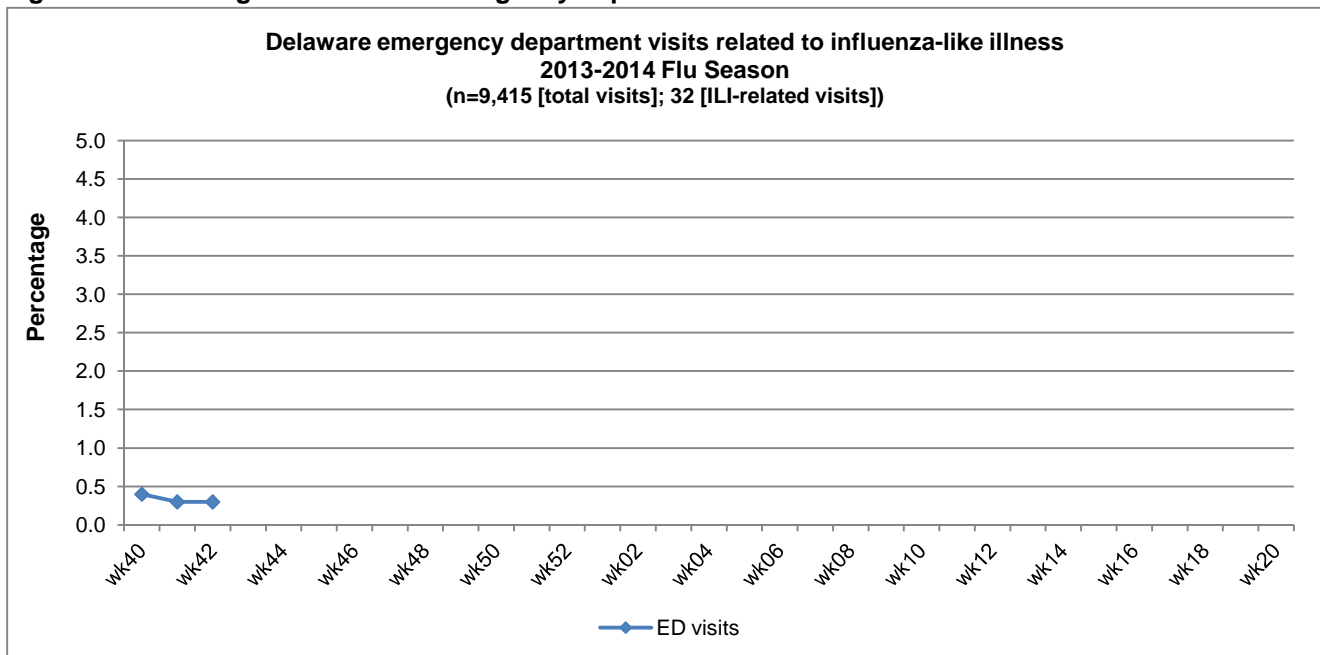
<sup>3</sup> % ILI= percentage of student visits for ILI; Schools reporting include the University of Delaware, Delaware State University, and Wesley College.

<sup>4</sup> % ILI= percentage of visits for ILI at the correctional facility; Nine of 10 facilities reported for MMWR 42.

<sup>5</sup> % ILI= percentage of children absent with ILI; Seven of 12 daycare providers reported for MMWR 42.

<sup>6</sup> % ILI= percentage of visits for ILI at FQHCs; FQHCs reporting include LARED and Henrietta Johnson Medical Center.

**Figure 4. Percentage of Delaware emergency department visits related to ILI illness.**



**NOTE:** Data provided do not reflect the total number of individuals who have been infected with the influenza virus in Delaware during the reporting period as a result of the following factors:

- Many people ill with influenza-like symptoms do not seek medical care.
- Many who do seek medical care are not tested for influenza.
- The Delaware Public Health Laboratory (DPHL) is limited by capacity to processing a maximum of 3 specimens per day from each reporting entity.

The Division of Public Health (DPH) is committed to serving you better. Please visit us at [flu.delaware.gov](http://flu.delaware.gov) or <http://dhss.delaware.gov/dhss/dph/dpc/immunize-flu.html> for general information on the flu or specific information on DPH flu clinics. For questions on Delaware's weekly flu report, please call the Office of Infectious Disease Epidemiology at 302-744-1033. For questions regarding influenza vaccination information, please call 302-744-1060.