



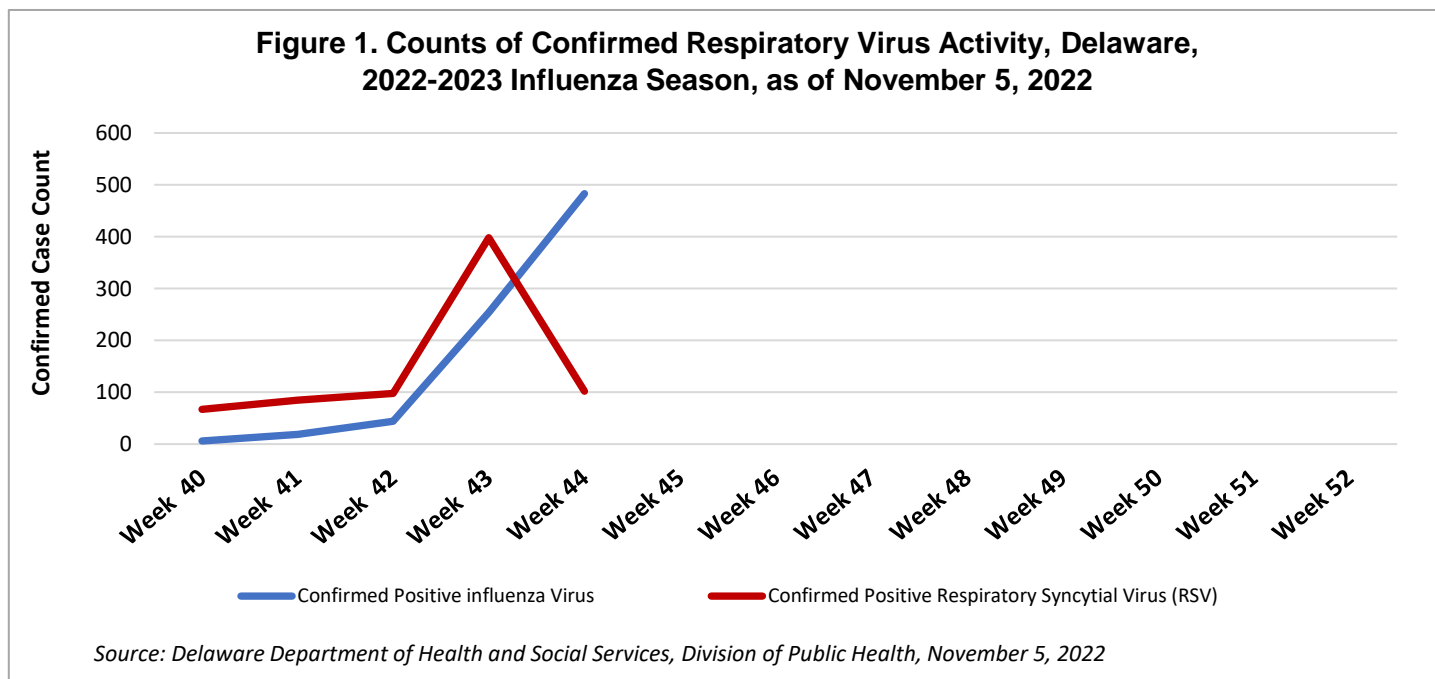
Delaware Supplemental Viral Respiratory Report

MMWR Week 44 (October 30, 2022 to November 5, 2022)

Summary: On November 3, 2022, Delaware moved influenza reporting to the [My Healthy Community \(delaware.gov\)](https://myhealthycommunity.delaware.gov) online dashboard, which includes data on cases, hospitalizations and vaccination. The Delaware Supplemental Viral Respiratory Report was created to provide additional information to stakeholders on other viral respiratory diseases such as Respiratory Syncytial Virus (RSV) and other respiratory viruses that may be actively circulating in Delaware.

RSV and other respiratory viruses such as parainfluenza, adenovirus, rhinovirus, enterovirus and human metapneumovirus are not reportable to the Delaware Division of Public Health (DPH). However, DPH strongly encourages providers to report positive laboratory reports of RSV in order to better understand the burden of disease in the community. The Office of Infectious Disease Epidemiology conducts surveillance of these diseases by using a combination of lab-based surveillance (from providers who voluntarily report) and syndromic surveillance. The latter is performed by reviewing ICD-10 codes and chief complaints from outpatient, inpatient, and emergency department (ED) patient visits associated to those diseases.

During MMWR week 44, there were **104** laboratory-confirmed cases of RSV reported among Delaware residents with **505** total cases for the 2022-2023 season.



*RSV data is limited and is not representative of cases state-wide



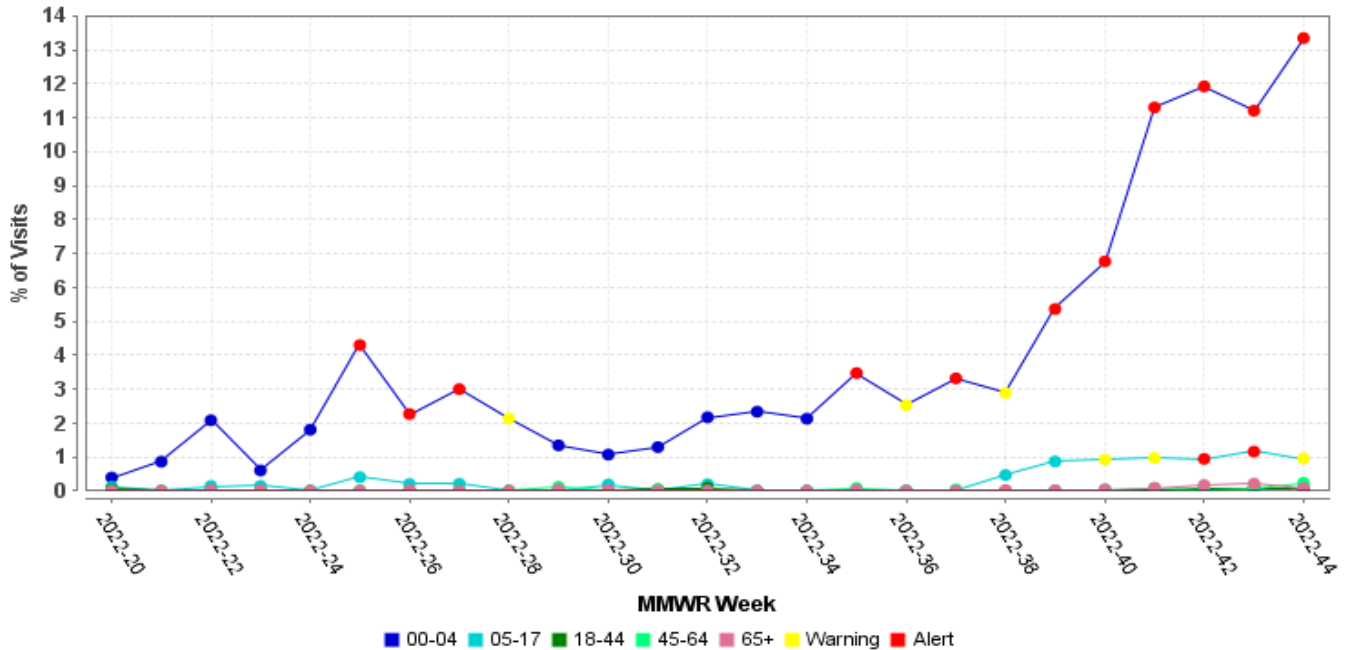
Delaware Supplemental Viral Respiratory Report

MMWR Week 44 (October 30, 2022 to November 5, 2022)

Figure 2: Percentage of Patient RSV¹ related Visits Stratified by Age

MMWR Week 20 to MMWR Week 44, Delaware 2022-2023

Weekly Percentage of RSV Related Hospital Visits (Stratification : Age Group)



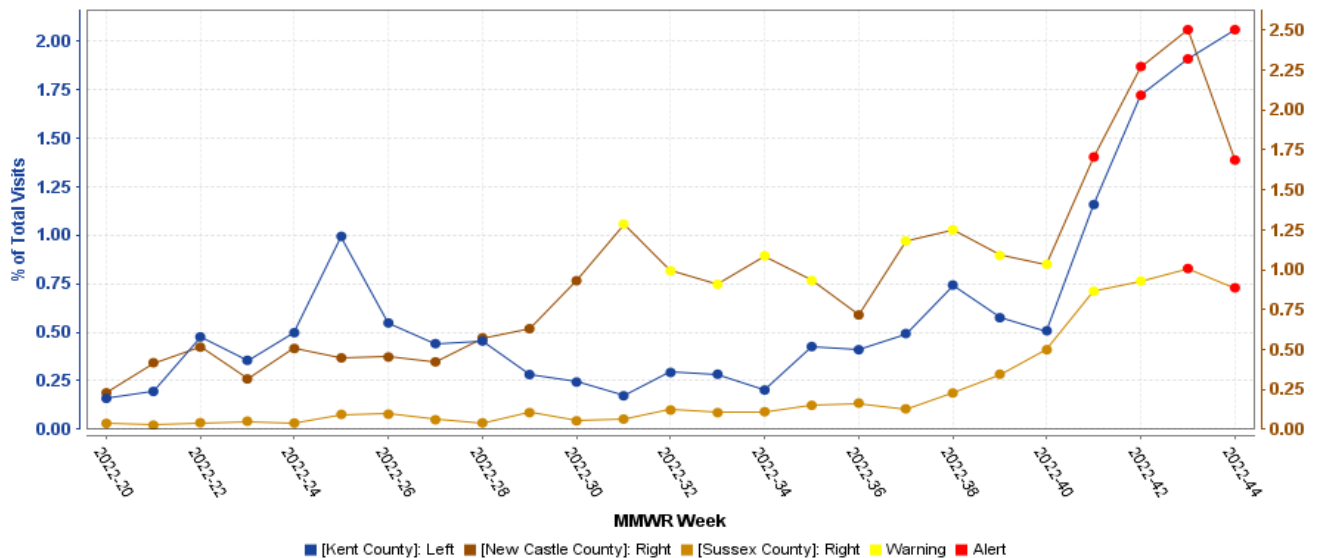
Source: Delaware Department of Health and Social Services, Division of Public Health ESSENCE, November 04, 2022

¹The syndrome is defined a combination of chief complaints and discharge diagnoses

Figure 3: Percentage of Patient RSV¹ related Visits Stratified by County

MMWR Week 20 to MMWR Week 44, Delaware 2022-2023

RSV Hospitalization Percentage by County (all patient classes)



Source: Delaware Department of Health and Social Services, Division of Public Health ESSENCE, November 04, 2022

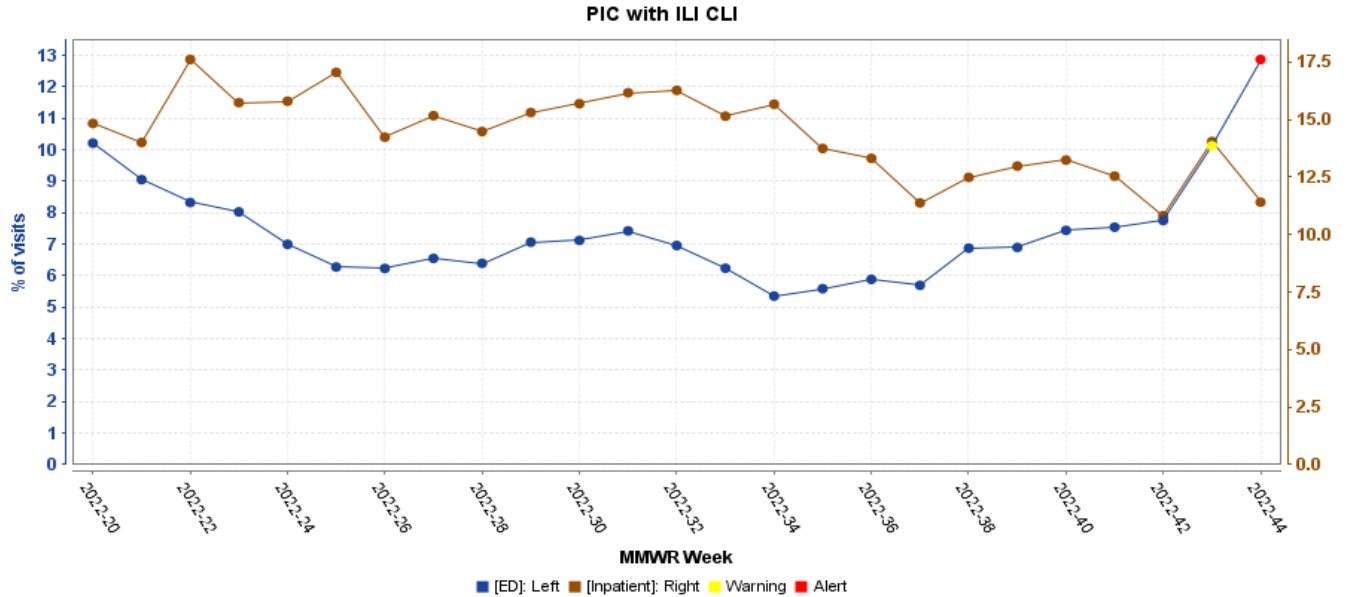
¹The syndrome query is defined a combination of chief complaints and discharge diagnoses and includes all patient classes



Delaware Supplemental Viral Respiratory Report

MMWR Week 44 (October 30, 2022 to November 5, 2022)

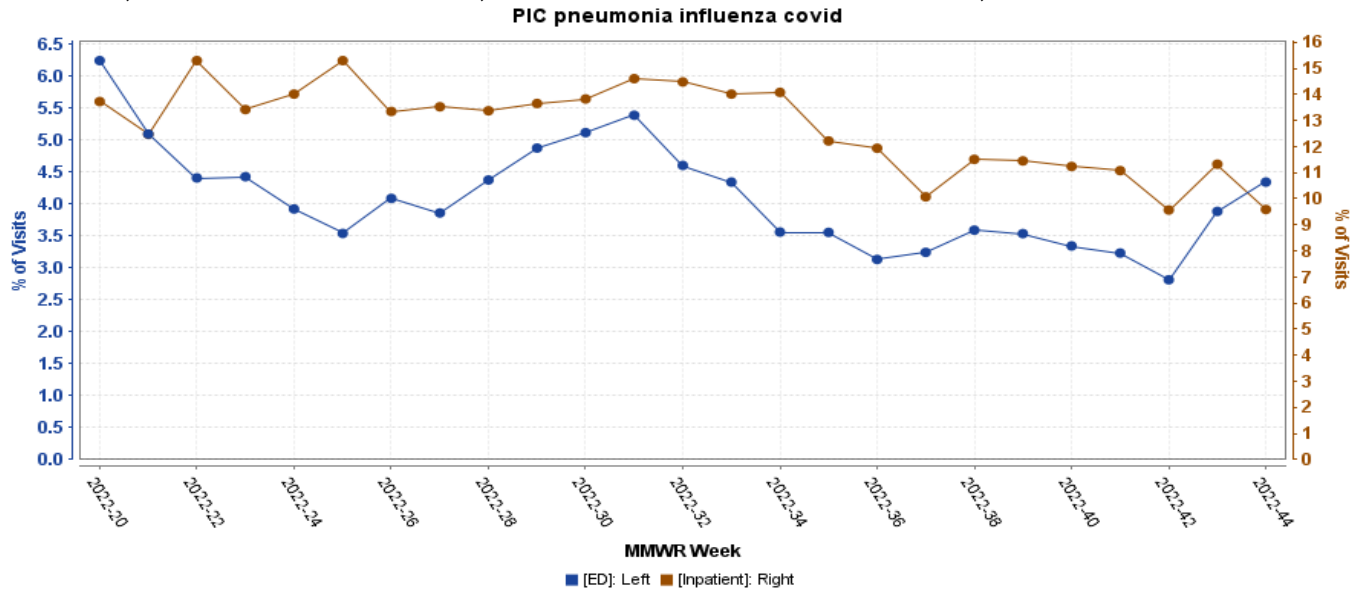
Figure 4: Percentage of Emergency Care Visits Versus Inpatient Visits Due to Pneumonia, Influenza-like Illness, and COVID-like Illness combined¹, MMWR Week 20 to MMWR Week 44, Delaware 2022-2023



Source: Delaware Department of Health and Social Services, Division of Public Health ESSENCE, November 04, 2022

¹The syndrome query is defined a combination of chief complaints and discharge diagnoses

Figure 5: Percentage of Emergency Care Visits versus Inpatient visits Due to Pneumonia, Influenza, and COVID-19 combined¹, MMWR Week 20 to MMWR Week 44, Delaware 2022-2023



Source: Delaware Department of Health and Social Services, Division of Public Health ESSENCE, November 04, 2022

¹The syndrome query is defined a combination of chief complaints and discharge diagnoses

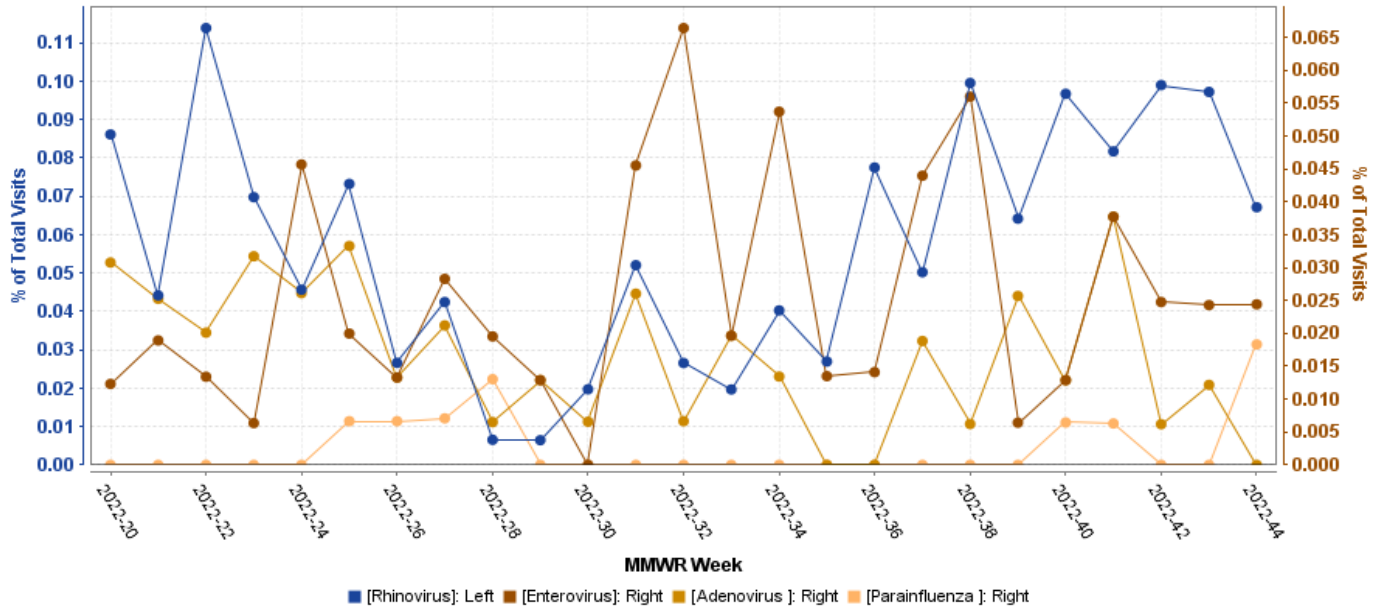


Delaware Supplemental Viral Respiratory Report

MMWR Week 44 (October 30, 2022 to November 5, 2022)

Figure 6: Percentage of Hospital Visits due to Rhinovirus, Adenovirus, Parainfluenza, and Enterovirus¹

MMWR Week 20 - MMWR Week 44, Delaware 2022-2023
Additional Respiratory Viruses Hospital Visits Percentages



Source: Delaware Department of Health and Social Services, Division of Public Health ESSENCE, November 04, 2022

¹The syndrome query is defined a combination of chief complaints and discharge diagnoses and includes all patient classes

Resources:

- **Past reports and details of Delaware’s influenza surveillance and vaccination locations:** [Flu.delaware.gov](https://flu.delaware.gov)
- **Global influenza surveillance data:** <https://www.who.int/teams/global-influenza-programme/surveillance-and-monitoring/influenza-updates>
- **National influenza surveillance data:** <https://www.cdc.gov/flu/weekly/>
- For more data on Delaware Flu cases, including Hospitalizations and vaccinations breakdowns go to [My Healthy Community \(delaware.gov\)](https://myhealthycommunity.delaware.gov)
- To report cases of RSV or for additional information on surveillance of respiratory viruses, contact the Office of Infectious Disease Epidemiology at 888-295-5156, reportdisease@delaware.gov, fax 302-622-4149.