

DELAWARE VITAL STATISTICS ANNUAL REPORT MORTALITY, 2016



Suggested Citation:

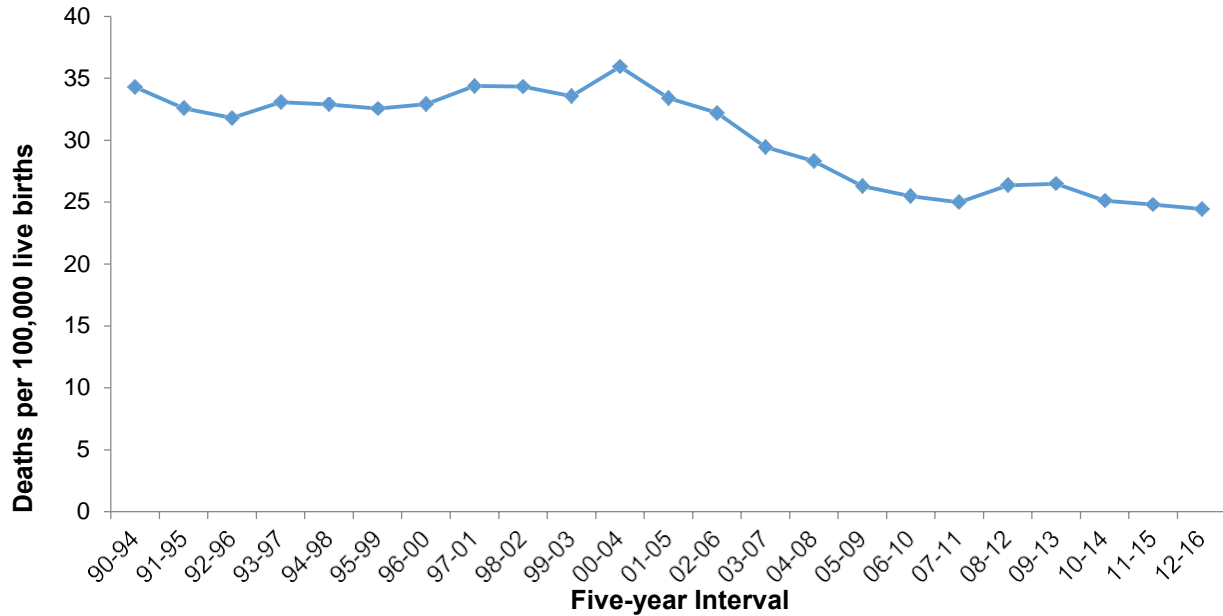
Delaware Health Statistics Center. *Delaware Vital Statistics Annual Report, 2016*.
Delaware Health and Social Services, Division of Public Health: 2018.

CHILD MORTALITY

For 2012-2016, 275 children and adolescents between the ages of 1 and 19 died in Delaware, representing 0.7 percent of the total deaths that occurred during that time. Males accounted for 67 percent of all child deaths in 2012-2016.

After small fluctuations throughout the 1990s, the mortality rate for children ages 1 to 19 began to decline. Since its peak of 35.9 in 2000-2004, the rate has decreased 32 percent, to 24.5 deaths per 100,000 children in 2012-2016.

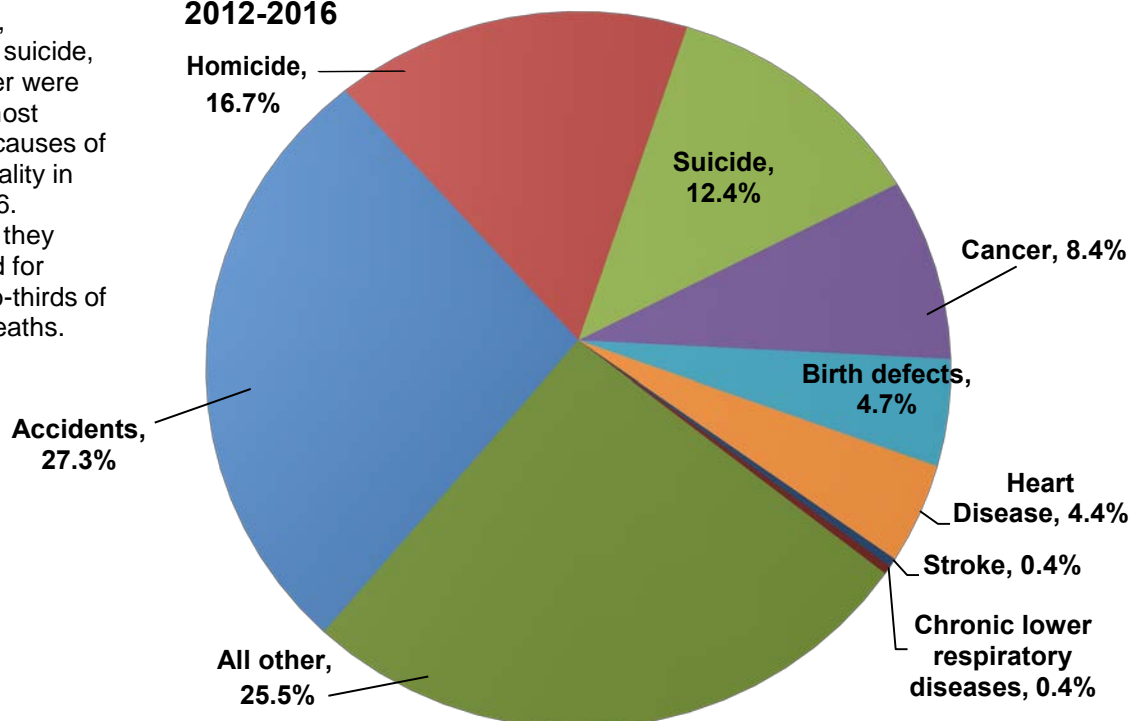
Figure 41. Five-year Average Child (1-19) Mortality Rates, Delaware, 1990-2016



Source: Delaware Department of Health and Social Services, Division of Public Health, Delaware Health Statistics Center

Figure 42. Leading Causes of Child Mortality, Delaware, 2012-2016

Accidents, homicide, suicide, and cancer were the four most common causes of child mortality in 2012-2016. Together, they accounted for nearly two-thirds of all child deaths.

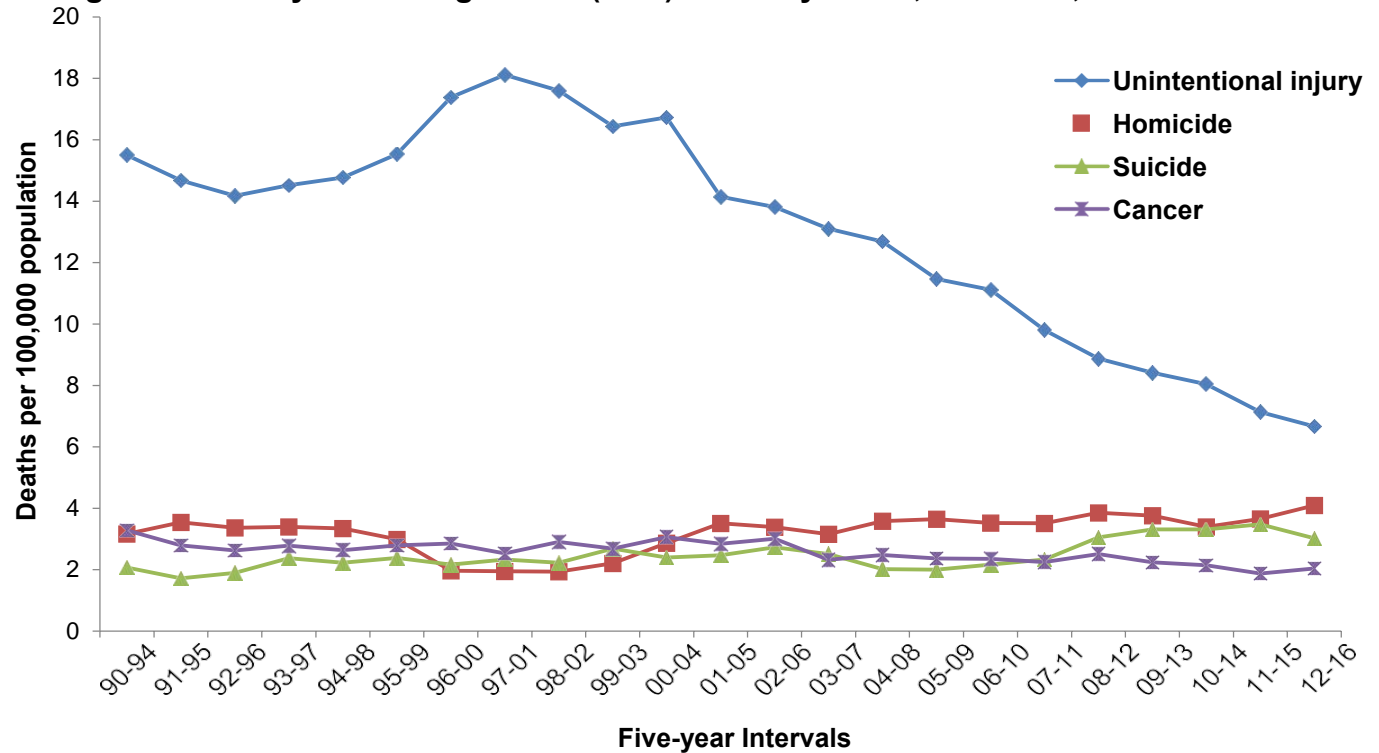


Source: Delaware Department of Health and Social Services, Division of Public Health, Delaware Health Statistics Center

CHILD MORTALITY

From 2002-2006 to 2012-2016, rates for two of the four leading causes of mortality in children ages 1-19 declined. Unintentional injury mortality rates declined 51 percent; cancer mortality rates fell 33 percent; and homicide mortality rates increased by 21 percent. Suicide mortality rates increased 11 percent to 3.0 deaths per 100,000 children.

Figure 43. Five-year Average Child (1-19) Mortality Rates, Delaware, 1990-2016



Source: Delaware Department of Health and Social Services, Division of Public Health, Delaware Health Statistics Center

The most common causes of child deaths in 2012-2016 are:

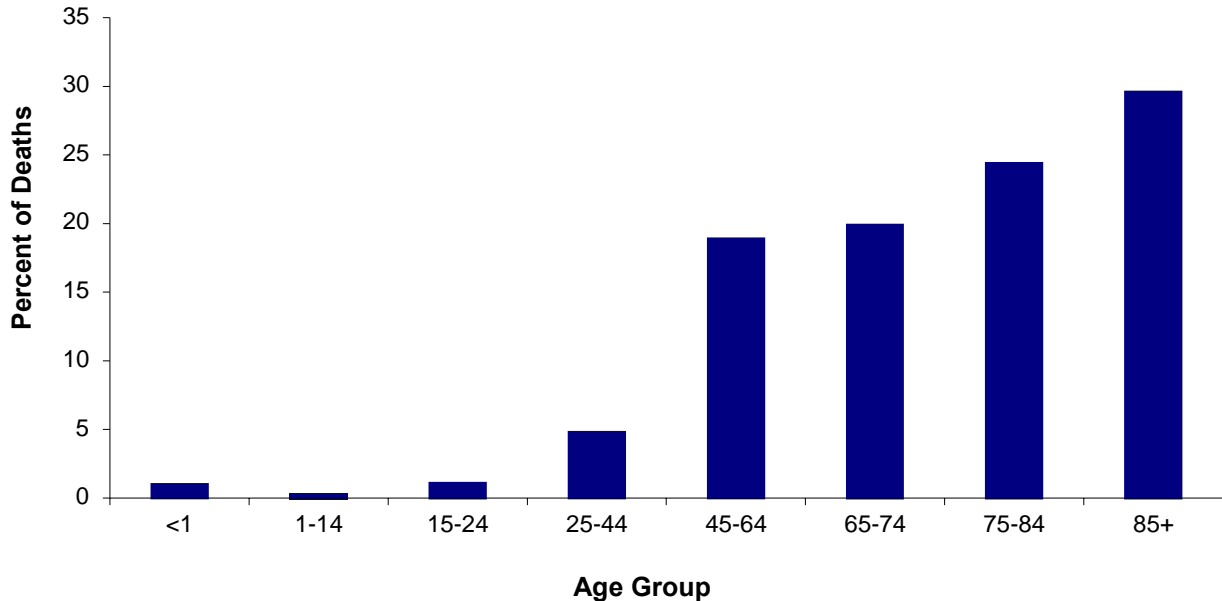
- Motor vehicle crashes accounted for 55 percent of all deaths due to unintentional injuries. The second and third most common causes of unintentional injury deaths of children were poisoning and drowning, which accounted for 19 and 11 percent of deaths, respectively.
- Most child homicides were due to firearms (74 percent) and suffocation (4.3 percent).
- The majority of child cancer deaths were due to brain cancer (48 percent) and leukemia (13 percent).
- Suffocation, followed by firearms, were the most common methods of suicide, and accounted for 53 and 27 percent of the total suicide deaths.

MORTALITY

More Delaware residents died in 2016 than in 2015. A total of 8,872 residents died, 87 of whom were infants under the age of 1. Deaths were split almost equally between males and females. Cancer and heart disease were the most common causes of death, accounting for 46 percent of all deaths in 2016.

- Thirty percent of the Delawareans who died in 2016 were 85 or older. Deaths of those 75 and older accounted for more than half of all deaths.

Figure 44. Percent of Deaths by Age, Delaware, 2016



Source: Delaware Department of Health and Social Services, Division of Public Health, Delaware Health Statistics Center

- A Delaware resident born in 2016 could expect to live an average of 78.8 years.
- Life expectancy at birth varied by race and sex; white females had the highest life expectancy (82.1) while black males had the lowest (72.1).
- In 1989, 80 percent of Delaware decedents were buried and 15 percent were cremated. By 2016, the distribution had shifted: 45 percent of decedents were buried and 50 percent were cremated.
- In 2016, cancer was the leading cause of death in Delaware. Heart disease, stroke, and accidents are in the top five, while diabetes is the ninth leading cause of death.

Figure 45. Number of Deaths by Leading Cause, Delaware, 2016

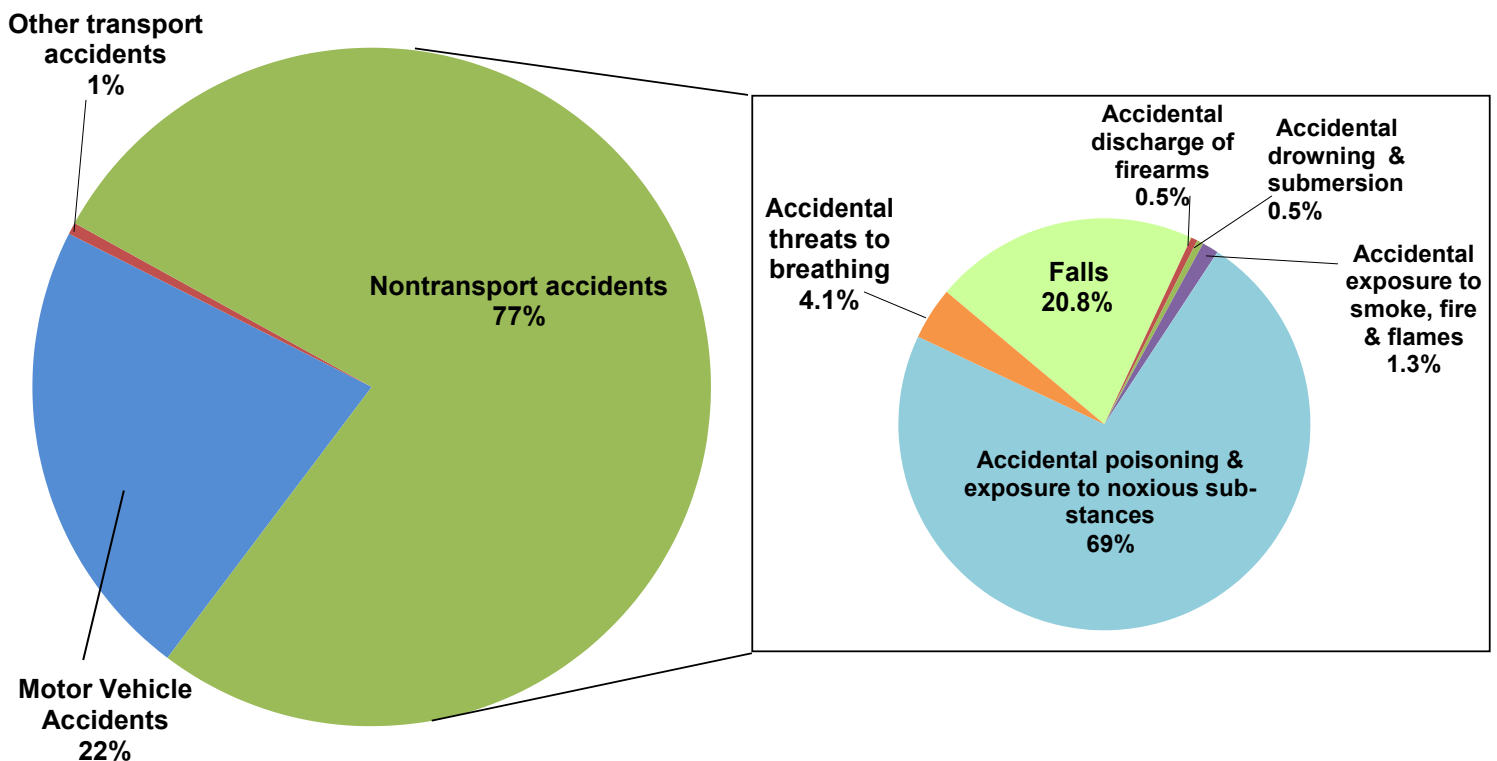
Rank	Leading Cause of Death	Number
1	Malignant neoplasms	2,125
2	Diseases of heart	1,955
3	Chronic lower respiratory diseases	540
4	Accidents (unintentional injuries)	534
5	Cerebrovascular diseases	503
6	Dementia	443
7	Alzheimer's disease	329
8	Nephritis, nephrotic syndrome & nephrosis	208
9	Diabetes mellitus	203
10	Septicemia	143

Source: Delaware Department of Health and Social Services, Division of Public Health, Delaware Health Statistics Center

MORTALITY

- Of the 534 deaths due to unintentional injury in 2016 (6 percent of all deaths), 22 percent were due to motor vehicle accidents and 77 percent were due to non-transport accidents. More than two thirds (69 percent) of the 411 non-transport accidents were caused by unintentional poisonings; the majority (97 percent) of unintentional poisonings were drug-induced poisonings.
- For the eighth year, unintentional poisonings surpassed motor vehicle injuries and became the leading cause of unintentional injury death in 2016.
 - Poisonings caused the most unintentional injuries for black and white males and females. The second highest unintentional injuries were motor vehicle traffic accidents for both black and white males and black females. Falls were the second highest unintentional injuries for white females.
- In 2012-2016, accidents were the number one cause of deaths for people 1-44 years of age, and they were responsible for 42 percent of all deaths of people 15-24 years of age. For decedents ages 15-24, accidents, homicides, and suicides were the three most frequent causes of death and accounted for more than three-quarters of total deaths.

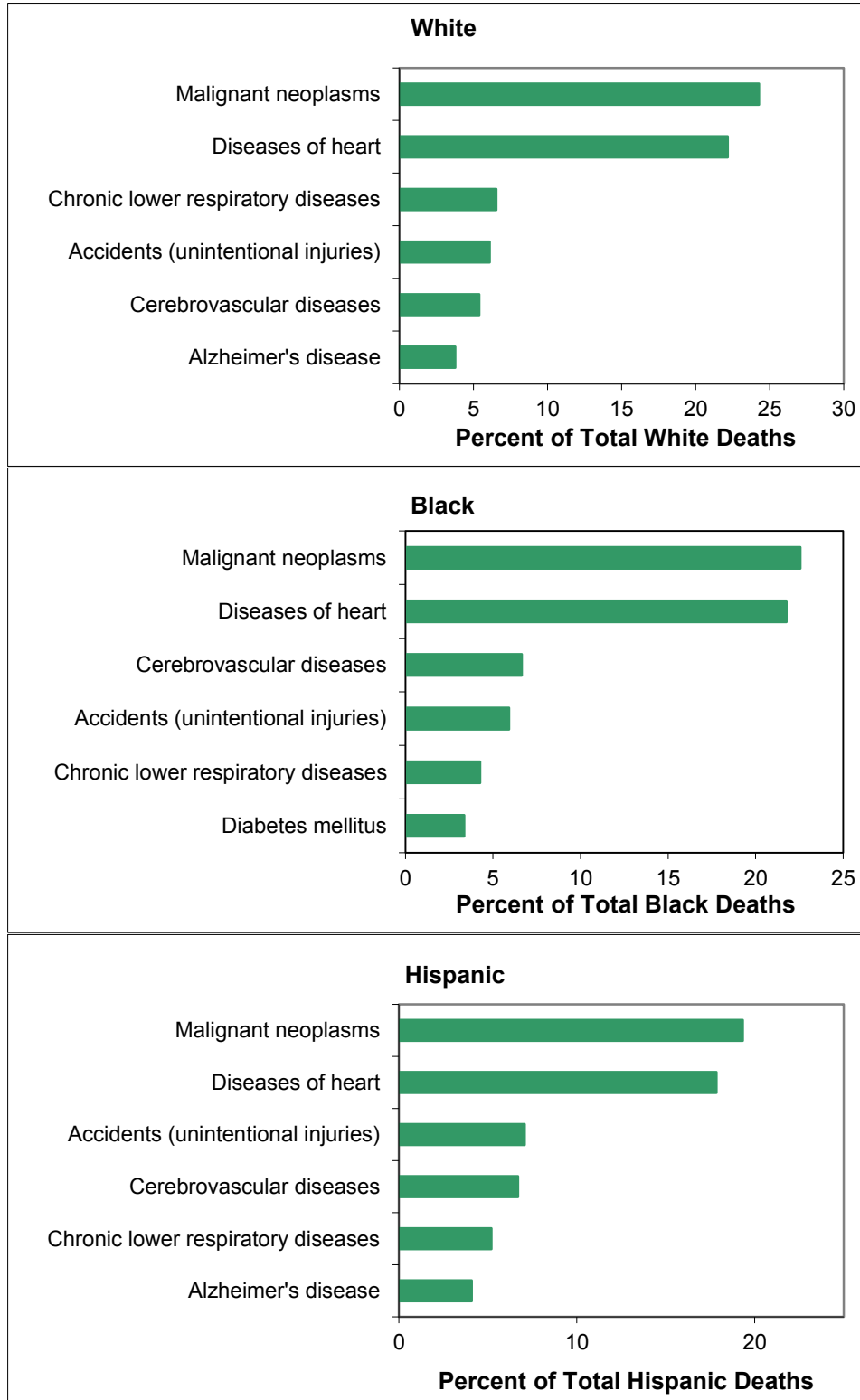
Figure 46. Accidental Causes of Death by Specific Cause of Injury, Delaware, 2016



*Note: Classification of causes of death are specified in the Technical Notes and Appendices section of the report.
Source: Delaware Department of Health and Social Services, Division of Public Health, Delaware Health Statistics Center*

The leading causes of death varied by race and ethnic group. In 2016, the most common causes of death for white, black, and Hispanic Delawareans were:

Figure 47. Leading Causes of Death by Race and Ethnicity, Delaware, 2016



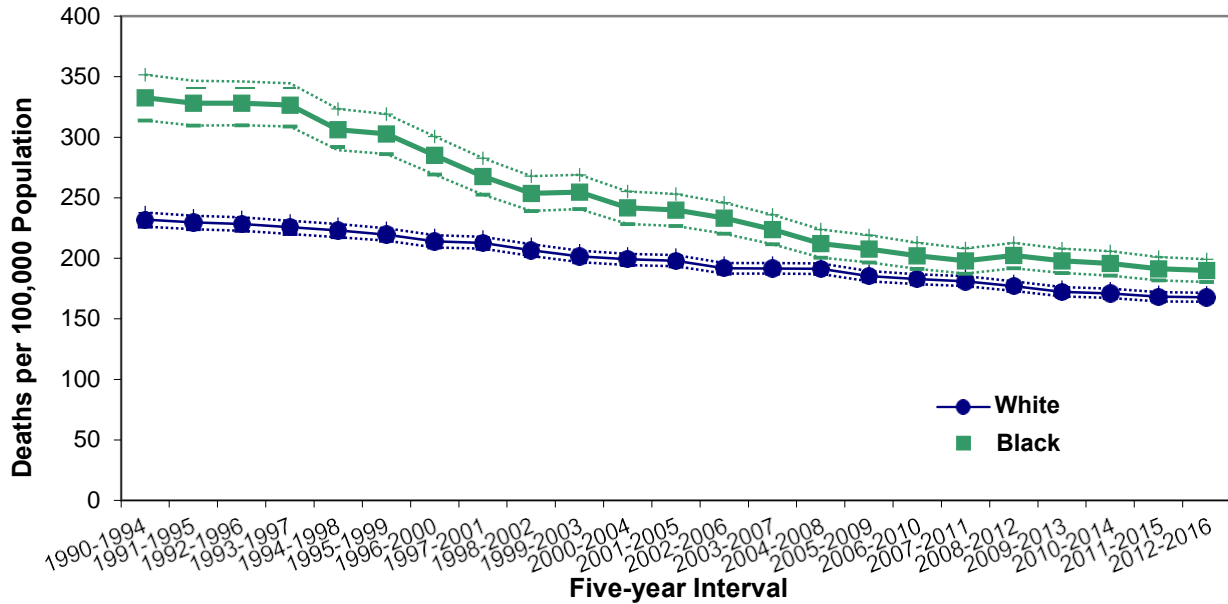
Source: Delaware Department of Health and Social Services, Division of Public Health, Delaware Health Statistics Center

MORTALITY

Cancer mortality rates have decreased in all three counties since the early 1990s. In 2012-2016, the five-year age-adjusted cancer mortality rates were 160.1 in Sussex County, 165.6 in New Castle County, and in Kent County 197.0 deaths per 100,000 population. The cancer mortality rate in Wilmington exceeded all counties at 209.5 deaths per 100,000 population.

Cancer mortality rates for black and white decedents followed the same declining trend, and though the gap between black and white cancer mortality rates has narrowed, black cancer mortality rates in 2012-2016 remained higher than white rates (189.9 and 167.8 deaths per 100,000 population).

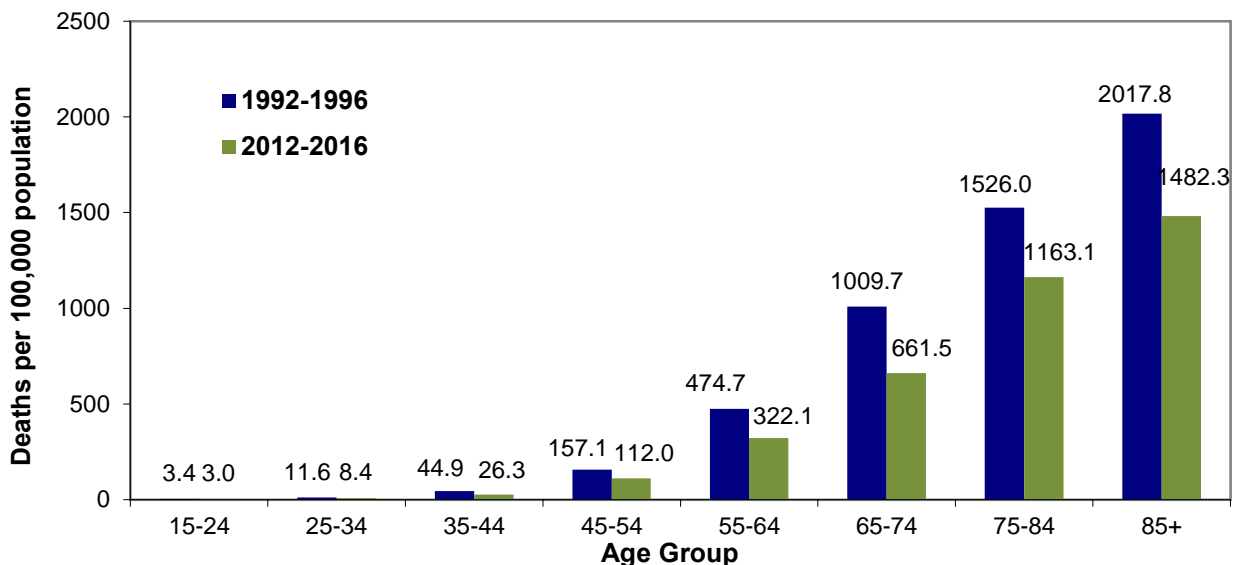
Figure 48. Five-year Age-Adjusted Cancer Mortality Rates by Race, Delaware, 1990-2016



Source: Delaware Department of Health and Social Services, Division of Public Health, Health Statistics Center

The same decreases seen in the age-adjusted cancer mortality rates were reflected in the age-specific rates as well. Cancer mortality rates declined for all age groups between 1992-1996 and 2012-2016. The 65-74 and 55-64 age groups experienced the largest decreases.

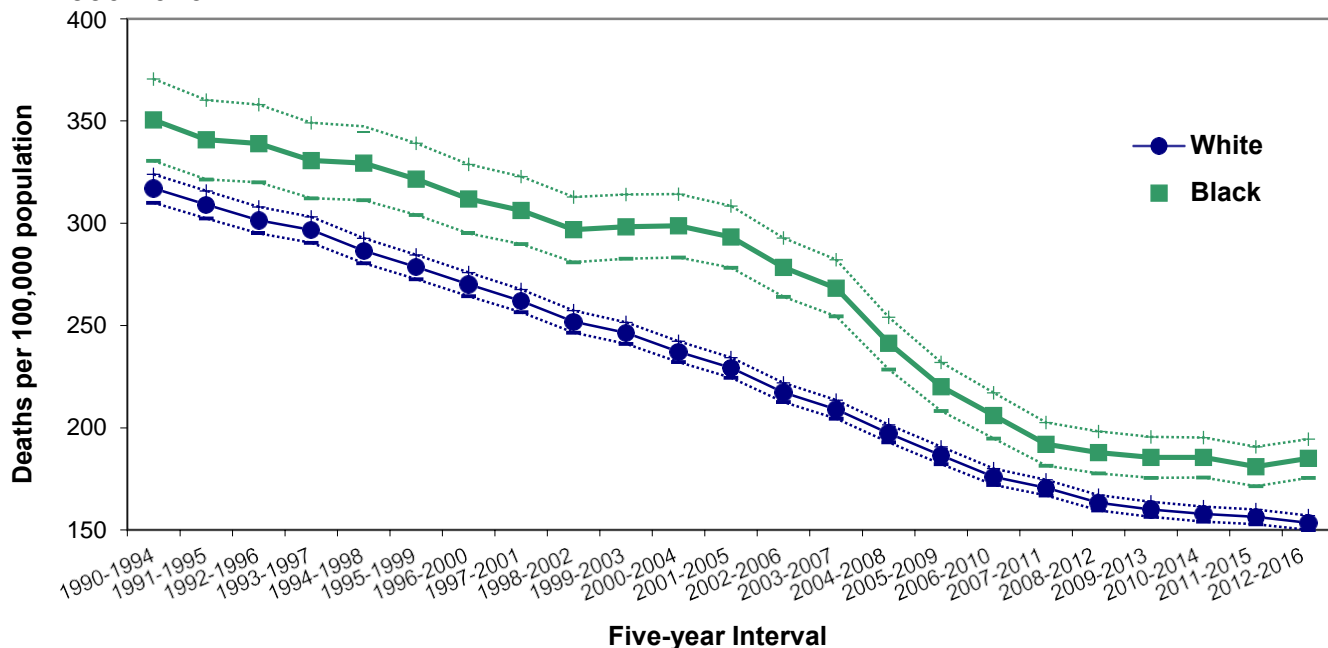
Figure 49. Five-year Average Age-Specific Cancer Mortality Rates, Delaware, 1992-1996 and 2012-2016



Source: Delaware Department of Health and Social Services, Division of Public Health, Delaware Health Statistics Center

Heart disease was the second most common cause of death for both black and white Delawareans in 2012-2016. Both black and white heart disease mortality rates have declined significantly since 1990-1994, with white rates declining 51.6 percent and black rates declining 47.2 percent.

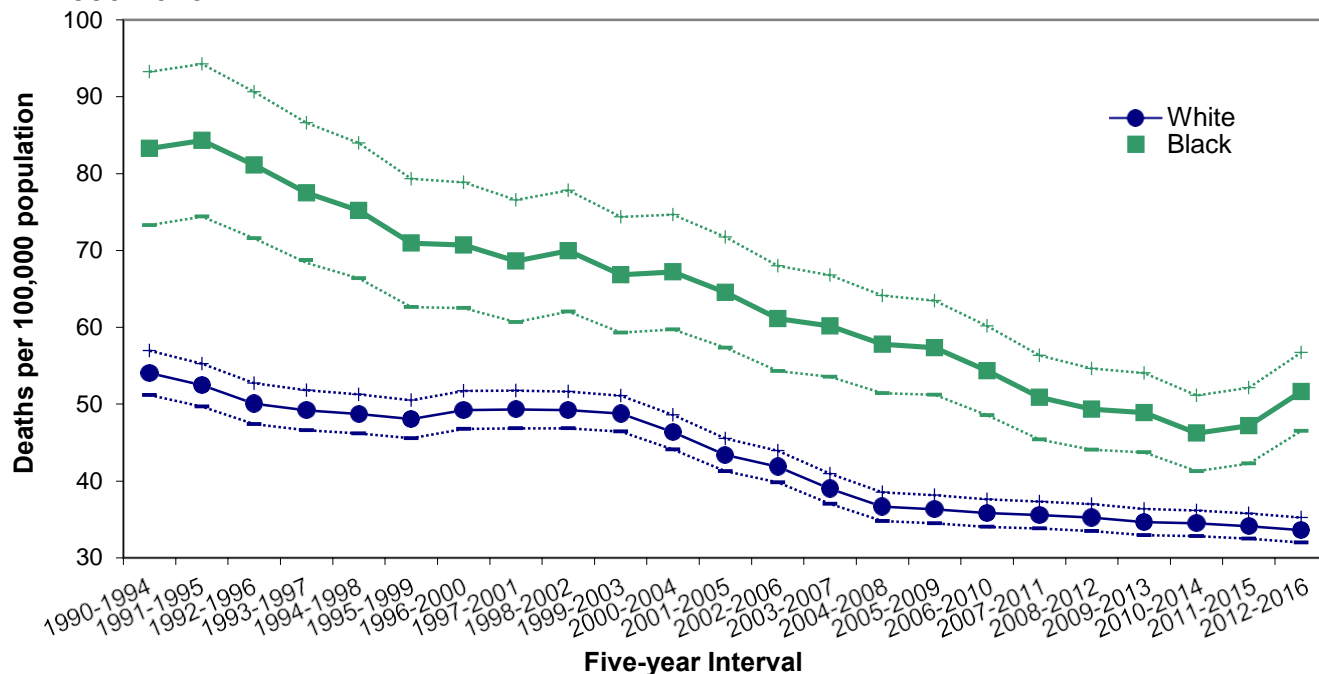
Figure 50. Five-year Age-Adjusted Heart Disease Mortality Rates by Race, Delaware, 1990-2016



Source: Delaware Department of Health and Social Services, Division of Public Health, Delaware Health Statistics Center

Stroke mortality rates for both races continued their declining trends between 1990-1994 and 2012-2016, with white rates decreasing 38 and black rates declining 38 percent. In 2012-2016, the black stroke mortality rate of 51.6 deaths per 100,000 population remained approximately 35 percent higher than the white rate of 33.6 deaths per 100,000 population.

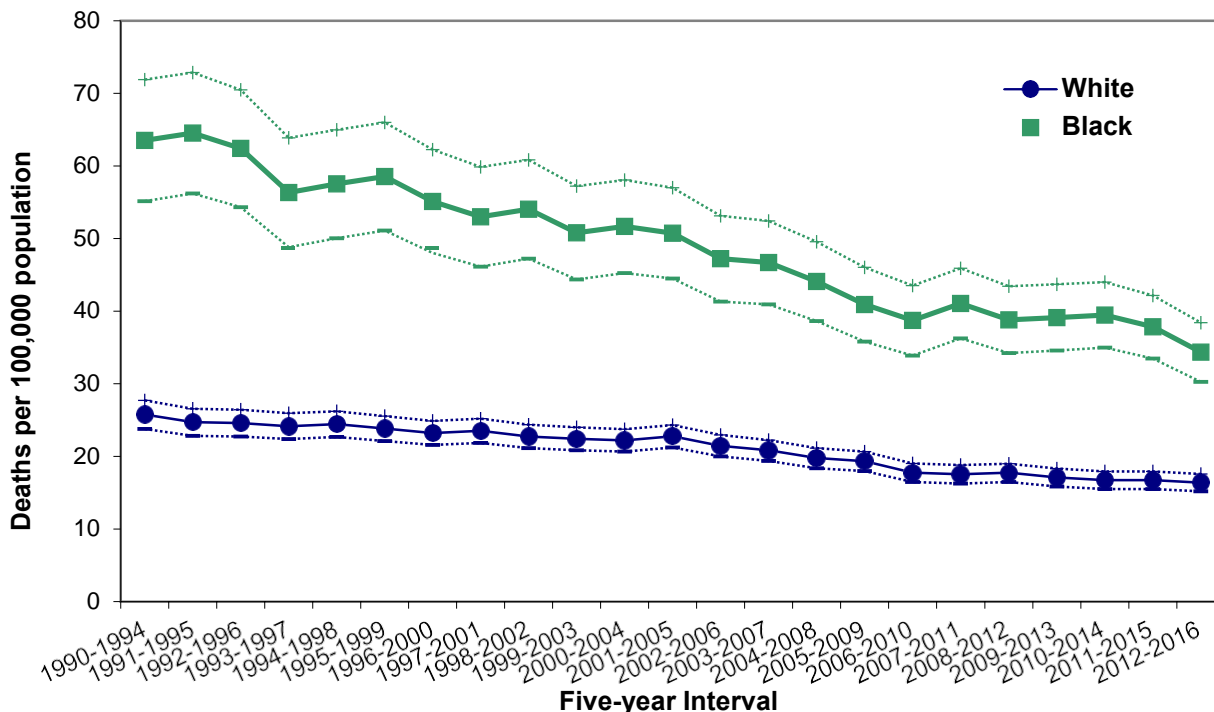
Figure 51. Five-year Age-Adjusted Stroke Mortality Rates by Race, Delaware, 1990-2016



Source: Delaware Department of Health and Social Services, Division of Public Health, Delaware Health Statistics Center

Though black mortality rates for diabetes have declined 46 percent since 1990-1994, their rates were double that of whites in 2012-2016.

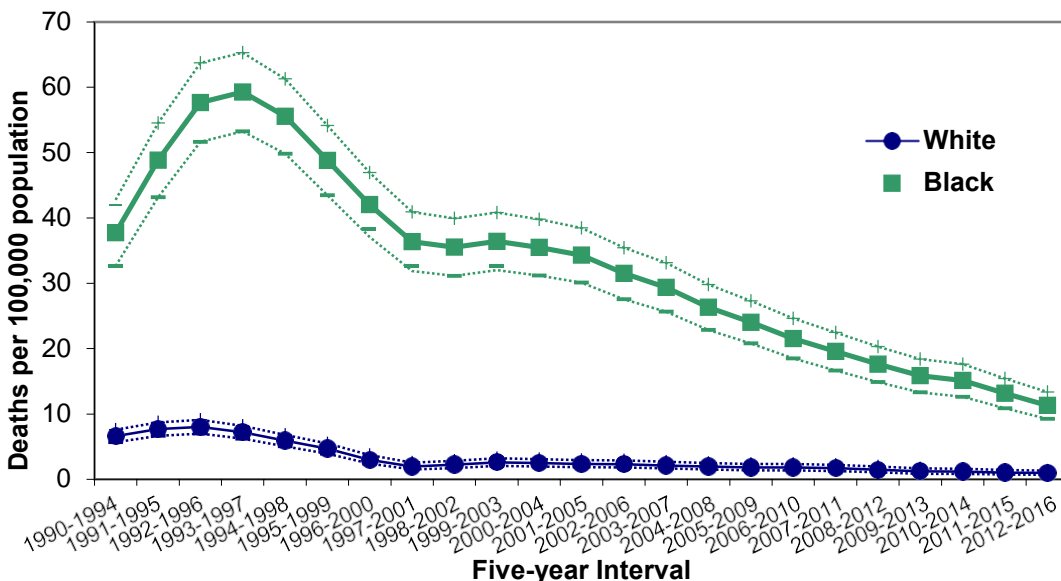
Figure 52. Five-year Age-Adjusted Diabetes Mortality Rates by Race, Delaware, 1990-2016



Source: Delaware Department of Health and Social Services, Division of Public Health, Delaware Health Statistics Center

HIV/AIDS mortality has disproportionately affected Delaware’s black population. Despite black HIV/AIDS mortality rates decreasing significantly since the 1993-1997 peak, their 2012-2016 mortality rate of 11.3 deaths per 100,000 population was more than 11 times that of whites. Though they made up only 22 percent of the total Delaware population in 2012-2016, black decedents accounted for 76 percent of all deaths due to HIV/AIDS.

Figure 53. Five-year Age-Adjusted HIV/AIDS Mortality Rates by Race, Delaware, 1990-2016

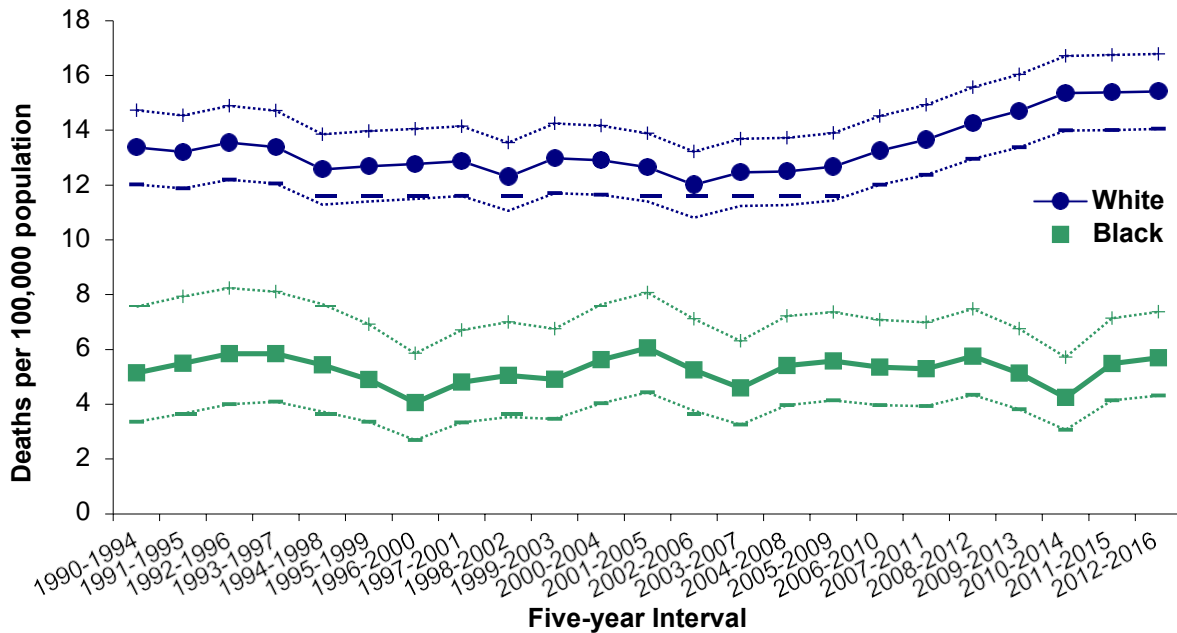


In 2012-2016, HIV was the twelfth leading cause of death for male Delawareans; it ranked ninth for black males and twelfth for black females.

Source: Delaware Department of Health and Social Services, Division of Public Health, Delaware Health Statistics Center

Suicide mortality trends for white populations increased 15 percent between 1990-1994 and 2012-2016, with the white rate (15.4 deaths per 100,000 population) nearly triple the black rate (5.7 deaths per 100,000 population).

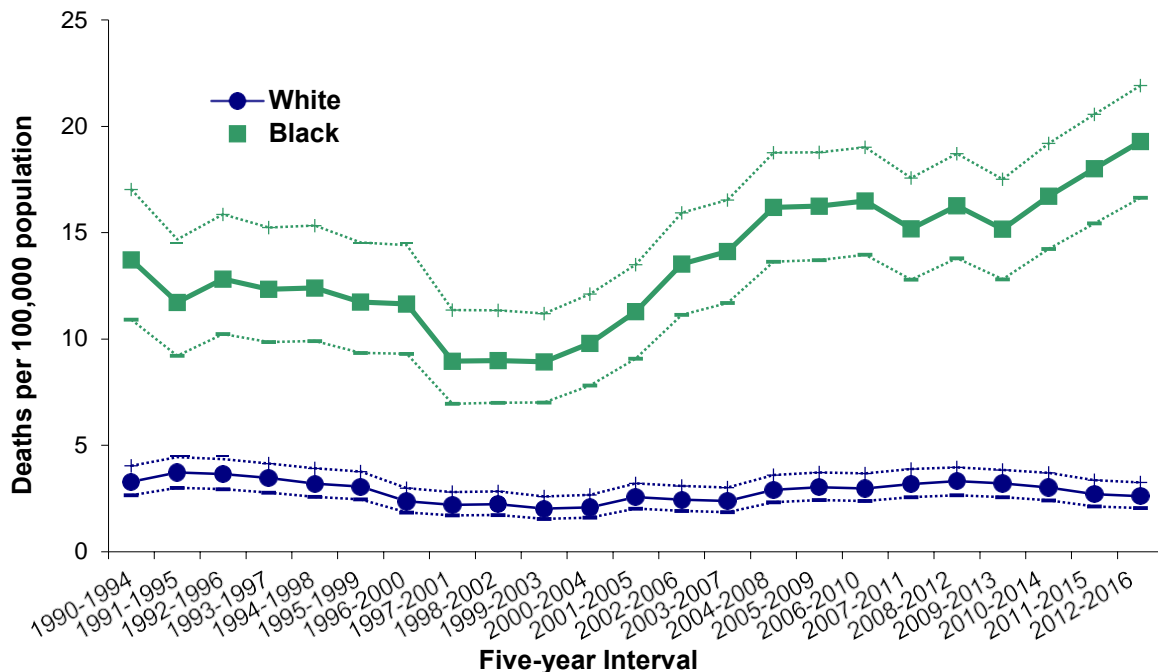
Figure 54. Five-year Age-Adjusted Suicide Mortality Rates by Race, Delaware, 1990-2016



Source: Delaware Department of Health and Social Services, Division of Public Health, Delaware Health Statistics Center

After declining throughout most of the 1990s and reaching their lowest point in 1999-2003, homicide mortality rates have risen 97 percent to 6.9 deaths per 100,000 population in 2012-2016. During the same time period, the black homicide rate increased 116 percent to 19.3 and the white homicide mortality rate increased 30 percent to 2.6 deaths per 100,000 population.

Figure 55. Five-year Age-Adjusted Homicide Mortality Rates by Race, Delaware, 1990-2016

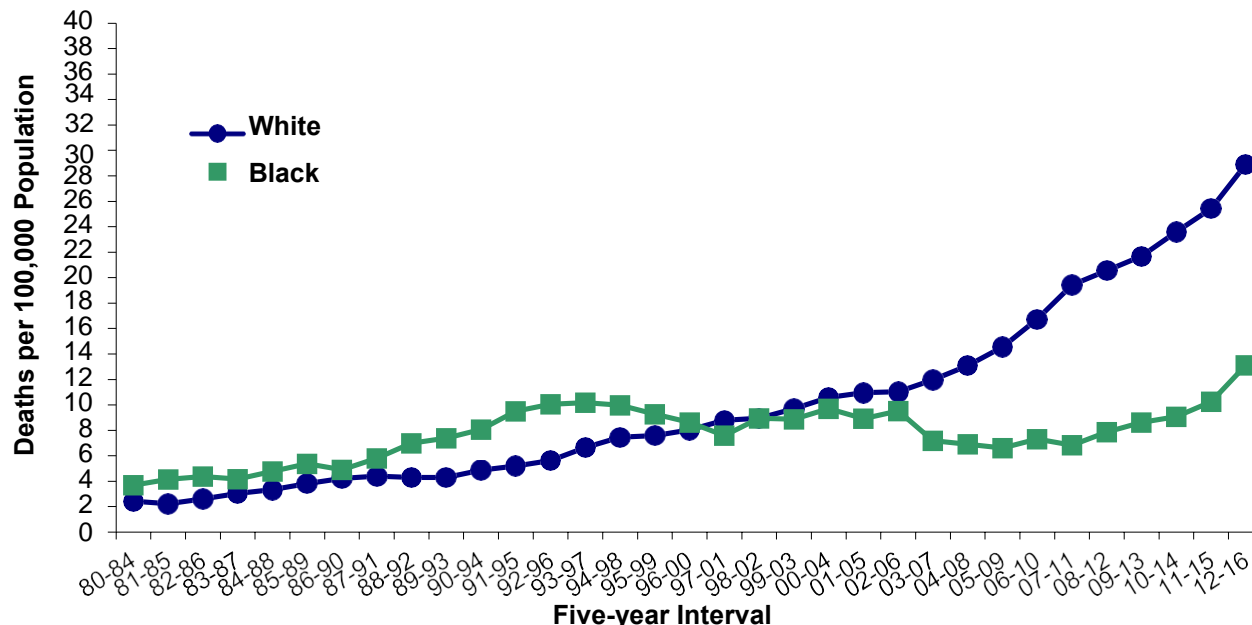


Source: Delaware Department of Health and Social Services, Division of Public Health, Delaware Health Statistics Center

MORTALITY

Though black mortality rates for drug-induced deaths were historically higher than white rates, in 1994-1998 they began a four-year decline that moved them just below white rates by 1997-2001. Since then, white mortality rates have remained higher and continued to rise. By 2012-2016, the white drug-induced mortality rate (28.9 deaths per 100,000 population) was more than twice the black rate (13.1).

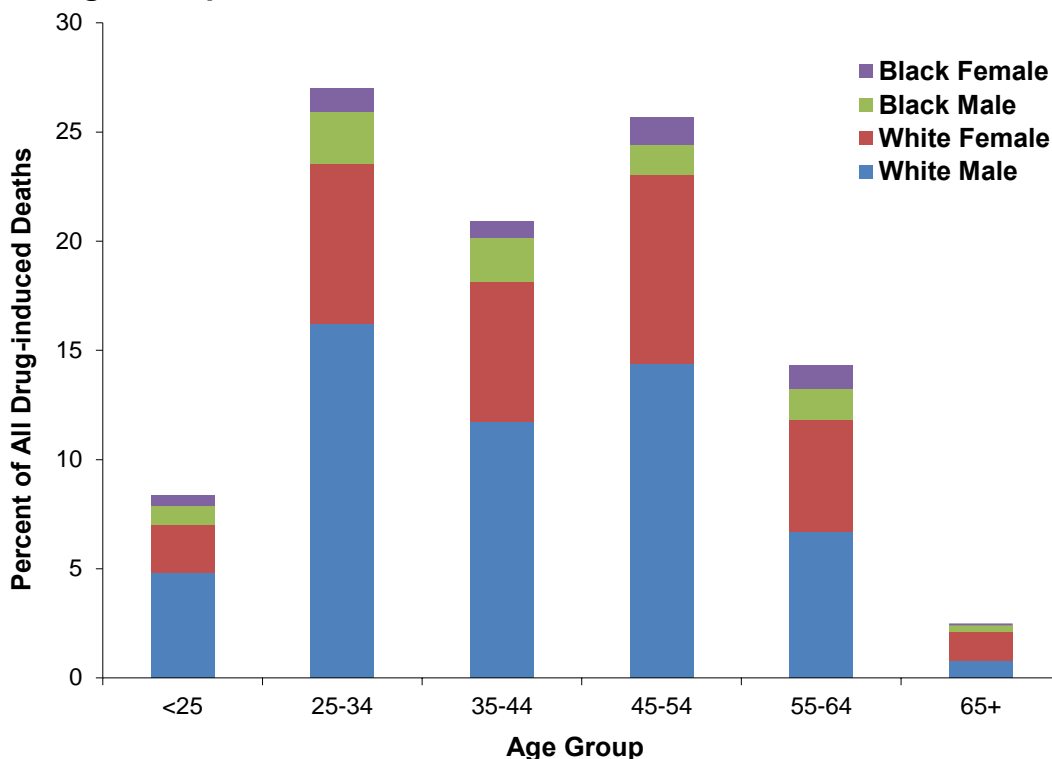
Figure 56. Five-year Age-adjusted Mortality Rates for Drug-induced Deaths by Race, Delaware, 1980-2016



Source: Delaware Department of Health and Social Services, Division of Public Health, Delaware Health Statistics Center

The white population has a significantly higher percentage of drug-induced deaths than the black population. In 2012-2016, 55 percent of all drug-induced deaths were white males. Of those deaths, 56 percent were white males ages 25-34 and 45-54. White females ages 45-54 accounted for 9 percent of drug-induced deaths. In contrast, black males ages 25-34 and 45-54, and black females ages 45-54 were only 5 percent of the drug-induced deaths.

Figure 57. Distribution of Drug-induced Deaths by Race, Sex, And Age Group, Delaware, 2012-2016



Source: Delaware Department of Health and Social Services, Division of Public Health, Delaware Health Statistics Center

TABLE F-1. NUMBER OF DEATHS BY RACE, COUNTIES, AND CITY OF WILMINGTON, U.S., DELAWARE, 2003-2016

Area/ Race	2003	2004	2005	2006	2007	2008	2009	2010	2011	2012	2013	2014	2015	2016
U.S.														
All Races	2,448,288	2,397,615	2,448,017	2,426,264	2,423,712	2,471,984	2,437,163	2,468,435	2,515,458	2,543,279	2,596,993	2,626,418	2,712,630	-
White	2,103,714	2,056,643	2,098,097	2,077,549	2,074,151	2,120,233	2,086,355	2,114,749	2,156,077	2,175,178	2,217,103	2,237,880	2,306,861	-
Black	291,300	287,315	292,808	289,971	289,585	289,072	286,623	286,959	290,100	295,222	302,969	308,960	320,072	-
Other	53,274	53,657	57,112	58,744	59,976	62,679	64,185	66,727	69,281	72,879	76,921	79,578	85,697	-
Delaware														
All Races	7,067	7,124	7,424	7,144	7,246	7,602	7,498	7,667	7,816	7,873	7,967	8,252	8,580	8,872
White	5,782	5,862	6,129	5,856	5,985	6,309	6,113	6,274	6,412	6,348	6,498	6,677	6,883	7,173
Black	1,241	1,204	1,235	1,225	1,181	1,217	1,270	1,258	1,256	1,392	1,295	1,435	1,443	1,521
Other	44	58	60	63	80	76	115	135	148	133	174	140	254	178
Kent														
All Races	1,114	1,154	1,250	1,219	1,255	1,367	1,379	1,345	1,368	1,462	1,422	1,524	1,592	1,626
White	878	948	1,017	967	1,018	1,133	1,096	1,080	1,092	1,159	1,128	1,196	1,232	1,261
Black	224	193	224	234	219	220	263	231	239	273	250	299	304	325
Other	12	13	9	18	18	14	20	34	37	30	44	29	56	40
New Castle														
All Races	4,129	4,146	4,229	4,039	4,101	4,290	4,100	4,221	4,394	4,260	4,338	4,334	4,547	4,666
White	3,299	3,324	3,381	3,212	3,294	3,441	3,234	3,316	3,486	3,270	3,392	3,354	3,476	3,579
Black	809	793	809	794	771	802	799	828	820	909	847	901	909	975
Other	21	29	39	33	36	47	67	77	88	81	99	79	162	112
Wilmington														
All Races	843	782	765	728	705	726	692	713	697	691	651	729	666	716
White	413	358	362	337	345	334	329	294	320	297	273	326	277	293
Black	430	419	401	385	359	389	360	406	362	383	364	395	359	407
Other	-	5	2	6	1	3	3	13	15	11	14	8	30	16
Balance of NC County														
All Races	3,286	3,364	3,464	3,311	3,396	3,564	3,408	3,508	3,697	3,569	3,687	3,605	3,881	3,950
White	2,886	2,966	3,019	2,875	2,949	3,107	2,905	3,022	3,166	2,973	3,119	3,028	3,199	3,286
Black	379	374	408	409	412	413	439	422	458	526	483	506	550	568
Other	21	24	37	27	35	44	64	64	73	70	85	71	132	96
Sussex														
All Races	1,824	1,824	1,945	1,886	1,890	1,945	2,019	2,101	2,054	2,151	2,207	2,394	2,441	2,580
White	1,605	1,590	1,731	1,677	1,673	1,735	1,783	1,878	1,834	1,919	1,978	2,127	2,175	2,333
Black	208	218	202	197	191	195	208	199	197	210	198	235	230	221
Other	11	16	12	12	26	15	28	24	23	22	31	32	36	26

Note:
2016 US data are unavailable from NCHS.

Sources: Delaware Department of Health and Social Services, Division of Public Health, Delaware Health Statistics Center
National Center for Health Statistics

TABLE F-2. NUMBER OF DEATHS BY AGE, RACE, AND HISPANIC ORIGIN, COUNTIES AND CITY OF WILMINGTON, DELAWARE, 2016

Area/ Age	All Races	White	Black	American Indian ¹	Asian or Pacific Islander (API)				All Other	Hispanic Origin ²
					Chinese	Japanese	Filipino	Other API		
Delaware	8,872	7,173	1,521	19	10	2	10	56	81	269
<1	87	36	40	0	0	0	0	3	8	17
1-4	7	3	4	0	0	0	0	0	0	0
5-14	17	8	8	0	0	0	0	0	1	3
15-24	95	58	33	0	0	0	0	0	4	8
25-34	203	144	53	0	0	0	0	0	6	19
35-44	227	155	68	1	0	0	0	2	1	11
45-54	537	379	148	1	0	0	0	3	6	21
55-64	1,144	875	246	3	3	0	1	7	9	28
65-74	1,763	1,396	325	6	2	0	1	12	21	62
75+	4,792	4,119	596	8	5	2	8	29	25	100
Unknown	0	0	0	0	0	0	0	0	0	0
Kent	1,626	1,261	325	8	2	1	4	8	17	64
<1	14	4	9	0	0	0	0	1	0	3
1-4	2	1	1	0	0	0	0	0	0	0
5-14	4	2	2	0	0	0	0	0	0	0
15-24	19	12	5	0	0	0	0	0	2	2
25-34	32	21	11	0	0	0	0	0	0	3
35-44	52	31	21	0	0	0	0	0	0	4
45-54	107	83	23	0	0	0	0	0	1	5
55-64	222	167	47	2	1	0	0	1	4	9
65-74	366	274	81	2	1	0	1	3	4	13
75+	808	666	125	4	0	1	3	3	6	25
Unknown	0	0	0	0	0	0	0	0	0	0
New Castle	4,666	3,579	975	3	7	0	5	41	56	161
<1	62	25	27	0	0	0	0	2	8	12
1-4	2	0	2	0	0	0	0	0	0	0
5-14	9	5	4	0	0	0	0	0	0	2
15-24	56	34	21	0	0	0	0	0	1	5
25-34	117	71	40	0	0	0	0	0	6	8
35-44	110	74	33	1	0	0	0	1	1	7
45-54	319	202	108	1	0	0	0	3	5	14
55-64	634	453	168	0	2	0	1	5	5	15
65-74	826	605	200	0	1	0	0	8	12	40
75+	2,531	2,110	372	1	4	0	4	22	18	58
Unknown	0	0	0	0	0	0	0	0	0	0
Wilmington	716	293	407	0	0	0	0	3	13	36
<1	18	1	14	0	0	0	0	0	3	2
1-4	1	0	1	0	0	0	0	0	0	0
5-14	1	0	1	0	0	0	0	0	0	0
15-24	11	3	8	0	0	0	0	0	0	1
25-34	30	3	25	0	0	0	0	0	2	2
35-44	21	8	13	0	0	0	0	0	0	2
45-54	69	21	47	0	0	0	0	0	1	4
55-64	108	31	76	0	0	0	0	0	1	2
65-74	130	60	67	0	0	0	0	1	2	11
75+	327	166	155	0	0	0	0	2	4	12
Unknown	0	0	0	0	0	0	0	0	0	0
Balance of NC County	3,950	3,286	568	3	7	0	5	38	43	125
<1	44	24	13	0	0	0	0	2	5	10
1-4	1	0	1	0	0	0	0	0	0	0
5-14	8	5	3	0	0	0	0	0	0	2
15-24	45	31	13	0	0	0	0	0	1	4
25-34	87	68	15	0	0	0	0	0	4	6
35-44	89	66	20	1	0	0	0	1	1	5
45-54	250	181	61	1	0	0	0	3	4	10
55-64	526	422	92	0	2	0	1	5	4	13
65-74	696	545	133	0	1	0	0	7	10	29
75+	2,204	1,944	217	1	4	0	4	20	14	46
Unknown	0	0	0	0	0	0	0	0	0	0
Sussex	2,580	2,333	221	8	1	1	1	7	8	44
<1	11	7	4	0	0	0	0	0	0	2
1-4	3	2	1	0	0	0	0	0	0	0
5-14	4	1	2	0	0	0	0	0	1	1
15-24	20	12	7	0	0	0	0	0	1	1
25-34	54	52	2	0	0	0	0	0	0	8
35-44	65	50	14	0	0	0	0	1	0	0
45-54	111	94	17	0	0	0	0	0	0	2
55-64	288	255	31	1	0	0	0	1	0	4
65-74	571	517	44	4	0	0	0	1	5	9
75+	1,453	1,343	99	3	1	1	1	4	1	17
Unknown	0	0	0	0	0	0	0	0	0	0

Notes:

1. Includes any deaths that may have occurred to Aleut and Eskimo Indians.
2. People of Hispanic origin may be of any race. See *Hispanic Origin and Race* in the Technical Notes.

Source: Delaware Department of Health and Social Services, Division of Public Health, Delaware Health Statistics Center

TABLE F-3. NUMBER OF DEATHS BY AGE AND RACE, COUNTIES AND CITY OF WILMINGTON, DELAWARE, 2016

BOTH SEXES

Area/ Race	Age of Decedent													
	Total	< 1	1-4	5-9	10-14	15-19	20-24	25-34	35-44	45-54	55-64	65-74	75+	Unk
Delaware														
All Races	8,872	87	7	8	9	31	64	203	227	537	1,144	1,763	4,792	0
White	7,173	36	3	4	4	16	42	144	155	379	875	1,396	4,119	0
Black	1,521	40	4	3	5	13	20	53	68	148	246	325	596	0
Other	178	11	0	1	0	2	2	6	4	10	23	42	77	0
Kent														
All Races	1,626	14	2	1	3	5	14	32	52	107	222	366	808	0
White	1,261	4	1	1	1	2	10	21	31	83	167	274	666	0
Black	325	9	1	0	2	2	3	11	21	23	47	81	125	0
Other	40	1	0	0	0	1	1	0	0	1	8	11	17	0
New Castle														
All Races	4,666	62	2	3	6	21	35	117	110	319	634	826	2,531	0
White	3,579	25	0	2	3	10	24	71	74	202	453	605	2,110	0
Black	975	27	2	1	3	10	11	40	33	108	168	200	372	0
Other	112	10	0	0	0	1	0	6	3	9	13	21	49	0
Wilmington														
All Races	716	18	1	1	0	4	7	30	21	69	108	130	327	0
White	293	1	0	0	0	1	2	3	8	21	31	60	166	0
Black	407	14	1	1	0	3	5	25	13	47	76	67	155	0
Other	16	3	0	0	0	0	0	2	0	1	1	3	6	0
Balance of NC County														
All Races	3,950	44	1	2	6	17	28	87	89	250	526	696	2,204	0
White	3,286	24	0	2	3	9	22	68	66	181	422	545	1,944	0
Black	568	13	1	0	3	7	6	15	20	61	92	133	217	0
Other	96	7	0	0	0	1	0	4	3	8	12	18	43	0
Sussex														
All Races	2,580	11	3	4	0	5	15	54	65	111	288	571	1,453	0
White	2,333	7	2	1	0	4	8	52	50	94	255	517	1,343	0
Black	221	4	1	2	0	1	6	2	14	17	31	44	99	0
Other	26	0	0	1	0	0	1	0	1	0	2	10	11	0

Source: Delaware Department of Health and Social Services, Division of Public Health, Delaware Health Statistics Center

TABLE F-4. NUMBER OF DEATHS BY AGE AND RACE , COUNTIES AND CITY OF WILMINGTON, DELAWARE, 2016

MALES

Area/ Race	Age of Decedent													
	Total	< 1	1-4	5-9	10-14	15-19	20-24	25-34	35-44	45-54	55-64	65-74	75+	Unk
Delaware														
All Races	4,597	47	5	5	5	26	48	138	156	333	670	1,020	2,144	0
White	3,695	21	2	4	3	14	33	96	105	234	513	809	1,861	0
Black	813	21	3	1	2	10	13	38	49	92	142	188	254	0
Other	89	5	0	0	0	2	2	4	2	7	15	23	29	0
Kent														
All Races	853	9	2	1	2	5	11	22	34	64	128	203	372	0
White	649	3	1	1	0	2	8	16	17	50	95	152	304	0
Black	185	6	1	0	2	2	2	6	17	14	28	46	61	0
Other	19	0	0	0	0	1	1	0	0	0	5	5	7	0
New Castle														
All Races	2,376	31	1	2	3	17	27	81	73	200	379	481	1081	0
White	1,811	14	0	2	3	9	20	46	49	129	275	352	912	0
Black	507	12	1	0	0	7	7	31	22	64	96	117	150	0
Other	58	5	0	0	0	1	0	4	2	7	8	12	19	0
Wilmington														
All Races	359	10	0	0	0	3	5	22	14	43	55	88	119	0
White	133	1	0	0	0	1	2	1	4	16	16	39	53	0
Black	217	7	0	0	0	2	3	19	10	26	38	46	66	0
Other	9	2	0	0	0	0	0	2	0	1	1	3	0	0
Balance of NC County														
All Races	2,017	21	1	2	3	14	22	59	59	157	324	393	962	0
White	1,678	13	0	2	3	8	18	45	45	113	259	313	859	0
Black	290	5	1	0	0	5	4	12	12	38	58	71	84	0
Other	49	3	0	0	0	1	0	2	2	6	7	9	19	0
Sussex														
All Races	1,368	7	2	2	0	4	10	35	49	69	163	336	691	0
White	1,235	4	1	1	0	3	5	34	39	55	143	305	645	0
Black	121	3	1	1	0	1	4	1	10	14	18	25	43	0
Other	12	0	0	0	0	0	1	0	0	0	2	6	3	0

Source: Delaware Department of Health and Social Services, Division of Public Health, Delaware Health Statistics Center

TABLE F-5. NUMBER OF DEATHS BY AGE AND RACE, COUNTIES AND CITY OF WILMINGTON, DELAWARE, 2016

FEMALES

Area/ Race	Age of Decedent													
	Total	< 1	1-4	5-9	10-14	15-19	20-24	25-34	35-44	45-54	55-64	65-74	75+	Unk
Delaware														
All Races	4,275	40	2	3	4	5	16	65	71	204	474	743	2,648	0
White	3,478	15	1	0	1	2	9	48	50	145	362	587	2,258	0
Black	708	19	1	2	3	3	7	15	19	56	104	137	342	0
Other	89	6	0	1	0	0	0	2	2	3	8	19	48	0
Kent														
All Races	773	5	0	0	1	0	3	10	18	43	94	163	436	0
White	612	1	0	0	1	0	2	5	14	33	72	122	362	0
Black	140	3	0	0	0	0	1	5	4	9	19	35	64	0
Other	21	1	0	0	0	0	0	0	0	1	3	6	10	0
New Castle														
All Races	2,290	31	1	1	3	4	8	36	37	119	255	345	1,450	0
White	1,768	11	0	0	0	1	4	25	25	73	178	253	1,198	0
Black	468	15	1	1	3	3	4	9	11	44	72	83	222	0
Other	54	5	0	0	0	0	0	2	1	2	5	9	30	0
Wilmington														
All Races	357	8	1	1	0	1	2	8	7	26	53	42	208	0
White	160	0	0	0	0	0	0	2	4	5	15	21	113	0
Black	190	7	1	1	0	1	2	6	3	21	38	21	89	0
Other	7	1	0	0	0	0	0	0	0	0	0	0	6	0
Balance of NC County														
All Races	1,933	23	0	0	3	3	6	28	30	93	202	303	1,242	0
White	1,608	11	0	0	0	1	4	23	21	68	163	232	1,085	0
Black	278	8	0	0	3	2	2	3	8	23	34	62	133	0
Other	47	4	0	0	0	0	0	2	1	2	5	9	24	0
Sussex														
All Races	1,212	4	1	2	0	1	5	19	16	42	125	235	762	0
White	1,098	3	1	0	0	1	3	18	11	39	112	212	698	0
Black	100	1	0	1	0	0	2	1	4	3	13	19	56	0
Other	14	0	0	1	0	0	0	0	1	0	0	4	8	0

Source: Delaware Department of Health and Social Services, Division of Public Health, Delaware Health Statistics Center

TABLE F-6. MORTALITY TRENDS BY RACE, ETHNICITY, GENDER, AND AGE, DELAWARE, 2006-2016

CHARACTERISTIC	Year										
	2006	2007	2008	2009	2010	2011	2012	2013	2014	2015	2016
Resident Deaths											
Number	7,144	7,246	7,602	7,498	7,667	7,816	7,873	7,967	8,252	8,580	8,872
Crude Rate	831.4	831.2	860.1	840.8	852.1	861.7	860.8	862.5	884.3	909.8	931.0
AADR ²	762.7	748.3	760.5	730.8	727.8	726.4	709.7	696.6	703.3	713.5	717.8
Decedent's Race/Ethnicity											
White											
Number	5,856	5,985	6,309	6,113	6,274	6,412	6,348	6,498	6,677	6,883	7,173
Percent	82.0%	82.6%	83.0%	81.5%	81.8%	82.0%	80.6%	81.6%	80.9%	80.2%	80.8%
AADR ²	741.0	734.8	753.4	713.6	718.2	721.8	695.3	692.4	693.7	700.4	713.1
Black											
Number	1,225	1,181	1,217	1,270	1,258	1,256	1,392	1,295	1,435	1,443	1,521
Percent	17.1%	16.3%	16.0%	16.9%	16.4%	16.1%	17.7%	16.3%	17.4%	16.8%	17.1%
AADR ²	943.9	889.2	860.7	866.5	834.4	795.7	858.5	769.4	843.9	814.0	838.0
Hispanic ¹											
Number	126	178	189	164	142	144	148	200	234	217	269
Percent	1.8%	2.5%	2.5%	2.2%	1.9%	1.8%	1.9%	2.5%	2.8%	2.5%	3.0%
AADR ²	485.8	775.5	789.6	691.0	550.0	536.1	504.9	706.3	824.4	690.6	869.8
Decedent's Gender											
Female											
Number	3,590	3,614	3,850	3,782	3,802	3,946	4,015	3,936	4,062	4,209	4,275
Percent	50.3%	49.9%	50.6%	50.4%	49.6%	50.5%	51.0%	49.4%	49.2%	49.1%	48.2%
AADR ²	647.3	630.3	651.9	624.0	610.8	625.0	613.9	588.0	591.9	600.7	591.3
Male											
Number	3,554	3,632	3,752	3,716	3,865	3,870	3,858	4,031	4,190	4,371	4,597
Percent	49.7%	50.1%	49.4%	49.6%	50.4%	49.5%	49.0%	50.6%	50.8%	50.9%	51.8%
AADR ²	905.9	893.5	894.3	860.2	869.9	849.7	826.0	830.3	842.0	850.1	869.8
Decedent's age											
<1											
Number	99	91	101	91	88	98	84	68	74	100	87
Percent	1.4%	1.3%	1.3%	1.2%	1.1%	1.3%	1.1%	0.9%	0.9%	1.2%	1.0%
1-14											
Number	20	15	23	27	18	28	30	29	22	22	24
Percent	0.3%	0.2%	0.3%	0.4%	0.2%	0.4%	0.4%	0.4%	0.3%	0.3%	0.3%
15-24											
Number	92	88	91	92	97	86	89	82	88	90	95
Percent	1.3%	1.2%	1.2%	1.2%	1.3%	1.1%	1.1%	1.0%	1.1%	1.0%	1.1%
25-44											
Number	427	385	400	359	362	356	388	359	375	410	430
Percent	6.0%	5.3%	5.3%	4.8%	4.7%	4.6%	4.9%	4.5%	4.5%	4.8%	4.8%
45-64											
Number	1,410	1,418	1,552	1,529	1,578	1,579	1,620	1,739	1,610	1,662	1,681
Percent	0	0	0	0	0	0	0	0	0	0	0
65-74											
Number	1,232	1,238	1,276	1,313	1,307	1,357	1,325	1,385	1,546	1,605	1,763
Percent	17.2%	17.1%	16.8%	17.5%	17.0%	17.4%	16.8%	17.4%	18.7%	18.7%	19.9%
75-84											
Number	1,960	2,022	2,043	1,944	1,976	2,077	1,897	1,931	2,048	2,097	2,165
Percent	27.4%	27.9%	26.9%	25.9%	25.8%	26.6%	24.1%	24.2%	24.8%	24.4%	24.4%
85+											
Number	1,904	1,985	2,116	2,143	2,241	2,235	2,440	2,374	2,489	2,594	2,627
Percent	26.7%	27.4%	27.8%	28.6%	29.2%	28.6%	31.0%	29.8%	30.2%	30.2%	29.6%

Notes:

1. Because of the small numbers of Hispanic deaths and the resulting variability in annual mortality rates, Hispanic mortality rates should be interpreted with caution.
2. Age-Adjusted Death Rate per 100,000, adjusted to 2000 U.S. Standard Population.
3. Figures for decedent's age may not equal total number of annual deaths due to deaths of unknown age.

Sources: Delaware Department of Health and Social Services, Division of Public Health, Delaware Health Statistics Center U.S. Census

TABLE F-7. NUMBER OF DEATHS AND MEDIAN AGE AT DEATH BY SEX FOR TWENTY LEADING CAUSES, ALCOHOL-INDUCED DEATHS, AND DRUG-INDUCED DEATHS, DELAWARE, 2016

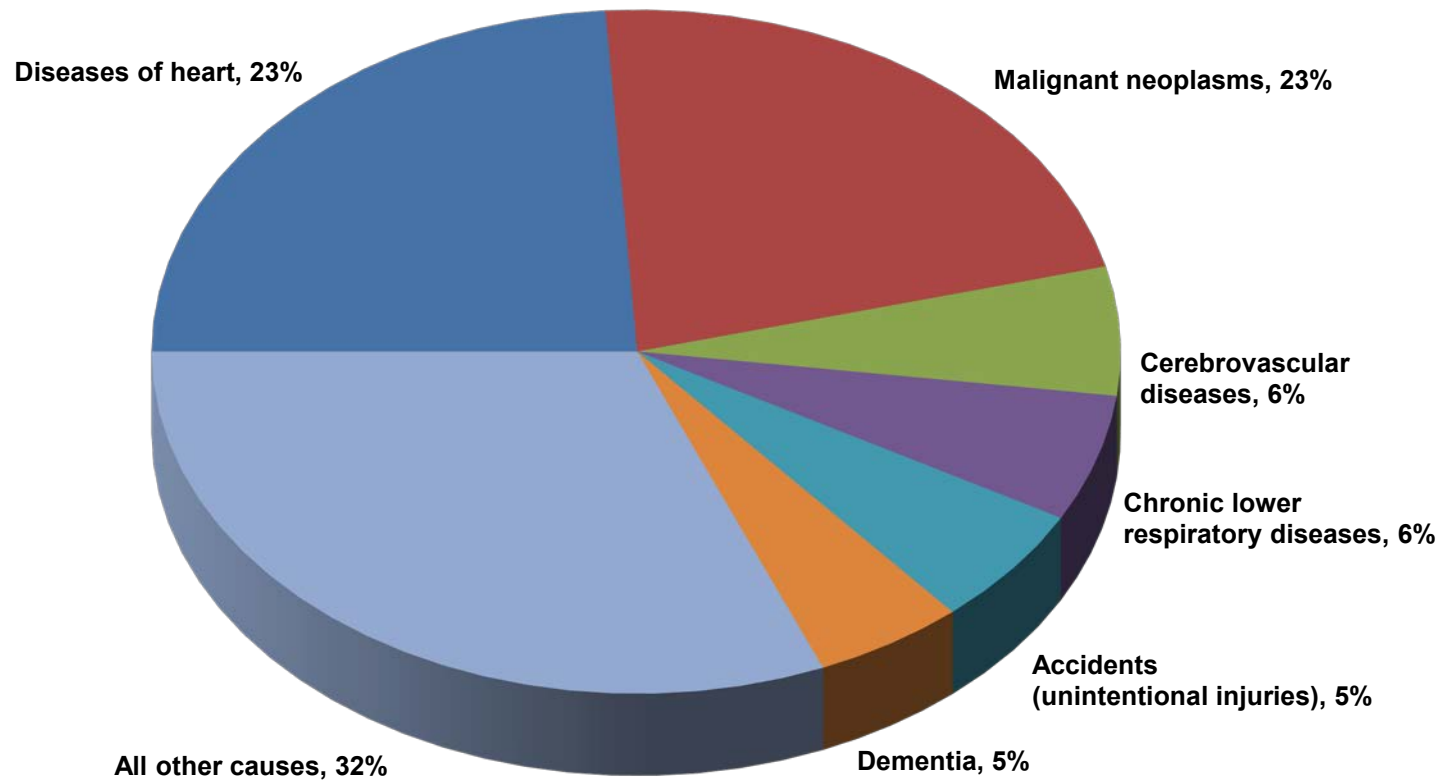
Cause of Death ¹	Deaths		Median Age at Death	
	Number	Percent	Male	Female
All causes	8,872	100.0	73	80
Malignant neoplasms	2,125	24.0	73	73
Diseases of heart	1,955	22.0	76	84
Chronic lower respiratory diseases	540	6.1	75	80
Accidents (unintentional injuries)	534	6.0	45	54
Cerebrovascular diseases	503	5.7	81	85
Dementia	443	5.0	88	90
Alzheimer's disease	329	3.7	86	88
Nephritis, nephrotic syndrome & nephrosis	208	2.3	79	79
Diabetes mellitus	203	2.3	68	75
Septicemia	143	1.6	72	76
Influenza & pneumonia	133	1.5	76	82
Intentional self-harm (suicide)	119	1.3	53	51
Other diseases of respiratory system	117	1.3	80	78
Chronic liver disease & cirrhosis	92	1.0	65	63
Other diseases of circulatory system	84	0.9	76	84
Parkinson's disease	72	0.8	83	84
Pneumonitis due to solids & liquids	71	0.8	85	83
Assault (homicide)	64	0.7	29	25
Essential (primary) hypertension & hypertensive renal disease	58	0.7	81	90
Symptoms, signs & abnormal clinical & lab findings, nec	57	0.6	66	82
Alcohol-induced deaths ²	102	1.1	60	54
Drug-induced deaths ²	299	3.4	38	44

Notes:

1. Classified according to ICD-10 Codes, Tenth Revision. See Appendix E for listing of ICD-10 Codes.
2. Included in selected categories.

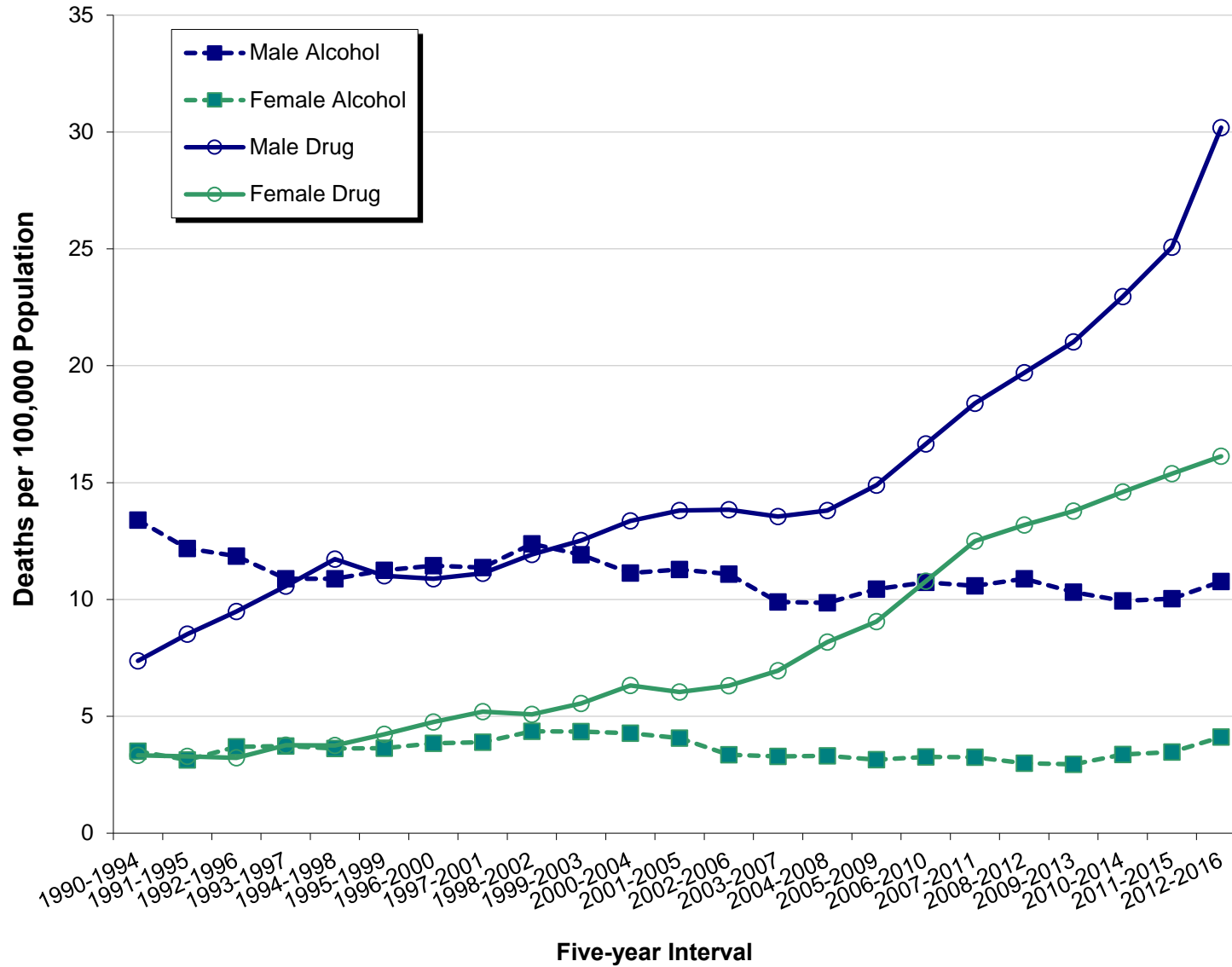
Source: Delaware Department of Health and Social Services, Division of Public Health, Delaware Health Statistics Center

Figure F-1. Leading Causes of Death, Delaware, 2016



Source: Delaware Department of Health and Social Services, Division of Public Health, Delaware Health Statistics Center

Figure F-2. Five-year Age-adjusted Drug- and Alcohol-Induced Mortality Rates by Sex, Delaware, 1990-2016



Source: Delaware Department of Health and Social Services, Division of Public Health, Delaware Health Statistics Center

TABLE F-8. LEADING CAUSES OF DEATH, COUNTIES AND CITY OF WILMINGTON, DELAWARE, 2012-2016

Kent

Cause of Death*	Deaths	
	#	%
Malignant neoplasms	1,850	24.3
Diseases of heart	1,760	23.1
Chronic lower respiratory diseases	460	6.0
Accidents (unintentional injuries)	439	5.8
Cerebrovascular diseases	380	5.0
Diabetes mellitus	208	2.7
Alzheimer's disease	202	2.6
Nephritis, nephrotic syndrome & nephrosis	178	2.3
Septicemia	155	2.0
Influenza & pneumonia	133	1.7
Intentional self-harm (suicide)	120	1.6
Chronic liver disease & cirrhosis	84	1.1
Essential (primary) hypertension & hypertensive renal disease	59	0.8
Parkinson's disease	55	0.7
In situ neoplasms, benign neoplasms & neoplasms of uncertain or unk behavior	55	0.7
Pneumonitis due to solids & liquids	51	0.7
All other causes	1,437	18.8
Total	7,626	100.0

New Castle

Cause of Death*	Deaths	
	#	%
Malignant neoplasms	5,161	23.3
Diseases of heart	4,749	21.4
Cerebrovascular diseases	1,303	5.9
Accidents (unintentional injuries)	1,209	5.5
Chronic lower respiratory diseases	1,181	5.3
Alzheimer's disease	656	3.0
Diabetes mellitus	572	2.6
Nephritis, nephrotic syndrome & nephrosis	485	2.2
Influenza & pneumonia	439	2.0
Septicemia	360	1.6
Intentional self-harm (suicide)	344	1.6
Assault (homicide)	229	1.0
Parkinson's disease	216	1.0
Chronic liver disease & cirrhosis	215	1.0
Certain conditions originating in the perinatal period	185	0.8
Pneumonitis due to solids & liquids	170	0.8
All other causes	4,671	21.1
Total	22,145	100.0

City of Wilmington

Cause of Death*	Deaths	
	#	%
Diseases of heart	742	21.5
Malignant neoplasms	703	20.4
Cerebrovascular diseases	211	6.1
Accidents (unintentional injuries)	191	5.5
Chronic lower respiratory diseases	158	4.6
Diabetes mellitus	112	3.2
Assault (homicide)	109	3.2
Alzheimer's disease	89	2.6
Nephritis, nephrotic syndrome & nephrosis	81	2.3
Human immunodeficiency virus (HIV) disease	65	1.9
Certain conditions originating in the perinatal period	55	1.6
Septicemia	55	1.6
Influenza & pneumonia	51	1.5
Chronic liver disease & cirrhosis	42	1.2
Intentional self-harm (suicide)	39	1.1
Essential (primary) hypertension & hypertensive renal disease	38	1.1
All other causes	712	20.6
Total	3,453	100.0

Sussex

Cause of Death*	Deaths	
	#	%
Diseases of heart	2,943	25.0
Malignant neoplasms	2,934	24.9
Chronic lower respiratory diseases	770	6.5
Accidents (unintentional injuries)	561	4.8
Cerebrovascular diseases	540	4.6
Alzheimer's disease	331	2.8
Diabetes mellitus	321	2.7
Nephritis, nephrotic syndrome & nephrosis	209	1.8
Septicemia	188	1.6
Influenza & pneumonia	181	1.5
Chronic liver disease & cirrhosis	172	1.5
Intentional self-harm (suicide)	150	1.3
Parkinson's disease	120	1.0
Essential (primary) hypertension & hypertensive renal disease	89	0.8
In situ neoplasms, benign neoplasms & neoplasms of uncertain or unk behavior	78	0.7
Pneumonitis due to solids & liquids	77	0.7
All other causes	2,109	17.9
Total	11,773	100.0

Note:*Cause of death categories were derived using the NCHS list of 50 rankable causes of death as specified by NCHS. For specific codes, see Appendix E.

Source: Delaware Department of Health and Social Services, Division of Public Health, Delaware Health Statistics Center

TABLE F-9. TEN LEADING CAUSES OF DEATH BY SEX AND RACE GROUP, DELAWARE, 2012-2016

All Races, Male

Cause of Death*	Deaths	
	#	%
Malignant neoplasms	5,188	24.6
Diseases of heart	5,013	23.8
Accidents (unintentional injuries)	1,431	6.8
Chronic lower respiratory diseases	1,067	5.1
Cerebrovascular diseases	919	4.4
Diabetes mellitus	604	2.9
Intentional self-harm (suicide)	474	2.3
Nephritis, nephrotic syndrome & nephrosis	445	2.1
Alzheimer's disease	396	1.9
Influenza & pneumonia	352	1.7
All other causes	5,158	24.5
Total	21,047	100.0

All Races, Female

Cause of Death*	Deaths	
	#	%
Malignant neoplasms	4,757	23.2
Diseases of heart	4,439	21.7
Chronic lower respiratory diseases	1,344	6.6
Cerebrovascular diseases	1,304	6.4
Alzheimer's disease	793	3.9
Accidents (unintentional injuries)	778	3.8
Diabetes mellitus	497	2.4
Nephritis, nephrotic syndrome & nephrosis	427	2.1
Influenza & pneumonia	401	2.0
Septicemia	365	1.8
All other causes	5,392	26.3
Total	20,497	100.0

White, Both Sexes

Cause of Death*	Deaths	
	#	%
Malignant neoplasms	8,084	24.1
Diseases of heart	7,738	23.0
Chronic lower respiratory diseases	2,118	6.3
Accidents (unintentional injuries)	1,812	5.4
Cerebrovascular diseases	1,748	5.2
Alzheimer's disease	999	3.0
Diabetes mellitus	783	2.3
Influenza & pneumonia	648	1.9
Nephritis, nephrotic syndrome & nephrosis	621	1.8
Septicemia	561	1.7
All other causes	8,467	25.2
Total	33,579	100.0

Black, Both Sexes

Cause of Death*	Deaths	
	#	%
Malignant neoplasms	1,649	23.3
Diseases of heart	1,542	21.8
Cerebrovascular diseases	414	5.8
Accidents (unintentional injuries)	336	4.7
Diabetes mellitus	291	4.1
Chronic lower respiratory diseases	268	3.8
Nephritis, nephrotic syndrome & nephrosis	229	3.2
Assault (homicide)	211	3.0
Alzheimer's disease	167	2.4
Septicemia	130	1.8
All other causes	1,849	26.1
Total	7,086	100.0

Hispanic, Both Sexes

Cause of Death*	Deaths	
	#	%
Malignant neoplasms	218	20.4
Diseases of heart	187	17.5
Accidents (unintentional injuries)	94	8.8
Cerebrovascular diseases	64	6.0
Certain conditions originating in the perinatal period	47	4.4
Chronic lower respiratory diseases	39	3.7
Diabetes mellitus	33	3.1
Alzheimer's disease	28	2.6
Chronic liver disease & cirrhosis	26	2.4
Intentional self-harm (suicide)	23	2.2
All other causes	309	28.9
Total	1,068	100.0

Notes:

1. Cause of death categories were derived using the NCHS list of 50 rankable causes of death as specified by NCHS. For specific codes, see Appendix E.
2. There was a three-way tie for the tenth most common cause of Hispanic death; Alzheimer's disease also accounted for 19 deaths.

Source: Delaware Department of Health and Social Services, Division of Public Health, Delaware Health Statistics Center

TABLE F-10. TEN LEADING CAUSES OF DEATH BY RACE-SEX GROUP, DELAWARE, 2012-2016

White Males

Cause of Death*	Deaths	
	#	%
Malignant neoplasms	4,290	25.2
Diseases of heart	4,145	24.3
Accidents (unintentional injuries)	1,159	6.8
Chronic lower respiratory diseases	927	5.4
Cerebrovascular diseases	703	4.1
Diabetes mellitus	437	2.6
Intentional self-harm (suicide)	417	2.4
Alzheimer's disease	341	2.0
Nephritis, nephrotic syndrome & nephrosis	317	1.9
Influenza & pneumonia	304	1.8
All other causes	3,987	23.4
Total	17,027	100.0

White Females

Cause of Death*	Deaths	
	#	%
Malignant neoplasms	3,794	22.9
Diseases of heart	3,593	21.7
Chronic lower respiratory diseases	1,191	7.2
Cerebrovascular diseases	1,045	6.3
Alzheimer's disease	658	4.0
Accidents (unintentional injuries)	653	3.9
Diabetes mellitus	346	2.1
Influenza & pneumonia	344	2.1
Nephritis, nephrotic syndrome & nephrosis	304	1.8
Septicemia	287	1.7
All other causes	4,337	26.2
Total	16,552	100.0

Black Males

Cause of Death*	Deaths	
	#	%
Malignant neoplasms	786	22.1
Diseases of heart	774	21.8
Accidents (unintentional injuries)	236	6.6
Cerebrovascular diseases	188	5.3
Assault (homicide)	186	5.2
Diabetes mellitus	152	4.3
Chronic lower respiratory diseases	122	3.4
Nephritis, nephrotic syndrome & nephrosis	115	3.2
Certain conditions originating in the perinatal period	76	2.1
Human immunodeficiency virus (HIV) disease	75	2.1
All other causes	844	23.7
Total	3,554	100.0

Black Females

Cause of Death*	Deaths	
	#	%
Malignant neoplasms	863	24.4
Diseases of heart	768	21.7
Cerebrovascular diseases	226	6.4
Chronic lower respiratory diseases	146	4.1
Diabetes mellitus	139	3.9
Alzheimer's disease	117	3.3
Nephritis, nephrotic syndrome & nephrosis	114	3.2
Accidents (unintentional injuries)	100	2.8
Septicemia	71	2.0
Influenza & pneumonia	54	1.5
All other causes	934	26.4
Total	3,532	100.0

Hispanic Males

Cause of Death*	Deaths	
	#	%
Malignant neoplasms	124	20.1
Diseases of heart	114	18.4
Accidents (unintentional injuries)	70	11.3
Cerebrovascular diseases	34	5.5
Certain conditions originating in the perinatal period	28	4.5
Chronic lower respiratory diseases	25	4.0
Diabetes mellitus	22	3.6
Chronic liver disease & cirrhosis	17	2.8
Assault (homicide)	16	2.6
Intentional self-harm (suicide)	16	2.6
All other causes	152	24.6
Total	618	100.0

Hispanic Females

Cause of Death*	Deaths	
	#	%
Malignant neoplasms	94	20.9
Diseases of heart	73	16.2
Cerebrovascular diseases	30	6.7
Accidents (unintentional injuries)	24	5.3
Alzheimer's disease	22	4.9
Certain conditions originating in the perinatal period	19	4.2
Chronic lower respiratory diseases	14	3.1
Septicemia	13	2.9
Diabetes mellitus	11	2.4
Nephritis, nephrotic syndrome & nephrosis	10	2.2
All other causes	140	31.1
Total	450	100.0

Note: *Cause of death categories were derived using the NCHS list of 50 rankable causes of death as specified by NCHS. For specific codes, see Appendix E.

Source: Delaware Department of Health and Social Services, Division of Public Health, Delaware Health Statistics Center

TABLE F-11. TEN LEADING CAUSES OF DEATH BY AGE, DELAWARE, 2012-2016

1-4 Years

Cause of Death*	Deaths	
	Number	Percent
Accidents (unintentional injuries)	11	55.0
Assault (homicide)	7	35.0
Malignant neoplasms	7	35.0
Congenital malformations, deformations, & Chronic lower respiratory diseases	6	30.0
Diseases of heart	2	10.0
Nephritis, nephrotic syndrome & nephrosis	2	10.0
Influenza & pneumonia	1	5.0
In situ neoplasms, benign neoplasms & neoplasms	1	5.0
Pneumonitis due to solids & liquids	0	0.0
Other	20	100.0
Total	58	100.0

5-14 Years

Cause of Death*	Deaths	
	Number	Percent
Accidents (unintentional injuries)	12	17.4
Malignant neoplasms	10	14.5
Intentional self-harm (suicide)	7	10.1
Congenital malformations, deformations, & Diseases of heart	7	10.1
Chronic lower respiratory diseases	5	7.2
Complications of medical & surgical care	2	2.9
Assault (homicide)	1	1.4
Certain conditions originating in the perinatal period	1	1.4
Pneumonitis due to solids & liquids	1	1.4
All other causes	22	31.9
Total	69	100.0

15-24 Years

Cause of Death*	Deaths	
	Number	Percent
Accidents (unintentional injuries)	187	42.1
Assault (homicide)	85	19.1
Intentional self-harm (suicide)	71	16.0
Malignant neoplasms	18	4.1
Diseases of heart	13	2.9
Human immunodeficiency virus (HIV) disease	5	1.1
Septicemia	5	1.1
Chronic lower respiratory diseases	4	0.9
Diabetes mellitus	3	0.7
Complications of medical & surgical care	2	0.5
All other causes	51	11.5
Total	444	100.0

25-44 Years

Cause of Death*	Deaths	
	Number	Percent
Accidents (unintentional injuries)	697	35.5
Diseases of heart	233	11.9
Malignant neoplasms	198	10.1
Intentional self-harm (suicide)	184	9.4
Assault (homicide)	141	7.2
Diabetes mellitus	45	2.3
Chronic liver disease & cirrhosis	30	1.5
Human immunodeficiency virus (HIV) disease	27	1.4
Cerebrovascular diseases	24	1.2
Septicemia	22	1.1
All other causes	361	18.4
Total	1,962	100.0

45-64 Years

Cause of Death*	Deaths	
	Number	Percent
Malignant neoplasms	2,681	32.3
Diseases of heart	1,625	19.6
Accidents (unintentional injuries)	680	8.2
Chronic lower respiratory diseases	310	3.7
Diabetes mellitus	305	3.7
Cerebrovascular diseases	270	3.2
Intentional self-harm (suicide)	245	2.9
Chronic liver disease & cirrhosis	241	2.9
Nephritis, nephrotic syndrome & nephrosis	167	2.0
Septicemia	145	1.7
All other causes	1,643	19.8
Total	8,312	100.0

65+ Years

Cause of Death*	Deaths	
	Number	Percent
Diseases of heart	7,567	25.0
Malignant neoplasms	7,031	23.2
Chronic lower respiratory diseases	2,074	6.8
Cerebrovascular diseases	1,923	6.3
Alzheimer's disease	1,173	3.9
Diabetes mellitus	747	2.5
Nephritis, nephrotic syndrome & nephrosis	690	2.3
Influenza & pneumonia	642	2.1
Accidents (unintentional injuries)	613	2.0
Septicemia	528	1.7
All other causes	7,298	24.1
Total	30,286	100.0

Note:

*Cause of death categories were derived using the NCHS list of 50 rankable causes of death as specified by NCHS. For specific codes, see Appendix E.

Source: Delaware Department of Health and Social Services, Division of Public Health, Delaware Health Statistics Center

**TABLE F-12. NUMBER OF DEATHS BY AGE FOR SELECTED LEADING CAUSES OF DEATH, DELAWARE, 2016
ALL RACES, BOTH SEXES**

Cause of Death*	Age of Decedent													
	Total	< 1	1-4	5-9	10-14	15-19	20-24	25-34	35-44	45-54	55-64	65-74	75+	Unk
Diseases of the heart (I00-I09, I11, I13, I20-I51)	1955	2	0	0	0	1	1	9	35	98	221	367	1221	0
Acute rheumatic fever and chronic rheumatic heart disease (I00-I09)	10	0	0	0	0	0	0	0	0	2	1	0	7	0
Hypertensive heart disease (I11)	106	0	0	0	0	0	0	2	8	17	26	26	27	0
Hypertensive heart and renal disease (I13)	18	0	0	0	0	0	0	0	0	1	1	3	13	0
Ischemic heart disease (I20-I25)	1212	0	0	0	0	0	0	1	18	51	144	235	763	0
All other forms of heart disease (I26-I51)	609	2	0	0	0	1	1	6	9	27	49	103	411	0
Malignant neoplasms (C00-C97)	2125	0	1	1	3	2	3	16	33	122	396	610	938	0
Malignant neoplasms of lip, oral cavity and pharynx (C00-C14)	30	0	0	0	0	0	0	0	0	1	14	7	8	0
Malignant neoplasms of digestive organs (C15-C26)	550	0	0	0	0	0	0	3	8	40	123	141	235	0
Malignant neoplasms of respiratory and intrathoracic organs (C30-C39)	578	0	0	0	0	0	0	1	5	30	112	201	229	0
Malignant neoplasms of breast (C50)	144	0	0	0	0	0	0	1	3	17	34	32	57	0
Malignant neoplasms of female genital organs, (C51-C58)	97	0	0	0	0	0	0	1	4	5	23	24	40	0
Malignant neoplasms of male genital organs, (C60-C63)	102	0	0	0	0	0	0	1	0	1	8	32	60	0
Malignant neoplasms of urinary tract (C64-C68)	136	0	0	0	0	0	0	0	1	2	12	41	80	0
Malignant neoplasms of meninges, brain, and other parts of central nervous system (C70-C72)	67	0	1	1	1	1	1	2	2	5	16	18	19	0
Malignant neoplasms of lymphoid, hematopoietic, and related tissues (C81-C96)	221	0	0	0	0	1	2	4	4	11	26	61	112	0
All other and unspecified malignant neoplasms (C40-C49, C69, C73-C80,C97)	200	0	0	0	2	0	0	3	6	10	28	53	98	0
Cerebrovascular diseases (I60-I69)	503	1	0	0	0	0	0	1	4	15	38	76	368	0

See footnote at the end of the table

TABLE F-12. NUMBER OF DEATHS BY AGE FOR SELECTED LEADING CAUSES OF DEATH, DELAWARE, 2016
ALL RACES, BOTH SEXES - CONTINUED

	Age of Decedent													Unk
	Total	< 1	1-4	5-9	10-14	15-19	20-24	25-34	35-44	45-54	55-64	65-74	75+	
Chronic lower respiratory diseases (J40-J47)	540	0	1	0	1	0	0	0	3	9	55	154	317	0
Accidents (unintentional injuries) (V01-X59, Y85-Y86)	534	2	1	1	1	8	36	112	76	102	77	40	78	0
Motor Vehicle Accidents (V02-V04, (V09.0,V09.2,V12-V14, V19.0-V19.2, V19.4-V19.6,V20-V79, V80.3-V80.5, V81.0-V81.1, V82.0-V82.1, V83-V86, V87.0-V87.8, V88.0-V88.8,V89.0,V89.2)	118	0	0	1	1	4	16	20	17	17	19	13	10	0
Nontransport Accidents (W00-X59, Y86)	411	2	1	0	0	4	19	91	59	84	57	27	67	0
Diabetes mellitus (E10-E14)	203	0	0	0	0	2	0	1	10	15	35	52	88	0
Influenza and pneumonia (J10-J18)	133	0	0	0	0	0	0	0	2	6	18	26	81	0
Alzheimer's disease (G30)	329	0	0	0	0	0	0	0	0	0	6	27	296	0
Nephritis, nephrotic syndrome, and nephrosis (N00-N07, N17-N19, N25-N27)	208	0	0	0	0	0	1	0	3	7	33	34	130	0
Septicemia (A40-A41)	143	2	0	0	0	1	1	0	5	9	20	33	72	0
Intentional self-harm (suicide) (X60-X84, Y87.0)	119	0	0	0	1	4	8	17	12	25	27	13	12	0
Chronic liver disease and cirrhosis (K70, K73-K74)	92	0	0	0	0	0	0	2	3	17	25	29	16	0
Essential hypertension and hypertensive renal disease (I10, I12)	58	0	0	0	0	0	0	0	2	5	6	5	40	0
Aortic aneurysm and dissection (I71)	34	0	0	0	0	0	0	0	0	4	3	8	19	0
Assault (homicide) (X85-Y09, Y87.1)	64	0	1	0	0	10	10	24	7	8	2	1	1	0
Human immunodeficiency virus (HIV) (B20-B24)	17	0	0	0	0	0	2	3	1	6	4	1	0	0
Certain conditions originating in the perinatal period (P00-P96)	55	55	0	0	0	0	0	0	0	0	0	0	0	0
Congenital malformations, deformations, and chromosomal abnormalities (Q00-Q99)	23	9	2	1	2	0	0	0	2	0	3	2	2	0
All other causes	1737	16	1	5	1	3	2	18	29	89	175	285	1113	0
TOTAL	8872	87	7	8	9	31	64	203	227	537	1144	1763	4792	0

Note: *ICD Codes, Tenth Revision.

Source: Delaware Department of Health and Social Services, Division of Public Health, Delaware Health Statistics Center

TABLE F-13. NUMBER OF DEATHS BY AGE FOR SELECTED LEADING CAUSES OF DEATH BY COUNTY, DELAWARE, 2016

KENT

ALL RACES, BOTH SEXES

Cause of Death*	Age of Decedent													
	Total	< 1	1-4	5-9	10-14	15-19	20-24	25-34	35-44	45-54	55-64	65-74	75+	Unk
Diseases of the heart (I00-I09, I11, I13, I20-I51)	387	0	0	0	0	0	0	2	10	21	45	97	212	0
Acute rheumatic fever and chronic rheumatic heart disease (I00-I09)	4	0	0	0	0	0	0	0	0	1	0	0	3	0
Hypertensive heart disease (I11)	26	0	0	0	0	0	0	0	3	4	4	9	6	0
Hypertensive heart and renal disease (I13)	4	0	0	0	0	0	0	0	0	1	0	0	3	0
Ischemic heart disease (I20-I25)	245	0	0	0	0	0	0	1	4	12	30	66	132	0
All other forms of heart disease (I26-I51)	108	0	0	0	0	0	0	1	3	3	11	22	68	0
Malignant neoplasms (C00-C97)	366	0	0	0	1	0	0	3	6	22	75	107	152	0
Malignant neoplasms of lip, oral cavity and pharynx (C00-C14)	3	0	0	0	0	0	0	0	0	0	0	1	2	0
Malignant neoplasms of digestive organs (C15-C26)	70	0	0	0	0	0	0	2	0	5	19	14	30	0
Malignant neoplasms of respiratory and intrathoracic organs (C30-C39)	110	0	0	0	0	0	0	0	1	2	27	39	41	0
Malignant neoplasms of breast (C50)	32	0	0	0	0	0	0	0	2	5	4	10	11	0
Malignant neoplasms of female genital organs, (C51-C58)	22	0	0	0	0	0	0	0	2	2	3	6	9	0
Malignant neoplasms of male genital organs, (C60-C63)	12	0	0	0	0	0	0	0	0	0	1	3	8	0
Malignant neoplasms of urinary tract (C64-C68)	29	0	0	0	0	0	0	0	1	0	2	7	19	0
Malignant neoplasms of meninges, brain, and other parts of central nervous system (C70-C72)	13	0	0	0	1	0	0	0	0	1	5	2	4	0
Malignant neoplasms of lymphoid, hematopoietic, and related tissues (C81-C96)	37	0	0	0	0	0	0	0	0	4	6	11	16	0
All other and unspecified malignant neoplasms (C40-C49, C69, C73-C80, C97)	38	0	0	0	0	0	0	1	0	3	8	14	12	0
Cerebrovascular diseases (I60-I69)	85	0	0	0	0	0	0	0	1	6	8	11	59	0

See Footnote at the end of the table

TABLE F-13. NUMBER OF DEATHS BY AGE FOR SELECTED LEADING CAUSES OF DEATH BY COUNTY, DELAWARE, 2016

KENT

ALL RACES, BOTH SEXES - CONTINUED

	Age of Decedent													
	Total	< 1	1-4	5-9	10-14	15-19	20-24	25-34	35-44	45-54	55-64	65-74	75+	Unk
Chronic lower respiratory diseases (J40-J47)	100	0	1	0	1	0	0	0	2	2	7	34	53	0
Accidents (unintentional injuries) (V01-X59, Y85-Y86)	105	0	0	1	0	3	9	17	18	17	24	4	12	0
Motor Vehicle Accidents (V02-V04, V09.0, V09.2, V12-V14, V19.0-V19.2, V19.4-V19.6, V20-V79, V80.3-V80.5, V81.0-V81.1, V82.0-V82.1, V83-V86, V87.0-V87.8, V88.0-V88.8, V89.0, V89.2)	34	0	0	1	0	2	7	4	5	4	6	3	2	0
Nontransport Accidents (W00-X59, Y86)	69	0	0	0	0	1	2	13	13	13	17	1	9	0
Diabetes mellitus (E10-E14)	48	0	0	0	0	0	0	1	3	3	7	13	21	0
Influenza and pneumonia (J10-J18)	26	0	0	0	0	0	0	0	1	1	3	9	12	0
Alzheimer's disease (G30)	58	0	0	0	0	0	0	0	0	0	0	8	50	0
Nephritis, nephrotic syndrome, and nephrosis (N00-N07, N17-N19, N25-N27)	49	0	0	0	0	0	1	0	1	3	9	10	25	0
Septicemia (A40-A41)	33	0	0	0	0	0	0	0	0	0	5	5	23	0
Intentional self-harm (suicide) (X60-X84, Y87.0)	20	0	0	0	0	0	1	2	4	7	3	2	1	0
Chronic liver disease and cirrhosis (K70, K73-K74)	17	0	0	0	0	0	0	0	0	5	5	5	2	0
Essential hypertension and hypertensive renal disease (I10, I12)	12	0	0	0	0	0	0	0	0	2	1	0	9	0
Aortic aneurysm and dissection (I71)	4	0	0	0	0	0	0	0	0	0	0	1	3	0
Assault (homicide) (X85-Y09, Y87.1)	11	0	1	0	0	1	3	5	0	1	0	0	0	0
Human immunodeficiency virus (HIV) (B20-B24)	3	0	0	0	0	0	0	0	1	1	0	1	0	0
Certain conditions originating in the perinatal period (P00-P96)	8	8	0	0	0	0	0	0	0	0	0	0	0	0
Congenital malformations, deformations, and chromosomal abnormalities (Q00-Q99)	4	2	0	0	1	0	0	0	1	0	0	0	0	0
All other causes	290	4	0	0	0	1	0	2	4	16	30	59	174	0
TOTAL	1626	14	2	1	3	5	14	32	52	107	222	366	808	0

Note: *ICD Codes, Tenth Revision.

Source: Delaware Department of Health and Social Services, Division of Public Health, Delaware Health Statistics Center

TABLE F-14. NUMBER OF DEATHS BY AGE FOR SELECTED LEADING CAUSES OF DEATH BY COUNTY, DELAWARE, 2016

**NEW CASTLE
ALL RACES, BOTH SEXES**

Cause of Death*	Age of Decedent													
	Total	< 1	1-4	5-9	10-14	15-19	20-24	25-34	35-44	45-54	55-64	65-74	75+	Unk
Diseases of the heart (I00-I09, I11, I13, I20-I51)	972	1	0	0	0	1	0	4	12	55	121	173	605	0
Acute rheumatic fever and chronic rheumatic heart disease (I00-I09)	1	0	0	0	0	0	0	0	0	0	1	0	0	0
Hypertensive heart disease (I11)	52	0	0	0	0	0	0	0	4	11	14	10	13	0
Hypertensive heart and renal disease (I13)	10	0	0	0	0	0	0	0	0	0	1	3	6	0
Ischemic heart disease (I20-I25)	590	0	0	0	0	0	0	0	7	25	80	109	369	0
All other forms of heart disease (I26-I51)	319	1	0	0	0	1	0	4	1	19	25	51	217	0
Malignant neoplasms (C00-C97)	1097	0	0	1	2	1	3	10	19	73	225	275	488	0
Malignant neoplasms of lip, oral cavity and pharynx (C00-C14)	21	0	0	0	0	0	0	0	0	1	11	4	5	0
Malignant neoplasms of digestive organs (C15-C26)	310	0	0	0	0	0	0	0	4	27	71	72	136	0
Malignant neoplasms of respiratory and intrathoracic organs (C30-C39)	290	0	0	0	0	0	0	1	2	21	65	86	115	0
Malignant neoplasms of breast (C50)	65	0	0	0	0	0	0	1	1	7	21	14	21	0
Malignant neoplasms of female genital organs, (C51-C58)	50	0	0	0	0	0	0	1	2	2	13	10	22	0
Malignant neoplasms of male genital organs, (C60-C63)	52	0	0	0	0	0	0	1	0	0	4	15	32	0
Malignant neoplasms of urinary tract (C64-C68)	62	0	0	0	0	0	0	0	0	2	9	15	36	0
Malignant neoplasms of meninges, brain, and other parts of central nervous system (C70-C72)	32	0	0	1	0	0	1	2	2	3	6	10	7	0
Malignant neoplasms of lymphoid, hematopoietic, and related tissues (C81-C96)	117	0	0	0	0	1	2	4	4	4	14	29	59	0
All other and unspecified malignant neoplasms (C40-C49, C69, C73-C80,C97)	98	0	0	0	2	0	0	0	4	6	11	20	55	0
Cerebrovascular diseases (I60-I69)	287	1	0	0	0	0	0	0	1	5	21	44	215	0

See footnote at the end of the table

TABLE F-14. NUMBER OF DEATHS BY AGE FOR SELECTED LEADING CAUSES OF DEATH BY COUNTY, DELAWARE, 2016

NEW CASTLE

ALL RACES, BOTH SEXES - CONTINUED

	Age of Decedent													
	Total	< 1	1-4	5-9	10-14	15-19	20-24	25-34	35-44	45-54	55-64	65-74	75+	Unk
Chronic lower respiratory diseases (J40-J47)	258	0	0	0	0	0	0	0	0	4	28	63	163	0
Accidents (unintentional injuries) (V01-X59, Y85-Y86)	284	1	1	0	1	3	19	57	34	63	37	25	43	0
Motor Vehicle Accidents (V02-V04, V09.0,V09.2,V12-V14, V19.0-V19.2, V19.4-V19.6,V20-V79, V80.3-V80.5, V81.0-V81.1, V82.0-V82.1, V83-V86, V87.0-V87.8, V88.0-V88.8,V89.0,V89.2)	47	0	0	0	1	1	5	8	5	12	8	5	2	0
Nontransport Accidents (W00-X59, Y86)	236	1	1	0	0	2	14	48	29	51	29	20	41	0
Diabetes mellitus (E10-E14)	95	0	0	0	0	2	0	0	6	9	21	22	35	0
Influenza and pneumonia (J10-J18)	75	0	0	0	0	0	0	0	1	4	12	14	44	0
Alzheimer's disease (G30)	184	0	0	0	0	0	0	0	0	0	5	11	168	0
Nephritis, nephrotic syndrome, and nephrosis (N00-N07, N17-N19, N25-N27)	108	0	0	0	0	0	0	0	1	4	20	16	67	0
Septicemia (A40-A41)	75	2	0	0	0	1	1	0	3	6	13	18	31	0
Intentional self-harm (suicide) (X60-X84, Y87.0)	65	0	0	0	1	3	5	13	7	13	12	4	7	0
Chronic liver disease and cirrhosis (K70, K73-K74)	37	0	0	0	0	0	0	1	0	10	9	10	7	0
Essential hypertension and hypertensive renal disease (I10, I12)	31	0	0	0	0	0	0	0	2	3	5	4	17	0
Aortic aneurysm and dissection (I71)	19	0	0	0	0	0	0	0	0	2	3	5	9	0
Assault (homicide) (X85-Y09, Y87.1)	46	0	0	0	0	9	6	17	6	6	1	1	0	0
Human immunodeficiency virus (HIV) (B20-B24)	9	0	0	0	0	0	0	2	0	3	4	0	0	0
Certain conditions originating in the perinatal period (P00-P96)	43	43	0	0	0	0	0	0	0	0	0	0	0	0
Congenital malformations, deformations, and chromosomal abnormalities (Q00-Q99)	11	4	0	0	1	0	0	0	1	0	2	1	2	0
All other causes	970	10	1	2	1	1	1	13	17	59	95	140	630	0
TOTAL	4666	62	2	3	6	21	35	117	110	319	634	826	2531	0

Note: *ICD Codes, Tenth Revision.

Source: Delaware Department of Health and Social Services, Division of Public Health, Delaware Health Statistics Center

TABLE F-15. NUMBER OF DEATHS BY AGE FOR SELECTED LEADING CAUSES OF DEATH, DELAWARE, 2016

CITY OF WILMINGTON

ALL RACES, BOTH SEXES

Cause of Death*	Age of Decedent													
	Total	< 1	1-4	5-9	10-14	15-19	20-24	25-34	35-44	45-54	55-64	65-74	75+	Unk
Diseases of the heart (I00-I09, I11, I13, I20-I51)	160	0	0	0	0	0	0	4	3	10	26	35	82	0
Acute rheumatic fever and chronic rheumatic heart disease (I00-I09)	0	0	0	0	0	0	0	0	0	0	0	0	0	0
Hypertensive heart disease (I11)	10	0	0	0	0	0	0	0	1	1	2	4	2	0
Hypertensive heart and renal disease (I13)	2	0	0	0	0	0	0	0	0	0	0	1	1	0
Ischemic heart disease (I20-I25)	101	0	0	0	0	0	0	0	1	4	17	18	61	0
All other forms of heart disease (I26-I51)	47	0	0	0	0	0	0	4	1	5	7	12	18	0
Malignant neoplasms (C00-C97)	131	0	0	0	0	0	0	0	1	7	37	34	52	0
Malignant neoplasms of lip, oral cavity and pharynx (C00-C14)	4	0	0	0	0	0	0	0	0	0	2	1	1	0
Malignant neoplasms of digestive organs (C15-C26)	39	0	0	0	0	0	0	0	0	4	12	10	13	0
Malignant neoplasms of respiratory and intrathoracic organs (C30-C39)	39	0	0	0	0	0	0	0	0	2	12	8	17	0
Malignant neoplasms of breast (C50)	5	0	0	0	0	0	0	0	0	0	2	1	2	0
Malignant neoplasms of female genital organs, (C51-C58)	7	0	0	0	0	0	0	0	0	0	3	1	3	0
Malignant neoplasms of male genital organs, (C60-C63)	5	0	0	0	0	0	0	0	0	0	0	3	2	0
Malignant neoplasms of urinary tract (C64-C68)	7	0	0	0	0	0	0	0	0	0	0	3	4	0
Malignant neoplasms of meninges, brain, and other parts of central nervous system (C70-C72)	1	0	0	0	0	0	0	0	0	0	1	0	0	0
Malignant neoplasms of lymphoid, hematopoietic, and related tissues (C81-C96)	15	0	0	0	0	0	0	0	1	1	4	3	6	0
All other and unspecified malignant neoplasms (C40-C49, C69, C73-C80,C97)	9	0	0	0	0	0	0	0	0	0	1	4	4	0
Cerebrovascular diseases (I60-I69)	51	0	0	0	0	0	0	0	0	3	11	13	24	0

See footnote at the end of the table

TABLE F-15. NUMBER OF DEATHS BY AGE FOR SELECTED LEADING CAUSES OF DEATH, DELAWARE, 2016

CITY OF WILMINGTON

ALL RACES, BOTH SEXES - CONTINUED

	Age of Decedent													
	Total	< 1	1-4	5-9	10-14	15-19	20-24	25-34	35-44	45-54	55-64	65-74	75+	Unk
Chronic lower respiratory diseases (J40-J47)	43	0	0	0	0	0	0	0	0	1	5	10	27	0
Accidents (unintentional injuries) (V01-X59, Y85-Y86)	49	1	1	0	0	0	3	7	5	21	4	4	3	0
Motor Vehicle Accidents (V02-V04, (V09.0,V09.2,V12-V14, V19.0-V19.2, V19.4-V19.6,V20-V79, V80.3-V80.5, V81.0-V81.1, V82.0-V82.1, V83-V86, V87.0-V87.8, V88.0-V88.8,V89.0,V89.2)	10	0	0	0	0	0	2	1	2	2	2	1	0	0
Nontransport Accidents (W00-X59, Y86)	39	1	1	0	0	0	1	6	3	19	2	3	3	0
Diabetes mellitus (E10-E14)	17	0	0	0	0	1	0	0	1	2	2	2	9	0
Influenza and pneumonia (J10-J18)	9	0	0	0	0	0	0	0	0	1	0	3	5	0
Alzheimer's disease (G30)	30	0	0	0	0	0	0	0	0	0	0	1	29	0
Nephritis, nephrotic syndrome, and nephrosis (N00-N07, N17-N19, N25-N27)	17	0	0	0	0	0	0	0	0	2	5	1	9	0
Septicemia (A40-A41)	11	0	0	0	0	0	0	0	1	1	1	3	5	0
Intentional self-harm (suicide) (X60-X84, Y87.0)	8	0	0	0	0	0	0	2	4	1	0	1	0	0
Chronic liver disease and cirrhosis (K70, K73-K74)	5	0	0	0	0	0	0	0	0	1	0	2	2	0
Essential hypertension and hypertensive renal disease (I10, I12)	8	0	0	0	0	0	0	0	1	0	3	1	3	0
Aortic aneurysm and dissection (I71)	1	0	0	0	0	0	0	0	0	0	0	1	0	0
Assault (homicide) (X85-Y09, Y87.1)	21	0	0	0	0	3	4	10	1	3	0	0	0	0
Human immunodeficiency virus (HIV) (B20-B24)	3	0	0	0	0	0	0	0	0	2	1	0	0	0
Certain conditions originating in the perinatal period (P00-P96)	14	14	0	0	0	0	0	0	0	0	0	0	0	0
Congenital malformations, deformations, and chromosomal abnormalities (Q00-Q99)	0	0	0	0	0	0	0	0	0	0	0	0	0	0
All other causes	138	3	0	1	0	0	0	7	4	14	13	19	77	0
TOTAL	716	18	1	1	0	4	7	30	21	69	108	130	327	0

Note: *ICD Codes, Tenth Revision.

Source: Delaware Department of Health and Social Services, Division of Public Health, Delaware Health Statistics Center

TABLE F-16. NUMBER OF DEATHS BY AGE FOR SELECTED LEADING CAUSES OF DEATH BY COUNTY, DELAWARE, 2016

SUSSEX

ALL RACES, BOTH SEXES

Cause of Death*	Age of Decedent													
	Total	< 1	1-4	5-9	10-14	15-19	20-24	25-34	35-44	45-54	55-64	65-74	75+	Unk
Diseases of the heart (I00-I09, I11, I13, I20-I51)	596	1	0	0	0	0	1	3	13	22	55	97	404	0
Acute rheumatic fever and chronic rheumatic heart disease (I00-I09)	5	0	0	0	0	0	0	0	0	1	0	0	4	0
Hypertensive heart disease (I11)	28	0	0	0	0	0	0	2	1	2	8	7	8	0
Hypertensive heart and renal disease (I13)	4	0	0	0	0	0	0	0	0	0	0	0	4	0
Ischemic heart disease (I20-I25)	377	0	0	0	0	0	0	0	7	14	34	60	262	0
All other forms of heart disease (I26-I51)	182	1	0	0	0	0	1	1	5	5	13	30	126	0
Malignant neoplasms (C00-C97)	662	0	1	0	0	1	0	3	8	27	96	228	298	0
Malignant neoplasms of lip, oral cavity and pharynx (C00-C14)	6	0	0	0	0	0	0	0	0	0	3	2	1	0
Malignant neoplasms of digestive organs (C15-C26)	170	0	0	0	0	0	0	1	4	8	33	55	69	0
Malignant neoplasms of respiratory and intrathoracic organs (C30-C39)	178	0	0	0	0	0	0	0	2	7	20	76	73	0
Malignant neoplasms of breast (C50)	47	0	0	0	0	0	0	0	0	5	9	8	25	0
Malignant neoplasms of female genital organs, (C51-C58)	25	0	0	0	0	0	0	0	0	1	7	8	9	0
Malignant neoplasms of male genital organs, (C60-C63)	38	0	0	0	0	0	0	0	0	1	3	14	20	0
Malignant neoplasms of urinary tract (C64-C68)	45	0	0	0	0	0	0	0	0	0	1	19	25	0
Malignant neoplasms of meninges, brain, and other parts of central nervous system (C70-C72)	22	0	1	0	0	1	0	0	0	1	5	6	8	0
Malignant neoplasms of lymphoid, hematopoietic, and related tissues (C81-C96)	67	0	0	0	0	0	0	0	0	3	6	21	37	0
All other and unspecified malignant neoplasms (C40-C49, C69, C73-C80,C97)	64	0	0	0	0	0	0	2	2	1	9	19	31	0
Cerebrovascular diseases (I60-I69)	131	0	0	0	0	0	0	1	2	4	9	21	94	0

See footnote at the end of the table

TABLE F-16. NUMBER OF DEATHS BY AGE FOR SELECTED LEADING CAUSES OF DEATH BY COUNTY, DELAWARE, 2016

SUSSEX

ALL RACES, BOTH SEXES - CONTINUED

	Age of Decedent													
	Total	< 1	1-4	5-9	10-14	15-19	20-24	25-34	35-44	45-54	55-64	65-74	75+	Unk
Chronic lower respiratory diseases (J40-J47)	182	0	0	0	0	0	0	0	1	3	20	57	101	0
Accidents (unintentional injuries) (V01-X59, Y85-Y86)	145	1	0	0	0	2	8	38	24	22	16	11	23	0
Motor Vehicle Accidents (V02-V04, (V09.0,V09.2,V12-V14, V19.0-V19.2, V19.4-V19.6,V20-V79, V80.3-V80.5, V81.0-V81.1, V82.0-V82.1, V83-V86, V87.0-V87.8, V88.0-V88.8,V89.0,V89.2)	37	0	0	0	0	1	4	8	7	1	5	5	6	0
Nontransport Accidents (W00-X59, Y86)	106	1	0	0	0	1	3	30	17	20	11	6	17	0
Diabetes mellitus (E10-E14)	60	0	0	0	0	0	0	0	1	3	7	17	32	0
Influenza and pneumonia (J10-J18)	32	0	0	0	0	0	0	0	0	1	3	3	25	0
Alzheimer's disease (G30)	87	0	0	0	0	0	0	0	0	0	1	8	78	0
Nephritis, nephrotic syndrome, and nephrosis (N00-N07, N17-N19, N25-N27)	51	0	0	0	0	0	0	0	1	0	4	8	38	0
Septicemia (A40-A41)	35	0	0	0	0	0	0	0	2	3	2	10	18	0
Intentional self-harm (suicide) (X60-X84, Y87.0)	34	0	0	0	0	1	2	2	1	5	12	7	4	0
Chronic liver disease and cirrhosis (K70, K73-K74)	38	0	0	0	0	0	0	1	3	2	11	14	7	0
Essential hypertension and hypertensive renal disease (I10, I12)	15	0	0	0	0	0	0	0	0	0	0	1	14	0
Aortic aneurysm and dissection (I71)	11	0	0	0	0	0	0	0	0	2	0	2	7	0
Assault (homicide) (X85-Y09, Y87.1)	7	0	0	0	0	0	1	2	1	1	1	0	1	0
Human immunodeficiency virus (HIV) (B20-B24)	5	0	0	0	0	0	2	1	0	2	0	0	0	0
Certain conditions originating in the perinatal period (P00-P96)	4	4	0	0	0	0	0	0	0	0	0	0	0	0
Congenital malformations, deformations, and chromosomal abnormalities (Q00-Q99)	8	3	2	1	0	0	0	0	0	0	1	1	0	0
All other causes	477	2	0	3	0	1	1	3	8	14	50	86	309	0
TOTAL	2580	11	3	4	0	5	15	54	65	111	288	571	1453	0

Note:*ICD Codes, Tenth Revision.

Source: Delaware Department of Health and Social Services, Division of Public Health, Delaware Health Statistics Center

TABLE F-17. NUMBER OF DEATHS BY AGE FOR SELECTED LEADING CAUSES OF DEATH, DELAWARE, 2016

ALL RACES, MALES

Cause of Death*	Age of Decedent													
	Total	< 1	1-4	5-9	10-14	15-19	20-24	25-34	35-44	45-54	55-64	65-74	75+	Unk
Diseases of the heart (I00-I09, I11, I13, I20-I51)	1080	1	0	0	0	0	1	6	29	70	150	246	577	0
Acute rheumatic fever and chronic rheumatic heart disease (I00-I09)	3	0	0	0	0	0	0	0	0	2	1	0	0	0
Hypertensive heart disease (I11)	60	0	0	0	0	0	0	1	7	10	17	14	11	0
Hypertensive heart and renal disease (I13)	8	0	0	0	0	0	0	0	0	1	0	2	5	0
Ischemic heart disease (I20-I25)	717	0	0	0	0	0	0	1	16	39	105	164	392	0
All other forms of heart disease (I26-I51)	292	1	0	0	0	0	1	4	6	18	27	66	169	0
Malignant neoplasms (C00-C97)	1152	0	1	1	2	2	3	5	17	54	214	351	502	0
Malignant neoplasms of lip, oral cavity and pharynx (C00-C14)	21	0	0	0	0	0	0	0	0	1	8	6	6	0
Malignant neoplasms of digestive organs (C15-C26)	344	0	0	0	0	0	0	2	6	25	93	93	125	0
Malignant neoplasms of respiratory and intrathoracic organs (C30-C39)	309	0	0	0	0	0	0	0	5	11	52	113	128	0
Malignant neoplasms of breast (C50)	2	0	0	0	0	0	0	0	0	0	1	1	0	0
Malignant neoplasms of male genital organs, (C60-C63)	102	0	0	0	0	0	0	1	0	1	8	32	60	0
Malignant neoplasms of urinary tract (C64-C68)	95	0	0	0	0	0	0	0	0	1	11	28	55	0
Malignant neoplasms of meninges, brain, and other parts of central nervous system (C70-C72)	38	0	1	1	1	1	1	0	1	4	11	8	9	0
Malignant neoplasms of lymphoid, hematopoietic, and related tissues (C81-C96)	139	0	0	0	0	1	2	2	2	6	18	39	69	0
All other and unspecified malignant neoplasms (C40-C49, C69, C73-C80, C97)	102	0	0	0	1	0	0	0	3	5	12	31	50	0
Cerebrovascular diseases (I60-I69)	214	1	0	0	0	0	0	0	2	8	19	39	145	0

See footnote at the end of the table

TABLE F-17. NUMBER OF DEATHS BY AGE FOR SELECTED LEADING CAUSES OF DEATH, DELAWARE, 2016
ALL RACES, MALES - CONTINUED

	Age of Decedent													
	Total	< 1	1-4	5-9	10-14	15-19	20-24	25-34	35-44	45-54	55-64	65-74	75+	Unk
Chronic lower respiratory diseases (J40-J47)	222	0	1	0	0	0	0	0	1	5	26	74	115	0
Accidents (unintentional injuries) (V01-X59, Y85-Y86)	363	1	0	1	1	7	26	84	60	72	45	31	35	0
Motor Vehicle Accidents (V02-V04, (V09.0,V09.2,V12-V14, V19.0-V19.2, V19.4-V19.6,V20-V79, V80.3-V80.5, V81.0-V81.1, V82.0-V82.1, V83-V86, V87.0-V87.8, V88.0-V88.8,V89.0,V89.2)	89	0	0	1	1	4	12	16	14	14	13	9	5	0
Nontransport Accidents (W00-X59, Y86)	271	1	0	0	0	3	14	67	46	58	31	22	29	0
Diabetes mellitus (E10-E14)	111	0	0	0	0	2	0	0	5	10	26	26	42	0
Influenza and pneumonia (J10-J18)	67	0	0	0	0	0	0	0	1	4	9	15	38	0
Alzheimer's disease (G30)	119	0	0	0	0	0	0	0	0	0	3	14	102	0
Nephritis, nephrotic syndrome, and nephrosis (N00-N07, N17-N19, N25-N27)	108	0	0	0	0	0	0	0	1	4	17	18	68	0
Septicemia (A40-A41)	75	1	0	0	0	1	0	0	4	7	13	17	32	0
Intentional self-harm (suicide) (X60-X84, Y87.0)	98	0	0	0	1	3	8	11	11	21	18	13	12	0
Chronic liver disease and cirrhosis (K70, K73-K74)	46	0	0	0	0	0	0	0	1	9	12	17	7	0
Essential hypertension and hypertensive renal disease (I10, I12)	27	0	0	0	0	0	0	0	0	2	4	3	18	0
Aortic aneurysm and dissection (I71)	21	0	0	0	0	0	0	0	0	3	3	7	8	0
Assault (homicide) (X85-Y09, Y87.1)	52	0	1	0	0	8	8	20	7	6	0	1	1	0
Human immunodeficiency virus (HIV) (B20-B24)	10	0	0	0	0	0	1	3	0	3	3	0	0	0
Certain conditions originating in the perinatal period (P00-P96)	30	30	0	0	0	0	0	0	0	0	0	0	0	0
Congenital malformations, deformations, and chromosomal abnormalities (Q00-Q99)	13	4	1	1	1	0	0	0	1	0	2	2	1	0
All other causes	789	9	1	2	0	3	1	9	16	55	106	146	441	0
TOTAL	4597	47	5	5	5	26	48	138	156	333	670	1020	2144	0

Note: *ICD Codes, Tenth Revision.

Source: Delaware Department of Health and Social Services, Division of Public Health, Delaware Health Statistics Center

TABLE F-18. NUMBER OF DEATHS BY AGE FOR SELECTED LEADING CAUSES OF DEATH, DELAWARE, 2016
ALL RACES, FEMALES

Cause of Death*	Age of Decedent													
	Total	< 1	1-4	5-9	10-14	15-19	20-24	25-34	35-44	45-54	55-64	65-74	75+	Unk
Diseases of the heart (I00-I09, I11, I13, I20-I51)	875	1	0	0	0	1	0	3	6	28	71	121	644	0
Acute rheumatic fever and chronic rheumatic heart disease (I00-I09)	7	0	0	0	0	0	0	0	0	0	0	0	7	0
Hypertensive heart disease (I11)	46	0	0	0	0	0	0	1	1	7	9	12	16	0
Hypertensive heart and renal disease (I13)	10	0	0	0	0	0	0	0	0	0	1	1	8	0
Ischemic heart disease (I20-I25)	495	0	0	0	0	0	0	0	2	12	39	71	371	0
All other forms of heart disease (I26-I51)	317	1	0	0	0	1	0	2	3	9	22	37	242	0
Malignant neoplasms (C00-C97)	973	0	0	0	1	0	0	11	16	68	182	259	436	0
Malignant neoplasms of lip, oral cavity and pharynx (C00-C14)	9	0	0	0	0	0	0	0	0	0	6	1	2	0
Malignant neoplasms of digestive organs (C15-C26)	206	0	0	0	0	0	0	1	2	15	30	48	110	0
Malignant neoplasms of respiratory and intrathoracic organs (C30-C39)	269	0	0	0	0	0	0	1	0	19	60	88	101	0
Malignant neoplasms of breast (C50)	142	0	0	0	0	0	0	1	3	17	33	31	57	0
Malignant neoplasms of female genital organs, (C51-C58)	97	0	0	0	0	0	0	1	4	5	23	24	40	0
Malignant neoplasms of urinary tract (C64-C68)	41	0	0	0	0	0	0	0	1	1	1	13	25	0
Malignant neoplasms of meninges, brain, and other parts of central nervous system (C70-C72)	29	0	0	0	0	0	0	2	1	1	5	10	10	0
Malignant neoplasms of lymphoid, hematopoietic, and related tissues (C81-C96)	82	0	0	0	0	0	0	2	2	5	8	22	43	0
All other and unspecified malignant neoplasms (C40-C49, C69, C73-C80, C97)	98	0	0	0	1	0	0	3	3	5	16	22	48	0
Cerebrovascular diseases (I60-I69)	289	0	0	0	0	0	0	1	2	7	19	37	223	0

See footnote at the end of the table

TABLE F-18. NUMBER OF DEATHS BY AGE FOR SELECTED LEADING CAUSES OF DEATH, DELAWARE, 2016
ALL RACES, FEMALES - CONTINUED

	Age of Decedent													
	Total	< 1	1-4	5-9	10-14	15-19	20-24	25-34	35-44	45-54	55-64	65-74	75+	Unk
Chronic lower respiratory diseases (J40-J47)	318	0	0	0	1	0	0	0	2	4	29	80	202	0
Accidents (unintentional injuries) (V01-X59, Y85-Y86)	171	1	1	0	0	1	10	28	16	30	32	9	43	0
Motor Vehicle Accidents (V02-V04, V09.0,V09.2,V12-V14, V19.0-V19.2, V19.4-V19.6,V20-V79, V80.3-V80.5, V81.0-V81.1, V82.0-V82.1, V83-V86, V87.0-V87.8, V88.0-V88.8,V89.0,V89.2)	29	0	0	0	0	0	4	4	3	3	6	4	5	0
Nontransport Accidents (W00-X59, Y86)	140	1	1	0	0	1	5	24	13	26	26	5	38	0
Diabetes mellitus (E10-E14)	92	0	0	0	0	0	0	1	5	5	9	26	46	0
Influenza and pneumonia (J10-J18)	66	0	0	0	0	0	0	0	1	2	9	11	43	0
Alzheimer's disease (G30)	210	0	0	0	0	0	0	0	0	0	3	13	194	0
Nephritis, nephrotic syndrome, and nephrosis (N00-N07, N17-N19, N25-N27)	100	0	0	0	0	0	1	0	2	3	16	16	62	0
Septicemia (A40-A41)	68	1	0	0	0	0	1	0	1	2	7	16	40	0
Intentional self-harm (suicide) (X60-X84, Y87.0)	21	0	0	0	0	1	0	6	1	4	9	0	0	0
Chronic liver disease and cirrhosis (K70, K73-K74)	46	0	0	0	0	0	0	2	2	8	13	12	9	0
Essential hypertension and hypertensive renal disease (I10, I12)	31	0	0	0	0	0	0	0	2	3	2	2	22	0
Aortic aneurysm and dissection (I71)	13	0	0	0	0	0	0	0	0	1	0	1	11	0
Assault (homicide) (X85-Y09, Y87.1)	12	0	0	0	0	2	2	4	0	2	2	0	0	0
Human immunodeficiency virus (HIV) (B20-B24)	7	0	0	0	0	0	1	0	1	3	1	1	0	0
Certain conditions originating in the perinatal period (P00-P96)	25	25	0	0	0	0	0	0	0	0	0	0	0	0
Congenital malformations, deformations, and chromosomal abnormalities (Q00-Q99)	10	5	1	0	1	0	0	0	1	0	1	0	1	0
All Other Causes	948	7	0	3	1	0	1	9	13	34	69	139	672	0
TOTAL	4275	40	2	3	4	5	16	65	71	204	474	743	2648	0

Note: *ICD Codes, Tenth Revision.

Source: Delaware Department of Health and Social Services, Division of Public Health, Delaware Health Statistics Center

TABLE F-19. NUMBER OF DEATHS BY AGE FOR SELECTED LEADING CAUSES OF DEATH, DELAWARE, 2016

WHITE, BOTH SEXES

Cause of Death*	Age of Decedent													
	Total	< 1	1-4	5-9	10-14	15-19	20-24	25-34	35-44	45-54	55-64	65-74	75+	Unk
Diseases of the heart (I00-I09, I11, I13, I20-I51)	1591	2	0	0	0	0	1	5	19	59	168	277	1060	0
Acute rheumatic fever and chronic rheumatic heart disease (I00-I09)	9	0	0	0	0	0	0	0	0	1	1	0	7	0
Hypertensive heart disease (I11)	75	0	0	0	0	0	0	2	3	10	23	15	22	0
Hypertensive heart and renal disease (I13)	9	0	0	0	0	0	0	0	0	1	0	2	6	0
Ischemic heart disease (I20-I25)	998	0	0	0	0	0	0	1	11	34	110	181	661	0
All other forms of heart disease (I26-I51)	500	2	0	0	0	0	1	2	5	13	34	79	364	0
Malignant neoplasms (C00-C97)	1742	0	1	1	1	2	3	15	22	88	309	496	804	0
Malignant neoplasms of lip, oral cavity and pharynx (C00-C14)	22	0	0	0	0	0	0	0	0	0	12	5	5	0
Malignant neoplasms of digestive organs (C15-C26)	439	0	0	0	0	0	0	2	7	25	86	115	204	0
Malignant neoplasms of respiratory and intrathoracic organs (C30-C39)	483	0	0	0	0	0	0	1	4	24	95	169	190	0
Malignant neoplasms of breast (C50)	117	0	0	0	0	0	0	1	1	14	30	22	49	0
Malignant neoplasms of female genital organs, (C51-C58)	75	0	0	0	0	0	0	1	2	5	15	20	32	0
Malignant neoplasms of male genital organs, (C60-C63)	72	0	0	0	0	0	0	1	0	1	5	20	45	0
Malignant neoplasms of urinary tract (C64-C68)	118	0	0	0	0	0	0	0	1	1	8	34	74	0
Malignant neoplasms of meninges, brain, and other parts of central nervous system (C70-C72)	61	0	1	1	0	1	1	2	2	3	15	16	19	0
Malignant neoplasms of lymphoid, hematopoietic, and related tissues (C81-C96)	182	0	0	0	0	1	2	4	0	8	18	48	101	0
All other and unspecified malignant neoplasms (C40-C49, C69, C73-C80, C97)	173	0	0	0	1	0	0	3	5	7	25	47	85	0
Cerebrovascular diseases (I60-I69)	387	1	0	0	0	0	0	1	2	10	20	48	305	0

See footnote at the end of the table

TABLE F-19. NUMBER OF DEATHS BY AGE FOR SELECTED LEADING CAUSES OF DEATH, DELAWARE, 2016

WHITE, BOTH SEXES - CONTINUED

	Age of Decedent													
	Total	< 1	1-4	5-9	10-14	15-19	20-24	25-34	35-44	45-54	55-64	65-74	75+	Unk
Chronic lower respiratory diseases (J40-J47)	470	0	0	0	1	0	0	0	3	7	46	138	275	0
Accidents (unintentional injuries) (V01-X59, Y85-Y86)	437	0	0	1	1	6	28	99	58	82	57	31	74	0
Motor Vehicle Accidents (V02-V04, V09.0, V09.2, V12-V14, V19.0-V19.2, V19.4-V19.6, V20-V79, V80.3-V80.5, V81.0-V81.1, V82.0-V82.1, V83-V86, V87.0-V87.8, V88.0-V88.8, V89.0, V89.2)	83	0	0	1	1	2	11	17	9	14	12	8	8	0
Nontransport Accidents (W00-X59, Y86)	351	0	0	0	0	4	17	81	49	67	45	23	65	0
Diabetes mellitus (E10-E14)	148	0	0	0	0	2	0	0	3	11	25	36	71	0
Influenza and pneumonia (J10-J18)	113	0	0	0	0	0	0	0	2	4	15	21	71	0
Alzheimer's disease (G30)	271	0	0	0	0	0	0	0	0	0	4	20	247	0
Nephritis, nephrotic syndrome, and nephrosis (N00-N07, N17-N19, N25-N27)	156	0	0	0	0	0	0	0	3	4	21	25	103	0
Septicemia (A40-A41)	115	1	0	0	0	0	0	0	4	8	14	26	62	0
Intentional self-harm (suicide) (X60-X84, Y87.0)	106	0	0	0	1	4	5	12	9	23	27	13	12	0
Chronic liver disease and cirrhosis (K70, K73-K74)	79	0	0	0	0	0	0	2	2	14	22	26	13	0
Essential hypertension and hypertensive renal disease (I10, I12)	39	0	0	0	0	0	0	0	1	3	3	0	32	0
Aortic aneurysm and dissection (I71)	25	0	0	0	0	0	0	0	0	2	2	5	16	0
Assault (homicide) (X85-Y09, Y87.1)	16	0	1	0	0	1	3	3	4	1	2	1	0	0
Human immunodeficiency virus (HIV) (B20-B24)	4	0	0	0	0	0	0	1	1	1	1	0	0	0
Certain conditions originating in the perinatal period (P00-P96)	19	19	0	0	0	0	0	0	0	0	0	0	0	0
Congenital malformations, deformations, and chromosomal abnormalities (Q00-Q99)	16	6	1	1	0	0	0	0	1	0	3	2	2	0
All other causes	1439	7	0	1	0	1	2	6	21	62	136	231	972	0
TOTAL	7173	36	3	4	4	16	42	144	155	379	875	1396	4119	0

Note: *ICD Codes, Tenth Revision.

Source: Delaware Department of Health and Social Services, Division of Public Health, Delaware Health Statistics Center

TABLE F-20. NUMBER OF DEATHS BY AGE FOR SELECTED LEADING CAUSES OF DEATH, DELAWARE, 2016

WHITE MALES

Cause of Death*	Age of Decedent													
	Total	< 1	1-4	5-9	10-14	15-19	20-24	25-34	35-44	45-54	55-64	65-74	75+	Unk
Diseases of the heart (I00-I09, I11, I13, I20-I51)	870	1	0	0	0	0	1	3	17	44	114	185	505	0
Acute rheumatic fever and chronic rheumatic heart disease (I00-I09)	2	0	0	0	0	0	0	0	0	1	1	0	0	0
Hypertensive heart disease (I11)	44	0	0	0	0	0	0	1	3	6	15	8	11	0
Hypertensive heart and renal disease (I13)	4	0	0	0	0	0	0	0	0	1	0	1	2	0
Ischemic heart disease (I20-I25)	584	0	0	0	0	0	0	1	11	27	81	125	339	0
All other forms of heart disease (I26-I51)	236	1	0	0	0	0	1	1	3	9	17	51	153	0
Malignant neoplasms (C00-C97)	951	0	1	1	1	2	3	4	13	36	166	287	437	0
Malignant neoplasms of lip, oral cavity and pharynx (C00-C14)	13	0	0	0	0	0	0	0	0	0	6	4	3	0
Malignant neoplasms of digestive organs (C15-C26)	276	0	0	0	0	0	0	1	5	15	63	77	115	0
Malignant neoplasms of respiratory and intrathoracic organs (C30-C39)	261	0	0	0	0	0	0	0	4	8	47	92	110	0
Malignant neoplasms of breast (C50)	2	0	0	0	0	0	0	0	0	0	1	1	0	0
Malignant neoplasms of male genital organs, (C60-C63)	72	0	0	0	0	0	0	1	0	1	5	20	45	0
Malignant neoplasms of urinary tract (C64-C68)	83	0	0	0	0	0	0	0	0	1	8	24	50	0
Malignant neoplasms of meninges, brain, and other parts of central nervous system (C70-C72)	34	0	1	1	0	1	1	0	1	3	10	7	9	0
Malignant neoplasms of lymphoid, hematopoietic, and related tissues (C81-C96)	119	0	0	0	0	1	2	2	0	4	15	33	62	0
All other and unspecified malignant neoplasms (C40-C49, C69, C73-C80,C97)	91	0	0	0	1	0	0	0	3	4	11	29	43	0
Cerebrovascular diseases (I60-I69)	157	1	0	0	0	0	0	0	1	4	9	26	116	0

See footnotes at the end of the table

TABLE F-20. NUMBER OF DEATHS BY AGE FOR SELECTED LEADING CAUSES OF DEATH, DELAWARE, 2016
WHITE MALES - CONTINUED

	Age of Decedent													
	Total	< 1	1-4	5-9	10-14	15-19	20-24	25-34	35-44	45-54	55-64	65-74	75+	Unk
Chronic lower respiratory diseases (J40-J47)	189	0	0	0	0	0	0	0	1	4	22	61	101	0
Accidents (unintentional injuries) (V01-X59, Y85-Y86)	293	0	0	1	1	5	20	75	43	58	33	23	34	0
Motor Vehicle Accidents (V02-V04, (V09.0,V09.2,V12-V14, V19.0-V19.2, V19.4-V19.6,V20-V79, V80.3-V80.5, V81.0-V81.1, V82.0-V82.1, V83-V86, V87.0-V87.8, V88.0-V88.8,V89.0,V89.2)	62	0	0	1	1	2	7	14	7	12	9	5	4	0
Nontransport Accidents (W00-X59, Y86)	229	0	0	0	0	3	13	60	36	46	24	18	29	0
Diabetes mellitus (E10-E14)	81	0	0	0	0	2	0	0	0	6	20	19	34	0
Influenza and pneumonia (J10-J18)	55	0	0	0	0	0	0	0	1	3	7	12	32	0
Alzheimer's disease (G30)	100	0	0	0	0	0	0	0	0	0	2	9	89	0
Nephritis, nephrotic syndrome, and nephrosis (N00-N07, N17-N19, N25-N27)	80	0	0	0	0	0	0	0	1	1	11	13	54	0
Septicemia (A40-A41)	60	1	0	0	0	0	0	0	3	6	10	12	28	0
Intentional self-harm (suicide) (X60-X84, Y87.0)	87	0	0	0	1	3	5	8	8	19	18	13	12	0
Chronic liver disease and cirrhosis (K70, K73-K74)	42	0	0	0	0	0	0	0	1	8	11	16	6	0
Essential hypertension and hypertensive renal disease (I10, I12)	18	0	0	0	0	0	0	0	0	1	2	0	15	0
Aortic aneurysm and dissection (I71)	16	0	0	0	0	0	0	0	0	1	2	5	8	0
Assault (homicide) (X85-Y09, Y87.1)	13	0	1	0	0	1	3	2	4	1	0	1	0	0
Human immunodeficiency virus (HIV) (B20-B24)	3	0	0	0	0	0	0	1	0	1	1	0	0	0
Certain conditions originating in the perinatal period (P00-P96)	12	12	0	0	0	0	0	0	0	0	0	0	0	0
Congenital malformations, deformations, and chromosomal abnormalities (Q00-Q99)	9	3	0	1	0	0	0	0	0	0	2	2	1	0
All other causes	659	3	0	1	0	1	1	3	12	41	83	125	389	0
TOTAL	3695	21	2	4	3	14	33	96	105	234	513	809	1861	0

Note:*ICD Codes, Tenth Revision.

Source: Delaware Department of Health and Social Services, Division of Public Health, Delaware Health Statistics Center

TABLE F-21. NUMBER OF DEATHS BY AGE FOR SELECTED LEADING CAUSES OF DEATH, DELAWARE, 2016

WHITE FEMALES

Cause of Death*	Age of Decedent													Unk
	Total	< 1	1-4	5-9	10-14	15-19	20-24	25-34	35-44	45-54	55-64	65-74	75+	
Diseases of the heart (I00-I09, I11, I13, I20-I51)	721	1	0	0	0	0	0	2	2	15	54	92	555	0
Acute rheumatic fever and chronic rheumatic heart disease (I00-I09)	7	0	0	0	0	0	0	0	0	0	0	0	7	0
Hypertensive heart disease (I11)	31	0	0	0	0	0	0	1	0	4	8	7	11	0
Hypertensive heart and renal disease (I13)	5	0	0	0	0	0	0	0	0	0	0	1	4	0
Ischemic heart disease (I20-I25)	414	0	0	0	0	0	0	0	0	7	29	56	322	0
All other forms of heart disease (I26-I51)	264	1	0	0	0	0	0	1	2	4	17	28	211	0
Malignant neoplasms (C00-C97)	791	0	0	0	0	0	0	11	9	52	143	209	367	0
Malignant neoplasms of lip, oral cavity and pharynx (C00-C14)	9	0	0	0	0	0	0	0	0	0	6	1	2	0
Malignant neoplasms of digestive organs (C15-C26)	163	0	0	0	0	0	0	1	2	10	23	38	89	0
Malignant neoplasms of respiratory and intrathoracic organs (C30-C39)	222	0	0	0	0	0	0	1	0	16	48	77	80	0
Malignant neoplasms of breast (C50)	115	0	0	0	0	0	0	1	1	14	29	21	49	0
Malignant neoplasms of female genital organs, (C51-C58)	75	0	0	0	0	0	0	1	2	5	15	20	32	0
Malignant neoplasms of urinary tract (C64-C68)	35	0	0	0	0	0	0	0	1	0	0	10	24	0
Malignant neoplasms of meninges, brain, and other parts of central nervous system (C70-C72)	27	0	0	0	0	0	0	2	1	0	5	9	10	0
Malignant neoplasms of lymphoid, hematopoietic, and related tissues (C81-C96)	63	0	0	0	0	0	0	2	0	4	3	15	39	0
All other and unspecified malignant neoplasms (C40-C49, C69, C73-C80, C97)	82	0	0	0	0	0	0	3	2	3	14	18	42	0
Cerebrovascular diseases (I60-I69)	230	0	0	0	0	0	0	1	1	6	11	22	189	0

See footnotes at the end of the table

TABLE F-21. NUMBER OF DEATHS BY AGE FOR SELECTED LEADING CAUSES OF DEATH, DELAWARE, 2016

WHITE FEMALES - CONTINUED

	Age of Decedent													Unk
	Total	< 1	1-4	5-9	10-14	15-19	20-24	25-34	35-44	45-54	55-64	65-74	75+	
Chronic lower respiratory diseases (J40-J47)	281	0	0	0	1	0	0	0	2	3	24	77	174	0
Accidents (unintentional injuries) (V01-X59, Y85-Y86)	144	0	0	0	0	1	8	24	15	24	24	8	40	0
Motor Vehicle Accidents (V02-V04, (V09.0,V09.2,V12-V14, V19.0-V19.2, V19.4-V19.6,V20-V79, V80.3-V80.5, V81.0-V81.1, V82.0-V82.1, V83-V86, V87.0-V87.8, V88.0-V88.8,V89.0,V89.2)	21	0	0	0	0	0	4	3	2	2	3	3	4	0
Nontransport Accidents (W00-X59, Y86)	122	0	0	0	0	1	4	21	13	21	21	5	36	0
Diabetes mellitus (E10-E14)	67	0	0	0	0	0	0	0	3	5	5	17	37	0
Influenza and pneumonia (J10-J18)	58	0	0	0	0	0	0	0	1	1	8	9	39	0
Alzheimer's disease (G30)	171	0	0	0	0	0	0	0	0	0	2	11	158	0
Nephritis, nephrotic syndrome, and nephrosis (N00-N07, N17-N19, N25-N27)	76	0	0	0	0	0	0	0	2	3	10	12	49	0
Septicemia (A40-A41)	55	0	0	0	0	0	0	0	1	2	4	14	34	0
Intentional self-harm (suicide) (X60-X84, Y87.0)	19	0	0	0	0	1	0	4	1	4	9	0	0	0
Chronic liver disease and cirrhosis (K70, K73-K74)	37	0	0	0	0	0	0	2	1	6	11	10	7	0
Essential hypertension and hypertensive renal disease (I10, I12)	21	0	0	0	0	0	0	0	1	2	1	0	17	0
Aortic aneurysm and dissection (I71)	9	0	0	0	0	0	0	0	0	1	0	0	8	0
Assault (homicide) (X85-Y09, Y87.1)	3	0	0	0	0	0	0	1	0	0	2	0	0	0
Human immunodeficiency virus (HIV) (B20-B24)	1	0	0	0	0	0	0	0	1	0	0	0	0	0
Certain conditions originating in the perinatal period (P00-P96)	7	7	0	0	0	0	0	0	0	0	0	0	0	0
Congenital malformations, deformations, and chromosomal abnormalities (Q00-Q99)	7	3	1	0	0	0	0	0	1	0	1	0	1	0
All other causes	780	4	0	0	0	0	1	3	9	21	53	106	583	0
TOTAL	3478	15	1	0	1	2	9	48	50	145	362	587	2258	0

Note: *ICD Codes, Tenth Revision.

Source: Delaware Department of Health and Social Services, Division of Public Health, Delaware Health Statistics Center

**TABLE F-22. NUMBER OF DEATHS BY AGE FOR SELECTED LEADING CAUSES OF DEATH, DELAWARE, 2016
BLACK, BOTH SEXES**

Cause of Death*	Age of Decedent													
	Total	< 1	1-4	5-9	10-14	15-19	20-24	25-34	35-44	45-54	55-64	65-74	75+	Unk
Diseases of the heart (I00-I09, I11, I13, I20-I51)	331	0	0	0	0	1	0	3	16	39	51	82	139	0
Acute rheumatic fever and chronic rheumatic heart disease (I00-I09)	1	0	0	0	0	0	0	0	0	1	0	0	0	0
Hypertensive heart disease (I11)	29	0	0	0	0	0	0	0	5	7	3	11	3	0
Hypertensive heart and renal disease (I13)	9	0	0	0	0	0	0	0	0	0	1	1	7	0
Ischemic heart disease (I20-I25)	190	0	0	0	0	0	0	0	7	17	32	48	86	0
All other forms of heart disease (I26-I51)	102	0	0	0	0	1	0	3	4	14	15	22	43	0
Malignant neoplasms (C00-C97)	343	0	0	0	2	0	0	1	10	29	79	101	121	0
Malignant neoplasms of lip, oral cavity and pharynx (C00-C14)	5	0	0	0	0	0	0	0	0	0	1	2	2	0
Malignant neoplasms of digestive organs (C15-C26)	95	0	0	0	0	0	0	1	1	13	31	21	28	0
Malignant neoplasms of respiratory and intrathoracic organs (C30-C39)	89	0	0	0	0	0	0	0	1	5	17	32	34	0
Malignant neoplasms of breast (C50)	27	0	0	0	0	0	0	0	2	3	4	10	8	0
Malignant neoplasms of female genital organs, (C51-C58)	20	0	0	0	0	0	0	0	1	0	8	4	7	0
Malignant neoplasms of male genital organs, (C60-C63)	29	0	0	0	0	0	0	0	0	0	3	11	15	0
Malignant neoplasms of urinary tract (C64-C68)	18	0	0	0	0	0	0	0	0	1	4	7	6	0
Malignant neoplasms of meninges, brain, and other parts of central nervous system (C70-C72)	5	0	0	0	1	0	0	0	0	2	1	1	0	0
Malignant neoplasms of lymphoid, hematopoietic, and related tissues (C81-C96)	31	0	0	0	0	0	0	0	4	3	8	7	9	0
All other and unspecified malignant neoplasms (C40-C49, C69, C73-C80, C97)	24	0	0	0	1	0	0	0	1	2	2	6	12	0
Cerebrovascular diseases (I60-I69)	101	0	0	0	0	0	0	0	2	5	17	22	55	0

See footnotes at the end of the table

**TABLE F-22. NUMBER OF DEATHS BY AGE FOR SELECTED LEADING CAUSES OF DEATH, DELAWARE, 2016
BLACK, BOTH SEXES - CONTINUED**

	Age of Decedent													
	Total	< 1	1-4	5-9	10-14	15-19	20-24	25-34	35-44	45-54	55-64	65-74	75+	Unk
Chronic lower respiratory diseases (J40-J47)	65	0	1	0	0	0	0	0	0	2	9	13	40	0
Accidents (unintentional injuries) (V01-X59, Y85-Y86)	90	2	1	0	0	2	7	12	17	19	17	9	4	0
Motor Vehicle Accidents (V02-V04, (V09.0,V09.2,V12-V14, V19.0-V19.2, V19.4-V19.6,V20-V79, V80.3-V80.5, V81.0-V81.1, V82.0-V82.1, V83-V86, V87.0-V87.8, V88.0-V88.8,V89.0,V89.2)	32	0	0	0	0	2	4	3	7	3	6	5	2	0
Nontransport Accidents (W00-X59, Y86)	56	2	1	0	0	0	2	9	10	16	10	4	2	0
Diabetes mellitus (E10-E14)	51	0	0	0	0	0	0	1	7	4	10	14	15	0
Influenza and pneumonia (J10-J18)	15	0	0	0	0	0	0	0	0	2	1	4	8	0
Alzheimer's disease (G30)	51	0	0	0	0	0	0	0	0	0	1	7	43	0
Nephritis, nephrotic syndrome, and nephrosis (N00-N07, N17-N19, N25-N27)	48	0	0	0	0	0	1	0	0	3	12	7	25	0
Septicemia (A40-A41)	25	1	0	0	0	0	1	0	1	1	6	6	9	0
Intentional self-harm (suicide) (X60-X84, Y87.0)	12	0	0	0	0	0	3	4	3	2	0	0	0	0
Chronic liver disease and cirrhosis (K70, K73-K74)	8	0	0	0	0	0	0	0	0	2	2	2	2	0
Essential hypertension and hypertensive renal disease (I10, I12)	18	0	0	0	0	0	0	0	1	2	3	5	7	0
Aortic aneurysm and dissection (I71)	9	0	0	0	0	0	0	0	0	2	1	3	3	0
Assault (homicide) (X85-Y09, Y87.1)	44	0	0	0	0	8	6	20	2	7	0	0	1	0
Human immunodeficiency virus (HIV) (B20-B24)	13	0	0	0	0	0	2	2	0	5	3	1	0	0
Certain conditions originating in the perinatal period (P00-P96)	27	27	0	0	0	0	0	0	0	0	0	0	0	0
Congenital malformations, deformations, and chromosomal abnormalities (Q00-Q99)	7	3	1	0	2	0	0	0	1	0	0	0	0	0
All other causes	263	7	1	3	1	2	0	10	8	24	34	49	124	0
TOTAL	1521	40	4	3	5	13	20	53	68	148	246	325	596	0

Note: *ICD Codes, Tenth Revision.

Source: Delaware Department of Health and Social Services, Division of Public Health, Delaware Health Statistics Center

TABLE F-23. NUMBER OF DEATHS BY AGE FOR SELECTED LEADING CAUSES OF DEATH, DELAWARE, 2016
BLACK MALES

Cause of Death*	Age of Decedent													
	Total	< 1	1-4	5-9	10-14	15-19	20-24	25-34	35-44	45-54	55-64	65-74	75+	Unk
Diseases of the heart (I00-I09, I11, I13, I20-I51)	193	0	0	0	0	0	0	2	12	26	34	56	63	0
Acute rheumatic fever and chronic rheumatic heart disease (I00-I09)	1	0	0	0	0	0	0	0	0	1	0	0	0	0
Hypertensive heart disease (I11)	16	0	0	0	0	0	0	0	4	4	2	6	0	0
Hypertensive heart and renal disease (I13)	4	0	0	0	0	0	0	0	0	0	0	1	3	0
Ischemic heart disease (I20-I25)	120	0	0	0	0	0	0	0	5	12	22	35	46	0
All other forms of heart disease (I26-I51)	52	0	0	0	0	0	0	2	3	9	10	14	14	0
Malignant neoplasms (C00-C97)	176	0	0	0	1	0	0	1	4	15	42	56	57	0
Malignant neoplasms of lip, oral cavity and pharynx (C00-C14)	5	0	0	0	0	0	0	0	0	0	1	2	2	0
Malignant neoplasms of digestive organs (C15-C26)	58	0	0	0	0	0	0	1	1	9	25	13	9	0
Malignant neoplasms of respiratory and intrathoracic organs (C30-C39)	43	0	0	0	0	0	0	0	1	2	5	21	14	0
Malignant neoplasms of breast (C50)	0	0	0	0	0	0	0	0	0	0	0	0	0	0
Malignant neoplasms of male genital organs, (C60-C63)	29	0	0	0	0	0	0	0	0	0	3	11	15	0
Malignant neoplasms of urinary tract (C64-C68)	12	0	0	0	0	0	0	0	0	0	3	4	5	0
Malignant neoplasms of meninges, brain, and other parts of central nervous system (C70-C72)	3	0	0	0	1	0	0	0	0	1	1	0	0	0
Malignant neoplasms of lymphoid, hematopoietic, and related tissues (C81-C96)	16	0	0	0	0	0	0	0	2	2	3	3	6	0
All other and unspecified malignant neoplasms (C40-C49, C69, C73-C80,C97)	10	0	0	0	0	0	0	0	0	1	1	2	6	0
Cerebrovascular diseases (I60-I69)	50	0	0	0	0	0	0	0	1	4	9	10	26	0

See footnotes at the end of the table

TABLE F-23. NUMBER OF DEATHS BY AGE FOR SELECTED LEADING CAUSES OF DEATH, DELAWARE, 2016
BLACK MALES - CONTINUED

	Age of Decedent													
	Total	< 1	1-4	5-9	10-14	15-19	20-24	25-34	35-44	45-54	55-64	65-74	75+	Unk
Chronic lower respiratory diseases (J40-J47)	29	0	1	0	0	0	0	0	0	1	4	10	13	0
Accidents (unintentional injuries) (V01-X59, Y85-Y86)	65	1	0	0	0	2	5	8	16	13	11	8	1	0
Motor Vehicle Accidents (V02-V04, (V09.0,V09.2,V12-V14, V19.0-V19.2, V19.4-V19.6,V20-V79, V80.3-V80.5, V81.0-V81.1, V82.0-V82.1, V83-V86, V87.0-V87.8, V88.0-V88.8,V89.0,V89.2)	24	0	0	0	0	2	4	2	6	2	3	4	1	0
Nontransport Accidents (W00-X59, Y86)	40	1	0	0	0	0	1	6	10	11	7	4	0	0
Diabetes mellitus (E10-E14)	30	0	0	0	0	0	0	0	5	4	6	7	8	0
Influenza and pneumonia (J10-J18)	7	0	0	0	0	0	0	0	0	1	0	2	4	0
Alzheimer's disease (G30)	18	0	0	0	0	0	0	0	0	0	1	5	12	0
Nephritis, nephrotic syndrome, and nephrosis (N00-N07, N17-N19, N25-N27)	26	0	0	0	0	0	0	0	0	3	6	3	14	0
Septicemia (A40-A41)	14	0	0	0	0	0	0	0	1	1	3	5	4	0
Intentional self-harm (suicide) (X60-X84, Y87.0)	11	0	0	0	0	0	3	3	3	2	0	0	0	0
Chronic liver disease and cirrhosis (K70, K73-K74)	3	0	0	0	0	0	0	0	0	1	0	1	1	0
Essential hypertension and hypertensive renal disease (I10, I12)	9	0	0	0	0	0	0	0	0	1	2	3	3	0
Aortic aneurysm and dissection (I71)	5	0	0	0	0	0	0	0	0	2	1	2	0	0
Assault (homicide) (X85-Y09, Y87.1)	35	0	0	0	0	6	4	17	2	5	0	0	1	0
Human immunodeficiency virus (HIV) (B20-B24)	7	0	0	0	0	0	1	2	0	2	2	0	0	0
Certain conditions originating in the perinatal period (P00-P96)	14	14	0	0	0	0	0	0	0	0	0	0	0	0
Congenital malformations, deformations, and chromosomal abnormalities (Q00-Q99)	4	1	1	0	1	0	0	0	1	0	0	0	0	0
All other causes	117	5	1	1	0	2	0	5	4	11	21	20	47	0
TOTAL	813	21	3	1	2	10	13	38	49	92	142	188	254	0

Note: *ICD Codes, Tenth Revision.

Source: Delaware Department of Health and Social Services, Division of Public Health, Delaware Health Statistics Center

TABLE F-24. NUMBER OF DEATHS BY AGE FOR SELECTED LEADING CAUSES OF DEATH, DELAWARE, 2016

BLACK FEMALES

Cause of Death*	Age of Decedent													
	Total	< 1	1-4	5-9	10-14	15-19	20-24	25-34	35-44	45-54	55-64	65-74	75+	Unk
Diseases of the heart (I00-I09, I11, I13, I20-I51)	138	0	0	0	0	1	0	1	4	13	17	26	76	0
Acute rheumatic fever and chronic rheumatic heart disease (I00-I09)	0	0	0	0	0	0	0	0	0	0	0	0	0	0
Hypertensive heart disease (I11)	13	0	0	0	0	0	0	0	1	3	1	5	3	0
Hypertensive heart and renal disease (I13)	5	0	0	0	0	0	0	0	0	0	1	0	4	0
Ischemic heart disease (I20-I25)	70	0	0	0	0	0	0	0	2	5	10	13	40	0
All other forms of heart disease (I26-I51)	50	0	0	0	0	1	0	1	1	5	5	8	29	0
Malignant neoplasms (C00-C97)	167	0	0	0	1	0	0	0	6	14	37	45	64	0
Malignant neoplasms of lip, oral cavity and pharynx (C00-C14)	0	0	0	0	0	0	0	0	0	0	0	0	0	0
Malignant neoplasms of digestive organs (C15-C26)	37	0	0	0	0	0	0	0	0	4	6	8	19	0
Malignant neoplasms of respiratory and intrathoracic organs (C30-C39)	46	0	0	0	0	0	0	0	0	3	12	11	20	0
Malignant neoplasms of breast (C50)	27	0	0	0	0	0	0	0	2	3	4	10	8	0
Malignant neoplasms of female genital organs, (C51-C58)	20	0	0	0	0	0	0	0	1	0	8	4	7	0
Malignant neoplasms of urinary tract (C64-C68)	6	0	0	0	0	0	0	0	0	1	1	3	1	0
Malignant neoplasms of meninges, brain, and other parts of central nervous system (C70-C72)	2	0	0	0	0	0	0	0	0	1	0	1	0	0
Malignant neoplasms of lymphoid, hematopoietic, and related tissues (C81-C96)	15	0	0	0	0	0	0	0	2	1	5	4	3	0
All other and unspecified malignant neoplasms (C40-C49, C69, C73-C80, C97)	14	0	0	0	1	0	0	0	1	1	1	4	6	0
Cerebrovascular diseases (I60-I69)	51	0	0	0	0	0	0	0	1	1	8	12	29	0

TABLE F-24. NUMBER OF DEATHS BY AGE FOR SELECTED LEADING CAUSES OF DEATH, DELAWARE, 2016
BLACK FEMALES - CONTINUED

	Age of Decedent													Unk
	Total	< 1	1-4	5-9	10-14	15-19	20-24	25-34	35-44	45-54	55-64	65-74	75+	
Chronic lower respiratory diseases (J40-J47)	36	0	0	0	0	0	0	0	0	1	5	3	27	0
Accidents (unintentional injuries) (V01-X59, Y85-Y86)	25	1	1	0	0	0	2	4	1	6	6	1	3	0
Motor Vehicle Accidents (V02-V04, (V09.0,V09.2,V12-V14, V19.0-V19.2, V19.4-V19.6,V20-V79, V80.3-V80.5, V81.0-V81.1, V82.0-V82.1, V83-V86, V87.0-V87.8, V88.0-V88.8,V89.0,V89.2)	8	0	0	0	0	0	0	1	1	1	3	1	1	0
Nontransport Accidents (W00-X59, Y86)	16	1	1	0	0	0	1	3	0	5	3	0	2	0
Diabetes mellitus (E10-E14)	21	0	0	0	0	0	0	1	2	0	4	7	7	0
Influenza and pneumonia (J10-J18)	8	0	0	0	0	0	0	0	0	1	1	2	4	0
Alzheimer's disease (G30)	33	0	0	0	0	0	0	0	0	0	0	2	31	0
Nephritis, nephrotic syndrome, and nephrosis (N00-N07, N17-N19, N25-N27)	22	0	0	0	0	0	1	0	0	0	6	4	11	0
Septicemia (A40-A41)	11	1	0	0	0	0	1	0	0	0	3	1	5	0
Intentional self-harm (suicide) (X60-X84, Y87.0)	1	0	0	0	0	0	0	1	0	0	0	0	0	0
Chronic liver disease and cirrhosis (K70, K73-K74)	5	0	0	0	0	0	0	0	0	1	2	1	1	0
Essential hypertension and hypertensive renal disease (I10, I12)	9	0	0	0	0	0	0	0	1	1	1	2	4	0
Aortic aneurysm and dissection (I71)	4	0	0	0	0	0	0	0	0	0	0	1	3	0
Assault (homicide) (X85-Y09, Y87.1)	9	0	0	0	0	2	2	3	0	2	0	0	0	0
Human immunodeficiency virus (HIV) (B20-B24)	6	0	0	0	0	0	1	0	0	3	1	1	0	0
Certain conditions originating in the perinatal period (P00-P96)	13	13	0	0	0	0	0	0	0	0	0	0	0	0
Congenital malformations, deformations, and chromosomal abnormalities (Q00-Q99)	3	2	0	0	1	0	0	0	0	0	0	0	0	0
All other causes	146	2	0	2	1	0	0	5	4	13	13	29	77	0
TOTAL	708	19	1	2	3	3	7	15	19	56	104	137	342	0

Note: *ICD Codes, Tenth Revision.

Source: Delaware Department of Health and Social Services, Division of Public Health, Delaware Health Statistics Center

TABLE F-25. HIV INFECTION/AIDS¹ DEATHS BY COUNTY, RACE, HISPANIC² ORIGIN AND SEX, DELAWARE AND COUNTIES, 2002-2016

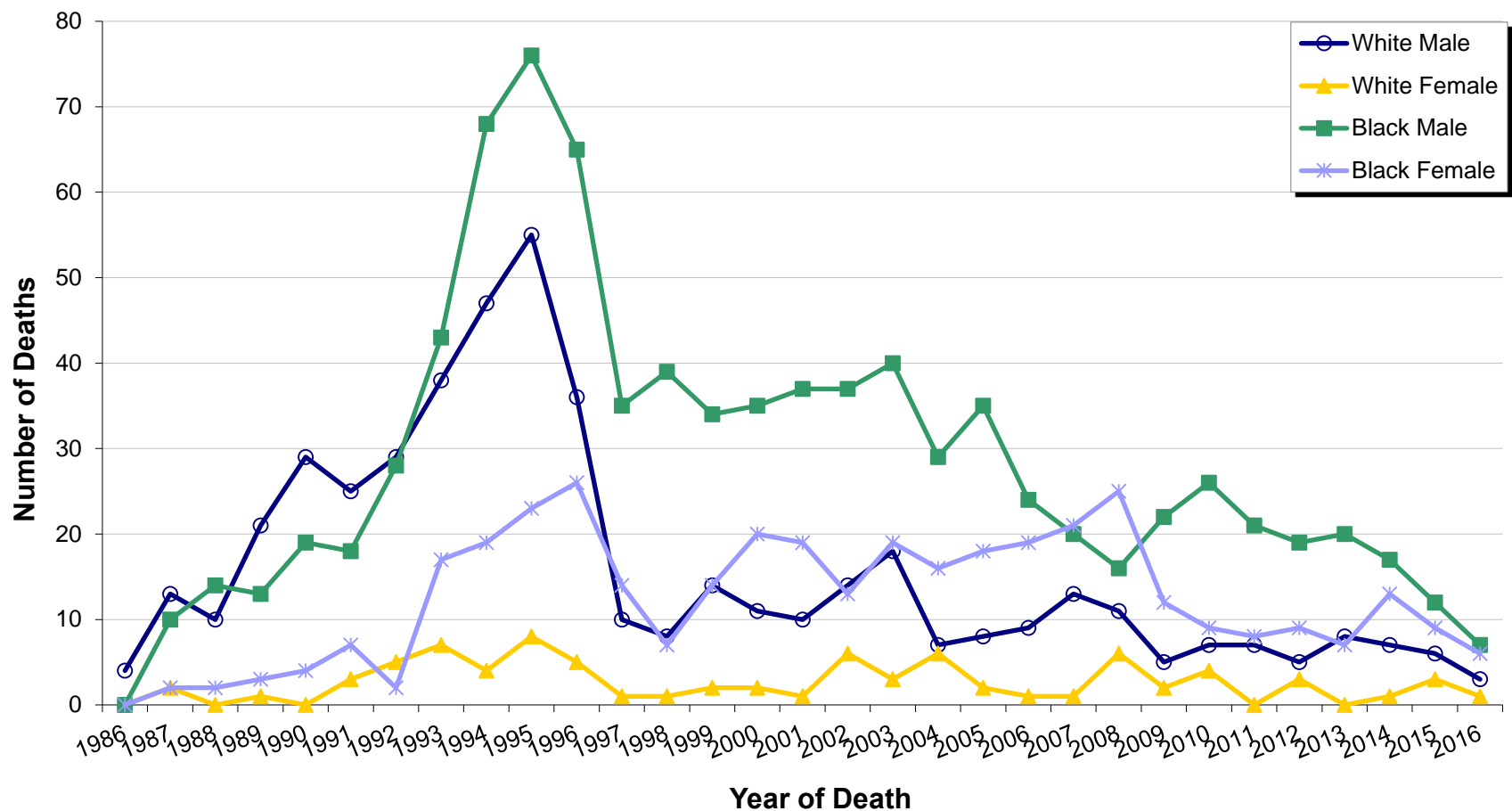
Area/ Race	2002	2003	2004	2005	2006	2007	2008	2009	2010	2011	2012	2013	2014	2015	2016
Delaware	70	80	58	63	53	55	58	41	46	36	36	36	38	31	17
Males	51	58	36	43	33	33	27	27	33	28	24	28	24	19	10
White	14	18	7	8	9	13	11	5	7	7	5	8	7	6	3
Black	37	40	29	35	24	20	16	22	26	21	19	20	17	12	7
Females	19	22	22	20	20	22	31	14	13	8	12	8	14	12	7
White	6	3	6	2	1	1	6	2	4	0	3	0	1	3	1
Black	13	19	16	18	19	21	25	12	9	8	9	7	13	9	6
Kent	4	8	8	5	11	9	8	5	10	5	8	4	4	8	3
Males	4	7	5	2	7	5	2	5	6	5	6	4	2	6	1
White	0	2	2	0	1	2	1	2	2	2	2	1	0	1	0
Black	4	5	3	2	6	3	1	3	4	3	4	3	2	5	1
Females	0	1	3	3	4	4	6	0	4	0	2	0	2	2	2
White	0	1	0	0	0	0	1	0	0	0	0	0	0	0	1
Black	0	0	3	3	4	4	5	0	4	0	2	0	2	2	1
New Castle	56	69	46	51	34	39	42	34	31	25	27	27	27	18	9
Males	40	49	29	35	19	21	17	21	23	18	17	19	18	10	5
White	9	15	4	6	5	6	4	2	2	4	3	4	6	2	1
Black	31	34	25	29	14	15	13	19	21	14	14	15	12	7	4
Females	16	20	17	16	15	18	25	13	8	7	10	8	9	8	4
White	4	2	5	2	1	1	5	1	4	0	3	0	1	2	0
Black	12	18	12	14	14	17	20	12	4	7	7	7	8	6	4
Wilmington	28	43	25	33	19	22	29	27	19	15	15	18	21	8	3
Males	22	30	15	21	7	10	13	16	16	9	9	13	16	4	1
White	4	5	0	2	0	0	1	1	0	0	2	1	4	0	0
Black	18	25	15	19	7	10	12	15	16	9	7	12	12	4	1
Females	6	13	10	12	12	12	16	11	3	6	6	5	5	4	2
White	0	0	1	1	1	1	3	1	1	0	0	0	0	1	0
Black	6	13	9	11	11	11	13	10	2	6	6	4	5	3	2
Bal of NCCo	28	26	21	18	15	17	13	7	12	10	12	9	6	10	6
Males	18	19	14	14	12	11	4	5	7	9	8	6	2	6	4
White	5	10	4	4	5	6	3	1	2	4	1	3	2	2	1
Black	13	9	10	10	7	5	1	4	5	5	7	3	0	3	3
Females	10	7	7	4	3	6	9	2	5	1	4	3	4	4	2
White	4	2	4	1	0	0	2	0	3	0	3	0	1	1	0
Black	6	5	3	3	3	6	7	2	2	1	1	3	3	3	2
Sussex	10	3	4	7	8	7	8	2	5	6	1	5	7	5	5
Males	7	2	2	6	7	7	8	1	4	5	1	5	4	3	4
White	5	1	1	2	3	5	6	1	3	1	0	3	1	3	2
Black	2	1	1	4	4	2	2	0	1	4	1	2	3	0	2
Females	3	1	2	1	1	0	0	1	1	1	0	0	3	2	1
White	2	0	1	0	0	0	0	1	0	0	0	0	0	1	0
Black	1	1	1	1	1	0	0	0	1	1	0	0	3	1	1
Hispanic	4	2	1	2	1	1	1	1	1	2	0	1	4	1	1
Males	4	1	0	2	0	0	1	1	1	2	0	0	4	1	0
Females	0	1	1	0	1	1	0	0	0	0	0	1	0	0	1

Notes:

1. See Table F-12 for ICD-9 and ICD-10 Codes.
2. People of Hispanic origin may be of any race. See Hispanic Origin in the Technical Notes.

Sources: Delaware Department of Health and Social Services, Division of Public Health, Delaware Health Statistics Center National Center for Health Statistics

Figure F-3. Number of HIV Deaths by Race and Sex, Delaware, 1986-2016



Source: Delaware Department of Health and Social Services, Division of Public Health, Delaware Health Statistics Center

TABLE F-26. NUMBER AND PERCENT OF DEATHS BY METHOD OF DISPOSITION, RACE, COUNTY, AND CITY OF WILMINGTON, DELAWARE, 2016

Area/ Method of Disposition	Race							
	All Races		White		Black		Other	
	Number	Percent	Number	Percent	Number	Percent	Number	Percent
Delaware	8,872	100.0	7,173	100.0	1,521	100.0	178	100.0
Burial	3,980	44.9	2,976	41.5	938	61.7	66	37.1
Cremation	4,428	49.9	3,785	52.8	546	35.9	97	54.5
Donation	141	1.6	134	1.9	6	0.4	1	0.6
Entombment	142	1.6	137	1.9	3	0.2	2	1.1
Removal from State	171	1.9	133	1.9	27	1.8	11	6.2
Unknown	10	0.1	8	0.1	1	0.1	1	0.6
Kent	1,626	100.0	1,261	100.0	325	100.0	40	100.0
Burial	782	48.1	553	43.9	215	66.2	14	35.0
Cremation	790	48.6	663	52.6	105	32.3	22	55.0
Donation	15	0.9	15	1.2	0	0.0	0	0.0
Entombment	4	0.2	3	0.2	1	0.3	0	0.0
Removal from State	33	2.0	26	2.1	4	1.2	3	7.5
Unknown	2	0.1	1	0.1	0	0.0	1	2.5
New Castle	4,666	100.0	3,579	100.0	975	100.0	112	100.0
Burial	2,183	46.8	1,579	44.1	568	58.3	36	32.1
Cremation	2,221	47.6	1,771	49.5	384	39.4	66	58.9
Donation	58	1.2	54	1.5	4	0.4	0	0.0
Entombment	113	2.4	110	3.1	1	0.1	2	1.8
Removal from State	87	1.9	61	1.7	18	1.8	8	7.1
Unknown	4	0.1	4	0.1	0	0.0	0	0.0
Wilmington	716	100.0	293	100.0	407	100.0	16	100.0
Burial	359	50.1	119	40.6	231	56.8	9	56.3
Cremation	320	44.7	147	50.2	166	40.8	7	43.8
Donation	9	1.3	7	2.4	2	0.5	0	0.0
Entombment	15	2.1	15	5.1	0	0.0	0	0.0
Removal from State	12	1.7	4	1.4	8	2.0	0	0.0
Unknown/Other	1	0.1	1	0.3	0	0.0	0	0.0
Balance of NC County	3,950	100.0	3,286	100.0	568	100.0	96	100.0
Burial	1,824	46.2	1,460	44.4	337	59.3	27	28.1
Cremation	1,901	48.1	1,624	49.4	218	38.4	59	61.5
Donation	49	1.2	47	1.4	2	0.4	0	0.0
Entombment	98	2.5	95	2.9	1	0.2	2	2.1
Removal from State	75	1.9	57	1.7	10	1.8	8	8.3
Unknown	3	0.1	3	0.1	0	0.0	0	0.0
Sussex	2,580	100.0	2,333	100.0	221	100.0	26	100.0
Burial	1,015	39.3	844	36.2	155	70.1	16	61.5
Cremation	1,417	54.9	1,351	57.9	57	25.8	9	34.6
Donation	68	2.6	65	2.8	2	0.9	1	3.8
Entombment	25	1.0	24	1.0	1	0.5	0	0.0
Removal from State	51	2.0	46	2.0	5	2.3	0	0.0
Unknown	4	0.2	3	0.1	1	0.5	0	0.0

Note: Percentages are calculated based upon the total number of deaths in each race category.

Source: Delaware Department of Health and Social Services, Division of Public Health, Delaware Health Statistics Center

TABLE F-27. LIFE EXPECTANCY AT BIRTH* BY RACE AND SEX, DELAWARE, 1996-2016

Year	Race and Sex								
	All Races			White			Black		
	Both Sexes	Male	Female	Both Sexes	Male	Female	Both Sexes	Male	Female
2016	78.8	75.7	81.8	79.0	76.0	82.1	76.1	72.1	79.9
2015	79.2	76.5	81.9	79.7	77.0	82.5	76.9	74.1	79.3
2014	79.6	76.9	82.1	79.8	77.1	82.5	76.7	73.8	79.4
2013	78.9	76.2	81.5	79.3	76.7	81.8	76.8	73.5	79.7
2012	79.5	77.0	81.8	79.7	77.3	81.9	77.8	74.3	81.1
2011	79.1	76.6	81.5	79.4	77.0	81.6	77.3	73.7	80.6
2010	79.1	76.4	81.7	79.4	76.9	81.7	76.7	72.5	80.7
2009	78.9	76.3	81.4	79.6	77.1	82.1	76.0	72.7	79.0
2008	78.3	75.7	80.8	78.9	76.3	81.4	75.7	72.7	78.4
2007	78.8	76.0	81.5	79.2	76.5	81.9	76.2	72.9	79.3
2006	78.4	75.7	81.0	79.1	76.4	81.7	74.8	71.4	77.8
2005	77.7	75.0	80.2	78.4	75.7	81.0	74.1	71.3	76.6
2004	77.8	74.9	80.5	78.3	75.5	80.9	73.8	70.4	77.0
2003	76.9	74.5	80.0	78.1	75.3	80.7	72.6	69.2	75.8
2002	77.3	74.6	79.8	77.8	75.4	80.1	73.8	69.5	77.9
2001	76.3	73.9	78.7	77.1	74.6	79.5	72.1	69.5	74.4
2000	76.5	73.9	79.0	77.1	74.5	79.6	72.5	69.4	75.5
1999	76.8	73.9	79.6	77.6	74.7	80.3	72.6	68.8	76.2
1998	75.9	73.3	78.4	77.0	74.5	79.4	70.3	66.9	73.5
1997	75.8	73.3	78.2	76.7	74.2	79.1	71.0	68.3	73.5
1996	75.4	72.5	78.1	76.7	73.9	79.4	68.8	65.2	72.2

Note:
*Life expectancy at birth is the average expected lifetime of people born in the listed year.

Source:
Delaware Department of Health and Social Services, Division of Public Health, Delaware Health Statistics Center

TABLE F-28. AVERAGE REMAINING YEARS OF LIFE* BY AGE, RACE, AND SEX, DELAWARE, 2016

Age Group	Race and Sex								
	All Races			White			Black		
	Both Sexes	Male	Female	Both Sexes	Male	Female	Both Sexes	Male	Female
0-5	78.8	75.7	81.8	79.0	76.0	82.1	76.1	72.1	79.9
5-10	74.4	71.3	77.4	74.4	71.4	77.5	72.1	68.1	75.8
10-15	69.4	66.4	72.5	69.5	66.5	72.5	67.1	63.2	70.9
15-20	64.5	61.4	67.5	64.5	61.6	67.5	62.3	58.2	66.1
20-25	59.6	56.7	62.6	59.6	56.8	62.5	57.5	53.6	61.2
25-30	54.9	52.1	57.7	55.0	52.2	57.7	52.8	49.0	56.4
30-35	50.3	47.6	53.0	50.4	47.8	53.0	48.2	44.5	51.7
35-40	45.8	43.2	48.3	45.9	43.4	48.3	43.6	40.0	46.9
40-45	41.2	38.7	43.5	41.3	39.0	43.6	39.0	35.7	42.0
45-50	36.6	34.3	38.8	36.7	34.5	38.9	34.6	31.5	37.5
50-55	32.2	29.9	34.3	32.3	30.2	34.4	30.2	27.1	32.9
55-60	27.9	25.8	29.9	28.0	26.0	29.9	26.2	23.4	28.7
60-65	23.9	21.9	25.7	24.0	22.1	25.8	22.3	19.5	24.6
65-70	20.1	18.3	21.7	20.2	18.4	21.8	18.6	16.1	20.7
70-75	16.7	15.0	18.1	16.7	15.1	18.1	15.6	13.1	17.7
75-80	13.6	12.1	14.7	13.6	12.1	14.7	12.7	10.8	14.1
80-85	10.9	9.7	11.8	10.9	9.7	11.7	10.6	8.9	11.7
85+	8.7	7.6	9.5	8.6	7.6	9.3	8.8	6.6	10.0

Note: *Average number of years of life remaining at the beginning of the age interval.

Source: Delaware Department of Health and Social Services, Division of Public Health, Delaware Health Statistics Center

**TABLE F-29. MATERNAL DEATHS BY COUNTY,
DELAWARE, 1986-2016**

Year	Area			
	Delaware	Kent	New Castle	Sussex
2016	1	0	1	0
2015	1	0	1	0
2014	1	0	1	0
2013	0	0	0	0
2012	2	0	0	2
2011	1	0	0	1
2010	2	0	0	2
2009	4	1	3	0
2008	3	1	2	0
2007	1	0	1	0
2006	1	0	1	0
2005	3	0	3	0
2004	1	0	1	0
2003	2	0	2	0
2002	0	0	0	0
2001	2	0	1	1
2000	3	1	2	0
1999	1	0	1	0
1998	2	0	2	0
1997	1	0	1	0
1996	0	0	0	0
1995	0	0	0	0
1994	0	0	0	0
1993	0	0	0	0
1992	0	0	0	0
1991	1	0	0	1

Note: Prior to 1999, maternal deaths included ICD-9 categories 630-676. For 1999 and later, maternal deaths include ICD-10 categories O00-O95, O98-O99, and A34.

Source: Delaware Department of Health and Social Services, Division of Public Health, Delaware Health Statistics Center

TABLE F-30. FIVE-YEAR AGE-ADJUSTED MORTALITY RATES FOR SELECTED CAUSES OF DEATH BY COUNTY, DELAWARE, 2012-2016

LEADING CAUSES OF DEATH	AREA				RACE	
	DE	Kent	NCC	Sussex	White	Black
Malignant neoplasms	168.3	197.0	165.6	160.1	167.8	189.9
Diseases of the heart	156.7	192.7	150.4	151.9	153.5	185.0
Chronic lower respiratory diseases	40.3	50.5	38.5	39.2	42.5	34.3
Cerebrovascular diseases	36.2	41.9	41.0	27.1	33.6	51.6
Dementia	35.6	39.5	42.3	24.7	35.4	41.7
Accidents (unintentional injuries)	45.0	51.1	42.1	51.0	51.1	33.9
Diabetes mellitus	18.9	22.5	18.5	17.0	16.4	34.4
Alzheimer's disease	18.6	22.6	20.3	14.7	18.3	23.1
Nephritis, nephrotic syndrome, and nephrosis	14.5	19.3	15.4	10.8	12.4	27.2
Influenza and pneumonia	12.2	14.3	13.8	8.7	12.6	11.2
Septicemia	11.9	17.0	11.5	10.4	11.6	15.6
Intentional self-harm (suicide)	12.6	14.0	12.0	12.9	15.4	5.7
Other diseases of respiratory system	8.9	11.4	9.0	7.9	9.3	7.6
Chronic liver disease and cirrhosis	8.2	8.6	6.8	11.3	9.2	5.6
Certain conditions originating in the perinatal period	6.1	4.9	7.4	3.8	3.6	10.7
Assault (homicide)	6.9	5.6	8.6	3.1	2.6	19.3
Parkinson's disease	6.5	6.2	7.1	5.8	7.2	3.0
Human immunodeficiency virus (HIV)	3.0	3.0	3.5	2.1	1.0	11.3
Essential hypertension and hypertensive renal disease	4.6	6.5	4.1	4.2	4.0	8.1
Pneumonitis due to solids and liquids	4.8	5.6	5.3	3.6	4.9	4.5
Aortic aneurysm and dissection	2.8	4.0	2.7	2.4	2.8	3.5
Congenital malformations, deformations, and chromosomal abnormalities	2.7	3.0	2.4	3.2	2.6	3.0

Notes:

1. Rates per 100,000, adjusted to U.S. 2000 population.
2. See Appendix E for ICD-10 cause of death codes.
3. "NA" indicates rate does not meet standards of reliability or precision; based on fewer than 20 deaths in the numerator.

Source: Delaware Department of Health and Social Services, Division of Public Health, Delaware Health Statistics Center

TABLE F-31. FIVE-YEAR AGE-ADJUSTED MORTALITY RATES FOR SELECTED LEADING CAUSES OF DEATH BY COUNTY, DELAWARE, 1996-2016

Cause of Death/ Area	1996 -2000	1997 -2001	1998 -2002	1999 -2003	2000 -2004	2001 -2005	2002 -2006	2003 -2007	2004 -2008	2005 -2009	2006 -2010	2007 -2011	2008 -2012	2009 -2013	2010 -2014	2011 -2015	2012 -2016
Diseases of the heart																	
Delaware	275.1	267.4	257.5	252.3	244.2	236.7	223.9	215.1	201.7	190.0	178.8	172.6	165.6	162.7	160.3	158.8	156.7
Kent	308.3	304.4	296.9	291.0	279.6	275.3	267.2	262.7	251.6	243.1	233.7	223.9	211.3	207.1	200.2	193.9	192.7
New Castle	267.1	259.7	250.9	246.2	240.3	233.5	220.1	211.3	196.1	182.9	171.0	165.4	158.3	156.0	153.9	152.6	150.4
Sussex	276.3	265.3	251.9	246.4	235.3	224.0	209.7	198.6	187.4	176.6	166.1	160.8	156.7	153.6	153.7	153.8	151.9
Malignant neoplasms																	
Delaware	221.2	218.0	210.9	206.7	202.9	201.3	195.0	193.9	192.0	186.1	183.5	181.4	178.4	173.8	172.2	169.3	168.3
Kent	220.4	221.9	219.0	217.8	211.9	213.8	206.3	208.8	210.6	208.1	206.8	205.9	208.0	199.6	199.5	198.8	197.0
New Castle	223.4	219.9	212.7	206.7	203.2	202.3	195.2	192.8	192.8	187.1	184.2	184.4	181.1	175.8	172.7	169.0	165.6
Sussex	218.0	213.1	203.9	202.0	198.6	194.2	190.6	190.4	183.0	175.0	171.3	164.3	158.9	158.0	158.5	156.9	160.1
Cerebrovascular diseases																	
Delaware	51.8	51.6	51.7	51.0	48.8	45.9	44.1	41.5	39.0	38.9	38.2	37.7	37.2	36.9	36.3	36.1	36.2
Kent	60.6	55.1	55.8	53.8	50.6	49.4	48.4	42.6	39.4	41.2	39.0	36.7	39.0	39.0	38.4	39.5	41.9
New Castle	53.1	53.8	54.0	54.1	52.4	49.4	48.0	47.3	44.6	44.1	43.3	43.4	42.2	42.6	41.8	41.6	41.0
Sussex	44.1	45.0	44.3	42.9	40.6	36.8	34.1	30.0	28.5	28.4	29.0	28.8	28.5	27.3	27.1	26.7	27.1
Chronic lower respiratory diseases																	
Delaware	42.5	41.9	42.2	41.3	40.5	41.0	40.6	39.8	41.4	41.9	41.2	42.2	41.9	41.0	40.4	40.3	40.3
Kent	52.5	49.4	45.1	44.7	45.7	48.9	49.6	51.4	55.5	55.9	54.7	55.7	55.9	50.6	49.3	50.2	50.5
New Castle	41.5	41.8	41.5	40.5	40.0	39.4	39.2	39.2	41.2	41.5	40.9	42.2	41.3	40.5	39.9	39.5	38.5
Sussex	38.7	37.7	41.8	40.6	38.5	40.0	38.8	35.8	35.5	36.0	35.5	36.1	36.2	37.3	37.5	37.5	39.2
Diabetes mellitus																	
Delaware	26.9	26.9	26.4	25.8	25.8	26.0	24.6	24.0	22.8	22.0	20.6	20.7	20.6	20.0	19.9	19.7	18.9
Kent	28.8	27.6	28.3	28.0	27.3	30.6	30.5	29.0	28.6	28.8	26.3	25.2	23.9	23.7	21.4	21.5	22.5
New Castle	26.6	27.3	26.2	25.1	26.1	26.1	24.4	24.4	23.3	22.2	21.1	21.9	21.9	21.1	21.0	20.3	18.5
Sussex	26.6	25.9	26.0	26.2	24.6	23.7	21.8	20.8	18.9	18.0	16.5	16.3	16.6	16.1	16.9	17.4	17.0
Influenza and pneumonia																	
Delaware	30.2	28.7	26.2	22.2	21.1	18.7	16.9	15.0	14.7	13.8	12.9	12.4	12.1	11.9	12.0	12.6	12.2
Kent	36.5	34.1	31.7	27.3	24.9	20.4	19.9	18.1	17.3	16.1	15.0	13.8	14.4	13.8	14.4	14.4	14.3
New Castle	27.5	25.1	23.2	19.2	17.7	15.8	14.4	13.0	13.6	13.6	13.4	13.4	13.2	12.9	13.2	14.2	13.8
Sussex	33.3	34.4	30.2	26.3	26.9	23.9	20.4	17.6	15.5	13.0	11.1	10.2	9.4	9.4	9.1	9.2	8.7
Alzheimer's disease																	
Delaware	11.1	13.2	14.6	16.5	17.0	18.0	18.5	19.2	19.5	18.9	18.9	18.5	18.1	17.3	17.1	17.3	18.6
Kent	5.0	8.8	10.1	12.1	12.8	14.1	13.2	15.9	17.9	18.6	20.3	22.7	22.7	22.0	20.4	21.6	22.6
New Castle	13.8	16.0	17.4	18.8	18.1	18.1	18.4	18.6	17.8	17.1	17.0	15.5	15.3	15.7	16.6	17.4	20.3
Sussex	8.2	9.1	10.8	13.7	16.9	19.8	21.4	22.2	23.7	22.4	21.7	21.9	20.8	18.0	16.4	15.3	14.7
Nephritis, nephrotic syndrome, and nephrosis																	
Delaware	13.5	13.6	14.1	14.2	14.5	14.4	14.9	15.3	16.0	16.4	16.5	16.2	15.2	14.6	14.1	14.0	14.5
Kent	12.4	15.3	17.6	18.0	19.9	18.3	16.7	15.8	17.5	16.1	16.5	16.3	15.6	14.5	16.0	17.2	19.3
New Castle	14.2	13.8	13.6	13.4	13.8	14.0	15.0	16.3	17.4	18.0	18.3	18.0	16.6	15.8	15.4	15.2	15.4
Sussex	12.8	12.2	13.7	14.3	13.1	13.0	13.5	13.1	12.4	13.6	13.2	12.8	12.6	12.7	11.1	10.9	10.8
Septicemia																	
Delaware	15.2	15.6	16.0	16.0	15.9	15.1	14.3	13.4	13.1	12.6	11.9	11.5	11.3	11.4	11.4	11.7	11.9
Kent	13.8	14.4	15.7	17.0	18.3	17.7	18.5	18.1	18.2	17.3	18.0	17.4	16.6	17.2	17.8	16.8	17.0
New Castle	17.5	17.5	17.4	17.1	16.6	15.7	14.8	13.9	13.8	13.3	12.0	11.6	10.9	10.9	11.0	11.2	11.5
Sussex	10.8	12.0	12.8	13.0	13.3	12.8	11.4	10.2	9.4	9.2	8.6	8.2	9.0	9.1	8.8	9.9	10.4

See footnotes at the end of the table

TABLE F-31. FIVE-YEAR AGE-ADJUSTED MORTALITY RATES FOR SELECTED LEADING CAUSES OF DEATH BY COUNTY, DELAWARE, 1996-2016 - CONTINUED

Cause of Death/ Area	1996 -2000	1997 -2001	1998 -2002	1999 -2003	2000 -2004	2001 -2005	2002 -2006	2003 -2007	2004 -2008	2005 -2009	2006 -2010	2007 -2011	2008 -2012	2009 -2013	2010 -2014	2011 -2015	2012 -2016
Intentional self-harm (suicide)																	
Delaware	11.0	11.2	10.7	11.1	11.1	11.0	10.2	10.4	10.6	10.7	11.0	11.3	11.9	12.0	12.3	12.6	12.6
Kent	12.6	12.1	11.7	11.5	10.5	10.1	10.3	9.8	10.3	11.2	11.2	11.3	12.4	13.0	14.0	14.2	14.0
New Castle	9.8	10.3	9.9	10.7	11.0	11.2	10.0	10.4	10.3	10.1	10.2	10.7	11.2	11.3	11.5	12.0	12.0
Sussex	13.3	12.8	12.2	11.8	11.4	10.4	10.8	11.0	11.8	12.1	13.5	13.1	13.5	12.9	13.2	12.7	12.9
Chronic liver disease and cirrhosis																	
Delaware	9.3	9.0	9.4	9.8	9.8	9.5	9.1	8.5	8.0	8.1	8.4	8.5	8.4	8.1	8.2	8.4	8.2
Kent	10.5	10.8	11.4	12.1	11.5	10.7	10.1	9.7	8.7	9.2	9.5	9.9	8.9	8.2	8.6	9.0	8.6
New Castle	9.0	8.3	8.6	9.1	9.5	8.9	8.9	8.0	7.6	7.3	7.6	7.4	7.6	7.2	7.1	7.2	6.8
Sussex	9.0	9.7	10.1	10.5	10.1	10.5	9.3	9.2	8.7	9.0	9.3	10.1	10.0	9.9	10.5	11.0	11.3
Assault (homicide)																	
Delaware	4.2	3.6	3.7	3.5	3.8	4.5	4.9	5.0	5.9	6.1	6.1	6.1	6.5	6.1	6.4	6.6	6.9
Kent	---	---	---	---	---	---	3.0	3.6	4.4	4.0	4.1	3.9	3.9	3.8	4.6	5.1	5.6
New Castle	5.1	4.5	4.6	4.3	4.6	5.3	5.9	6.0	7.1	7.4	7.5	7.4	8.2	7.9	8.1	8.3	8.6
Sussex	2.8	---	---	---	---	3.6	3.3	2.9	3.2	3.6	3.5	3.7	3.6	3.0	3.2	2.8	3.1
Certain conditions originating in the perinatal period																	
Delaware	6.7	7.8	8.3	8.4	8.2	8.2	7.4	7.0	6.8	6.9	6.1	6.1	6.2	5.8	5.5	6.2	6.1
Kent	6.8	7.2	7.9	8.1	8.1	7.9	6.5	5.1	4.9	5.4	4.2	4.7	5.5	4.9	4.1	5.0	4.9
New Castle	6.9	8.2	8.8	9.2	8.7	8.7	8.1	7.8	7.6	7.8	7.1	7.4	7.5	7.2	6.9	7.5	7.4
Sussex	5.8	7.2	6.8	6.0	6.3	6.6	6.1	6.4	6.1	5.8	4.6	3.5	2.7	2.8	2.9	3.6	3.8
Congenital malformations																	
Delaware	3.9	3.7	3.5	3.4	3.4	3.1	3.1	2.8	2.8	2.6	2.9	2.8	2.9	2.9	2.9	2.8	2.7
Kent	3.2	3.3	3.9	3.5	3.4	3.0	3.4	2.8	3.2	2.8	3.4	3.2	3.1	2.8	2.9	3.4	3.0
New Castle	3.9	3.6	3.2	3.1	3.2	3.0	2.9	2.7	2.6	2.5	2.6	2.6	2.9	2.9	2.7	2.5	2.4
Sussex	4.8	4.6	4.0	3.9	3.8	3.7	3.6	3.4	3.0	2.6	3.2	3.0	2.9	3.4	3.2	3.0	3.2
Human immunodeficiency virus (HIV)																	
Delaware	9.9	8.1	8.2	8.8	8.4	8.2	7.7	7.2	6.5	6.0	5.5	5.1	4.6	4.0	3.8	3.4	3.0
Kent	5.9	5.2	4.8	5.2	5.1	5.1	5.2	5.8	5.6	5.1	5.6	4.7	4.3	3.7	3.5	3.1	3.0
New Castle	12.1	9.8	9.9	10.8	10.7	10.4	9.6	8.8	7.7	7.1	6.3	6.0	5.5	4.9	4.6	4.0	3.5
Sussex	5.9	5.2	5.8	5.5	4.3	3.7	3.9	3.5	3.9	3.8	3.4	3.2	2.5	---	2.3	2.2	2.1
Accidents (unintentional injuries)																	
Delaware	36.0	36.9	36.4	36.0	35.8	35.1	35.2	34.7	35.6	35.9	36.8	36.4	37.3	37.8	39.5	41.2	45.0
Kent	37.5	38.9	37.7	37.6	38.3	38.9	40.5	39.5	39.7	38.0	37.5	35.0	37.7	38.7	42.9	45.4	51.1
New Castle	34.0	34.5	34.6	33.7	32.3	31.6	31.8	31.6	32.7	33.2	34.2	34.4	34.9	35.7	37.5	39.6	42.1
Sussex	42.1	44.0	42.1	43.0	46.4	44.1	42.5	42.4	43.9	44.8	46.6	45.9	46.0	44.9	44.0	44.9	51.0
Essential hypertension and hypertensive renal disease																	
Delaware	4.8	5.2	5.7	5.9	6.9	7.2	6.8	6.3	6.0	5.4	5.1	5.0	4.8	5.0	4.7	4.5	4.6
Kent	4.5	5.5	6.3	6.3	7.1	8.9	9.1	7.8	7.8	7.6	7.4	7.3	7.7	8.1	7.6	6.7	6.5
New Castle	4.4	4.9	5.4	5.9	7.2	7.5	7.0	6.9	6.3	5.6	5.1	5.1	4.7	4.6	4.3	4.1	4.1
Sussex	6.1	5.7	5.9	5.6	5.9	5.4	5.0	4.4	4.4	4.1	4.0	3.8	3.7	4.2	3.9	4.1	4.2
Aortic aneurysm and dissection																	
Delaware	6.4	6.6	6.3	6.7	6.3	5.8	5.0	4.5	3.7	3.4	3.2	3.2	3.2	3.1	3.0	2.9	2.8
Kent	9.0	9.3	9.9	10.0	9.3	8.3	7.2	5.5	4.0	3.0	2.8	2.8	3.4	4.3	4.5	4.2	4.0
New Castle	5.8	6.2	5.9	6.3	5.8	5.4	4.5	3.8	3.2	3.2	3.2	3.3	3.5	3.1	2.8	2.8	2.7
Sussex	6.5	6.0	5.4	5.9	6.1	5.7	5.3	5.4	4.7	4.1	3.5	3.2	2.7	2.4	2.4	2.4	2.4

See footnotes at the end of the table

TABLE F-31. FIVE-YEAR AGE-ADJUSTED MORTALITY RATES FOR SELECTED LEADING CAUSES OF DEATH BY COUNTY, DELAWARE, 1996-2016 - CONTINUED

Cause of Death/ Area	1996 -2000	1997 -2001	1998 -2002	1999 -2003	2000 -2004	2001 -2005	2002 -2006	2003 -2007	2004 -2008	2005 -2009	2006 -2010	2007 -2011	2008 -2012	2009 -2013	2010 -2014	2011 -2015	2012 -2016
Pneumonitis due to solids and liquids																	
Delaware	7.8	8.9	9.1	9.7	8.9	8.2	7.1	6.3	5.4	5.2	4.8	4.6	4.3	4.3	4.2	4.6	4.8
Kent	4.8	4.1	5.0	5.9	5.3	5.4	5.0	3.9	3.3	3.4	3.0	3.4	3.5	3.6	3.9	4.4	5.6
New Castle	8.9	10.6	10.5	10.9	9.9	9.2	7.5	6.6	5.5	5.2	4.7	4.6	4.4	4.6	4.5	5.2	5.3
Sussex	7.1	7.7	8.5	9.3	9.1	7.8	7.5	7.1	6.3	6.1	5.8	5.4	4.7	4.2	4.0	3.8	3.6
Other diseases of respiratory system																	
Delaware	8.3	8.4	8.8	8.4	8.7	8.5	8.9	8.8	9.0	8.8	8.8	9.0	9.3	9.2	9.3	9.2	8.9
Kent	9.2	8.9	9.6	9.5	9.5	9.0	10.3	10.6	10.5	10.6	11.3	11.7	12.1	12.2	11.9	11.4	11.4
New Castle	7.8	8.1	8.3	8.2	8.8	8.7	8.7	8.3	9.0	8.7	8.4	9.3	10.2	9.6	9.9	9.8	9.0
Sussex	9.3	8.9	9.4	8.4	8.3	7.6	8.4	8.6	8.3	8.3	8.3	7.2	6.7	7.4	7.0	7.3	7.9
Parkinson's disease																	
Delaware	4.6	5.1	5.5	5.5	5.4	5.7	5.5	5.6	5.6	5.6	5.2	5.7	5.8	6.2	6.6	6.8	6.5
Kent	---	4.3	4.6	4.7	4.1	4.7	4.6	4.4	4.4	5.5	5.1	5.2	5.3	5.4	5.4	6.2	6.2
New Castle	5.0	5.5	6.0	5.9	5.9	6.2	6.1	6.4	6.3	6.1	5.6	6.1	6.3	6.9	7.5	7.5	7.1
Sussex	4.1	4.7	5.0	4.9	5.1	5.3	4.7	4.8	5.1	4.9	4.6	5.2	5.5	5.6	5.7	6.0	5.8
Dementia																	
Delaware	6.5	7.2	8.5	9.5	10.6	12.1	16.1	19.8	24.7	30.0	34.4	36.4	38.9	38.4	38.0	36.9	35.6
Kent	8.6	8.8	12.6	13.9	14.6	13.1	14.2	15.3	20.5	26.3	30.3	35.7	40.4	41.7	40.9	42.6	39.5
New Castle	6.3	7.3	8.3	9.2	10.6	13.2	18.8	24.8	31.8	38.6	43.8	45.8	47.5	46.0	45.1	43.6	42.3
Sussex	5.8	5.9	6.7	7.7	8.6	9.7	11.7	12.2	13.4	16.1	19.8	21.1	24.5	25.1	26.2	25.1	24.7

Notes:

1. Rates per 100,000, adjusted to U.S. 2000 population.
2. See Appendix E for ICD-9 and ICD-10 cause of death codes.
3. "----" indicates rate does not meet standards of reliability or precision; based on fewer than 20 deaths in the numerator.

Source: Delaware Department of Health and Social Services, Division of Public Health, Delaware Health Statistics Center

TABLE F-32. FIVE-YEAR AGE-ADJUSTED MORTALITY RATES FOR SELECTED LEADING CAUSES OF DEATH BY RACE AND SEX, DELAWARE, 1995-2016

Cause of Death/ Race-Sex	1996 -2000	1997 -2001	1998 -2002	1999 -2003	2000 -2004	2001 -2005	2002 -2006	2003 -2007	2004 -2008	2005 -2009	2006 -2010	2007 -2011	2008 -2012	2009 -2013	2010 -2014	2011 -2015	2012 -2016
Diseases of the heart																	
White	270.1	262.1	251.9	246.3	237.2	229.4	217.3	209.0	197.2	186.5	176.0	170.8	163.3	160.1	157.8	156.4	153.5
Male	341.3	328.7	312.4	303.9	294.7	283.0	268.7	261.6	248.9	234.3	222.1	217.3	208.1	203.3	202.3	201.8	199.1
Female	215.9	210.6	205.2	201.1	192.0	187.0	176.7	167.2	157.0	148.6	139.7	133.9	127.8	125.2	122.2	119.8	116.5
Black	311.9	306.3	296.9	298.4	298.7	293.4	278.4	268.3	241.3	220.1	206.0	192.0	187.9	185.6	185.5	181.1	185.0
Male	378.9	364.6	356.0	357.2	362.7	347.8	338.1	325.2	293.0	263.7	261.0	245.2	234.1	225.7	224.0	217.5	224.6
Female	264.8	263.9	254.8	257.1	252.8	253.7	235.1	224.5	202.5	186.4	166.1	152.5	154.2	154.2	156.3	154.5	156.5
Malignant neoplasms																	
White	214.1	212.8	206.7	201.6	199.2	198.0	191.7	191.7	191.5	185.3	182.8	181.2	177.1	172.4	171.1	168.3	167.8
Male	264.9	259.5	253.3	247.7	245.9	244.5	237.1	233.0	231.6	222.4	220.1	214.6	209.8	204.7	202.4	198.5	200.8
Female	182.6	182.9	176.2	171.1	167.8	166.7	160.9	163.5	163.7	159.0	156.0	157.2	153.8	149.3	148.7	146.5	143.4
Black	285.0	267.6	253.6	254.8	241.8	240.0	233.3	223.8	212.2	207.8	202.2	197.8	202.3	197.9	195.8	191.4	189.9
Male	371.3	343.0	334.0	334.1	309.9	311.5	300.6	283.3	263.4	261.0	256.4	250.0	250.5	246.0	238.2	222.2	222.2
Female	235.3	223.7	208.4	207.6	199.2	195.2	189.8	184.9	178.0	173.0	166.8	162.6	170.1	166.9	168.0	172.6	171.2
Cerebrovascular diseases																	
White	49.2	49.3	49.2	48.8	46.4	43.4	41.9	39.0	36.6	36.3	35.8	35.6	35.2	34.7	34.5	34.1	33.6
Male	50.5	52.0	50.8	50.3	48.7	47.0	42.5	38.7	35.5	34.0	33.1	34.9	35.6	35.2	35.3	34.9	33.7
Female	47.3	46.7	47.5	47.1	44.6	41.1	41.2	38.6	36.9	37.3	36.9	35.4	34.7	34.1	33.8	33.4	33.4
Black	70.7	68.6	69.9	66.8	67.2	64.5	61.1	60.2	57.8	57.3	54.3	50.9	49.4	48.9	46.2	47.2	51.6
Male	78.1	66.8	67.4	63.8	60.0	61.8	64.1	66.7	66.1	66.0	63.5	61.5	57.6	55.6	55.7	54.4	59.7
Female	64.4	67.2	68.6	66.4	68.7	64.4	58.5	55.6	52.3	51.5	47.4	43.3	43.7	44.0	40.1	42.6	46.7
Chronic lower respiratory diseases																	
White	43.5	42.7	43.1	42.2	41.3	42.3	42.0	41.4	43.1	43.8	43.1	44.4	43.9	43.0	42.6	42.4	42.5
Male	54.5	52.3	51.1	47.7	46.0	46.7	45.4	45.0	47.9	47.7	45.5	46.3	44.5	42.6	42.5	44.4	43.8
Female	38.3	38.0	38.9	39.4	38.6	39.6	39.9	38.9	39.5	41.0	41.3	43.0	43.6	43.6	42.8	41.2	41.7
Black	35.6	35.8	35.1	34.0	34.4	32.2	32.5	32.3	34.1	33.2	33.2	33.9	35.1	33.3	32.8	33.5	34.3
Male	51.1	50.9	53.0	51.9	50.3	46.3	47.7	46.6	51.4	48.7	47.3	47.6	46.6	42.5	41.0	42.1	40.1
Female	25.8	26.0	24.0	22.4	23.9	23.6	23.7	24.2	24.9	25.0	25.6	26.0	28.2	27.6	27.7	28.3	30.8
Diabetes mellitus																	
White	23.2	23.5	22.7	22.4	22.2	22.8	21.5	20.8	19.8	19.3	17.8	17.5	17.7	17.1	16.7	16.7	16.4
Male	26.0	25.7	26.0	25.8	25.7	26.3	25.5	25.4	24.0	23.1	21.5	21.2	21.1	21.3	20.8	20.9	20.7
Female	21.3	21.8	20.3	19.7	19.6	20.2	18.6	17.5	16.7	16.2	14.6	14.3	14.6	13.4	13.3	13.2	12.9
Black	55.1	53.0	54.0	50.8	51.7	50.8	47.2	46.7	44.1	40.9	38.7	41.1	38.8	39.1	39.5	37.8	34.4
Male	59.1	59.5	62.1	54.7	56.1	54.4	50.9	49.6	50.5	46.5	45.0	45.0	42.5	43.4	46.1	45.1	43.9
Female	54.0	49.9	50.2	48.4	49.1	48.6	45.7	44.7	39.9	37.0	33.9	37.3	35.6	36.3	35.3	33.8	28.7
Influenza and pneumonia																	
White	30.3	29.2	26.7	22.6	21.4	18.8	17.0	15.0	14.7	14.1	13.1	12.5	12.2	12.1	12.0	12.8	12.6
Male	38.2	36.3	33.2	27.0	26.1	22.6	20.8	18.4	17.8	17.1	16.3	15.4	15.0	14.7	14.0	14.9	14.7
Female	25.9	25.1	22.8	19.7	18.5	16.4	14.4	12.9	12.8	12.1	11.0	10.5	10.3	10.4	10.7	11.3	11.1
Black	30.1	25.5	23.1	20.1	20.3	18.2	17.4	15.6	15.2	12.6	12.0	12.2	12.3	11.7	13.0	12.5	11.2
Male	45.0	39.0	32.8	28.7	31.8	28.5	26.1	24.3	24.8	18.6	17.6	17.3	15.0	13.9	14.8	14.2	12.8
Female	21.6	17.4	16.8	14.7	14.1	12.4	12.7	11.4	10.7	9.8	9.2	9.2	10.4	10.1	11.9	11.4	10.5

See footnotes at the end of the table

TABLE F-32. FIVE-YEAR AGE-ADJUSTED MORTALITY RATES FOR SELECTED LEADING CAUSES OF DEATH BY RACE AND SEX, DELAWARE, 1995-2016 - CONTINUED

Cause of Death/ Race-Sex	1996 -2000	1997 -2001	1998 -2002	1999 -2003	2000 -2004	2001 -2005	2002 -2006	2003 -2007	2004 -2008	2005 -2009	2006 -2010	2007 -2011	2008 -2012	2009 -2013	2010 -2014	2011 -2015	2012 -2016
Alzheimer's disease																	
White	11.5	13.8	15.3	17.1	17.4	18.5	18.9	19.7	20.2	19.5	19.2	18.8	18.2	17.2	16.9	17.2	18.3
Male	10.0	12.4	14.3	15.1	14.8	15.6	16.2	17.0	17.5	17.2	16.5	15.4	14.8	14.3	13.8	14.8	16.5
Female	12.1	14.6	15.8	18.1	18.9	20.1	20.3	21.1	21.6	20.6	20.8	20.9	20.4	18.9	18.8	18.6	19.3
Black	8.2	8.8	9.8	12.7	14.1	14.4	14.5	15.7	14.5	14.8	16.6	17.2	18.7	19.9	19.6	19.6	23.1
Male	---	---	---	---	14.2	---	---	13.4	12.7	12.3	13.6	13.7	13.4	15.2	14.8	15.8	19.9
Female	8.2	8.3	8.8	12.1	13.7	15.6	15.5	16.4	14.9	15.8	17.7	18.7	6.1	6.3	6.1	5.9	7.0
Nephritis, nephrotic syndrome, and nephrosis																	
White	11.2	11.1	11.9	12.2	12.6	12.5	13.0	13.1	13.8	14.0	14.2	13.9	13.3	12.8	12.2	12.0	12.4
Male	14.9	15.2	16.7	16.4	17.4	17.5	17.6	17.6	18.0	17.5	17.5	16.6	15.5	15.0	14.5	14.4	15.1
Female	9.2	8.7	9.1	9.7	9.7	9.5	9.9	10.1	10.9	11.6	11.9	12.2	11.9	11.3	10.5	10.3	10.6
Black	31.1	31.8	30.6	28.1	27.2	27.4	28.5	31.1	32.2	32.8	31.8	30.2	27.6	25.7	26.0	26.6	27.2
Male	38.7	35.8	39.0	37.4	36.6	35.3	39.7	41.8	42.5	40.8	40.0	38.3	33.2	30.2	32.7	33.8	34.7
Female	26.1	28.9	25.7	22.4	21.9	23.5	22.2	25.1	26.5	27.5	26.6	25.7	16.0	16.4	16.6	15.7	16.0
Septicemia																	
White	13.8	14.0	14.5	14.4	14.7	13.9	13.1	12.2	12.2	11.5	10.9	10.8	10.6	10.8	11.0	11.2	11.6
Male	16.0	16.0	16.7	15.8	16.5	15.5	14.9	14.3	14.0	12.6	12.1	12.1	11.3	12.0	12.6	12.5	13.0
Female	12.7	12.9	13.4	13.6	13.6	12.9	11.9	10.7	11.0	10.8	10.1	9.8	10.3	10.0	9.9	10.5	10.7
Black	25.9	28.7	28.1	28.9	25.7	24.6	23.2	21.9	19.9	19.7	18.1	15.9	15.7	15.3	14.7	15.7	15.6
Male	32.7	34.0	31.8	33.7	28.1	25.1	23.4	21.7	19.1	18.6	17.3	15.8	16.7	14.8	15.5	17.7	18.6
Female	22.1	25.7	26.3	26.1	23.9	24.6	23.2	21.9	20.3	20.3	18.3	15.9	12.8	13.2	12.2	12.9	11.8
Intentional self-harm (suicide)																	
White	12.8	12.9	12.3	13.0	12.9	12.6	12.0	12.5	12.5	12.7	13.3	13.7	14.3	14.7	15.4	15.4	15.4
Male	21.9	21.8	21.1	21.7	21.0	21.0	19.9	19.8	20.2	20.6	21.4	21.8	23.1	23.4	24.6	24.2	24.7
Female	4.4	4.7	4.4	5.1	5.5	5.0	4.8	5.7	5.3	5.3	5.5	5.9	5.8	6.5	6.7	7.1	6.8
Black	4.1	4.8	5.1	4.9	5.6	6.1	5.2	4.6	5.4	5.6	5.4	5.3	5.8	5.1	4.2	5.5	5.7
Male	7.7	8.9	10.0	9.3	10.1	10.8	9.9	8.2	9.5	10.8	10.3	9.7	10.2	9.5	7.3	8.5	9.3
Female	---	---	---	---	---	---	---	---	---	---	---	---	---	---	---	---	---
Chronic liver disease and cirrhosis																	
White	9.5	9.0	9.5	10.0	10.0	9.8	9.7	9.0	8.6	8.8	9.0	9.1	9.1	8.7	8.9	9.3	9.2
Male	12.6	11.8	11.6	12.1	11.5	11.8	12.4	11.8	11.7	12.5	12.9	13.0	13.3	12.8	12.8	13.3	12.4
Female	6.7	6.5	7.7	8.1	8.5	8.0	7.2	6.6	5.7	5.5	5.4	5.5	5.1	4.9	5.3	5.6	6.2
Black	8.6	9.1	9.0	9.5	9.3	8.2	7.3	6.6	6.4	6.3	7.0	7.0	6.9	6.4	6.3	6.2	5.6
Male	12.1	12.2	12.8	14.0	14.5	12.1	12.2	10.9	11.0	9.9	11.5	12.0	11.1	10.0	10.4	9.4	7.2
Female	---	6.4	---	5.8	---	---	---	---	---	---	---	---	---	---	---	5.5	6.0
Assault (homicide)																	
White	2.4	2.2	2.2	2.0	2.1	2.6	2.5	2.4	2.9	3.0	3.0	3.2	3.3	3.2	3.0	2.7	2.6
Male	2.9	2.7	2.6	2.5	2.5	3.5	3.4	3.3	4.1	4.1	4.1	4.4	4.8	4.4	4.2	3.7	3.7
Female	1.9	1.7	1.8	1.6	1.7	1.7	1.5	1.5	1.7	1.9	1.9	2.0	1.9	2.0	1.9	1.8	1.5
Black	11.7	9.0	9.0	8.9	9.8	11.3	13.5	14.1	16.2	16.2	16.5	15.2	16.3	15.2	16.7	18.0	19.3
Male	18.2	14.4	15.0	15.9	16.9	20.2	24.6	25.8	30.1	30.7	31.1	28.7	30.5	28.0	30.6	33.3	34.8
Female	5.7	---	---	---	---	---	---	---	---	---	---	---	---	---	---	---	7.3

See footnotes at the end of the table

TABLE F-32. FIVE-YEAR AGE-ADJUSTED MORTALITY RATES FOR SELECTED LEADING CAUSES OF DEATH BY RACE AND SEX, DELAWARE, 1995-2016 - CONTINUED

Cause of Death/ Race-Sex	1996 -2000	1997 -2001	1998 -2002	1999 -2003	2000 -2004	2001 -2005	2002 -2006	2003 -2007	2004 -2008	2005 -2009	2006 -2010	2007 -2011	2008 -2012	2009 -2013	2010 -2014	2011 -2015	2012 -2016
Certain conditions originating in the perinatal period																	
White	4.2	5.1	5.8	6.2	6.2	5.7	5.1	4.8	4.5	4.2	3.6	3.4	3.2	2.7	3.0	3.6	3.6
Male	4.7	5.7	6.3	6.9	6.5	5.9	5.3	5.4	5.1	5.1	4.4	4.2	4.1	3.3	3.8	4.2	4.1
Female	3.7	4.5	5.4	5.5	5.8	5.5	4.8	4.2	3.9	3.4	2.8	2.6	2.3	2.1	2.3	3.1	3.2
Black	14.7	16.7	16.6	16.2	15.1	16.4	14.9	14.6	14.2	15.0	13.2	13.1	13.3	12.5	10.7	11.2	10.7
Male	16.8	18.8	19.0	18.9	17.1	19.1	16.8	15.7	14.8	16.0	13.8	13.4	14.2	14.6	12.0	12.6	12.6
Female	12.5	14.5	14.1	13.4	13.2	13.8	13.1	13.4	13.5	14.0	12.6	12.7	12.5	10.4	9.4	9.8	8.8
Congenital malformations																	
White	4.0	3.7	3.3	3.3	3.3	3.1	3.1	2.8	2.8	2.6	3.0	3.0	3.1	3.3	3.1	2.8	2.6
Male	4.2	3.7	3.6	3.9	3.7	3.3	3.3	3.0	2.7	2.4	2.9	2.8	2.8	3.0	2.8	2.5	2.6
Female	3.9	3.7	3.1	2.7	2.9	2.8	2.8	2.7	2.8	2.8	3.1	3.3	3.4	3.6	3.4	3.1	2.6
Black	3.5	3.9	4.0	3.6	3.7	3.6	3.3	2.9	3.0	2.6	2.5	2.4	2.5	2.1	2.4	2.9	3.0
Male	4.2	3.7	3.6	3.9	3.7	3.3	3.3	3.0	2.7	2.4	2.9	2.8	2.8	3.0	2.8	2.5	2.6
Female	3.9	3.7	3.1	2.7	2.9	2.8	2.8	2.7	2.8	2.8	3.1	3.3	3.4	3.6	3.4	3.1	2.6
Human immunodeficiency virus (HIV)																	
White	3.0	2.0	2.2	2.6	2.5	2.4	2.3	2.1	2.0	1.8	1.8	1.7	1.5	1.2	1.2	1.0	1.0
Male	5.4	3.6	3.7	4.4	3.9	3.6	3.5	3.5	3.0	2.9	2.8	2.7	2.1	1.8	1.8	1.7	1.4
Female	---	---	---	---	---	---	---	---	---	---	---	---	---	---	---	---	---
Black	42.0	36.4	35.6	36.4	35.5	34.3	31.5	29.4	26.3	24.1	21.6	19.6	17.6	15.9	15.1	13.2	11.3
Male	66.9	56.7	55.8	54.8	52.6	51.3	46.1	40.0	32.7	29.5	26.7	25.4	24.2	24.8	23.1	19.2	15.6
Female	20.9	19.2	18.5	21.1	21.3	20.2	19.5	20.7	21.5	19.9	17.6	15.0	20.3	14.0	13.5	13.3	12.7
Accidents (unintentional injuries)																	
White	37.3	38.2	37.5	37.2	37.5	37.4	38.0	38.3	39.9	40.6	41.5	41.7	42.6	43.0	45.1	46.7	51.1
Male	50.1	50.9	50.6	51.4	51.5	51.8	53.2	54.5	55.7	57.1	57.0	57.0	57.4	57.3	59.9	62.8	69.9
Female	25.4	26.5	25.6	24.3	24.7	24.2	24.0	23.3	25.1	25.2	27.1	27.5	28.9	29.9	31.3	31.6	33.2
Black	34.2	36.2	37.5	37.3	35.2	32.1	29.6	26.4	24.2	24.6	26.1	24.4	25.4	26.5	27.7	29.5	33.9
Male	53.0	52.8	56.6	56.0	50.3	47.0	44.3	38.2	34.4	35.7	37.2	35.2	37.6	39.2	40.6	43.1	50.9
Female	18.6	22.0	21.1	21.7	21.9	19.7	17.6	16.6	15.4	15.4	16.5	14.9	19.8	19.8	20.8	22.8	24.5
Essential hypertension and hypertensive renal disease																	
White	4.2	4.5	5.0	5.1	5.7	6.0	5.7	5.2	4.8	4.4	4.3	4.3	4.2	4.6	4.2	4.0	4.0
Male	4.3	4.4	4.7	5.0	5.3	5.6	5.5	4.8	4.4	4.5	4.2	3.8	3.8	4.2	3.6	3.8	4.2
Female	4.0	4.3	5.0	5.0	5.8	6.1	5.7	5.4	4.8	4.3	4.2	4.4	4.2	4.7	4.4	4.0	3.7
Black	10.0	10.5	11.4	12.2	15.4	16.4	15.2	14.3	14.5	11.6	9.8	9.1	8.6	7.4	7.4	7.3	8.1
Male	12.9	13.1	11.8	14.2	19.8	20.4	19.5	20.2	18.1	12.0	10.4	10.1	9.4	8.0	8.6	7.5	8.4
Female	8.1	9.2	10.9	11.0	13.1	14.3	12.5	10.3	11.7	10.4	8.4	7.6	3.5	3.8	4.5	4.9	5.7
Aortic aneurysm and dissection																	
White	6.5	6.8	6.4	6.8	6.3	5.8	5.0	4.4	3.7	3.4	3.2	3.2	3.3	3.0	3.0	2.9	2.8
Male	10.4	11.3	10.0	9.6	8.8	8.3	6.9	6.2	5.5	5.1	4.7	4.4	4.3	3.8	3.9	3.8	3.9
Female	4.0	3.9	4.2	4.8	4.4	4.0	3.6	2.9	2.3	2.1	1.9	2.2	2.4	2.4	2.2	2.2	2.0
Black	5.0	5.0	5.5	6.0	6.9	6.4	5.4	5.1	4.1	3.7	3.6	3.4	3.2	3.8	3.4	3.0	3.5
Male	---	---	---	---	---	---	---	---	---	---	---	---	---	---	---	---	---
Female	---	---	---	---	7.0	6.6	---	---	---	---	---	---	---	---	---	---	---

See footnotes at the end of the table

TABLE F-32. FIVE-YEAR AGE-ADJUSTED MORTALITY RATES FOR SELECTED LEADING CAUSES OF DEATH BY RACE AND SEX, DELAWARE, 1995-2016 - CONTINUED

Cause of Death/ Race-Sex	1996 -2000	1997 -2001	1998 -2002	1999 -2003	2000 -2004	2001 -2005	2002 -2006	2003 -2007	2004 -2008	2005 -2009	2006 -2010	2007 -2011	2008 -2012	2009 -2013	2010 -2014	2011 -2015	2012 -2016
Pneumonitis due to solids and liquids																	
White	7.5	8.5	8.9	9.4	8.6	7.8	6.8	6.1	5.4	5.1	4.8	4.7	4.4	4.3	4.2	4.7	4.9
Male	10.5	11.8	11.5	11.6	10.5	9.5	7.9	7.4	6.4	6.3	6.1	6.2	6.2	6.5	6.5	7.0	7.3
Female	5.8	6.7	7.3	8.0	7.4	6.8	5.9	5.2	4.6	4.3	3.8	3.7	3.3	2.9	2.6	3.2	3.3
Black	10.5	11.3	10.4	11.7	10.6	10.7	9.0	8.1	5.6	5.5	4.4	3.9	3.2	4.2	4.6	3.9	4.5
Male	15.4	19.8	17.9	19.9	18.5	18.0	15.2	12.9	---	---	9.1	---	---	7.9	8.4	---	7.3
Female	---	---	---	6.8	---	6.7	---	---	---	---	---	---	---	---	---	---	---
Other diseases of respiratory system																	
White	8.5	8.6	8.8	8.5	8.9	8.6	9.1	9.0	9.0	8.7	8.6	8.8	9.4	9.6	9.7	9.4	9.3
Male	10.6	10.2	9.8	9.7	10.1	10.1	11.3	11.0	10.4	10.3	10.2	9.9	11.4	12.1	12.1	11.7	11.4
Female	7.0	7.3	8.1	7.8	8.1	7.7	7.7	7.5	8.0	7.6	7.5	7.9	7.9	7.7	7.8	7.7	7.8
Black	6.9	7.1	7.9	7.3	7.4	7.1	7.0	7.4	9.3	9.8	10.1	10.4	9.2	7.6	8.4	8.5	7.6
Male	---	---	---	---	9.1	10.5	9.6	9.7	11.4	12.7	13.7	14.6	13.1	12.3	13.3	11.6	10.3
Female	7.9	8.2	7.7	6.5	6.4	---	5.5	5.9	8.0	8.3	8.2	8.0	7.1	5.4	4.6	4.7	3.7
Parkinson's disease																	
White	5.0	5.5	6.0	5.9	5.9	6.1	5.8	6.0	6.1	6.0	5.7	6.2	6.4	6.9	7.2	7.5	7.2
Male	6.8	8.0	8.5	8.7	8.9	9.1	8.8	9.0	8.8	8.4	8.0	8.0	8.2	9.1	9.9	10.1	10.3
Female	3.9	4.2	4.6	4.3	4.2	4.4	4.1	4.2	4.5	4.6	4.4	5.1	5.2	5.4	5.4	5.6	5.0
Black	---	---	---	---	---	---	---	---	---	---	---	---	---	---	---	3.3	3.0
Male	---	---	---	---	---	---	---	---	---	---	---	---	---	---	---	---	---
Female	---	---	---	---	---	---	---	---	---	---	---	---	---	---	---	---	---
Dementia																	
White	6.6	7.4	8.6	9.5	10.1	11.8	15.5	18.8	23.9	29.3	34.0	36.2	39.1	38.5	38.1	36.8	35.4
Male	7.9	7.8	7.9	8.3	8.7	9.4	12.8	15.6	20.0	24.9	29.3	31.1	33.9	33.8	33.8	31.7	30.3
Female	6.1	7.2	8.9	10.1	10.9	13.0	16.9	20.5	25.8	31.6	36.4	38.9	41.5	40.7	40.2	39.5	38.0
Black	6.0	5.8	8.7	10.4	15.4	16.3	23.1	30.1	34.3	37.1	40.4	41.8	41.9	41.2	41.9	42.0	41.7
Male	---	---	19.0	18.2	22.5	22.3	29.6	29.2	35.4	40.8	42.3	40.2	41.1	42.0	41.6	42.3	43.9
Female	---	---	---	---	12.5	13.5	20.1	30.2	33.8	34.9	39.1	42.3	41.8	40.0	41.6	41.3	40.2

Notes:

1. Rates per 100,000, adjusted to U.S. 2000 population.
2. See Appendix E for ICD-9 and ICD-10 cause of death codes.
3. "---" indicates rate does not meet standards of reliability or precision; based on fewer than 20 deaths in the numerator.

Source: Delaware Department of Health and Social Services, Division of Public Health, Delaware Health Statistics Center