



# DELAWARE VITAL STATISTICS ANNUAL REPORT POPULATION, 2015

*Suggested Citation:*

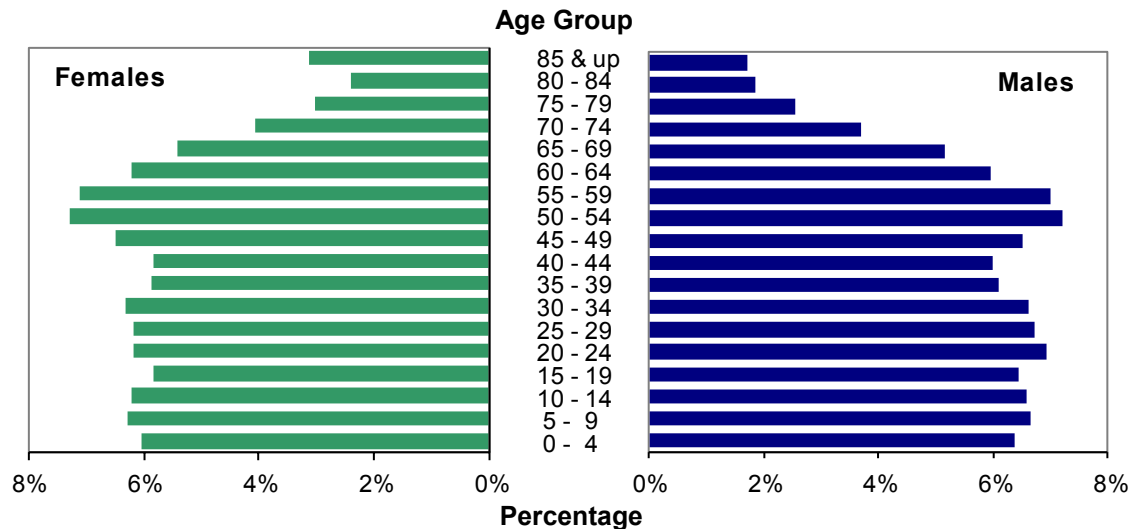
Delaware Health Statistics Center. *Delaware Vital Statistics Annual Report, 2015.*

Delaware Health and Social Services, Division of Public Health: 2017.

## POPULATION

In 2015 just over 51 percent of Delaware's population was female. Females made up a greater proportion of the older age groups, which reflects the longer female life expectancy. In 2015, Delaware females could expect to live an average of 81.9 years versus males who could expect to live 76.5 years.

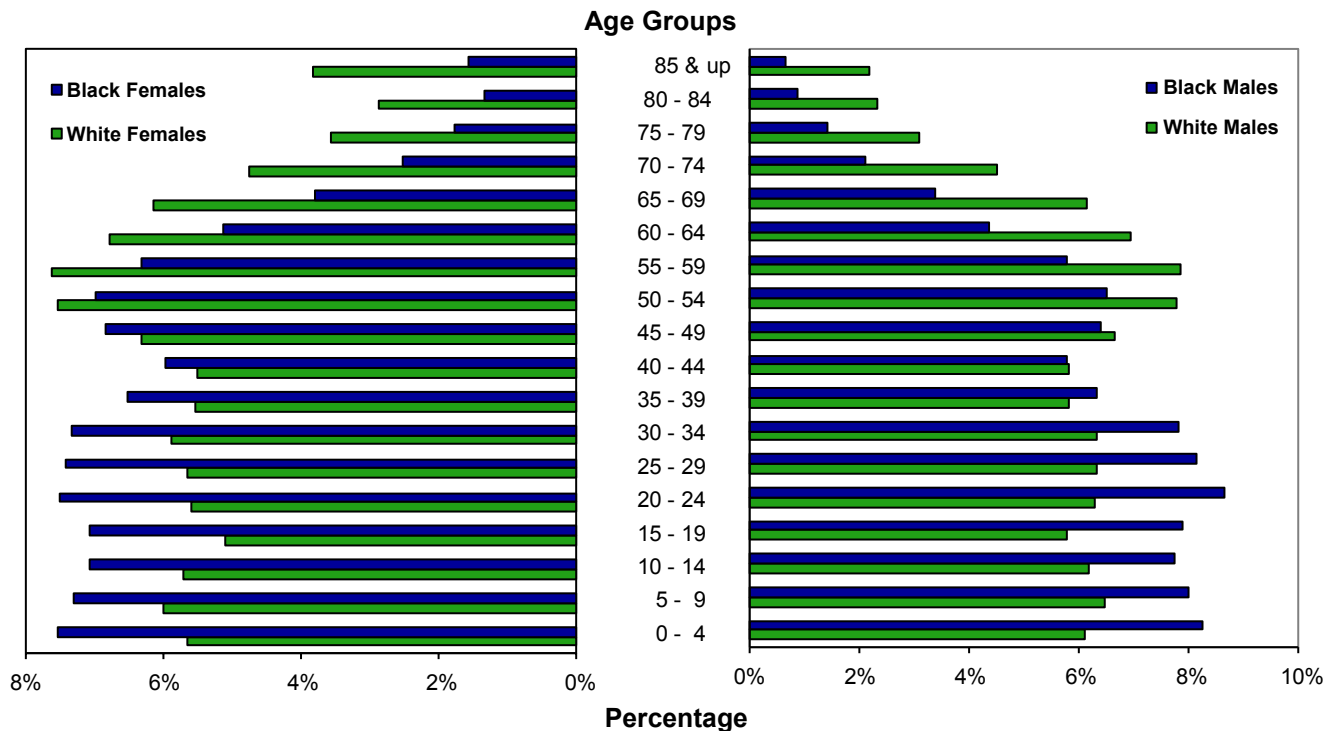
**Figure 3. Population by Gender and Age, Delaware, 2015**



Source: Delaware Health and Social Services, Division of Public Health, Delaware Health Statistics Center

When the population was broken down by race, the highest proportion of females in the older age groups appeared in the white population. However, both black males and females had a greater percentage of their population in the 0-39 year age range than whites males and females. In the 50 and above age range, whites made up a greater proportion of the population.

**Figure 4. Population by Gender and Race, Delaware, 2015**



Source: Delaware Health and Social Services, Division of Public Health, Delaware Health Statistics Center

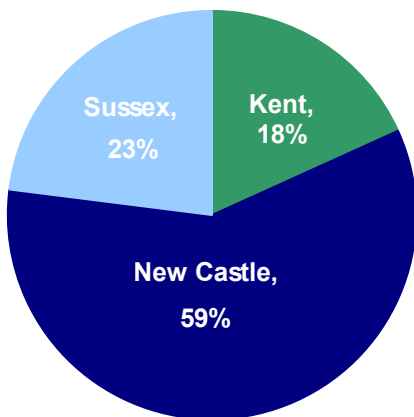
## POPULATION

Delaware's three counties continued their increasing population trend, though they grew at different rates. Between 2000 and 2015, county populations grew annually by 2.4 percent for Kent, 0.7 percent for New Castle, and 2.5 percent for Sussex. Delaware's statewide increase was 1.3 percent.

In 2015, just over half of Delaware's 65 and older population resided in New Castle County. However, residents 65 and older represented a much larger proportion of the Sussex County population, where one in four residents was 65 or older, versus New Castle and Kent counties, where approximately one in seven residents was 65 or older.

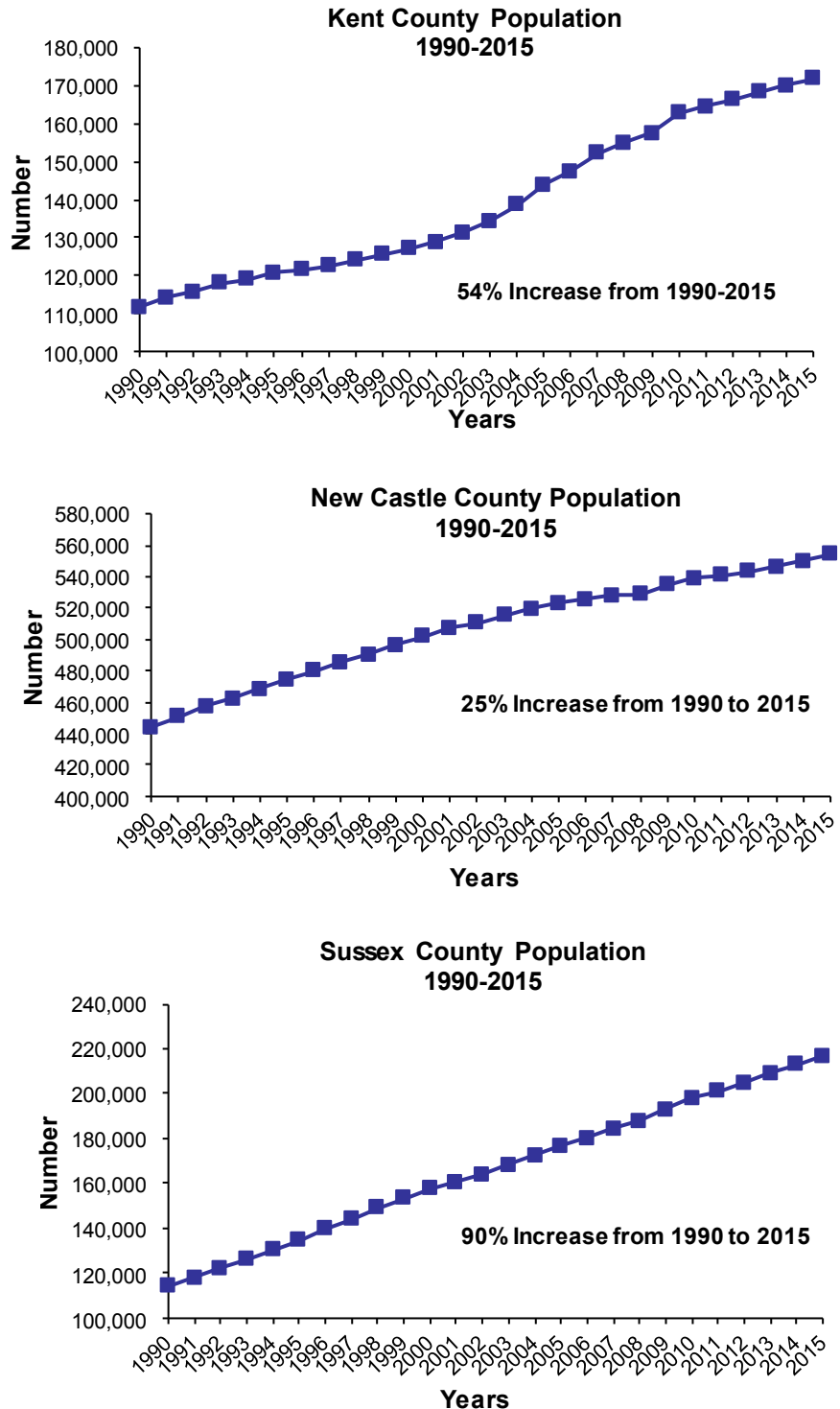
Over half of Delaware's total population resides in New Castle County.

**Figure 6. Percent of Population by County, Delaware, 2015**



Source: Delaware Health and Social Services, Division of Public Health, Health Statistics Center

**Figure 5. Delaware Resident Population by County, 1990-2015**



Source: Delaware Health and Social Services, Division of Public Health, Health Statistics Center

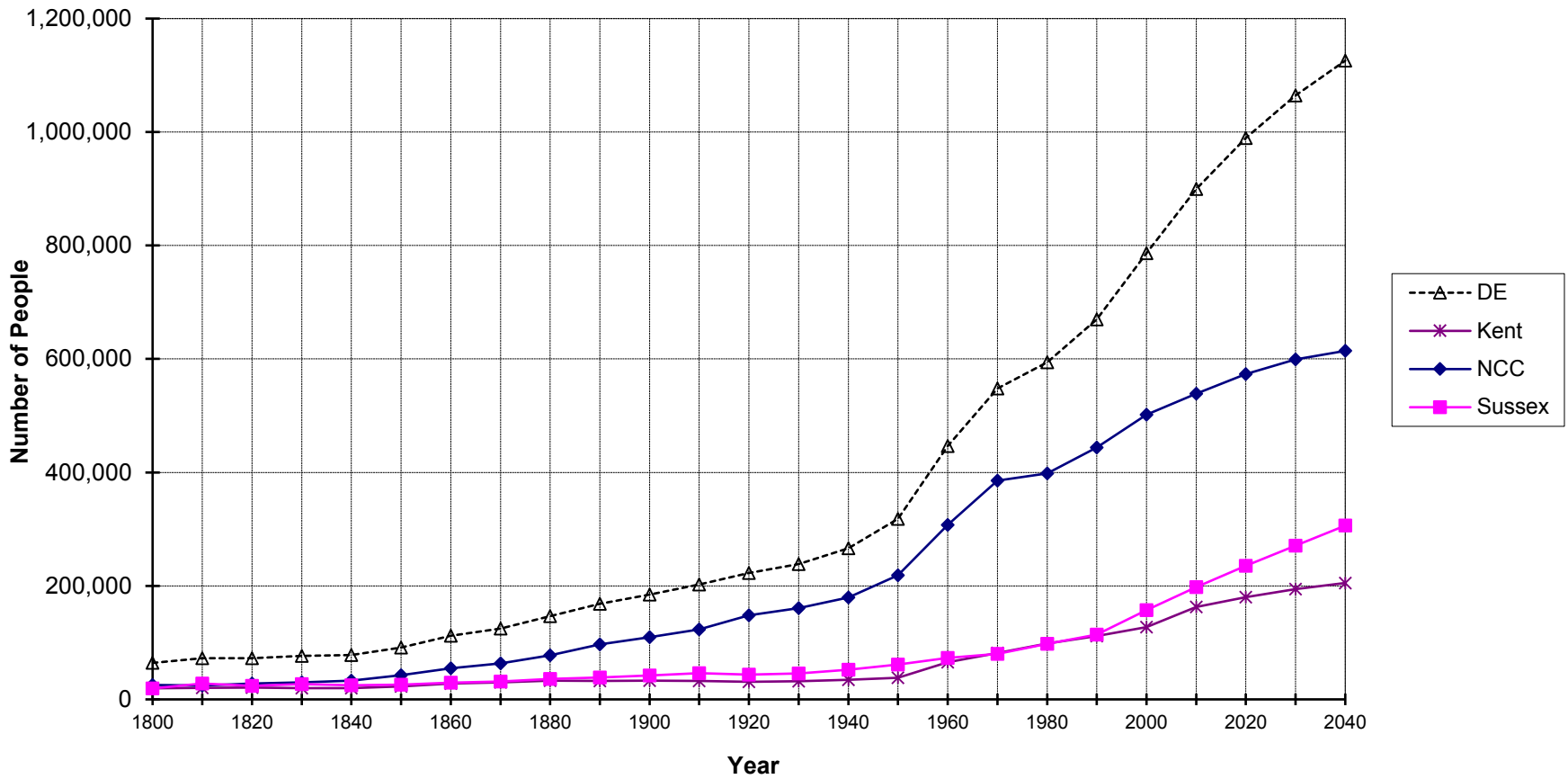
**TABLE A-1. PERCENT CHANGE IN POPULATION BY SEX, COUNTY, CITY OF DOVER, CITY OF NEWARK, CITY OF WILMINGTON, AND DELAWARE, 1970-2020**

Area/ Sex	1970	1980	% Change 1970-1980	1990	% Change 1980-1990	2000	% Change 1990-2000	2010	% Change 2000-2010	2020*	% Change 2010-2020	% Change 2000-2020
<b>Delaware</b>	548104	594338	8.4	666168	12.1	786393	18.0	899773	14.4	989170	9.9	25.8
Male	267332	286599	7.2	322966	12.7	381690	18.2	437346	14.6	481410	10.1	26.1
Female	280772	307739	9.6	343202	11.5	404703	17.9	462427	14.3	507760	9.8	25.5
<b>Kent</b>	81892	98219	19.9	110993	13.0	127230	14.6	162916	28.0	180357	10.7	41.8
Male	41337	48254	16.7	54300	12.5	61325	12.9	78394	27.8	86714	10.6	41.4
Female	40555	49965	23.2	56693	13.5	65905	16.2	84522	28.2	93643	10.8	42.1
<b>Dover</b>	17488	23512	34.4	27630	17.5	32135	16.3	36063	12.2	40475	12.2	26.0
Male	8319	11695	40.6	13408	14.6	15114	12.7	16798	11.1	18606	10.8	23.1
Female	9169	11817	28.9	14222	20.4	17021	19.7	19266	13.2	21869	13.5	28.5
<b>New Castle</b>	385856	398115	3.2	441946	11.0	501846	13.6	538987	7.4	573239	6.4	14.2
Male	187124	191176	2.2	213869	11.9	243587	13.9	262091	7.6	278844	6.4	14.5
Female	198732	206939	4.1	228077	10.2	258259	13.2	276896	7.2	294395	6.3	14.0
<b>Newark</b>	20757	25247	21.6	26463	4.8	28457	7.5	31465	10.6	34790	10.6	22.3
Male	10242	11993	17.1	12408	3.5	13085	5.5	14695	12.3	16251	10.6	24.2
Female	10515	13254	26.0	14055	6.0	15372	9.4	16770	9.1	18539	10.5	20.6
<b>Wilmington</b>	80386	70195	-12.7	71529	1.9	72730	1.7	70839	-2.6	69634	-1.7	-4.3
Male	36968	31458	-14.9	33249	5.7	34759	4.5	34568	-0.5	34461	-0.3	-0.9
Female	43418	38737	-10.8	38280	-1.2	37971	-0.8	36271	-4.5	35173	-3.0	-7.4
<b>Sussex</b>	80356	98004	22.0	113229	15.5	157317	38.9	197870	25.8	235574	19.1	49.7
Male	38871	47169	21.3	54797	16.2	76778	40.1	96861	26.2	115852	19.6	50.9
Female	41485	50835	22.5	58432	14.9	80539	37.8	101009	25.4	119722	18.5	48.7

Note:\*Numbers for this year are projections.

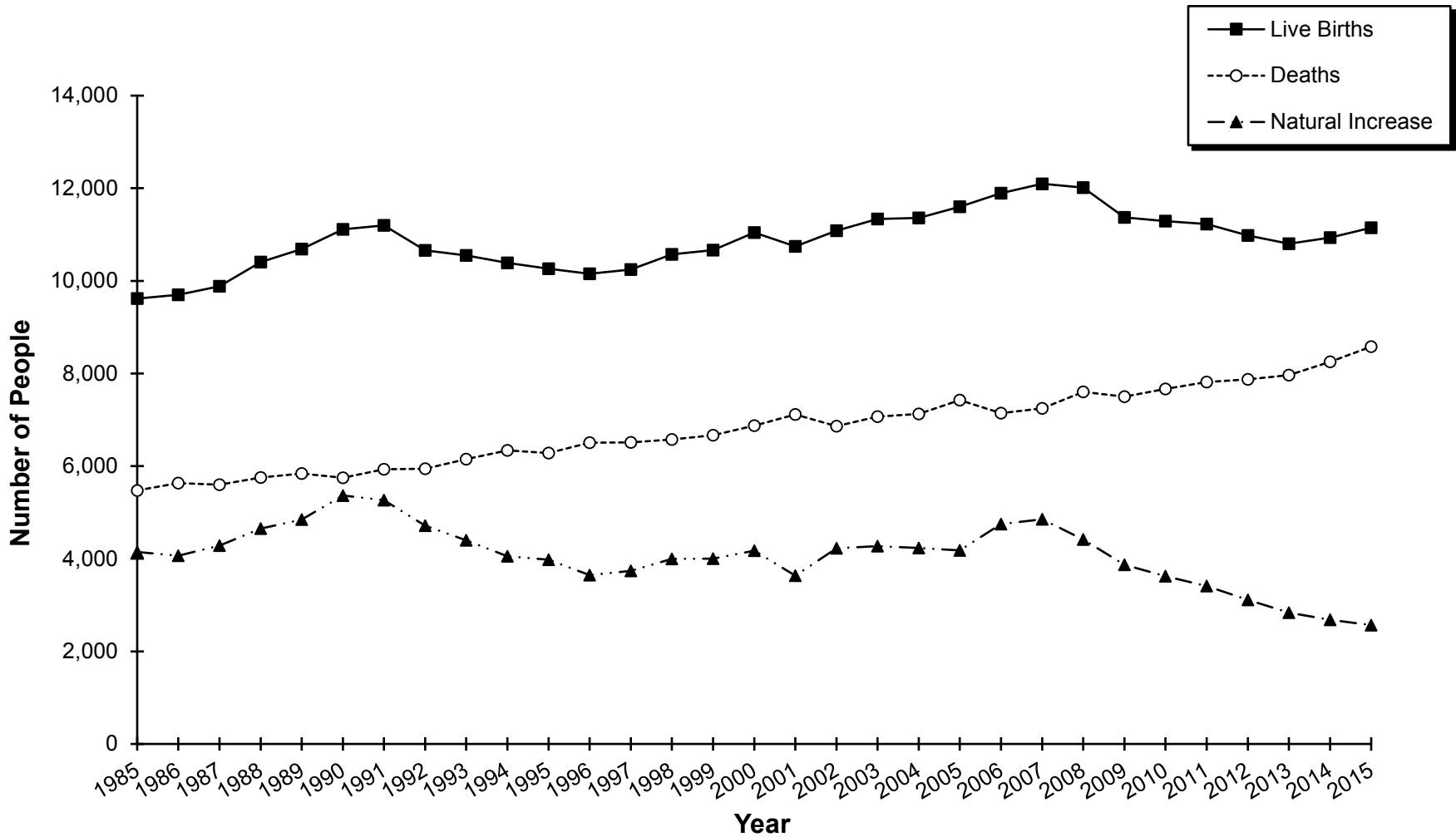
Sources: Delaware Health and Social Services, Division of Public Health, Delaware Health Statistics Center  
 Delaware Population Consortium  
 U.S. Bureau of the Census

**Figure A-1. Population Growth, Delaware and Counties, 1800-2040**



Sources: Delaware Health and Social Services, Division of Public Health, Delaware Health Statistics Center  
 Delaware Population Consortium

**Figure A-2. Live Births, Deaths, and Natural Increase, Delaware, 1985-2015**



Source: Delaware Health and Social Services, Division of Public Health, Delaware Health Statistics Center

**TABLE A-2. POPULATION ESTIMATES BY SEX, RACE, AGE, COUNTY, CITY OF DOVER, CITY OF NEWARK, CITY OF WILMINGTON, AND DELAWARE, 2015**

Area/ Sex/Race	Age																		
	Total	0-4	5-9	10-14	15-19	20-24	25-29	30-34	35-39	40-44	45-49	50-54	55-59	60-64	65-69	70-74	75-79	80-84	85+
<b>Delaware</b>	943107	58545	60990	60279	57822	61793	60846	61013	56406	55640	61319	68546	66604	57444	49798	36562	26330	20226	22944
Male	458778	29227	30460	30182	29535	31760	30838	30415	27903	27419	29926	33139	32148	27339	23611	16877	11638	8532	7829
White	323748	19284	20404	19492	18206	19871	20019	19911	18398	18322	21020	24524	24830	21887	19350	14194	9744	7378	6914
Black	100333	8257	8001	7750	7907	8663	8161	7824	6360	5797	6401	6528	5802	4394	3384	2121	1416	884	683
Female	484329	29318	30530	30097	28287	30033	30008	30598	28503	28221	31393	35407	34456	30105	26187	19685	14692	11694	15115
White	341430	19316	20438	19514	17404	19114	19325	20087	18880	18821	21510	25703	25982	23163	20926	16179	12172	9843	13053
Black	110408	8323	8071	7814	7813	8271	8190	8080	7203	6594	7537	7720	6963	5669	4203	2781	1968	1481	1727
<b>Kent</b>	171924	11590	11627	11518	11432	12043	12442	12166	10692	9963	10970	12584	11641	9218	7939	5717	4235	3190	2957
Male	82710	5787	5803	5747	5763	6194	6251	5973	5212	4654	5311	5995	5519	4257	3690	2564	1775	1319	896
White	57291	3969	3972	3890	3713	4040	4130	3754	3309	3220	3783	4373	4105	3209	2794	1987	1351	1003	689
Black	20459	1623	1605	1585	1592	1791	1720	1882	1486	1029	1134	1198	1077	859	703	466	320	237	152
Female	89214	5803	5824	5771	5669	5849	6191	6193	5480	5309	5659	6589	6122	4961	4249	3153	2460	1871	2061
White	60782	3970	3975	3895	3583	3869	4112	3848	3214	3511	3911	4643	4363	3534	3102	2379	1883	1401	1589
Black	22753	1638	1623	1604	1665	1586	1698	2008	1877	1320	1327	1461	1361	1087	858	561	408	329	342
<b>New Castle</b>	554243	34217	36502	36494	35647	38270	36603	37312	36107	35098	38196	40499	38146	31946	26546	18726	12717	9626	11591
Male	269629	17066	18210	18230	18269	19601	18681	18471	17678	17487	18624	19714	18455	15071	12384	8481	5573	3888	3746
White	179672	10280	11384	11389	10737	11707	11531	11771	11550	11178	12472	13863	13511	11361	9506	6705	4338	3205	3184
Black	66889	5498	5272	5143	5268	5755	5346	4896	4086	4108	4477	4486	3983	3001	2313	1397	920	526	414
Female	284614	17701	18135	17441	18667	18667	16799	20537	16391	19403	20426	20674	18316	15835	12180	8714	6805	5797	7353
White	189285	10320	11440	11443	10176	11293	10828	12086	12251	11113	12570	14219	14010	12194	10644	7962	5531	4631	6574
Black	73698	5548	5320	5180	5181	5598	5363	5048	4541	4621	5346	5322	4735	3881	2840	1862	1287	926	1099
Wilmington*	70233	5535	5116	4827	4162	5168	5668	5553	4820	4649	4413	4393	4175	3563	2903	1967	1286	954	1081
Male	34544	2826	2623	2480	2182	2638	2858	2841	2517	2411	2248	2207	2005	1636	1248	795	465	303	261
White	12292	780	737	721	503	742	1095	1149	1013	1059	802	764	774	653	559	399	216	163	163
Black	19379	1791	1669	1566	1449	1606	1468	1377	1239	1159	1280	1312	1142	897	620	356	225	132	91
Female	35689	2709	2493	2347	1980	2530	2810	2712	2303	2238	2165	2186	2170	1927	1655	1172	821	651	820
White	11900	731	672	616	419	621	946	976	775	853	641	643	715	767	751	567	378	318	511
Black	21156	1730	1615	1553	1398	1646	1584	1456	1361	1197	1368	1415	1360	1062	832	556	410	317	296
<b>Sussex</b>	216940	12738	12861	12267	10743	11480	11801	11535	9607	10579	12153	15463	16817	16280	15313	12119	9378	7410	8396
Male	106439	6374	6447	6205	5503	5965	5906	5971	5013	5278	5991	7430	8174	8011	7537	5832	4290	3325	3187
White	86785	5035	5048	4213	3756	4124	4358	4386	3539	3924	4765	6288	7214	7317	7050	5502	4055	3170	3041
Black	12985	1136	1124	1022	1047	1117	1095	1046	788	660	790	844	742	534	368	258	176	121	117
Female	110501	6364	6414	6062	5240	5515	5895	5564	4594	5301	6162	8033	8643	8269	7776	6287	5088	4085	5209
White	91363	5026	5023	4176	3645	3952	4385	4153	3415	4197	5029	6841	7609	7435	7180	5838	4758	3811	4890
Black	13957	1137	1128	1030	967	1087	1129	1024	785	653	864	937	867	701	505	358	273	226	286

Sources: Delaware Health and Social Services, Division of Public Health, Delaware Health Statistics Center  
Delaware Population Consortium