

DELAWARE VITAL STATISTICS ANNUAL REPORT REPORTED PREGNANCIES, 2014



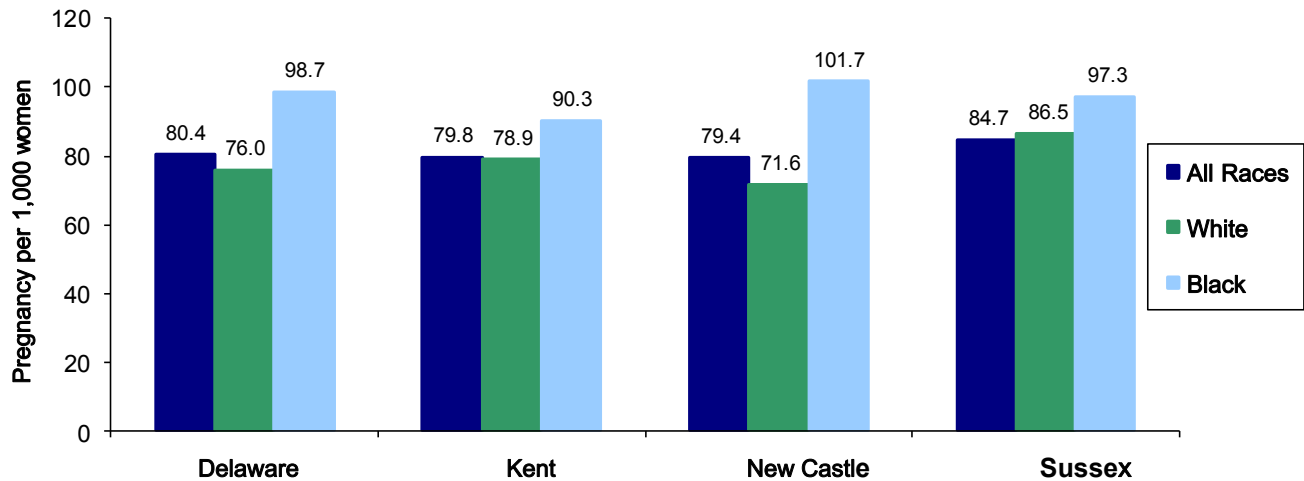
Suggested Citation:

Delaware Health Statistics Center. *Delaware Vital Statistics Annual Report, 2014*.
Delaware Health and Social Services, Division of Public Health: 2017.

REPORTED PREGNANCIES

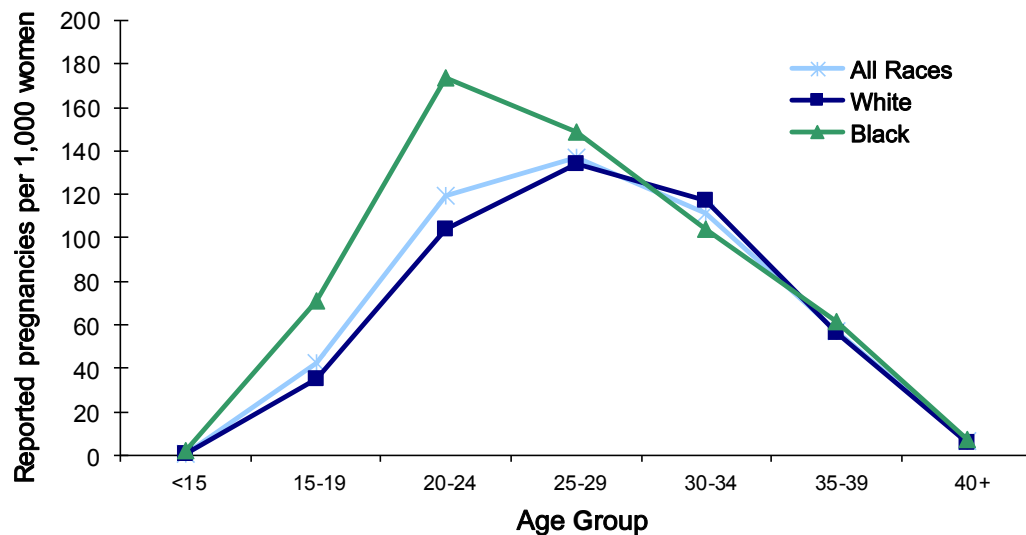
At 80 reported pregnancies per 1,000 women ages 15-44, the 2010-2014 rate of reported pregnancies remained stable. Although pregnancy rates of black mothers were significantly higher than those of white mothers in every county, the largest difference between the pregnancy rate of white (71.6 percent) and black (101.7 percent) mothers occurred in New Castle County.

**Five-year Average Rate of Reported Pregnancies by Race
Delaware and Counties, 2010-2014**



Source: Delaware Health and Social Services, Division of Public Health, Delaware Health Statistics Center

**Five-year Average Rate of Reported Pregnancies
by Age and Race, Delaware, 2010-2014**



Source: Delaware Health and Social Services, Division of Public Health, Delaware Health Statistics Center

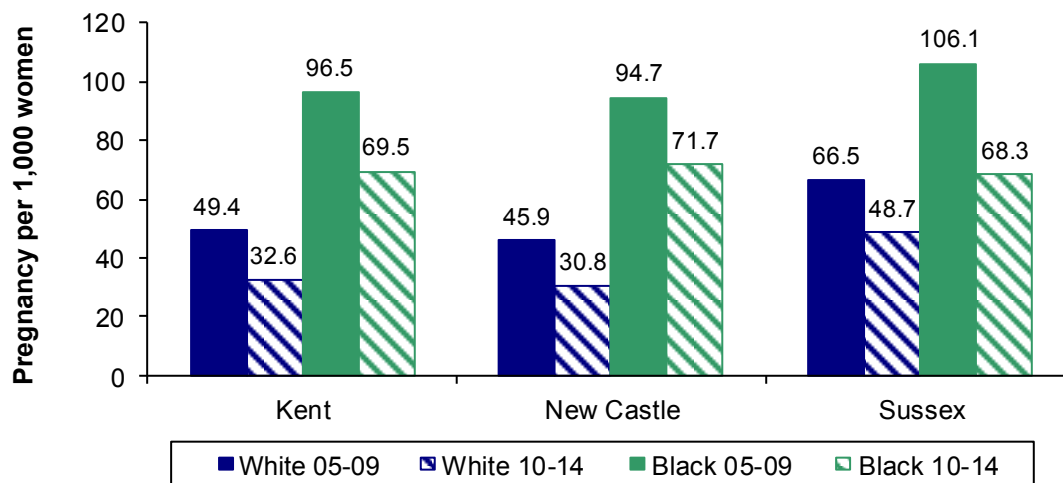
For women of all races, the 25-29 year age group had the highest pregnancy rate, at 137 pregnancies per 1,000 women in 2010-2014.

Black women had higher pregnancy rates than white women in all age groups except the 30-34 age group.

REPORTED PREGNANCIES

In Kent and New Castle counties, the teen (15-19) pregnancy rates for all races declined between 2005-2009 and 2010-2014. Although all three counties had a significant decline in the black teen pregnancy rate, Sussex County's black teen pregnancy rate showed the greatest decline from 106.1 in 2005-2009 to 68.3 in 2010-2014. White teens in New Castle County had the lowest reported pregnancy rate at 30.8 pregnancies per 1,000 women in 2010-2014.

Five-year Average Teenage (15-19) Pregnancy Rates by County and Race, Delaware, 2005-2009 and 2010-2014



Source: Delaware Health and Social Services, Division of Public Health, Delaware Health Statistics Center

- ▶ The five-year average (2010-2014) pregnancy rate for younger teens aged 15-17 was lowest in Kent County, with 19.6 pregnancies per 1,000 females, followed by New Castle County with a rate of 22.1, and Sussex County with a rate of 23.8 (see Table D-8). The rates decreased in all three counties between 2009-2013 to 2010-2014.
- ▶ The five-year average (2010-2014) pregnancy rate for older teens aged 18-19 was lowest in New Castle County (68.2 pregnancies per 1,000 females), and highest in Sussex County (86.1). See Table D-8.
- ▶ In 2014, there were 2,937 abortions performed in Delaware: 2,468 to Delaware residents and 469 to non-residents.
 - One half of all pregnancies to females under 15 ended in termination.
 - ⇒ 75 percent of pregnancies to white females under 15, and 41.7 percent of pregnancies to black females under 15, ended in terminations.
 - Married women undergo significantly fewer terminations than their single counterparts.
 - 3.2 percent of pregnancies to white married women ended in termination and 8.7 percent of pregnancies to black married women ended in termination.

When the women were unmarried, these numbers increased to 26 percent among white women and 34.1 percent among black women.
- There were 59 fetal deaths of Delaware residents in 2014.
- There were 10,934 live births to Delaware residents in 2014.

TABLE D-1
NUMBER AND PERCENT OF REPORTED PREGNANCIES BY AGE OF WOMAN
DELAWARE AND COUNTIES, 2014

Area/ Age	Reported Pregnancies							
	Total		Live Births		Fetal Deaths		Induced Terminations	
	Number	Percent	Number	Percent	Number	Percent	Number	Percent
Delaware	13461	100.0	10934	81.2	59	0.4	2468	18.3
<15	18	100.0	9	50.0	0	0.0	9	50.0
15-19	926	100.0	612	66.1	7	0.8	307	33.2
15-17	273	100.0	168	61.5	3	1.1	102	37.4
18-19	653	100.0	444	68.0	4	0.6	205	31.4
20-24	3156	100.0	2298	72.8	18	0.6	840	26.6
25-29	3924	100.0	3297	84.0	15	0.4	612	15.6
30-34	3508	100.0	3085	87.9	12	0.3	411	11.7
35-39	1525	100.0	1305	85.6	6	0.4	214	14.0
40+	404	100.0	328	81.2	1	0.2	75	18.6
Unknown	0	...	0	...	0	...	0	...
Kent	2683	100.0	2266	84.5	6	0.2	411	15.3
<15	3	100.0	2	66.7	0	0.0	1	33.3
15-19	169	100.0	127	75.1	2	1.2	40	23.7
15-17	44	100.0	29	65.9	0	0.0	15	34.1
18-19	125	100.0	98	78.4	2	1.6	25	20.0
20-24	754	100.0	608	80.6	2	0.3	144	19.1
25-29	844	100.0	726	86.0	1	0.1	117	13.9
30-34	631	100.0	554	87.8	1	0.2	76	12.0
35-39	231	100.0	207	89.6	0	0.0	24	10.4
40+	51	100.0	42	82.4	0	0.0	9	17.6
Unknown	0	...	0	...	0	...	0	...
New Castle	8153	100.0	6450	79.1	36	0.4	1667	20.4
<15	11	100.0	5	45.5	0	0.0	6	54.5
15-19	540	100.0	318	58.9	3	0.6	219	40.6
15-17	172	100.0	93	54.1	2	1.2	77	44.8
18-19	368	100.0	225	61.1	1	0.3	142	38.6
20-24	1729	100.0	1157	66.9	10	0.6	562	32.5
25-29	2285	100.0	1887	82.6	11	0.5	387	16.9
30-34	2273	100.0	1987	87.4	9	0.4	277	12.2
35-39	1026	100.0	868	84.6	3	0.3	155	15.1
40+	289	100.0	228	78.9	0	0.0	61	21.1
Unknown	0	...	0	...	0	...	0	...
Sussex	2625	100.0	2218	84.5	17	0.6	390	14.9
<15	4	100.0	2	50.0	0	0.0	2	50.0
15-19	217	100.0	167	77.0	2	0.9	48	22.1
15-17	57	100.0	46	80.7	1	1.8	10	17.5
18-19	160	100.0	121	75.6	1	0.6	38	23.8
20-24	673	100.0	533	79.2	6	0.9	134	19.9
25-29	795	100.0	684	86.0	3	0.4	108	13.6
30-34	604	100.0	544	90.1	2	0.3	58	9.6
35-39	268	100.0	230	85.8	3	1.1	35	13.1
40+	64	100.0	58	90.6	1	1.6	5	7.8
Unknown	0	...	0	...	0	...	0	...

PRAGECTY

Notes:

1. Percentages may not add to 100% due to rounding.
2. Percentages are calculated based upon the total number of pregnancies within each area-age category.
3. Percentages for the age categories "<15" and "40+" may be misleading due to the small number of pregnancies in this category.

Source: Delaware Health and Social Services, Division of Public Health, Delaware Health Statistics Center

TABLE D-2
NUMBER AND PERCENT OF REPORTED PREGNANCIES BY RACE, HISPANIC ORIGIN, AND AGE OF WOMAN

DELAWARE, 2014

Race- Hispanic Origin/ Age	Reported Pregnancies							
	Total		Live Births		Fetal Deaths		Induced Terminations	
	Number	Percent	Number	Percent	Number	Percent	Number	Percent
All Races	13461	100.0	10934	81.2	59	0.4	2468	18.3
<15	18	100.0	9	50.0	0	0.0	9	50.0
15-19	926	100.0	612	66.1	7	0.8	307	33.2
15-17	273	100.0	168	61.5	3	1.1	102	37.4
18-19	653	100.0	444	68.0	4	0.6	205	31.4
20-24	3156	100.0	2298	72.8	18	0.6	840	26.6
25-29	3924	100.0	3297	84.0	15	0.4	612	15.6
30-34	3508	100.0	3085	87.9	12	0.3	411	11.7
35-39	1525	100.0	1305	85.6	6	0.4	214	14.0
40+	404	100.0	328	81.2	1	0.2	75	18.6
Unknown	0	...	0	...	0	...	0	...
White	8391	100.0	7194	85.7	29	0.3	1168	13.9
<15	4	100.0	1	25.0	0	0.0	3	75.0
15-19	478	100.0	353	73.8	2	0.4	123	25.7
15-17	129	100.0	85	65.9	1	0.8	43	33.3
18-19	349	100.0	268	76.8	1	0.3	80	22.9
20-24	1790	100.0	1413	78.9	8	0.4	369	20.6
25-29	2523	100.0	2199	87.2	8	0.3	316	12.5
30-34	2349	100.0	2137	91.0	7	0.3	205	8.7
35-39	989	100.0	876	88.6	3	0.3	110	11.1
40+	258	100.0	215	83.3	1	0.4	42	16.3
Unknown	0	...	0	...	0	...	0	...
Black	4106	100.0	2920	71.1	30	0.7	1156	28.2
<15	12	100.0	7	58.3	0	0.0	5	41.7
15-19	411	100.0	237	57.7	5	1.2	169	41.1
15-17	135	100.0	77	57.0	2	1.5	56	41.5
18-19	276	100.0	160	58.0	3	1.1	113	40.9
20-24	1231	100.0	797	64.7	10	0.8	424	34.4
25-29	1111	100.0	840	75.6	7	0.6	264	23.8
30-34	837	100.0	655	78.3	5	0.6	177	21.1
35-39	397	100.0	307	77.3	3	0.8	87	21.9
40+	107	100.0	77	72.0	0	0.0	30	28.0
Unknown	0	...	0	...	0	...	0	...
Other	927	100.0	783	84.5	0	0.0	144	15.5
<15	2	100.0	1	50.0	0	0.0	1	50.0
15-19	35	100.0	20	57.1	0	0.0	15	42.9
15-17	8	100.0	5	62.5	0	0.0	3	37.5
18-19	27	100.0	15	55.6	0	0.0	12	44.4
20-24	127	100.0	80	63.0	0	0.0	47	37.0
25-29	277	100.0	245	88.4	0	0.0	32	11.6
30-34	315	100.0	286	90.8	0	0.0	29	9.2
35-39	136	100.0	119	87.5	0	0.0	17	12.5
40+	35	100.0	32	91.4	0	0.0	3	8.6
Unknown	0	...	0	...	0	...	0	...
Hispanic*	1876	100.0	1573	83.8	6	0.3	297	15.8
<15	0	...	0	...	0	...	0	...
15-19	176	100.0	134	76.1	0	0.0	42	23.9
15-17	58	100.0	40	69.0	0	0.0	18	31.0
18-19	118	100.0	94	79.7	0	0.0	24	20.3
20-24	511	100.0	422	82.6	0	0.0	89	17.4
25-29	505	100.0	432	85.5	1	0.2	72	14.3
30-34	400	100.0	346	86.5	2	0.5	52	13.0
35-39	216	100.0	179	82.9	2	0.9	35	16.2
40+	68	100.0	60	88.2	1	1.5	7	10.3
Unknown	0	...	0	...	0	...	0	...

Notes:

1. Percentages may not add to 100% due to rounding.
2. Percentages are calculated based upon the total number of pregnancies within each race-age category.
3. Percentages for the age categories "<15" and "40+" may be misleading due to the small number of pregnancies in this category.
4. *Women of Hispanic origin may be of any race.

PRACEAGE

Source: Delaware Health and Social Services, Division of Public Health, Delaware Health Statistics Center

TABLE D-3
NUMBER AND PERCENT OF REPORTED PREGNANCIES BY RACE, HISPANIC ORIGIN, AND EDUCATION OF WOMAN
DELAWARE, 2014

Race- Hispanic Origin/ Education	Reported Pregnancies							
	Total		Live Births		Fetal Deaths		Induced Terminations	
	Number	Percent	Number	Percent	Number	Percent	Number	Percent
All Races	13461	100.0	10934	81.2	59	0.4	2468	18.3
<9	643	100.0	573	89.1	4	0.6	66	10.3
9 to 11	1637	100.0	1326	81.0	11	0.7	300	18.3
H.S. Grad	3779	100.0	2603	68.9	22	0.6	1154	30.5
1 to 3 College	3585	100.0	3012	84.0	17	0.5	556	15.5
4+ College	3634	100.0	3357	92.4	5	0.1	272	7.5
Unknown	183	100.0	63	34.4	0	0.0	120	65.6
White	8391	100.0	7194	85.7	29	0.3	1168	13.9
<9	577	100.0	526	91.2	4	0.7	47	8.1
9 to 11	985	100.0	830	84.3	4	0.4	151	15.3
H.S. Grad	2025	100.0	1490	73.6	12	0.6	523	25.8
1 to 3 College	2280	100.0	2002	87.8	6	0.3	272	11.9
4+ College	2443	100.0	2313	94.7	3	0.1	127	5.2
Unknown	81	100.0	33	40.7	0	0.0	48	59.3
Black	4106	100.0	2920	71.1	30	0.7	1156	28.2
<9	46	100.0	31	67.4	0	0.0	15	32.6
9 to 11	596	100.0	450	75.5	7	1.2	139	23.3
H.S. Grad	1593	100.0	1006	63.2	10	0.6	577	36.2
1 to 3 College	1151	100.0	890	77.3	11	1.0	250	21.7
4+ College	648	100.0	528	81.5	2	0.3	118	18.2
Unknown	72	100.0	15	20.8	0	0.0	57	79.2
Other	927	100.0	783	84.5	0	0.0	144	15.5
<9	20	100.0	16	80.0	0	0.0	4	20.0
9 to 11	56	100.0	46	82.1	0	0.0	10	17.9
H.S. Grad	150	100.0	96	64.0	0	0.0	54	36.0
1 to 3 College	149	100.0	115	77.2	0	0.0	34	22.8
4+ College	534	100.0	507	94.9	0	0.0	27	5.1
Unknown	18	100.0	3	16.7	0	0.0	15	83.3
Hispanic*	1876	100.0	1573	83.8	6	0.3	297	15.8
<9	437	100.0	386	88.3	4	0.9	47	10.8
9 to 11	412	100.0	335	81.3	0	0.0	77	18.7
H.S. Grad	511	100.0	401	78.5	2	0.4	108	21.1
1 to 3 College	343	100.0	297	86.6	0	0.0	46	13.4
4+ College	154	100.0	139	90.3	0	0.0	15	9.7
Unknown	19	100.0	15	78.9	0	0.0	4	21.1

PEDURACE

Notes:

1. Percentages may not add to 100% due to rounding.
2. Percentages are calculated based upon the total number of pregnancies within each race-education category.
3. Percentages for the race category "Other" may be misleading due to the small number of pregnancies in this category.
4. *Women of Hispanic origin may be of any race.

Source: Delaware Health and Social Services, Division of Public Health, Delaware Health Statistics Center

TABLE D-4
NUMBER AND PERCENT OF REPORTED PREGNANCIES BY RACE AND MARITAL STATUS OF WOMAN
DELAWARE AND COUNTIES, 2014

Area/Race/ Marital Status	Reported Pregnancies							
	Total		Live Births		Fetal Deaths		Induced Terminations	
	Number	Percent	Number	Percent	Number	Percent	Number	Percent
Delaware								
All Races	13461	100.0	10934	81.2	59	0.4	2468	18.3
Married	6150	100.0	5860	95.3	19	0.3	271	4.4
Single	7311	100.0	5074	69.4	40	0.5	2197	30.1
White	8391	100.0	7194	85.7	29	0.3	1168	13.9
Married	4450	100.0	4294	96.5	12	0.3	144	3.2
Single	3941	100.0	2900	73.6	17	0.4	1024	26.0
Black	4106	100.0	2920	71.1	30	0.7	1156	28.2
Married	965	100.0	874	90.6	7	0.7	84	8.7
Single	3141	100.0	2046	65.1	23	0.7	1072	34.1
Other	927	100.0	783	84.5	0	0.0	144	15.5
Married	710	100.0	667	93.9	0	0.0	43	6.1
Single	217	100.0	116	53.5	0	0.0	101	46.5
Kent								
All Races	2683	100.0	2266	84.5	6	0.2	411	15.3
Married	1292	100.0	1241	96.1	3	0.2	48	3.7
Single	1391	100.0	1025	73.7	3	0.2	363	26.1
White	1711	100.0	1520	88.8	2	0.1	189	11.0
Married	991	100.0	956	96.5	2	0.2	33	3.3
Single	720	100.0	564	78.3	0	0.0	156	21.7
Black	848	100.0	647	76.3	4	0.5	197	23.2
Married	230	100.0	216	93.9	1	0.4	13	5.7
Single	618	100.0	431	69.7	3	0.5	184	29.8
Other	116	100.0	91	78.4	0	0.0	25	21.6
Married	66	100.0	64	97.0	0	0.0	2	3.0
Single	50	100.0	27	54.0	0	0.0	23	46.0
New Castle								
All Races	8153	100.0	6450	79.1	36	0.4	1667	20.4
Married	3808	100.0	3610	94.8	12	0.3	186	4.9
Single	4345	100.0	2840	65.4	24	0.6	1481	34.1
White	4673	100.0	3934	84.2	16	0.3	723	15.5
Married	2553	100.0	2459	96.3	7	0.3	87	3.4
Single	2120	100.0	1475	69.6	9	0.4	636	30.0
Black	2721	100.0	1862	68.4	20	0.7	839	30.8
Married	626	100.0	563	89.9	5	0.8	58	9.3
Single	2095	100.0	1299	62.0	15	0.7	781	37.3
Other	733	100.0	628	85.7	0	0.0	105	14.3
Married	611	100.0	570	93.3	0	0.0	41	6.7
Single	122	100.0	58	47.5	0	0.0	64	52.5
Sussex								
All Races	2625	100.0	2218	84.5	17	0.6	390	14.9
Married	1050	100.0	1009	96.1	4	0.4	37	3.5
Single	1575	100.0	1209	76.8	13	0.8	353	22.4
White	2007	100.0	1740	86.7	11	0.5	256	12.8
Married	906	100.0	879	97.0	3	0.3	24	2.6
Single	1101	100.0	861	78.2	8	0.7	232	21.1
Black	537	100.0	411	76.5	6	1.1	120	22.3
Married	109	100.0	95	87.2	1	0.9	13	11.9
Single	428	100.0	316	73.8	5	1.2	107	25.0
Other	78	100.0	64	82.1	0	0.0	14	17.9
Married	33	100.0	33	100.0	0	0.0	0	0.0
Single	45	100.0	31	68.9	0	0.0	14	31.1

PRMARIT

Notes:

1. Percentages may not add to 100% due to rounding.
2. Percentages are calculated based upon the total number of pregnancies within each race-marital status category.
3. Percentages for the race category "Other" may be misleading due to the small number of pregnancies in this category.

Source: Delaware Health and Social Services, Division of Public Health, Delaware Health Statistics Center

TABLE D-5
NUMBER OF REPORTED PREGNANCIES BY AGE OF WOMAN

DELAWARE AND COUNTIES, 2004-2014

(ALL RACES)

Area/ Age	2004	2005	2006	2007	2008	2009	2010	2011	2012	2013	2014
Delaware	14671	14699	15498	15691	15400	14971	14906	14437	14267	13421	13461
<15	39	37	54	37	47	33	34	32	28	18	18
15-19	1831	1786	1879	1900	1846	1574	1574	1378	1172	1067	926
15-17	660	598	626	640	607	488	504	427	348	304	273
18-19	1171	1188	1253	1260	1239	1086	1070	951	824	763	653
20-24	4022	4029	4275	4337	4141	4028	3908	3702	3703	3290	3156
25-29	3704	3802	4100	4172	4327	4172	4187	4118	3990	3797	3924
30-34	3131	3110	3169	3236	3035	3134	3211	3279	3427	3424	3508
35-39	1568	1579	1662	1616	1647	1558	1581	1536	1564	1451	1525
40+	376	356	359	393	357	472	411	392	383	374	404
Kent	2496	2793	2822	2877	2925	2901	2815	2689	2752	2672	2683
<15	10	7	5	5	5	5	4	3	2	2	3
15-19	337	354	347	378	356	291	304	267	235	201	169
15-17	111	101	92	108	111	86	98	73	60	53	44
18-19	226	253	255	270	245	205	206	194	175	148	125
20-24	862	933	900	915	899	971	852	773	808	778	754
25-29	624	746	765	837	823	825	827	831	783	785	844
30-34	418	478	511	474	511	528	529	551	597	611	631
35-39	195	219	240	211	277	203	227	217	262	228	231
40+	50	56	54	57	54	78	72	47	65	67	51
New Castle	9500	9288	9812	9773	9382	9233	9360	9143	8781	8225	8153
<15	21	24	40	21	33	21	24	21	22	14	11
15-19	1131	1043	1136	1114	1061	945	971	846	682	626	540
15-17	411	378	423	407	362	290	314	272	215	187	172
18-19	720	665	713	707	699	655	657	574	467	439	368
20-24	2281	2273	2464	2405	2251	2209	2254	2147	2082	1861	1729
25-29	2379	2398	2557	2535	2639	2543	2573	2527	2445	2251	2285
30-34	2252	2161	2178	2259	2058	2103	2150	2244	2275	2236	2273
35-39	1163	1155	1183	1150	1092	1090	1107	1075	1033	987	1026
40+	273	234	254	289	248	322	281	283	242	250	289
Sussex	2675	2618	2864	3041	3093	2837	2731	2605	2734	2524	2625
<15	8	6	9	11	9	7	6	8	4	2	4
15-19	363	389	396	408	429	338	299	265	255	240	217
15-17	138	119	111	125	134	112	92	82	73	64	57
18-19	225	270	285	283	295	226	207	183	182	176	160
20-24	879	823	911	1017	991	848	802	782	813	651	673
25-29	701	658	778	800	865	804	787	760	762	761	795
30-34	461	471	480	503	466	503	532	484	555	577	604
35-39	210	205	239	255	278	265	247	244	269	236	268
40+	53	66	51	47	55	72	58	62	76	57	64

PRACERAT1

Note:

Reported pregnancies include live births, fetal deaths, and induced terminations of pregnancy.

Source: Delaware Health and Social Services, Division of Public Health, Delaware Health Statistics Center

TABLE D-6
NUMBER OF REPORTED PREGNANCIES BY AGE OF WOMAN
DELAWARE AND COUNTIES, 2004-2014
(WHITE)

Area/ Age	2004	2005	2006	2007	2008	2009	2010	2011	2012	2013	2014
Delaware	9711	9774	10080	9986	9866	9342	9244	9092	8899	8299	8391
<15	17	18	20	13	20	15	9	8	11	7	4
15-19	1009	1011	1041	1020	1018	829	808	740	630	524	478
15-17	342	328	322	312	326	250	261	230	168	155	129
18-19	667	683	719	708	692	579	547	510	462	369	349
20-24	2465	2532	2572	2589	2458	2359	2222	2105	2092	1834	1790
25-29	2494	2557	2773	2741	2816	2688	2712	2689	2531	2413	2523
30-34	2310	2243	2261	2237	2153	2118	2170	2279	2358	2320	2349
35-39	1143	1152	1170	1129	1169	1035	1047	1013	1031	956	989
40+	273	261	243	257	232	298	276	258	246	245	258
Kent	1683	1877	1879	1883	1887	1842	1779	1750	1775	1676	1711
<15	6	2	3	2	2	4	1	1	2	1	1
15-19	186	200	187	224	194	148	155	150	113	90	90
15-17	58	57	43	55	53	41	50	42	28	23	19
18-19	128	143	144	169	141	107	105	108	85	67	71
20-24	555	604	565	548	540	593	509	450	476	450	440
25-29	428	513	544	587	556	555	566	593	532	526	580
30-34	328	356	366	329	367	353	357	399	432	420	432
35-39	141	164	175	153	192	142	150	130	177	146	137
40+	39	38	39	40	36	47	41	27	43	43	31
New Castle	5978	5890	6070	5947	5543	5330	5363	5337	5001	4702	4673
<15	10	12	13	7	12	9	7	4	6	5	2
15-19	573	549	595	570	514	457	439	403	328	273	234
15-17	193	187	208	197	182	130	148	135	92	90	72
18-19	380	362	387	373	332	327	291	268	236	183	162
20-24	1271	1350	1360	1347	1189	1145	1154	1109	1010	931	892
25-29	1508	1513	1641	1555	1564	1504	1517	1488	1390	1288	1313
30-34	1591	1481	1494	1509	1380	1342	1357	1478	1477	1415	1424
35-39	831	815	802	778	733	681	700	673	638	640	633
40+	194	170	165	181	151	192	189	182	152	150	175
Sussex	2050	2007	2131	2156	2436	2170	2102	2005	2123	1921	2007
<15	1	4	4	4	6	2	1	3	3	1	1
15-19	250	262	259	226	310	224	214	187	189	161	154
15-17	91	84	71	60	91	79	63	53	48	42	38
18-19	159	178	188	166	219	145	151	134	141	119	116
20-24	639	578	647	694	729	621	559	546	606	453	458
25-29	558	531	588	599	696	629	629	608	609	599	630
30-34	391	406	401	399	406	423	456	402	449	485	493
35-39	171	173	193	198	244	212	197	210	216	170	219
40+	40	53	39	36	45	59	46	49	51	52	52

PRACERAT2

Note:
Reported pregnancies include live births, fetal deaths, and induced terminations of pregnancy.

Source: Delaware Health and Social Services, Division of Public Health, Delaware Health Statistics Center

TABLE D-7
NUMBER OF REPORTED PREGNANCIES BY AGE OF WOMAN

DELAWARE AND COUNTIES, 2004-2014

(BLACK)

Area/ Age	2004	2005	2006	2007	2008	2009	2010	2011	2012	2013	2014
Delaware	4233	4187	4522	4738	4727	4802	4858	4622	4550	4317	4106
<15	22	18	32	22	27	18	24	24	17	9	12
15-19	783	741	786	805	790	718	734	616	512	509	411
15-17	308	262	286	309	272	232	234	193	175	140	135
18-19	475	479	500	496	518	486	500	423	337	369	276
20-24	1428	1372	1525	1564	1542	1532	1580	1515	1508	1344	1231
25-29	975	1020	1044	1132	1229	1237	1213	1182	1199	1130	1111
30-34	608	632	677	722	670	758	775	769	818	835	837
35-39	333	325	371	385	361	409	417	404	392	387	397
40+	84	79	87	108	108	130	115	112	104	103	107
Kent	703	785	840	913	947	947	932	863	873	884	848
<15	4	5	2	3	3	1	3	2	0	0	1
15-19	141	135	154	145	152	133	145	112	119	99	68
15-17	50	42	48	51	54	42	47	30	32	26	20
18-19	91	93	106	94	98	91	98	82	87	73	48
20-24	280	299	313	345	333	345	321	302	305	303	285
25-29	165	197	186	229	244	246	222	220	224	231	237
30-34	61	93	119	123	130	143	145	130	140	159	165
35-39	42	42	54	52	69	55	65	80	72	71	74
40+	10	14	12	16	16	24	31	17	13	21	18
New Castle	2988	2869	3160	3219	3206	3267	3362	3212	3138	2902	2721
<15	11	12	26	14	21	12	16	17	16	8	8
15-19	534	486	519	524	525	474	507	430	333	336	283
15-17	212	186	203	206	177	158	159	135	119	95	97
18-19	322	300	316	318	348	316	348	295	214	241	186
20-24	934	850	1019	991	971	980	1029	991	1008	858	756
25-29	687	717	733	774	846	845	854	827	841	758	733
30-34	495	491	510	539	490	552	569	569	588	599	579
35-39	263	259	286	295	270	310	312	295	282	263	281
40+	64	54	67	82	83	94	75	83	70	80	81
Sussex	542	533	522	606	574	588	564	547	539	531	537
<15	7	1	4	5	3	5	5	5	1	1	3
15-19	108	120	113	136	113	111	82	74	60	74	60
15-17	46	34	35	52	41	32	28	28	24	19	18
18-19	62	86	78	84	72	79	54	46	36	55	42
20-24	214	223	193	228	238	207	230	222	195	183	190
25-29	123	106	125	129	139	146	137	135	134	141	141
30-34	52	48	48	60	50	63	61	70	90	77	93
35-39	28	24	31	38	22	44	40	29	38	53	42
40+	10	11	8	10	9	12	9	12	21	2	8

PRACERAT3

Note:

Reported pregnancies include live births, fetal deaths, and induced terminations of pregnancy.

Source: Delaware Health and Social Services, Division of Public Health, Delaware Health Statistics Center

TABLE D-8
 FIVE-YEAR AVERAGE RATE OF REPORTED PREGNANCIES BY AGE OF WOMAN
 DELAWARE AND COUNTIES, 2002-2014

(ALL RACES)

Area/ Age	2002- 2006	2003- 2007	2004- 2008	2005- 2009	2006- 2010	2007- 2011	2008- 2012	2009- 2013	2009- 2014
Delaware	84.3	85.5	86.2	86.4	86.6	85.5	84.1	82.1	80.4
<15	1.7	1.5	1.5	1.5	1.5	1.3	1.3	1.0	0.9
15-19	67.1	65.7	64.3	61.5	59.6	56.2	51.5	46.7	42.7
15-17	38.1	37.0	35.9	33.6	32.5	30.4	27.4	24.3	21.9
18-19	112.1	110.0	107.9	104.0	100.2	94.0	86.3	78.9	72.6
20-24	139.5	143.9	146.1	146.9	146.3	140.6	134.0	126.4	119.1
25-29	142.4	140.2	139.1	137.8	137.2	137.8	138.8	137.3	136.9
30-34	114.4	117.9	118.8	119.4	120.2	117.3	113.8	112.2	111.5
35-39	50.4	51.9	53.5	54.2	54.8	55.3	56.6	56.5	56.8
40+	5.3	5.4	5.5	5.8	5.9	6.1	6.1	6.3	6.2
Kent	84.6	85.4	85.9	86.9	86.0	84.5	83.3	81.4	79.8
<15	1.5	1.2	1.2	1.0	0.9	0.8	0.7	0.6	0.5
15-19	65.2	64.1	63.3	60.9	58.7	56.0	51.1	45.9	41.8
15-17	32.0	31.3	31.4	29.7	29.3	28.2	25.4	22.1	19.6
18-19	116.1	113.1	110.4	106.3	101.4	96.3	88.3	80.5	74.1
20-24	166.1	166.0	161.7	162.2	156.8	149.6	144.2	139.6	132.6
25-29	143.9	144.1	143.1	142.6	139.5	139.2	136.8	135.1	135.2
30-34	95.8	98.6	100.6	103.3	103.9	101.1	100.5	99.5	99.1
35-39	40.5	41.0	44.1	44.2	44.4	43.7	46.1	44.6	45.5
40+	4.7	4.7	4.6	5.0	5.2	5.1	5.3	5.5	5.2
New Castle	83.4	84.2	84.3	84.1	84.5	83.8	82.6	81.0	79.4
<15	1.7	1.6	1.6	1.6	1.6	1.4	1.4	1.2	1.1
15-19	66.1	63.8	61.0	57.8	56.5	53.3	49.0	45.0	41.1
15-17	39.6	38.0	36.0	33.3	32.2	29.8	26.8	24.0	22.1
18-19	107.5	104.5	100.6	96.0	93.2	87.7	81.0	74.8	68.2
20-24	121.9	127.3	130.7	133.1	134.9	130.2	123.7	116.9	109.6
25-29	136.3	131.8	129.2	127.9	128.1	130.8	135.2	135.9	136.5
30-34	121.5	125.5	126.6	126.1	126.2	122.8	117.6	115.0	114.3
35-39	55.9	57.4	58.1	58.4	58.7	59.6	60.4	61.0	61.0
40+	5.8	6.1	6.2	6.4	6.7	6.9	6.7	6.8	6.8
Sussex	87.6	90.5	93.9	94.5	94.8	92.9	90.6	86.6	84.7
<15	1.8	1.6	1.7	1.7	1.7	1.6	1.3	1.0	0.9
15-19	72.6	73.8	76.7	75.1	71.7	66.7	60.8	53.5	49.1
15-17	39.4	39.7	40.7	38.7	36.8	34.9	31.8	27.3	23.8
18-19	122.6	125.1	129.9	128.6	123.5	114.2	103.0	91.4	86.1
20-24	183.0	182.5	183.5	176.3	171.5	164.3	156.5	143.6	136.1
25-29	167.9	173.7	179.6	175.9	173.8	164.1	154.2	144.5	140.0
30-34	105.2	108.4	107.8	111.0	114.9	114.2	114.5	116.1	115.5
35-39	39.6	41.6	45.6	48.4	50.5	51.7	53.5	52.7	53.7
40+	4.3	4.1	4.1	4.4	4.3	4.5	5.0	5.2	5.1

PRACERAT4

Notes:

1. Reported pregnancies include live births, fetal deaths, and induced terminations of pregnancy.
2. For Delaware and counties, pregnancy rates represent the number of reported pregnancies to women of all ages per 1,000 women 15-44 years of age in the population.
3. For each age group, the denominator for the pregnancy rate is the total number women in the county/state within that age category except the "<15" and "40+" age categories which are based on women ages 10-14 and 40-49, respectively.

Source: Delaware Health and Social Services, Division of Public Health, Delaware Health Statistics Center

TABLE D-9
FIVE-YEAR AVERAGE RATE OF REPORTED PREGNANCIES BY AGE OF WOMAN

DELAWARE AND COUNTIES, 2002-2014

(WHITE)

Area/ Age	2002- 2006	2003- 2007	2004- 2008	2005- 2009	2006- 2010	2007- 2011	2008- 2012	2009- 2013	2009- 2014
Delaware	78.4	79.7	81.0	81.1	80.9	80.1	79.0	77.1	76.0
<15	1.0	0.9	0.9	0.9	0.9	0.7	0.7	0.6	0.4
15-19	54.2	53.4	52.9	50.7	48.7	45.9	42.4	37.9	34.8
15-17	29.1	28.4	28.0	26.3	25.4	24.1	22.0	19.4	17.6
18-19	92.9	91.8	90.9	87.6	83.5	77.8	71.7	64.2	59.3
20-24	121.1	126.2	130.1	131.3	129.5	124.3	118.1	110.8	104.3
25-29	137.8	134.9	134.2	132.7	132.0	132.9	134.4	133.5	134.1
30-34	119.3	122.4	123.9	123.7	123.9	120.7	117.1	114.4	113.7
35-39	51.3	52.7	54.8	54.9	54.8	55.1	56.3	55.8	56.2
40+	5.1	5.1	5.1	5.3	5.4	5.5	5.6	5.8	5.8
Kent	81.9	82.9	83.7	84.7	83.5	82.5	81.8	80.1	78.9
<15	0.8	0.8	0.8	0.7	0.7	0.6	0.6	0.5	0.3
15-19	52.3	52.2	51.5	49.4	47.2	45.7	40.3	35.4	32.6
15-17	25.3	24.1	23.2	21.8	21.3	21.4	19.2	16.8	15.0
18-19	93.3	93.9	92.9	89.4	84.7	80.8	70.8	61.9	57.7
20-24	166.8	159.9	151.4	148.3	140.1	132.3	128.1	123.8	117.1
25-29	156.2	162.7	165.2	166.1	163.3	159.9	151.5	145.1	142.6
30-34	102.4	104.9	108.4	111.4	112.6	114.1	118.6	119.0	119.7
35-39	41.2	41.9	44.7	45.1	44.6	43.0	45.7	44.3	45.0
40+	4.5	4.5	4.4	4.6	4.7	4.4	4.6	4.8	4.5
New Castle	75.8	76.8	76.9	76.5	76.1	75.3	73.9	72.6	71.6
<15	1.0	0.9	1.0	1.0	0.9	0.7	0.7	0.6	0.4
15-19	51.7	50.5	48.3	45.9	44.0	41.0	37.5	34.0	30.8
15-17	28.6	28.2	27.3	25.4	24.6	22.9	20.4	18.2	16.9
18-19	87.8	85.5	81.2	77.8	73.5	67.6	62.0	56.5	50.4
20-24	96.9	104.4	109.3	112.9	113.4	109.5	101.9	95.9	90.3
25-29	125.0	118.3	114.1	112.1	111.6	114.4	119.8	122.9	125.6
30-34	126.0	129.5	130.4	128.0	126.2	120.6	113.4	108.9	108.0
35-39	57.4	59.0	60.0	59.4	58.9	59.3	59.5	59.9	59.7
40+	5.6	5.7	5.8	5.8	6.1	6.3	6.3	6.4	6.5
Sussex	84.3	86.3	91.8	92.5	93.3	92.4	92.3	88.0	86.5
<15	1.1	1.0	1.0	1.1	0.9	0.9	0.8	0.5	0.5
15-19	63.6	63.3	68.2	66.5	64.4	60.9	59.3	51.8	48.7
15-17	34.3	33.3	34.8	33.7	31.9	30.4	29.8	25.7	22.2
18-19	107.6	108.1	117.0	114.5	112.4	106.2	102.0	89.4	87.0
20-24	174.2	170.8	175.1	168.0	163.1	156.4	152.4	139.2	130.9
25-29	173.2	178.8	190.2	185.8	183.4	174.3	165.1	153.4	148.8
30-34	111.8	114.5	116.7	121.2	126.7	127.2	129.1	130.8	129.6
35-39	40.3	42.1	47.1	49.7	51.3	53.5	56.2	53.9	55.9
40+	4.0	3.9	3.9	4.2	4.1	4.4	4.7	5.0	5.0

PRACERAT5

Notes:

1. Reported pregnancies include live births, fetal deaths, and induced terminations of pregnancy.
2. For Delaware and counties, pregnancy rates represent the number of reported pregnancies to women of all ages per 1,000 women 15-44 years of age in the population.
3. For each age group, the denominator for the pregnancy rate is the total number women in the county/state within that age category except the "<15" and "40+" age categories which are based on women ages 10-14 and 40-49, respectively.
4. Comparisons using rates for the "<15" and "40+" age categories may be misleading due to the small number of events in these categories.

Source: Delaware Health and Social Services, Division of Public Health, Delaware Health Statistics Center

TABLE D-10
FIVE-YEAR AVERAGE RATE OF REPORTED PREGNANCIES BY AGE OF WOMAN

DELAWARE AND COUNTIES, 2002-2014

(BLACK)

Area/ Age	2002- 2006	2003- 2007	2004- 2008	2005- 2009	2006- 2010	2007- 2011	2008- 2012	2009- 2013	2009- 2014
Delaware	103.1	104.1	104.3	105.1	106.7	106.1	104.5	102.2	98.7
<15	3.5	3.3	3.2	3.1	3.3	3.0	2.9	2.4	2.2
15-19	108.1	103.9	101.1	96.6	94.9	90.4	83.7	77.6	70.8
15-17	66.6	63.7	60.9	56.5	55.1	51.5	46.7	41.7	37.9
18-19	173.3	167.3	164.0	158.4	154.6	147.2	136.7	128.5	118.0
20-24	201.3	202.9	201.9	201.6	204.6	199.2	192.6	184.1	173.9
25-29	155.8	153.4	152.2	151.6	151.1	152.6	154.4	152.1	148.8
30-34	100.8	106.5	107.4	110.6	113.2	110.4	107.1	106.2	104.2
35-39	46.0	48.5	50.0	52.7	56.0	58.4	60.0	61.7	61.2
40+	5.6	6.0	6.4	6.9	7.3	7.6	7.5	7.5	7.2
Kent	97.8	99.2	99.3	101.2	101.5	99.3	96.4	93.6	90.3
<15	3.4	2.6	2.5	2.0	1.6	1.6	1.2	0.8	0.8
15-19	106.4	101.6	100.5	96.5	96.0	89.4	85.2	78.0	69.5
15-17	54.9	55.0	56.7	53.6	53.9	49.3	44.7	38.0	33.0
18-19	186.4	172.1	165.2	158.9	157.0	147.6	143.8	137.4	124.1
20-24	174.6	190.8	197.8	210.2	214.6	209.6	199.6	193.4	185.4
25-29	124.7	116.9	112.1	111.2	107.6	112.5	118.5	124.3	129.5
30-34	82.9	88.6	89.8	94.6	95.6	84.7	75.8	71.9	69.7
35-39	39.4	41.2	45.2	46.4	49.5	52.7	54.7	52.7	52.1
40+	5.2	5.3	5.4	6.4	7.5	7.7	7.5	7.9	7.5
New Castle	106.6	106.8	106.6	106.8	109.0	108.6	107.7	105.5	101.7
<15	3.5	3.5	3.3	3.3	3.5	3.2	3.2	2.7	2.5
15-19	110.7	104.6	100.3	94.7	93.6	89.7	83.6	77.7	71.7
15-17	72.1	66.8	61.8	56.8	55.0	51.2	46.8	42.6	39.1
18-19	172.1	165.6	162.5	154.6	152.0	146.2	136.0	127.1	117.8
20-24	212.6	207.7	202.7	199.3	203.0	195.8	189.9	181.0	168.6
25-29	169.1	168.7	170.2	171.0	172.2	172.8	173.1	167.0	160.2
30-34	109.2	115.4	117.5	120.9	124.5	124.7	123.7	124.6	122.7
35-39	50.1	52.6	53.7	56.2	59.0	61.3	62.8	64.7	64.5
40+	5.8	6.3	6.9	7.3	7.6	7.9	7.6	7.6	7.4
Sussex	92.9	97.9	100.1	101.7	102.7	103.5	101.0	99.4	97.3
<15	3.7	3.4	3.8	3.5	4.4	4.6	3.8	3.4	3.0
15-19	99.0	103.5	105.2	106.1	100.2	94.9	82.3	76.5	68.3
15-17	57.0	60.7	62.2	58.6	57.1	56.1	48.8	42.9	39.0
18-19	163.0	168.2	168.7	175.2	163.5	151.7	130.0	123.3	109.7
20-24	197.2	200.9	204.4	199.3	197.6	200.1	195.2	185.2	183.0
25-29	142.1	146.5	144.9	142.0	142.6	138.6	133.8	131.0	127.3
30-34	74.1	78.7	74.6	77.2	79.4	81.5	84.7	86.5	88.1
35-39	31.2	33.6	34.2	40.1	46.5	48.5	50.3	59.4	58.1
40+	5.0	4.9	5.0	5.2	5.0	5.6	6.9	6.4	6.1

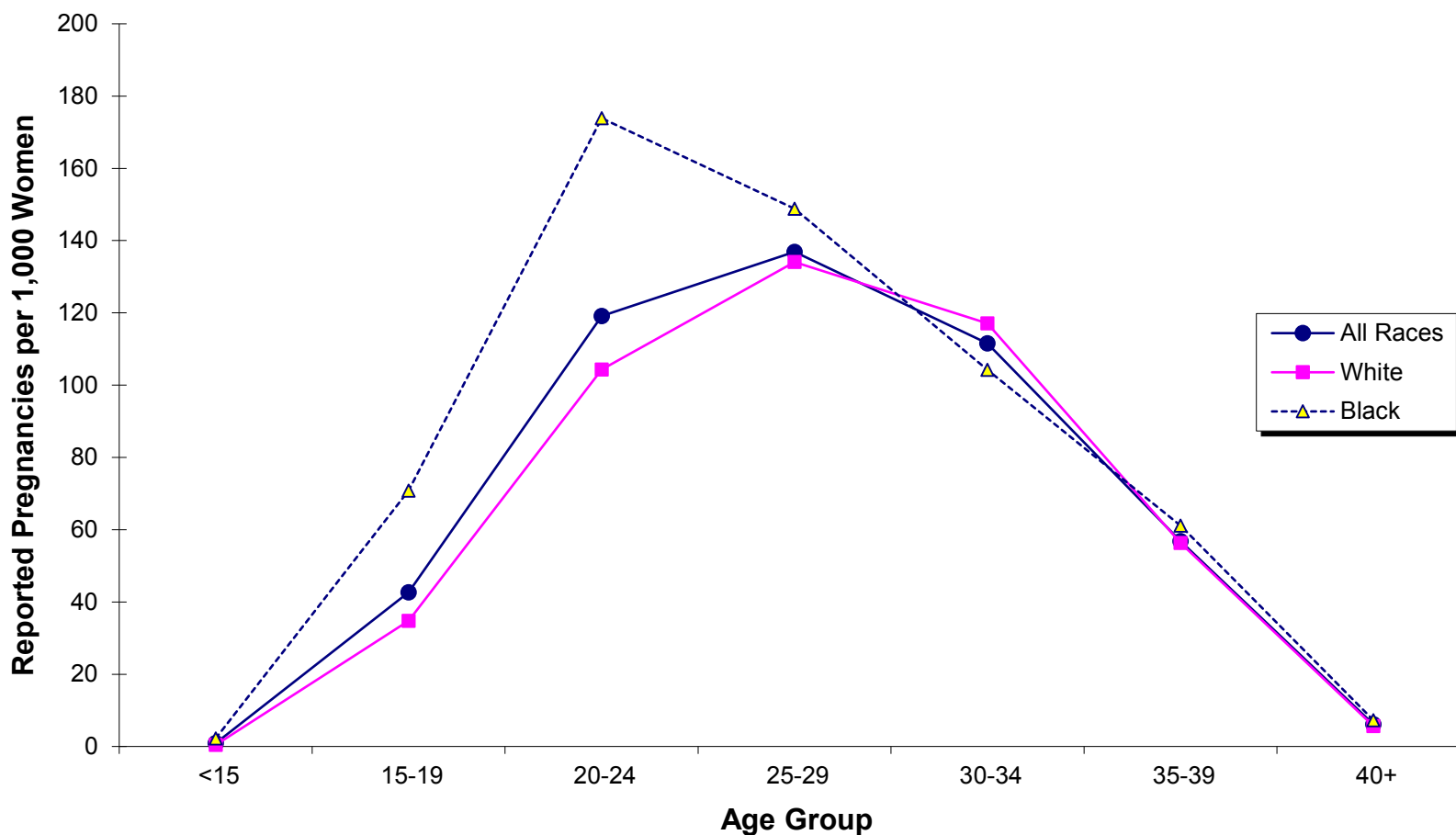
PRACERAT6

Notes:

1. Reported pregnancies include live births, fetal deaths, and induced terminations of pregnancy.
2. For Delaware and counties, pregnancy rates represent the number of reported pregnancies to women of all ages per 1,000 women 15-44 years of age in the population.
3. For each age group, the denominator for the pregnancy rate is the total number women in the county/state within that age category except the "<15" and "40+" age categories which are based on women ages 10-14 and 40-49, respectively.
4. Comparisons using rates for the "<15" and "40+" age categories may be misleading due to the small number of events in these categories.

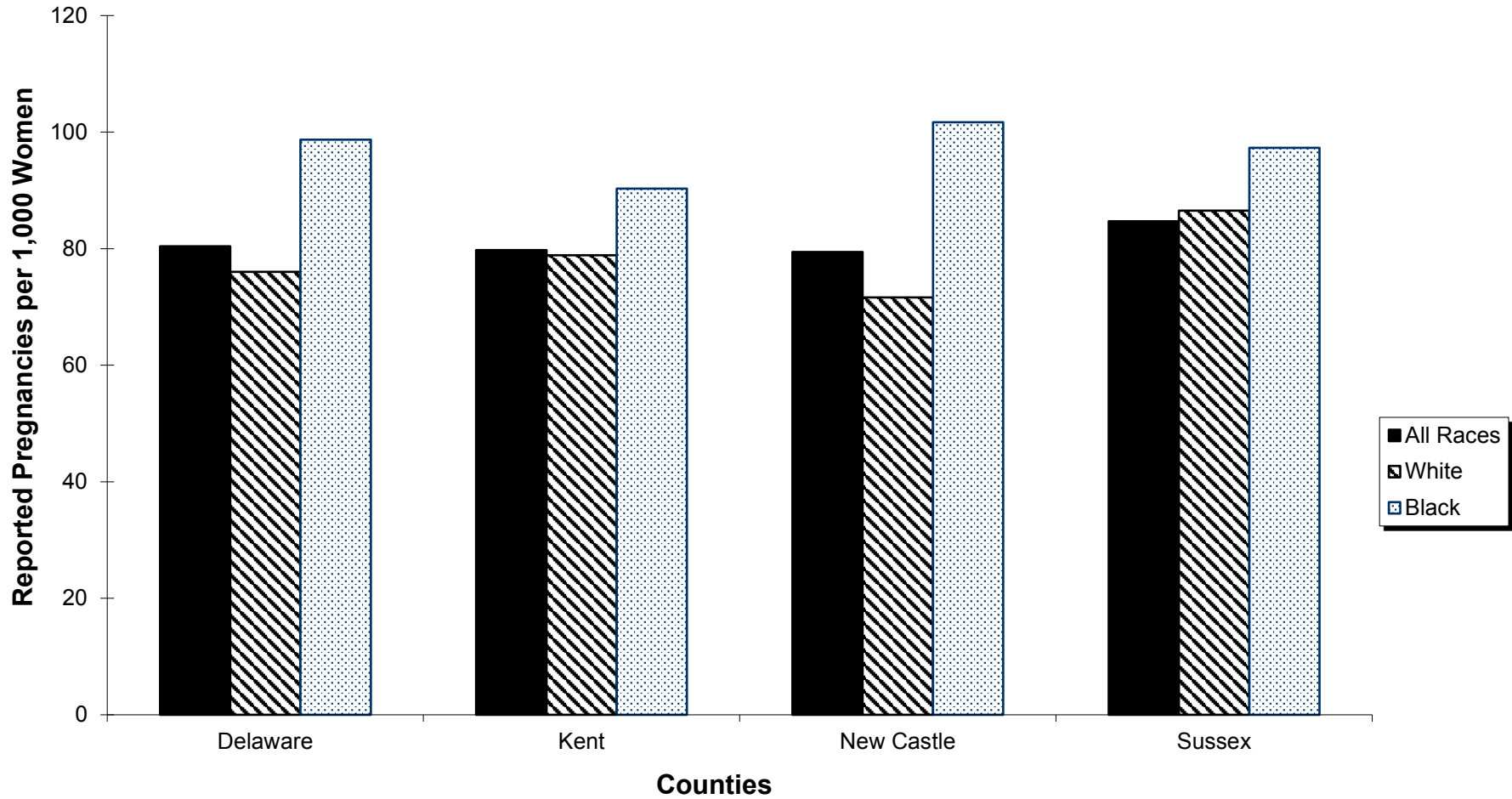
Source: Delaware Health and Social Services, Division of Public Health, Delaware Health Statistics Center

Figure D-1
Five-year Average Rate of Reported Pregnancies by Age and Race
Delaware, 2009-2014



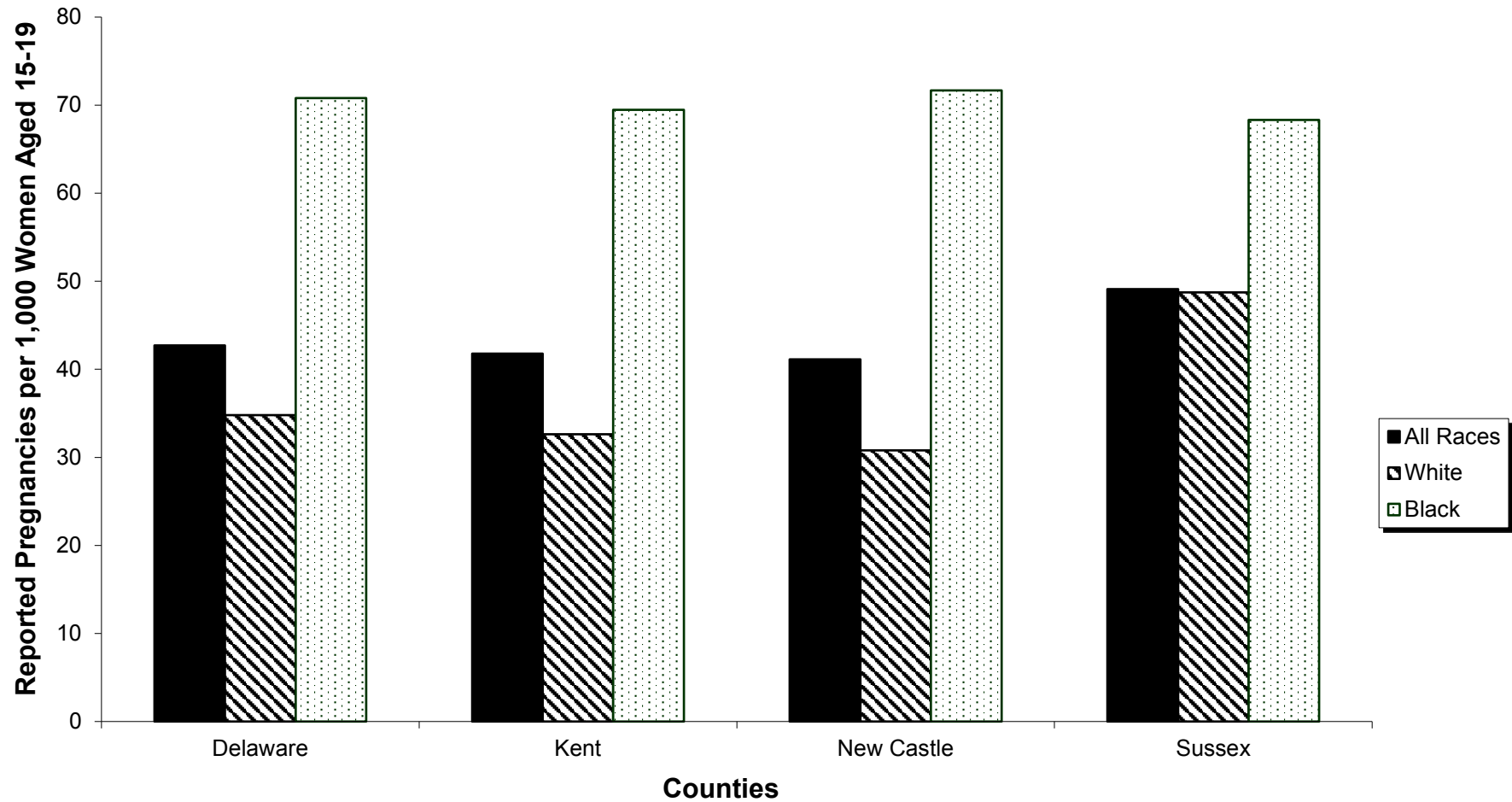
Source: Delaware Health and Social Services, Division of Public Health, Delaware Health Statistics Center

**Figure D-2
Five-year Average Rate of Reported Pregnancies by County and Race
Delaware, 2010-2014**



Source: Delaware Health and Social Services, Division of Public Health, Delaware Health Statistics Center

Figure D-3
Five-year Average Teenage (15-19) Pregnancy Rate by County and Race
Delaware, 2010-2014

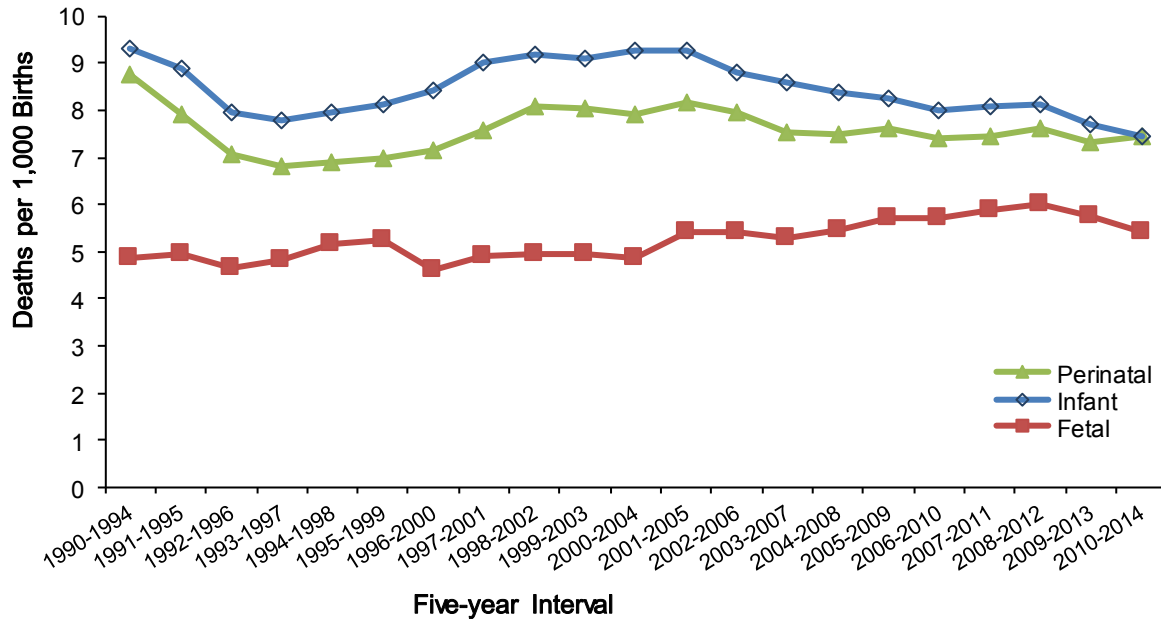


Source: Delaware Health and Social Services, Division of Public Health, Delaware Health Statistics Center

FETAL AND PERINATAL DEATHS

Perinatal mortality refers to deaths occurring in the period around delivery, and includes late fetal deaths (>28 weeks gestation) and early infant deaths (<7 days of age). Perinatal mortality trends paralleled those of infant mortality, decreasing from 1990-1994 to their lowest level in 1993-1997, and then increasing through 2001-2005, after which they began a gradual decrease through 2009-2014.

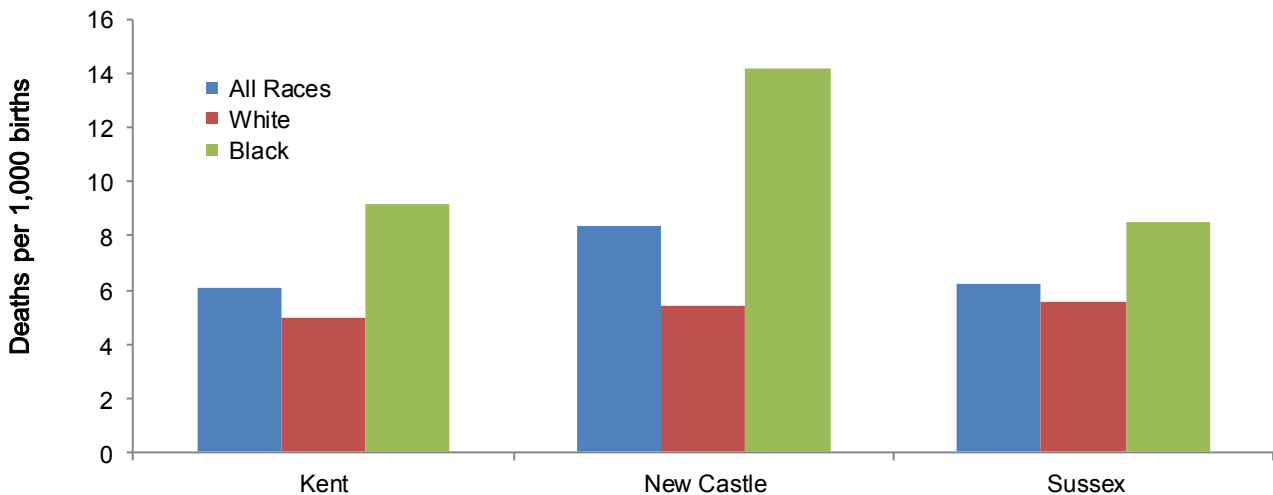
Five-year Fetal, Perinatal, and Infant Mortality Rates Delaware, 1990-2014



Source: Delaware Health and Social Services, Division of Public Health, Delaware Health Statistics Center

Like infant mortality rates, perinatal mortality rates for black women were substantially higher than the perinatal mortality rates for white women, regardless of county. In New Castle County, the perinatal mortality rate for black women was more than double that of white women.

Five-year Average Perinatal Mortality Rates by Race and County, Delaware, 2010-2014

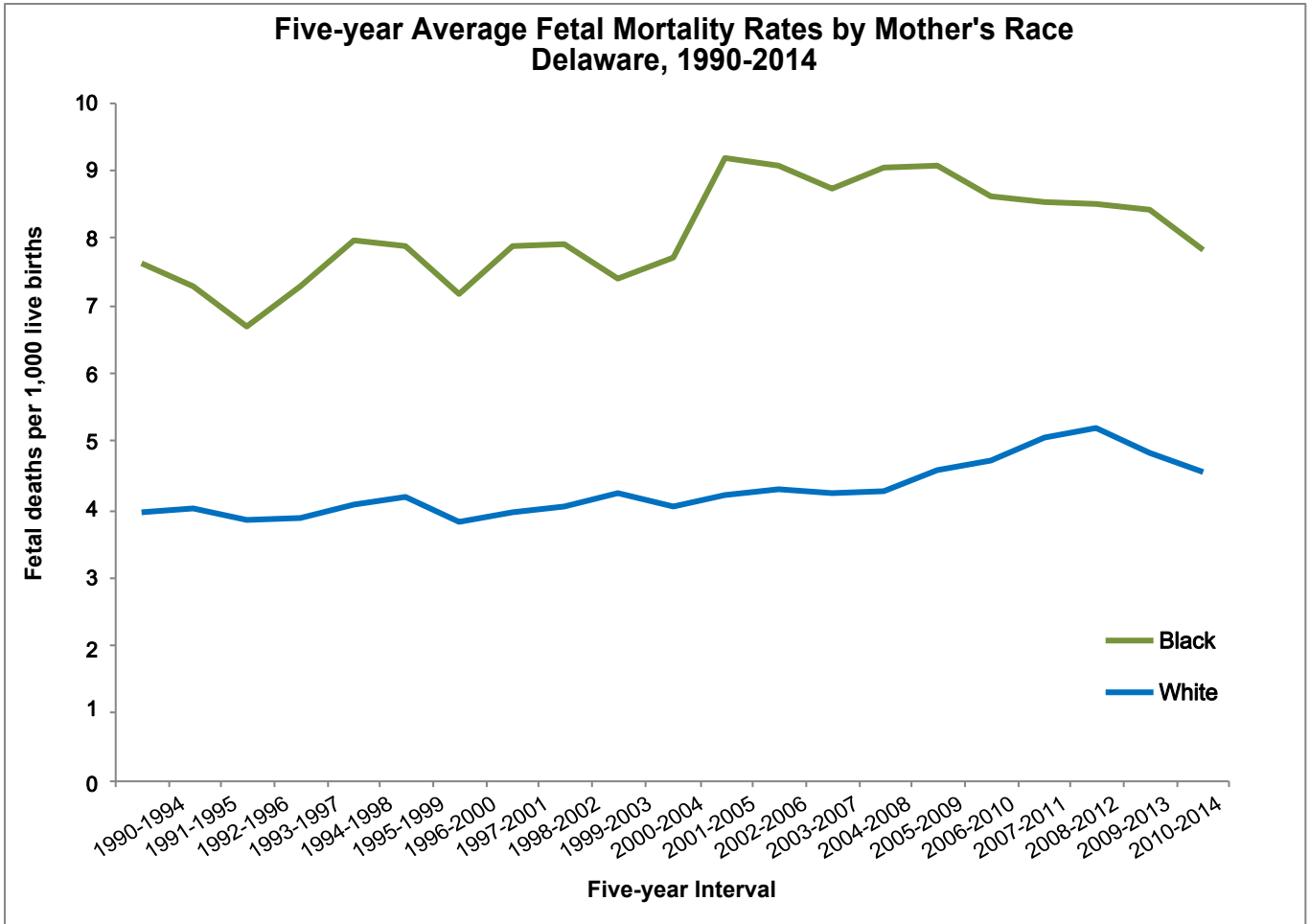


Note: Rates include late fetal deaths

Source: Delaware Health and Social Services, Division of Public Health, Delaware Health Statistics Center

FETAL AND PERINATAL DEATHS

In 2014, there were 59 reported fetal deaths in Delaware. In 2010-2014, the fetal mortality rate was 5.7 fetal deaths per 1,000 live births and fetal deaths. Fetal mortality rates for black women have been consistently higher than the rates for white women, and in 2010-2014 they were 41 percent higher than the rate of white women (7.8 versus 4.6).



Source: Delaware Health and Social Services, Division of Public Health, Delaware Health Statistics Center

TABLE D-11
NUMBER OF FETAL DEATHS BY RACE, HISPANIC ORIGIN, AND AGE OF WOMAN
DELAWARE AND COUNTIES, 2014

Area/ Age	Race-Hispanic Origin				
	All Races	White	Black	Other	Hispanic*
Delaware	59	29	30	0	6
<20	7	2	5	0	0
20-24	18	8	10	0	0
25-34	27	15	12	0	3
35+	7	4	3	0	3
Unknown	0	0	0	0	0
Kent	6	2	4	0	0
<20	2	0	2	0	0
20-24	2	1	1	0	0
25-34	2	1	1	0	0
35+	0	0	0	0	0
Unknown	0	0	0	0	0
New Castle	36	16	20	0	2
<20	3	0	3	0	0
20-24	10	4	6	0	0
25-34	20	11	9	0	1
35+	3	1	2	0	1
Unknown	0	0	0	0	0
Sussex	17	11	6	0	4
<20	2	2	0	0	0
20-24	6	3	3	0	0
25-34	5	3	2	0	2
35+	4	3	1	0	2
Unknown	0	0	0	0	0

Notes: PRAGERACECTY
Fetal deaths are reportable events if the fetus weighs at least 350 grams, or if weight is unknown, has reached at least 20 weeks of gestation. For more details, see "Basic Definitions".
*People of Hispanic origin may be of any race.

Source: Delaware Health and Social Services, Division of Public Health, Delaware Health Statistics Center

TABLE D-12
NUMBER FETAL DEATHS BY RACE, HISPANIC ORIGIN, AND EDUCATION OF WOMAN
DELAWARE, 2014

Education	Race-Hispanic Origin				
	All Races	White	Black	Other	Hispanic*
Total	59	29	30	0	53
<9	4	4	0	0	0
9 to 11	11	4	7	0	11
H.S. Grad	22	12	10	0	20
1 to 3 College	17	6	11	0	17
4+ College	5	3	2	0	5
Unknown	0	0	0	0	0

PEDURACE

Notes:

Fetal deaths are reportable events if the fetus weighs at least 350 grams, or if weight is unknown, has reached at least 20 weeks of gestation. For more details, see "Basic Definitions".

*People of Hispanic origin may be of any race.

Source: Delaware Health and Social Services, Division of Public Health, Delaware Health Statistics Center

TABLE D-13
NUMBER OF FETAL DEATHS BY RACE, HISPANIC ORIGIN, AND MARITAL STATUS OF WOMAN
DELAWARE AND COUNTIES, 2014

Area/ Marital Status	Race-Hispanic Origin				
	All Races	White	Black	Other	Hispanic*
Delaware	59	29	30	0	6
Married	19	12	7	0	4
Single	40	17	23	0	2
Kent	6	2	4	0	0
Married	3	2	1	0	0
Single	3	0	3	0	0
New Castle	36	16	20	0	2
Married	12	7	5	0	2
Single	24	9	15	0	0
Sussex	17	11	6	0	4
Married	4	3	1	0	2
Single	13	8	5	0	2

PRMARIT

Note:

Fetal deaths are reportable events if the fetus weighs at least 350 grams, or if weight is unknown, has reached at least 20 weeks of gestation. For more details, see "Basic Definitions".

*People of Hispanic origin may be of any race.

Source: Delaware Health and Social Services, Division of Public Health, Delaware Health Statistics Center

TABLE D-14
NUMBER OF FETAL DEATHS BY WEIGHT OF FETUS IN GRAMS AND RACE OF WOMAN

DELAWARE AND COUNTIES, 2014

Area/ Weight	Race			
	All Races	White	Black	Other
Delaware	59	29	30	0
<500	13	7	6	0
500-749	8	5	3	0
750-999	9	2	7	0
1000-1499	6	1	5	0
1500-1999	4	3	1	0
2000-2499	6	2	4	0
2500+	13	9	4	0
Unknown	0	0	0	0
Kent	6	2	4	0
<500	1	1	0	0
500-749	1	1	0	0
750-999	3	0	3	0
1000-1499	0	0	0	0
1500-1999	0	0	0	0
2000-2499	1	0	1	0
2500+	0	0	0	0
Unknown	0	0	0	0
New Castle	36	16	20	0
<500	7	4	3	0
500-749	5	2	3	0
750-999	5	2	3	0
1000-1499	5	1	4	0
1500-1999	4	3	1	0
2000-2499	3	0	3	0
2500+	7	4	3	0
Unknown	0	0	0	0
Sussex	17	11	6	0
<500	5	2	3	0
500-749	2	2	0	0
750-999	1	0	1	0
1000-1499	1	0	1	0
1500-1999	0	0	0	0
2000-2499	2	2	0	0
2500+	6	5	1	0
Unknown	0	0	0	0

FDWTRACE

Note:

Fetal deaths are reportable events if the fetus weighs at least 350 grams, or if weight is unknown, has reached at least 20 weeks of gestation. For more details, see "Basic Definitions."

Source: Delaware Health and Social Services, Division Public Health, Delaware Health Statistics Center

TABLE D-15
NUMBER OF FETAL DEATHS BY WEEKS OF GESTATION AND RACE OF WOMAN
DELAWARE AND COUNTIES, 2014

Area/ Age	Race			
	All Races	White	Black	Other
Delaware	59	29	30	0
<20 Weeks	3	3	0	0
20-24 Weeks	17	9	8	0
25-29 Weeks	13	4	9	0
30-34 Weeks	7	1	6	0
35-39 Weeks	13	7	6	0
40+ Weeks	6	5	1	0
Unknown	0	0	0	0
Kent	6	2	4	0
<20 Weeks	0	0	0	0
20-24 Weeks	2	2	0	0
25-29 Weeks	3	0	3	0
30-34 Weeks	1	0	1	0
35-39 Weeks	0	0	0	0
40+ Weeks	0	0	0	0
Unknown	0	0	0	0
New Castle	36	16	20	0
<20 Weeks	2	2	0	0
20-24 Weeks	11	5	6	0
25-29 Weeks	6	3	3	0
30-34 Weeks	6	1	5	0
35-39 Weeks	6	1	5	0
40+ Weeks	5	4	1	0
Unknown	0	0	0	0
Sussex	17	11	6	0
<20 Weeks	1	1	0	0
20-24 Weeks	4	2	2	0
25-29 Weeks	4	1	3	0
30-34 Weeks	0	0	0	0
35-39 Weeks	7	6	1	0
40+ Weeks	1	1	0	0
Unknown	0	0	0	0

Note: FDGESRAC
Fetal deaths are reportable events if the fetus weighs at least 350 grams, or if weight is unknown, has reached at least 20 weeks of gestation. For more details, see "Basic Definitions".

Source: Delaware Health and Social Services, Division of Public Health, Delaware Health Statistics Center

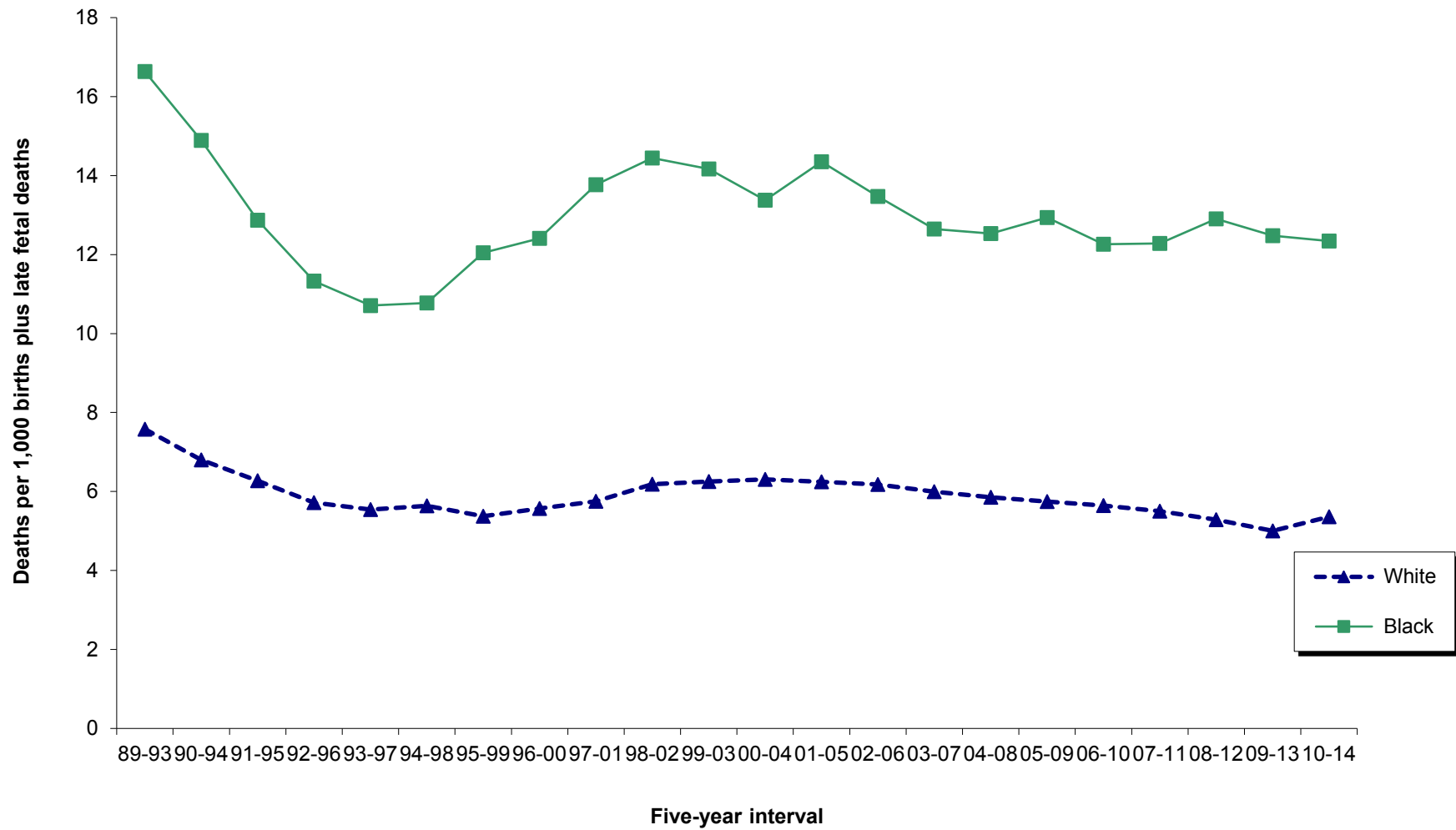
TABLE D-16
 FIVE-YEAR AVERAGE PERINATAL MORTALITY RATES BY RACE
 DELAWARE AND COUNTIES, 1996-2014

Area/ Race	1996 -2000	1997 -2001	1998 -2002	1999 -2003	2000 -2004	2001 -2005	2002 -2006	2003 -2007	2004 -2008	2005 -2009	2006 -2010	2007 -2011	2008 -2012	2009 -2013	2010 -2014
Delaware															
All Races	7.1	7.6	8.1	8.1	7.9	8.2	8.0	7.5	7.5	7.6	7.4	7.4	7.6	7.3	7.5
White	5.6	5.8	6.2	6.3	6.3	6.2	6.2	6.0	5.9	5.7	5.6	5.5	5.3	5.0	5.4
Black	12.4	13.8	14.4	14.2	13.4	14.3	13.5	12.6	12.5	12.9	12.3	12.3	12.9	12.5	12.3
Kent															
All Races	7.5	7.3	8.9	8.7	8.2	8.7	8.0	5.8	6.0	6.3	5.9	6.2	7.1	6.3	6.1
White	6.0	6.2	8.1	7.8	7.3	6.9	5.9	3.6	3.8	3.7	4.4	4.8	5.1	4.5	4.9
Black	12.9	11.7	11.8	12.1	10.7	13.8	13.7	11.5	11.8	13.7	10.4	10.0	12.4	11.1	9.2
New Castle															
All Races	7.3	7.9	8.3	8.5	8.3	8.5	8.3	8.1	8.1	8.2	8.0	8.3	8.4	8.1	8.3
White	5.3	5.6	5.8	6.2	6.3	6.4	6.3	6.4	6.3	6.4	5.7	5.8	5.7	5.3	5.4
Black	13.7	15.3	16.3	15.9	14.9	15.0	14.1	13.4	13.2	12.7	13.1	13.7	13.6	13.4	14.2
Sussex															
All Races	6.3	6.6	6.4	5.9	6.2	6.6	6.9	7.3	7.0	7.0	7.3	6.1	5.9	6.1	6.3
White	6.1	5.7	5.5	5.1	5.3	5.2	6.1	6.9	6.4	5.7	6.5	5.4	4.5	4.7	5.6
Black	6.6	9.7	9.6	9.1	9.8	12.0	10.3	10.7	10.6	12.9	10.8	8.9	10.6	10.2	8.5

Note: Perinatal mortality rate defined as: Infant deaths of less than 7 days and fetal deaths with gestation of 28 weeks or more, per 1,000 live births and specified fetal deaths. Peri_ra

Source: Delaware Health and Social Services Division of Public Health, Delaware Health Statistics Center

Figure D-4
Five-year Average Perinatal Mortality Rates by Race
Delaware, 1989-2014



Source: Delaware Health and Social Services, Division of Public Health, Delaware Health Statistics Center

TABLE D-17
NUMBER AND PERCENT OF INDUCED TERMINATIONS OF PREGNANCY BY SELECTED CHARACTERISTICS

DELAWARE, 2014

Characteristic	Number	Percent	Characteristic	Number	Percent
Total	2937	100.0%	Marital Status		
Place of Residence			Married	339	11.5%
Delaware	2468	84.0%	Single	2598	88.5%
Kent	411	14.0%	Unknown	0	0.0%
New Castle	1667	56.8%	Weeks of Gestation		
Sussex	390	13.3%	<7 Weeks	764	26.0%
Maryland	202	6.9%	7 Weeks	567	19.3%
New Jersey	42	1.4%	8 Weeks	512	17.4%
Pennsylvania	204	6.9%	9-10 Weeks	571	19.4%
Other State	21	0.7%	11-12 Weeks	292	9.9%
Age			13-15 Weeks	189	6.4%
<15	9	0.3%	16-20 Weeks	36	1.2%
15-17	121	4.1%	21+ Weeks	2	0.1%
18-19	245	8.3%	Unknown	4	0.1%
20-24	992	33.8%	Type of Procedure		
25-29	722	24.6%	Suction Curettage	1635	55.7%
30-34	488	16.6%	Medical (Nonsurgical)	1292	44.0%
35-39	261	8.9%	Intrauterine Installation	1	0.0%
40+	99	3.4%	Other	4	0.1%
Unknown	0	0.0%	Unknown	5	0.2%
Race			Previous Pregnancies		
White	1478	50.3%	None	766	26.1%
Black	1290	43.9%	1	588	20.0%
American Indian	7	0.2%	2	507	17.3%
Asian and Pacific Islander	81	2.8%	3+	1054	35.9%
Other Races	81	2.8%	Unknown	22	0.7%
Unknown	0	0.0%	Previous Live Births		
Hispanic Origin			None	1149	39.1%
Yes	355	12.1%	1	767	26.1%
No	2581	87.9%	2	566	19.3%
Unknown	1	0.0%	3+	438	14.9%
Level of Education			Unknown	17	0.6%
<9	81	2.8%	Previous Induced Abortions		
9-11	339	11.5%	None	1588	54.1%
H.S. Graduate	1365	46.5%	1	803	27.3%
1 to 3 College	677	23.1%	2	321	10.9%
4+ College	339	11.5%	3+	199	6.8%
Unknown	136	4.6%	Unknown	26	0.9%

Notes:

1. Suction Curettage includes Dilation and Evacuation.
2. Women of Hispanic origin may be of any race.
3. Percentages for each characteristic may not add to 100% due to rounding.
4. Percentages are based on the total number of induced terminations of pregnancy.

ABSUMM

Source: Delaware Health and Social Services, Division of Public Health, Delaware Health Statistics Center

TABLE D-18
NUMBER AND PERCENT OF INDUCED TERMINATIONS OF PREGNANCY BY PLACE OF RESIDENCE, RACE, AND AGE OF WOMAN

DELAWARE, 2014

Place of Residence/ Race	Age															
	Total		<18		18-19		20-24		25-29		30-34		35+		Unknown	
	Number	Percent	Number	Percent	Number	Percent	Number	Percent	Number	Percent	Number	Percent	Number	Percent	Number	Percent
All Terminations	2937	100.0	130	4.4	245	8.3	992	33.8	722	24.6	488	16.6	360	12.3	0	0.0
White	1478	100.0	60	4.1	103	7.0	462	31.3	385	26.0	261	17.7	207	14.0	0	0.0
Black	1290	100.0	65	5.0	128	9.9	477	37.0	297	23.0	194	15.0	129	10.0	0	0.0
Other	169	100.0	5	3.0	14	8.3	53	31.4	40	23.7	33	19.5	24	14.2	0	0.0
Delaware	2468	100.0	111	4.5	205	8.3	840	34.0	612	24.8	411	16.7	289	11.7	0	0.0
White	1168	100.0	46	3.9	80	6.8	369	31.6	316	27.1	205	17.6	152	13.0	0	0.0
Black	1156	100.0	61	5.3	113	9.8	424	36.7	264	22.8	177	15.3	117	10.1	0	0.0
Other	144	100.0	4	2.8	12	8.3	47	32.6	32	22.2	29	20.1	20	13.9	0	0.0
Kent	411	100.0	16	3.9	25	6.1	144	35.0	117	28.5	76	18.5	33	8.0	0	0.0
White	189	100.0	4	2.1	7	3.7	58	30.7	61	32.3	43	22.8	16	8.5	0	0.0
Black	197	100.0	9	4.6	14	7.1	80	40.6	50	25.4	28	14.2	16	8.1	0	0.0
Other	25	100.0	3	12.0	4	16.0	6	24.0	6	24.0	5	20.0	1	4.0	0	0.0
New Castle	1667	100.0	83	5.0	142	8.5	562	33.7	387	23.2	277	16.6	216	13.0	0	0.0
White	723	100.0	34	4.7	46	6.4	227	31.4	179	24.8	129	17.8	108	14.9	0	0.0
Black	839	100.0	48	5.7	88	10.5	302	36.0	184	21.9	126	15.0	91	10.8	0	0.0
Other	105	100.0	1	1.0	8	7.6	33	31.4	24	22.9	22	21.0	17	16.2	0	0.0
Sussex	390	100.0	12	3.1	38	9.7	134	34.4	108	27.7	58	14.9	40	10.3	0	0.0
White	256	100.0	8	3.1	27	10.5	84	32.8	76	29.7	33	12.9	28	10.9	0	0.0
Black	120	100.0	4	3.3	11	9.2	42	35.0	30	25.0	23	19.2	10	8.3	0	0.0
Other	14	100.0	0	0.0	0	0.0	8	57.1	2	14.3	2	14.3	2	14.3	0	0.0
Other State	469	100.0	19	4.1	40	8.5	152	32.4	110	23.5	77	16.4	71	15.1	0	0.0
White	310	100.0	14	4.5	23	7.4	93	30.0	69	22.3	56	18.1	55	17.7	0	0.0
Black	134	100.0	4	3.0	15	11.2	53	39.6	33	24.6	17	12.7	12	9.0	0	0.0
Other	25	100.0	1	4.0	2	8.0	6	24.0	8	32.0	4	16.0	4	16.0	0	0.0

ABRACAGE

Notes:

1. Percentages may not add to 100% due to rounding.
2. Percentages are calculated based upon the total number of induced terminations of pregnancy in each race category.
3. Percentages for the race category "Other" may be misleading due to the small number of induced terminations of pregnancy in this category.

Source: Delaware Health and Social Services, Division of Public Health, Delaware Health Statistics Center

TABLE D-19.
NUMBER OF INDUCED TERMINATIONS OF PREGNANCY BY PLACE OF RESIDENCE, WEEKS OF
GESTATION, AND AGE OF WOMAN,
DELAWARE, 2014

Place of Residence/ Weeks	AGE						
	Total	<20	20-24	25-29	30-34	35-39	40+
All Terminations	2937	375	992	722	488	261	99
<7 Weeks	764	58	253	215	129	71	38
7 Weeks	567	75	184	143	97	51	17
8 Weeks	512	66	163	128	87	54	14
9-10 Weeks	571	89	201	120	95	51	15
11-12 Weeks	292	43	119	69	43	13	5
13-15 Weeks	189	40	61	38	29	17	4
16-20 Weeks	36	3	11	6	7	3	6
21+ Weeks	2	1	0	1	0	0	0
Unknown	4	0	0	2	1	1	0
Delaware	2468	316	840	612	411	214	75
<7 Weeks	632	48	215	182	102	57	28
7 Weeks	474	62	152	122	81	44	13
8 Weeks	431	52	140	105	80	42	12
9-10 Weeks	499	82	174	104	82	43	14
11-12 Weeks	250	34	103	61	37	12	3
13-15 Weeks	156	34	50	33	24	13	2
16-20 Weeks	21	3	6	2	5	2	3
21+ Weeks	2	1	0	1	0	0	0
Unknown	3	0	0	2	0	1	0
Kent	411	41	144	117	76	24	9
<7 Weeks	99	4	38	29	14	11	3
7 Weeks	72	7	24	25	10	5	1
8 Weeks	84	10	29	23	17	3	2
9-10 Weeks	84	11	27	19	21	5	1
11-12 Weeks	40	4	20	10	5	0	1
13-15 Weeks	28	5	5	9	8	0	1
16-20 Weeks	3	0	1	1	1	0	0
21+ Weeks	0	0	0	0	0	0	0
Unknown	1	0	0	1	0	0	0
New Castle	1667	225	562	387	277	155	61
<7 Weeks	435	35	141	123	75	39	22
7 Weeks	317	40	102	76	59	28	12
8 Weeks	287	37	94	59	55	33	9
9-10 Weeks	342	61	124	65	47	33	12
11-12 Weeks	166	28	64	39	24	9	2
13-15 Weeks	100	22	32	22	13	10	1
16-20 Weeks	17	2	5	1	4	2	3
21+ Weeks	1	0	0	1	0	0	0
Unknown	2	0	0	1	0	1	0
Sussex	390	50	134	108	58	35	5
<7 Weeks	98	9	36	30	13	7	3
7 Weeks	85	15	26	21	12	11	0
8 Weeks	60	5	17	23	8	6	1
9-10 Weeks	73	10	23	20	14	5	1
11-12 Weeks	44	2	19	12	8	3	0
13-15 Weeks	28	7	13	2	3	3	0
16-20 Weeks	1	1	0	0	0	0	0
21+ Weeks	1	1	0	0	0	0	0
Unknown	0	0	0	0	0	0	0
Other State	469	59	152	110	77	47	24
<7 Weeks	132	10	38	33	27	14	10
7 Weeks	93	13	32	21	16	7	4
8 Weeks	81	14	23	23	7	12	2
9-10 Weeks	72	7	27	16	13	8	1
11-12 Weeks	42	9	16	8	6	1	2
13-15 Weeks	33	6	11	5	5	4	2
16-20 Weeks	15	0	5	4	2	1	3
21+ Weeks	0	0	0	0	0	0	0
Unknown	1	0	0	0	1	0	0

Note:Weeks of gestation are based on clinical estimate.

Source: Delaware Health and Social Services, Division of Public Health, Delaware Health Statistics Center

TABLE D-20.
NUMBER OF INDUCED TERMINATIONS OF PREGNANCY BY PLACE OF RESIDENCE, AGE OF WOMAN,
AND NUMBER OF PREVIOUS PREGNANCIES,
DELAWARE, 2014

Place of Residence/Age	Number of Previous Pregnancies					
	Total	None	1	2	3+	Not Stated
All Terminations	2937	766	588	507	1054	22
<20	375	268	74	23	10	0
20-24	992	342	256	192	192	10
25-29	722	115	163	133	307	4
30-34	488	34	54	91	305	4
35-39	261	7	27	47	178	2
40+	99	0	14	21	62	2
Unknown	0	0	0	0	0	0
Delaware	2468	615	486	427	918	22
<20	316	224	65	19	8	0
20-24	840	280	212	169	169	10
25-29	612	83	138	110	277	4
30-34	411	23	42	76	266	4
35-39	214	5	22	37	148	2
40+	75	0	7	16	50	2
Unknown	0	0	0	0	0	0
Kent	411	102	81	70	156	2
<20	41	31	9	0	1	0
20-24	144	52	41	23	27	1
25-29	117	17	22	22	55	1
30-34	76	2	6	17	51	0
35-39	24	0	2	8	14	0
40+	9	0	1	0	8	0
Unknown	0	0	0	0	0	0
New Castle	1667	418	327	290	612	20
<20	225	157	45	16	7	0
20-24	562	192	136	117	108	9
25-29	387	48	91	71	174	3
30-34	277	17	31	45	180	4
35-39	155	4	18	27	104	2
40+	61	0	6	14	39	2
Unknown	0	0	0	0	0	0
Sussex	390	95	78	67	150	0
<20	50	36	11	3	0	0
20-24	134	36	35	29	34	0
25-29	108	18	25	17	48	0
30-34	58	4	5	14	35	0
35-39	35	1	2	2	30	0
40+	5	0	0	2	3	0
Unknown	0	0	0	0	0	0
Other State	469	151	102	80	136	0
<20	59	44	9	4	2	0
20-24	152	62	44	23	23	0
25-29	110	32	25	23	30	0
30-34	77	11	12	15	39	0
35-39	47	2	5	10	30	0
40+	24	0	7	5	12	0
Unknown	0	0	0	0	0	0

Source: Health and Social Services, Division of Public Health, Delaware Health Statistics Center

TABLE D-21
NUMBER OF INDUCED TERMINATIONS OF PREGNANCY BY PLACE OF RESIDENCE, AGE OF WOMAN,
AND NUMBER OF PREVIOUS LIVE BIRTHS,
DELAWARE, 2014

Place of Residence/ Age	Number of Previous Live Births					
	Total	None	1	2	3+	Not Stated
All Terminations	2937	1149	767	566	438	17
<20	375	316	46	12	1	0
20-24	992	513	284	137	51	7
25-29	722	226	224	158	112	2
30-34	488	65	125	151	141	6
35-39	261	23	63	76	97	2
40+	99	6	25	32	36	0
Unknown	0	0	0	0	0	0
Delaware	2468	930	656	481	386	15
<20	316	265	41	9	1	0
20-24	840	421	247	119	46	7
25-29	612	172	195	140	103	2
30-34	411	52	103	127	125	4
35-39	214	16	54	62	80	2
40+	75	4	16	24	31	0
Unknown	0	0	0	0	0	0
Kent	411	155	114	79	62	1
<20	41	36	4	1	0	0
20-24	144	81	41	16	6	0
25-29	117	33	39	24	21	0
30-34	76	5	23	23	24	1
35-39	24	0	6	12	6	0
40+	9	0	1	3	5	0
Unknown	0	0	0	0	0	0
New Castle	1667	630	446	325	252	14
<20	225	186	30	8	1	0
20-24	562	284	166	79	26	7
25-29	387	103	131	89	62	2
30-34	277	39	65	86	84	3
35-39	155	14	41	43	55	2
40+	61	4	13	20	24	0
Unknown	0	0	0	0	0	0
Sussex	390	145	96	77	72	0
<20	50	43	7	0	0	0
20-24	134	56	40	24	14	0
25-29	108	36	25	27	20	0
30-34	58	8	15	18	17	0
35-39	35	2	7	7	19	0
40+	5	0	2	1	2	0
Unknown	0	0	0	0	0	0
Other State	469	219	111	85	52	2
<20	59	51	5	3	0	0
20-24	152	92	37	18	5	0
25-29	110	54	29	18	9	0
30-34	77	13	22	24	16	2
35-39	47	7	9	14	17	0
40+	24	2	9	8	5	0
Unknown	0	0	0	0	0	0

Source: Delaware Health and Social Services, Division of Public Health, Delaware Health Statistics Center

TABLE D-22.
NUMBER OF INDUCED TERMINATIONS OF PREGNANCY BY PLACE OF RESIDENCE, AGE OF WOMAN,
AND NUMBER OF PREVIOUS INDUCED TERMINATIONS, DELAWARE, 2014

Place of Residence/ Age	Number of Previous Induced Terminations					
	Total	None	1	2	3+	Not Stated
All Terminations	2937	1588	803	321	199	26
<20	375	319	47	6	3	0
20-24	992	611	266	79	27	9
25-29	722	328	225	101	64	4
30-34	488	186	157	72	66	7
35-39	261	101	79	47	31	3
40+	99	43	29	16	8	3
Unknown		0	0	0	0	0
Delaware	2468	1308	683	283	169	25
<20	316	271	38	4	3	0
20-24	840	512	226	70	23	9
25-29	612	266	194	91	57	4
30-34	411	141	144	65	55	6
35-39	214	85	60	43	23	3
40+	75	33	21	10	8	3
Unknown	0	0	0	0	0	0
Kent	411	218	113	51	27	2
<20	41	36	5	0	0	0
20-24	144	85	42	11	5	1
25-29	117	53	33	22	8	1
30-34	76	27	27	11	11	0
35-39	24	13	5	6	0	0
40+	9	4	1	1	3	0
Unknown	0	0	0	0	0	0
New Castle	1667	865	460	198	121	23
<20	225	192	27	3	3	0
20-24	562	346	141	53	14	8
25-29	387	158	125	58	43	3
30-34	277	87	100	45	39	6
35-39	155	57	48	30	17	3
40+	61	25	19	9	5	3
Unknown	0	0	0	0	0	0
Sussex	390	225	110	34	21	0
<20	50	43	6	1	0	0
20-24	134	81	43	6	4	0
25-29	108	55	36	11	6	0
30-34	58	27	17	9	5	0
35-39	35	15	7	7	6	0
40+	5	4	1	0	0	0
Unknown	0	0	0	0	0	0
Other State	469	280	120	38	30	1
<20	59	48	9	2	0	0
20-24	152	99	40	9	4	0
25-29	110	62	31	10	7	0
30-34	77	45	13	7	11	1
35-39	47	16	19	4	8	0
40+	24	10	8	6	0	0
Unknown	0	0	0	0	0	0

Source: Delaware Health and Social Services, Division of Public Health, Delaware Health Statistics Center