

**2021 DELAWARE ASSISTED LIVING
UTILIZATION STATISTICAL REPORT
(DALUSR)**

May 2022

**Delaware Health and Social Services
Delaware Health Care Commission
Herman M. Holloway Sr. Health and Social Services Campus
1901 N. Dupont Highway
New Castle, DE 19720**



DELAWARE HEALTH AND SOCIAL SERVICES

EXECUTIVE SUMMARY

In 2021, 32 Assisted Living (AL) facilities were licensed and operational in Delaware; additionally, two additional Rest Residential (RR) facilities, which do not fall under licensure requirements for the State, provided long-term care services in Delaware. With the exception of one AL facility (Meadowcrest at Middletown) which obtained provisional licensure in September of 2021, the 2021 Delaware Assisted Living Utilization Statistical Report (DALUSR) reflects 2021 utilization data from all AL/RR facilities in Delaware. In 2021, Delaware's 34 AL/RR facilities operated 2,003 units and 2,320 licensed beds. The majority of AL/RR facilities (24 of 34) are in New Castle County; Kent and Sussex County are home to four and six AL/RR facilities, respectively.

After declining sharply in 2020 amid the COVID-19 pandemic, the number of annual move-ins to Delaware's AL/RR facilities rebounded in 2021. In 2021, 809 residents moved into AL/RR facilities, a 43.4% increase in move-ins compared to 2020; however, the number of move-ins in 2021 fell 9.7% short of the number of move-ins in 2019, the year prior to the pandemic. White residents accounted for 95.5% of all 2021 Delaware AL/RR move-ins. Black residents and residents of other races accounted for 3.8% and 0.6% of 2021 move-ins, respectively. Fifty-four percent of AL/RR move-ins represent individuals ages 85+; nearly 30% of move-ins were among residents ages 75-84. Approximately 12% of 2021 AL/RR move-ins were individuals ages 65-74, and the youngest category of AL/RR residents – those under age 65 – accounted for 4.4% of 2021 move-ins. The largest proportion of resident move-ins represented residents transitioning to an AL/RR facility from their own home or a relative's home (59.5%).

From 2020-2021, the number of move-outs from Delaware AL/RR facilities declined 2.0%, falling from 751 to 736. This slight decline in move-outs may represent a reduction in AL/RR resident deaths due to COVID-19. White residents accounted for 97.4% of AL/RR move-outs. Black residents and residents of other races accounted for 1.5% and 1.1% of 2020 AL/RR move-outs, respectively. Individuals ages 85+ accounted for 67.0% of move-outs from AL/RR facilities. Twenty-three percent of move-outs were individuals ages 75-84. Approximately 6% of 2021 AL/RR move-outs were individuals ages 65-74. The youngest category of AL/RR residents – those under age 65 – accounted for 3.8% of 2021 move-outs. In 2021, the largest proportion of resident move-outs (42.9%) were due to death. From 2020-2021, the proportion of move-outs due to death declined from 47.3% to 42.9%.

TABLE OF CONTENTS

INTRODUCTION	1
STATEWIDE POPULATION PROJECTIONS	2
PART 1: 2021 DELAWARE AL/RR UTILIZATION STATISTICS	4
NUMBER OF FACILITIES, UNITS, AND BEDS	5
BILLABLE PATIENT DAYS	5
OCCUPANCY	5
RESIDENT MOVE-INS.....	6
RESIDENT MOVE-OUTS	7
SOURCE OF REFERRAL AND MOVE-OUT DISPOSITION	8
SOURCE OF PAYMENT	8
PART 2: 2021 FACILITY-LEVEL AL/RR UTILIZATION STATISTICS.....	10
APPENDIX A: 2021 AL/RR TRENDS AMONG THE UNDER 65 POPULATION.....	37

ACKNOWLEDGEMENTS

This report was funded by the Delaware Health and Social Services, Health Care Commission and is the product of collaborative support from the Delaware Health Care Facilities Association, the Division of Services for Aging and Adults with Physical Disabilities, and Delaware Assisted Living and Rest Residential Facilities. The Health Care Commission thanks these stakeholders and other subject matter experts who provided background information, analysis, and feedback to inform the development of this report.

INTRODUCTION

This, the 11th edition of the Delaware Assisted Living Utilization Statistical Report (DALUSR), summarizes 2021 data submitted by Delaware Assisted Living (AL) and Rest Residential (RR) facilities. Information in this report is presented in accordance with Title 16, Chapter 20 of Delaware Code (Uniform Health Data):

“It is the policy of this State to foster appropriate and efficient use of health-care resources by requiring information for evaluating utilization patterns and costs to the community and the State for healthcare services.

This information shall be available to health-care purchasers, health-care insurers, health-care providers, health-care planners, and the general public without compromise of patient confidentiality. Such information will improve decision making with regard to access, identified needs, patterns of health-care delivery, charges and use of health-care services.”

(16 DE Code §2001)

AL/RR facilities are an important component of the long-term care (LTC) landscape. AL facilities provide a combination of housing, supportive services, supervision, personal assistance, and health care services designed to meet residents’ needs for assistance with activities of daily living. RR facilities provide resident beds and personal care services for individuals who are able to manage activities of daily living without assistance. AL/RR facilities feature designs that prioritize residents’ quality of life, socialization, independence, and safety, and AL/RR staff strive to meet the social, emotional, intellectual, and spiritual health of residents while maintaining residents’ self-esteem and roles as contributing members of the community.

The 2021 DALUSR presents data in two main sections. Part 1, Delaware Assisted Living and Rest Residential (AL/RR) Statistics, highlights utilization trends at the state- and county-levels including annual move-ins and move-outs, resident billable days, occupancy rates, source of referral / move-out disposition, and source of payment. Part 2, Facility-Level Utilization Statistics, presents these metrics at the facility-level.

The 2021 DALUSR highlights the ongoing impact of the COVID-19 pandemic on Delaware AL/RR utilization trends. Nationwide, the COVID-19 pandemic profoundly impacted nursing homes and other long-term care facilities that cared for individuals most vulnerable to the effects of the coronavirus. In 2021, Delaware AL/RR facilities largely rebounded from the effects of the pandemic; however, 2021 AL/RR utilization metrics have not yet fully returned to their pre-pandemic (i.e., 2019) values. Future iterations of

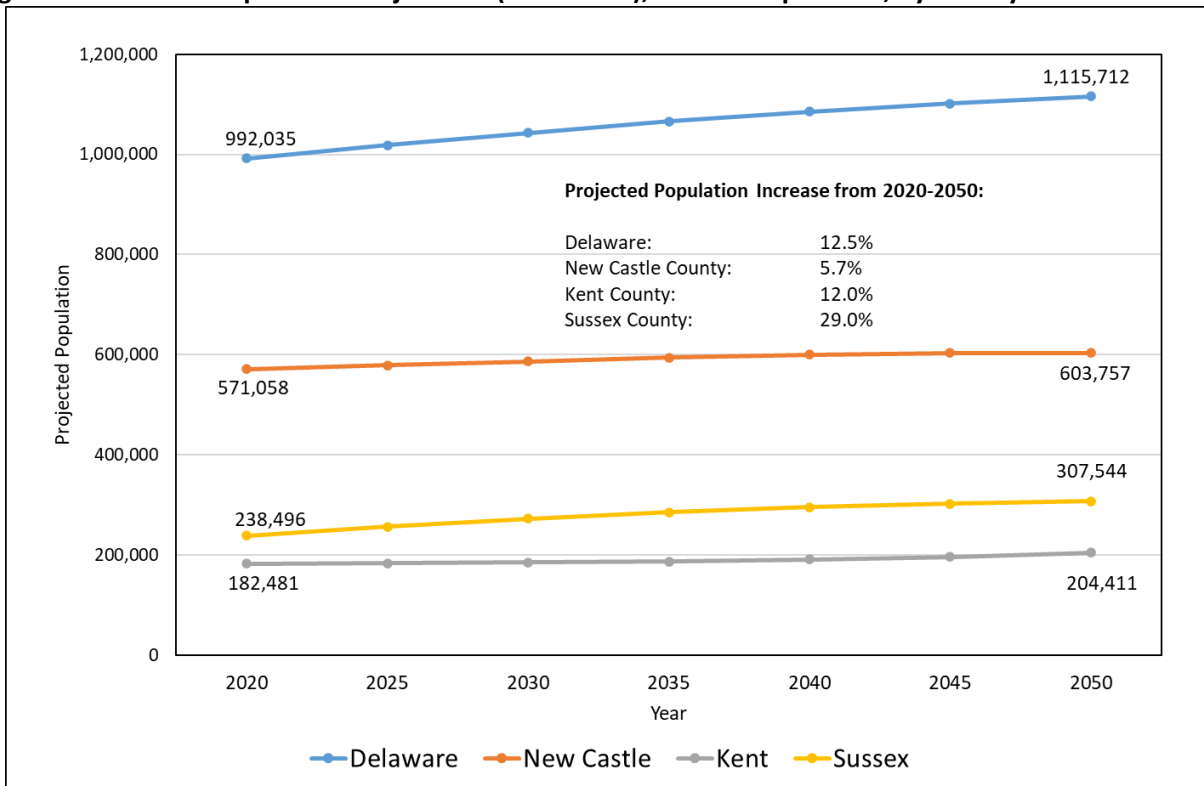
the DALRRUSR will monitor the long-term impacts of the COVID-19 pandemic on nursing home utilization trends.

STATEWIDE POPULATION PROJECTIONS

The growing size and the changing demographics of Delaware’s population are central to the understanding of the distribution of AL/RR facilities and the number of licensed beds. DHCC analyzed 2021 Delaware Population Consortium data to provide the context within which to evaluate Delaware’s ability to meet AL/RR facility bed demand. Figure 1 shows the projected increase of Delaware’s total population from 2020 to 2050. Figure 2 shows the projected population increase over the same time period among Delawareans ages 65 and older.

Between 2020 and 2050, Delaware’s total population is expected to increase 12.5% (from 992,035 in 2020 to 1,115,712 in 2050). Overall population growth is distributed unevenly across Delaware’s counties. From 2020-2050, New Castle and Kent Counties are expected to experience a 5.7% and 12.0% increase in total population, respectively; total population growth for Sussex County is estimated at 29.0% for the same time period.

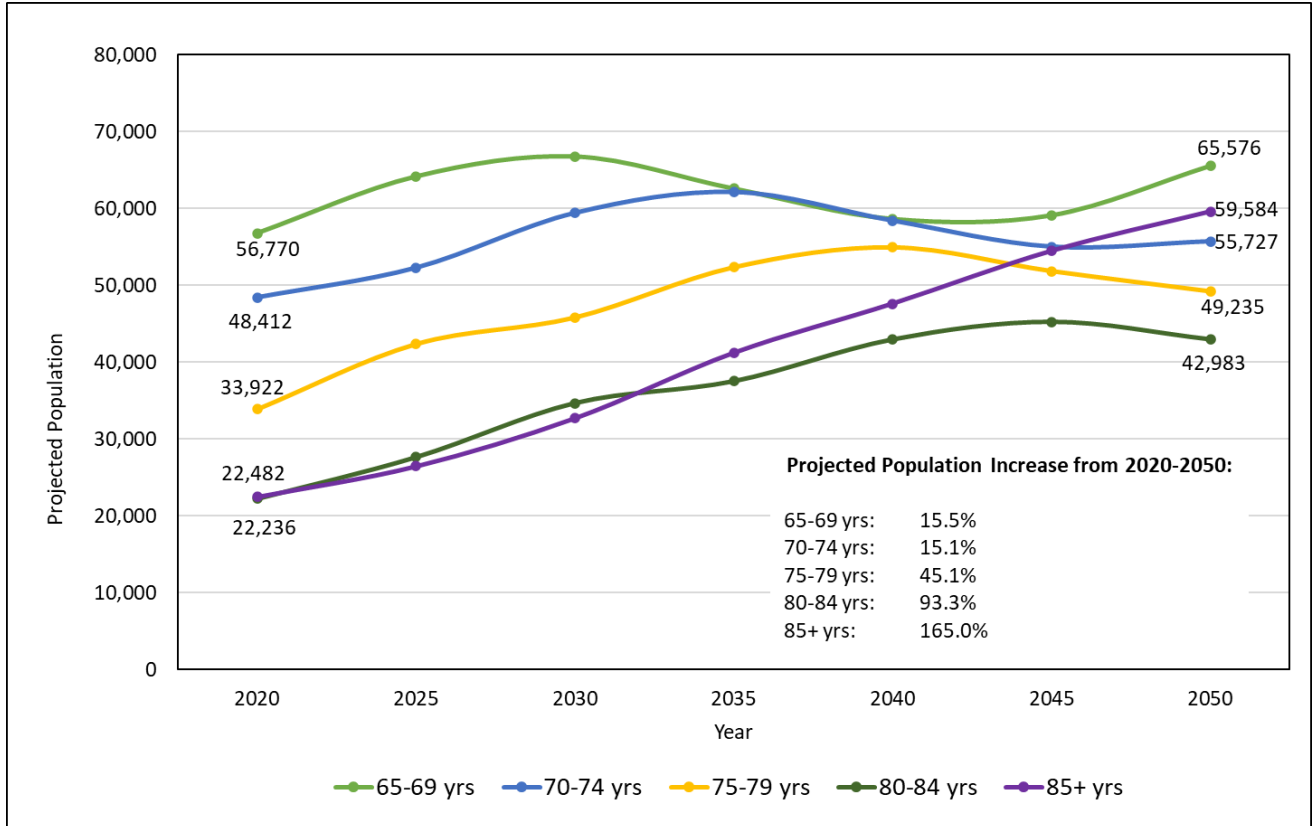
Figure 1: Delaware Population Projections (2020-2050), Overall Population, by County



Source: Annual Population Projections, Delaware Population Consortium, Version 2021.0, October 2021.

Projected population growth is more dramatic among older Delawareans. From 2020 to 2050, the statewide population of Delawareans ages 65 and older is expected to increase 48.6% (from 183,822 to 273,105). The most dramatic increases in cohort size are projected among the oldest subpopulations. From 2020 to 2050, the number of Delawareans ages 65-69, 75-79, 80-84, and 85+ are projected to increase 15.5%, 15.1%, 45.1%, 93.3%, and 165.0%, respectively (Figure 2).

Figure 2: Delaware Population Projections (2020-2050), Age 65+, by Age Cohort



Source: Annual Population Projections, Delaware Population Consortium, Version 2021.0, October 2021.

PART 1: 2021 DELAWARE AL/RR UTILIZATION STATISTICS

Part 1 summarizes aggregate utilization data for the following metrics:

- a. Number of Facilities, Units, and Licensed Beds
- b. Billable Patient Days
- c. Occupancy Rate
- d. Number of Resident Move-Ins
- e. Number of Resident Move-Outs
- f. Source of Referral / Move-Out Disposition
- g. Source of Payment

Table 1 presents 2019-2021 data to highlight recent changes in AL/RR utilization metrics.

Table 1: Delaware AL/RR Facility Metrics, by County, 2019-2021

Metric	Year	County			Total
		New Castle	Kent	Sussex	
Facilities	2019	24	4	6	34
	2020	24	4	6	34
	2021	24	4	6	34
Units	2019	1,219	267	436	1,922
	2020	1,221	267	434	1,922
	2021	1,224	267	512	2,003
Licensed Beds	2019	1,391	378	485	2,254
	2020	1,390	378	466	2,234
	2021	1,381	378	561	2,320
Billable Patient Days	2019	388,865	105,208	139,075	633,148
	2020	379,497	100,262	139,518	619,277
	2021	380,282	89,357	137,970	602,514
Occupancy Rate	2019	76.6%	76.3%	78.6%	77.0%
	2020	74.8%	72.7%	82.0%	75.9%
	2021	75.4%	64.8%	64.9%	71.2%
Move-Ins	2019	570	136	190	896
	2020	371	78	115	564
	2021	505	108	196	809
Move-Outs	2019	539	164	154	857
	2020	469	145	137	751
	2021	435	135	166	736

Note: Table 1 does not include 2021 data for Meadowcrest at Middletown Assisted Living for the following metrics: units, licensed beds, billable patient days, occupancy rate, move-ins, and move-outs.

NUMBER OF FACILITIES, UNITS, AND BEDS

AL/RR facilities are comprised of units and rooms providing individual (and occasionally, dual occupancy) living space for residents. In 2021, 32 AL facilities and two RR facilities were operational in the State of Delaware.¹ Collectively, Delaware's 34 AL/RR facilities operated 2,003 units and 2,320 licensed beds in 2021. Most AL/RR facilities (N=24; 71%) are in New Castle County; Kent and Sussex County are home to four and six AL/RR facilities, respectively.

BILLABLE PATIENT DAYS

A commonly-used measure of AL/RR utilization is the number of billable patient days generated by a facility over a given time period. A billable patient day represents a unit of time (i.e., one day) during which the facility's services are used by one resident. For example, if a facility has 100 residents on a day, the facility has generated 100 billable patient days for that 24-hour period. If a facility's number of billable patient days increases from one time period to the next, it is an indication that the facility has gained residents, residents are residing in the facility for longer periods of time, or a combination of these two factors. Mathematically, billable patient days per facility per year are calculated by summing each facility's monthly billable patient days over a 12-month period. In 2021, Delaware AL/RR facilities generated a total of 602,514 billable patient days, a 2.7% decline from the number of billable patient days generated in 2020.

OCCUPANCY

A facility's occupancy rate reflects the percentage of available beds occupied by residents throughout the reporting year. Occupancy rates were weighted based on the number of days a facility was open during the reporting year. Mathematically, for facilities that were open 365 days of the reporting year,

Weighted Occupancy Rate = $[(\text{Number of Billable Patient Days}) / (\text{Number of Licensed Bed Days})] * 100\%$.

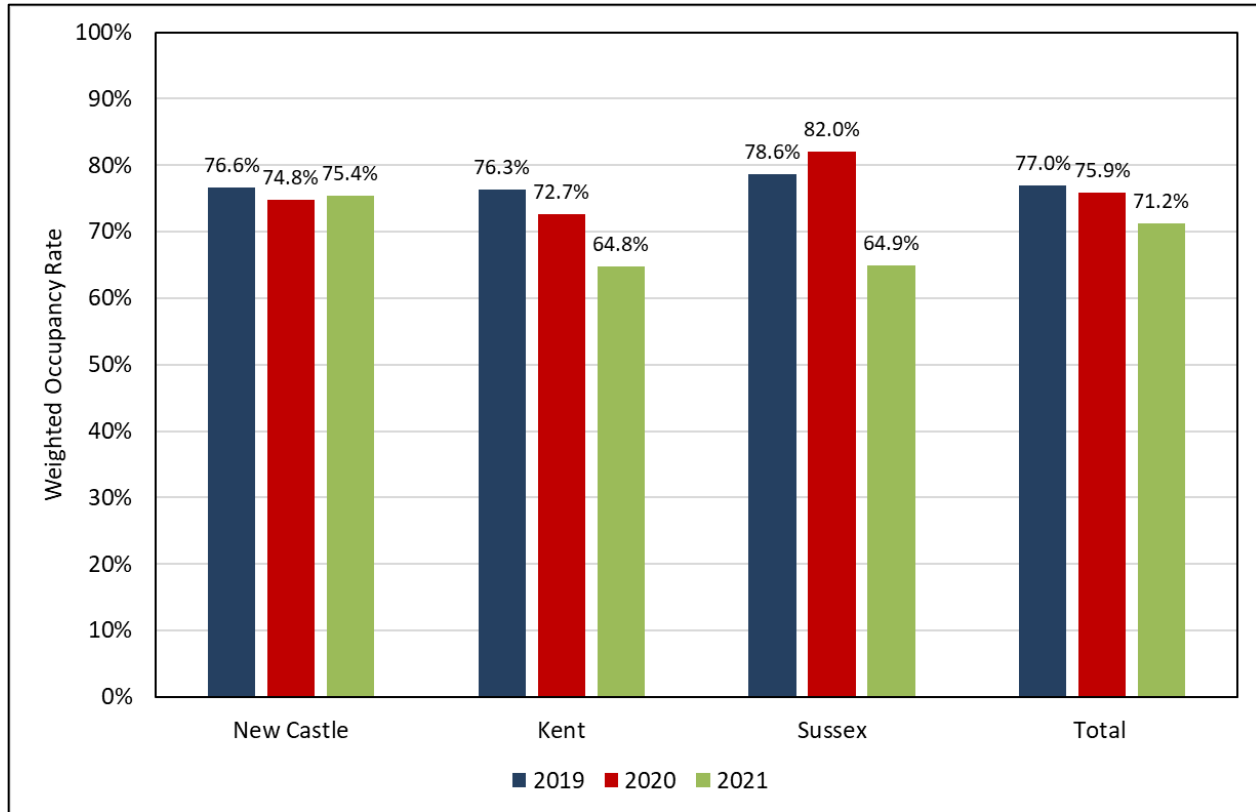
If a facility was open fewer than 365 days of the reporting year, the same weighted occupancy formula was used with the exception that (Number of Licensed Bed Days) equaled the number of licensed beds multiplied by the actual number of days the facility was open.

In 2021, AL/RR facilities in New Castle, Kent, and Sussex Counties operated at 75.4%, 64.8%, and 64.9% occupancy, respectively. Relative to 2020, AL/RR occupancy rates remained stable in New Castle County and declined in Kent and Sussex Counties (Figure 3). The decline in occupancy rate for Sussex County AL/RR facilities reflects a large expansion in the number of licensed beds for PeachTree Health Group; in mid-2021, this facility increased its licensed beds from 20 to 96. Increasing the total number of licensed AL/RR beds in a

¹ Meadowcrest at Middletown, a 90-bed facility located in New Castle County, received its provisional license on September 1, 2021. Utilization data for this facility are not included in the 2021 DALUSR.

county, even with an increase in the number of move-ins in 2021 relative to 2020, may produce a net decrease in facility occupancy.

Figure 3: Delaware AL/RR Weighted Occupancy Rates, by County, 2019-2021



RESIDENT MOVE-INS

After declining sharply in 2020 amid the COVID-19 pandemic, the number of annual move-ins to Delaware’s AL/RR facilities rebounded in 2021. In 2021, 809 residents moved into AL/RR facilities, a 43.4% increase in move-ins compared to 2020; however, the number of move-ins in 2021 fell 9.7% short of the number of move-ins in 2019, the year prior to the pandemic. White residents accounted for 95.5% of all 2021 Delaware AL/RR move-ins (Table 2). Black residents and residents of other races accounted for 3.8% and 0.6% of 2021 move-ins, respectively. Fifty-four percent of AL/RR move-ins represent individuals ages 85+; nearly 30% of move-ins were among residents ages 75-84. Approximately 12% of 2021 AL/RR move-ins were individuals ages 65-74, and the youngest category of AL/RR residents – those under age 65 – accounted for 4.4% of 2021 move-ins. Refer to Appendix A for further information on Delaware AL/RR move-ins and move-outs among the Under 65 population.

Table 2: Number (Percentage) of Delaware AL/RR Move-Ins, by Race and Age, 2021

Race	Age				Total (by race)
	Under 65	65-74 yrs.	75-84 yrs.	85+ yrs.	
White	32 (4.1%)	87 (11.3%)	230 (29.8%)	424 (54.9%)	773 (100.0%)
Black	4 (12.9%)	7 (22.6%)	9 (29.0%)	11 (35.5%)	31 (100.0%)
Other	0 (0.0%)	0 (0.0%)	3 (60.0%)	2 (40.0%)	5 (100.0%)
Total (by age)	36 (4.4%)	94 (11.6%)	242 (29.9%)	437 (54.0%)	809 (100.0%)

RESIDENT MOVE-OUTS

Statewide, 736 residents moved out of Delaware AL/RR facilities in 2020, a 2.0% decline in the number of move-outs relative to 2021. Move-out statistics mirror move-in statistics in terms of patient race and age (Table 3). White residents accounted for 97.4% of Delaware AL/RR move-outs in 2021. Black residents and residents of other races accounted for 1.5% and 1.1% of 2020 AL/RR move-outs, respectively. Individuals ages 85+ accounted for 67.0% of move-outs from AL/RR facilities. Twenty-three percent of move-outs were individuals ages 75-84. Approximately 6% of 2021 AL/RR move-outs were individuals ages 65-74. The youngest category of AL/RR residents – those under age 65 – accounted for 3.8% of 2021 move-outs.

Table 3: Percentage of Total Delaware AL/RR Move-Outs, by Race and Age, 2021

Race	Age				Total (by race)
	Under 65	65-74 yrs.	75-84 yrs.	85+ yrs.	
White	27 (3.8%)	41 (5.7%)	169 (23.6%)	480 (66.9%)	717 (100.0%)
Black	1 (9.1%)	2 (18.2%)	1 (9.1%)	7 (63.6%)	11 (100.0%)
Other	0 (0.0%)	0 (0.0%)	2 (25.0%)	6 (75.0%)	8 (100.0%)
Total (by age)	28 (3.8%)	43 (5.8%)	172 (23.4%)	493 (67.0%)	736 (100.0%)

SOURCE OF REFERRAL AND MOVE-OUT DISPOSITION

In 2021, 59.5% of AL/RR move-ins represented individuals transitioning from their own home or a relative’s home (Table 4); 19.0% and 11.2% of move-ins represented individuals transitioning to an AL/RR facility from a nursing home or an acute care hospital, respectively. In 2021, 42.8% of move-outs from AL/RR facilities represented resident deaths, a decrease in the proportion of move-outs due to death relative to 2020 (47.3%).

Table 4: Number (Percentage) of Delaware AL/RR Move-Ins (by Source of Referral) and Move-Outs (by Disposition), 2021

	Move-Ins By Source of Referral	Move-Outs By Disposition
Own or Relative’s Home	481 (59.5%)	88 (12.0%)
Acute Care Hospital	91 (11.2%)	41 (5.6%)
Nursing Home	154 (19.0%)	231 (31.4%)
Other AL/RR Facility	52 (6.4%)	44 (6.0%)
Death	---	315 (42.8%)
Other	31 (31.0%)	17 (2.3%)
Total	809 (100.0%)	736 (100.0%)

SOURCE OF PAYMENT

In 2021, most AL/RR residents (89.2%) self-paid for their care (Table 5). In New Castle County, the proportion of AL/RR residents who self-paid for their care (94.4%) was comparatively higher than for Kent and Sussex Counties (80.3% and 81.4%, respectively). Statewide, 10.3% of AL/RR residents utilized Medicaid to pay for their residential stays at AL/RR facilities; the proportion of AL/RR residents who utilized Medicaid was comparatively lower in New Castle County (5.5%) than in Kent and Sussex Counties (17.0% and 18.6%, respectively).

Table 5: Percentage of Delaware AL/RR Residents by Payment Source, 2021

	Medicaid	Self-Pay	Other	Total
New Castle County	5.5%	94.4%	0.1%	100.0%
Kent County	17.0%	80.3%	2.7%	100.0%
Sussex County	18.6%	81.4%	0.0%	100.0%
Total	10.3%	89.2%	0.5%	100.0%

PART 2: 2021 FACILITY-LEVEL AL/RR UTILIZATION STATISTICS

Table 6
Total Billable Resident Days by Facility, 2021

AL/RR Facility	2021 Resident Days	AL/RR Facility	2021 Resident Days
New Castle County		Kent County	
Arden Courts of Wilmington	18,866	Brookdale Dover	21,701
Brookdale Hockessin	16,663	Dover Place	19,122
Forwood Manor	7,234	State Street Assisted Living	29,826
Foulk Manor North	11,974	Westminster Village	18,708
Foulk Manor South	11,923	Kent County Total	89,357
Gilpin Hall	2,888		
HarborChase of Wilmington	32,870	Sussex County	
Ingleside Assisted Living	19,200	Brandywine Sr. Living at Fenwick Island	28,459
Ivy Gables	8,164	Brandywine Sr. Living at Seaside Point	37,757
Jeanne Jugan Residence	3,275	Milford Place	26,060
Lodge Lane	16,183	OakBridge Terrace at Manor House	16,504
Millcroft Assisted Living	6,715	PeachTree Health Group	10,100
OakBridge Terrace at Cokesbury Village	9,966	The Moorings at Lewes	13,995
OakBridge Terrace at Country House	10,241	Sussex County Total	132,875
Paramount Senior Living	31,243		
Rockland Place	33,250	Total All Facilities	602,514
Serenity Gardens	5,505		
Shipleigh Manor	4,809		
Somerford House	33,191		
Somerford Place	14,622		
Sunrise Assisted Living of Wilmington	24,264		
The Lorelton	26,346		
The Summit	30,890		
New Castle County Total	380,282		

**Table 7
Weighted Occupancy Rates by Facility and County, 2021**

AL/RR Facility	Billable Resident Days 2021	Number of Licensed Beds 2021	Licensed Bed Days 2021	Weighted Occupancy Rate 2021
New Castle County				
Arden Courts of Wilmington	18,866	56	20,440	92.3%
Brookdale Hockessin	16,663	66	24,090	69.2%
Forwood Manor	7,234	37	13,505	53.6%
Foulk Manor North	11,974	44	16,060	74.6%
Foulk Manor South	11,923	60	21,900	54.4%
Gilpin Hall	2,888	18	6,570	44.0%
HarborChase of Wilmington	32,870	120	43,800	75.0%
Ingleside Assisted Living	19,200	60	21,900	87.7%
Ivy Gables	8,164	53	19,345	42.2%
Jeanne Jugan Residence	3,275	26	9,490	34.5%
Lodge Lane	16,183	60	21,900	73.9%
Millcroft Assisted Living	6,715	33	12,045	55.7%
OakBridge Terrace at Cokesbury Village	9,966	49	17,885	55.7%
OakBridge Terrace at Country House	10,241	40	14,600	70.1%
Paramount Senior Living	31,243	111	40,515	77.1%
Rockland Place	33,250	95	34,675	95.9%
Serenity Gardens	5,505	16	5,840	94.3%
Shipleigh Manor	4,809	17	6,205	77.5%
Somerford House	33,191	59	21,535	154.1%
Somerford Place	14,622	52	18,980	77.0%
Sunrise Assisted Living of Wilmington	24,264	90	32,850	73.9%
The Lorelton	26,346	99	36,135	72.9%
The Summit	30,890	120	43,800	70.5%
New Castle County Total	380,282	1,381	504,065	75.4%

**Table 7
(Continued)
Weighted Occupancy Rates by Facility and County, 2021**

AL/RR Facility	Billable Resident Days 2021	Number of Licensed Beds 2021	Licensed Bed Days 2021	Weighted Occupancy Rate 2021
Kent County				
Brookdale Dover	21,701	96	35,040	61.9%
Dover Place	19,122	85	31,025	61.6%
State Street Assisted Living	29,826	98	35,770	83.4%
Westminster Village	18,708	99	36,135	51.8%
Kent County Total	89,357	378	137,970	64.8%
Sussex County				
Brandywine Sr. Living at Fenwick Island	28,459	125	45,625	62.4%
Brandywine Sr. Living at Seaside Point	37,757	135	49,275	76.6%
Milford Place	26,060	85	31,025	84.0%
OakBridge Terrace at Manor House	16,504	75	27,375	60.3%
PeachTree Health Group	10,100	96	35,040	28.8%
The Moorings at Lewes	13,995	45	16,425	85.2%
Sussex County Total	132,875	561	204,765	64.9%
Total All Facilities	602,514	2,320	846,800	71.2%

Notes: Weighted occupancy rates for individual facilities are calculated as the ratio of Billable Resident Days and Licensed Bed Days. Licensed Bed Days are calculated as (Number of Licensed beds (as of December of the reporting year))*(Total days the facility was open during the reporting year). Weighted occupancy rates at county, facility type, and state levels are calculated as the ratio of Billable Resident Days (sum of each facility in the category) and Licensed Bed Days (sum of each facility in the category).

**Table 8
Percentage Resident Source of Payment by Facility and County, 2021**

AL/RR Facility	Medicaid	Self-Pay	Other	Total
New Castle County				
Arden Courts of Wilmington	0.0%	100.0%	0.0%	100.0%
Brookdale Hockessin	9.3%	90.7%	0.0%	100.0%
Forwood Manor	0.0%	100.0%	0.0%	100.0%
Foulk Manor North	0.0%	100.0%	0.0%	100.0%
Foulk Manor South	0.0%	100.0%	0.0%	100.0%
Gilpin Hall	0.0%	100.0%	0.0%	100.0%
HarborChase of Wilmington	0.0%	100.0%	0.0%	100.0%
Ingleside Assisted Living	57.0%	43.0%	0.0%	100.0%
Ivy Gables	0.0%	100.0%	0.0%	100.0%
Jeanne Jugan Residence	0.0%	100.0%	0.0%	100.0%
Lodge Lane	0.0%	100.0%	0.0%	100.0%
Millcroft Assisted Living	0.0%	100.0%	0.0%	100.0%
OakBridge Terrace at Cokesbury Village	0.0%	100.0%	0.0%	100.0%
OakBridge Terrace at Country House	0.0%	97.9%	2.1%	100.0%
Paramount Senior Living	11.9%	88.1%	0.0%	100.0%
Rockland Place	0.0%	100.0%	0.0%	100.0%
Serenity Gardens	0.0%	100.0%	0.0%	100.0%
Shipleigh Manor	0.0%	100.0%	0.0%	100.0%
Somerford House	2.1%	97.9%	0.0%	100.0%
Somerford Place	10.4%	89.6%	0.0%	100.0%
Sunrise Assisted Living of Wilmington	0.0%	100.0%	0.0%	100.0%
The Lorelton	4.6%	95.4%	0.0%	100.0%
The Summit	0.0%	100.0%	0.0%	100.0%
New Castle County Total	5.5%	94.4%	0.1%	100.0%

**Table 8
(Continued)
Percentage Resident Source of Payment, by Facility and County, 2021**

AL/RR Facility	Medicaid	Self-Pay	Other	Total
Kent County				
Brookdale Dover	35.1%	64.9%	0.0%	100.0%
Dover Place	14.9%	85.1%	0.0%	100.0%
State Street Assisted Living	15.3%	84.7%	0.0%	100.0%
Westminster Village	0.0%	86.9%	13.1%	100.0%
Kent County Total	17.0%	80.3%	2.7%	100.0%
Sussex County				
Brandywine Sr. Living at Fenwick Island	18.2%	81.8%	0.0%	100.0%
Brandywine Sr. Living at Seaside Point	15.5%	84.5%	0.0%	100.0%
Milford Place	13.4%	86.6%	0.0%	100.0%
OakBridge Terrace at Manor House	0.0%	100.0%	0.0%	100.0%
PeachTree Health Group	100.0%	0.0%	0.0%	100.0%
The Moorings at Lewes	0.0%	100.0%	0.0%	100.0%
Sussex County Total	18.6%	81.4%	0.0%	100.0%
Total All Facilities	10.3%	89.2%	0.5%	100.0%

Notes: The "other" payment category includes charitable pay, partial pay, private insurance, Veterans benefits, out-of-state Medicaid, and, in some cases, residents for whom medical status was pending at admissions.

**Table 9
Number of Move-Ins by Age, Gender, County and Facility, 2021**

AL/RR Facility	<65 Male	< 65 Female	65-74 Male	65-74 Female	75-84 Male	75-84 Female	85+ Male	85+ Female	Total Male	Total Female	Total M+F
New Castle County											
Arden Courts of Wilmington	0	0	8	4	14	2	10	12	32	18	50
Brookdale Hockessin	0	0	2	7	1	2	6	9	9	18	27
Forwood Manor	0	0	0	0	2	0	0	6	2	6	8
Foulk Manor North	0	0	0	0	5	9	2	10	7	19	26
Foulk Manor South	1	0	2	2	0	0	5	2	8	4	12
Gilpin Hall	0	0	0	0	0	0	0	1	0	1	1
HarborChase of Wilmington	2	0	0	5	9	10	17	18	28	33	61
Ingleside Assisted Living	0	2	4	4	2	2	0	4	6	12	18
Ivy Gables	0	0	0	1	0	4	3	19	3	24	27
Jeanne Jugan Residence	0	0	0	0	0	0	0	0	0	0	0
Lodge Lane	0	0	2	2	0	3	0	16	2	21	23
Millcroft Assisted Living	0	0	0	0	0	0	2	13	2	13	15
OakBridge Terrace at Cokesbury Village	0	0	0	1	0	2	0	10	0	13	13
OakBridge Terrace at Country House	0	0	0	0	0	4	4	16	4	20	24
Paramount Senior Living	0	0	0	0	5	0	0	9	5	9	14
Rockland Place	0	0	0	0	1	1	2	8	3	9	12
Serenity Gardens	0	0	1	2	1	1	1	0	3	3	6
Shipley Manor	0	0	0	0	1	0	1	5	2	5	7
Somerford House	0	1	0	8	4	6	0	17	4	32	36
Somerford Place	0	0	0	3	6	6	1	14	7	23	30
Sunrise Assisted Living of Wilmington	0	0	0	0	1	10	1	5	2	15	17
The Lorelton	0	0	1	0	0	3	10	23	11	26	37
The Summit	0	1	1	2	7	4	15	11	23	18	41
New Castle County Total	3	4	21	41	59	69	80	228	163	342	505

**Table 9
(Continued)**

Number of Move-Ins by Age, Gender, County and Facility, 2021

AL/RR Facility	<65 Male	< 65 Female	65-74 Male	65-74 Female	75-84 Male	75-84 Female	85+ Male	85+ Female	Total Male	Total Female	Total M+F
Kent County											
Brookdale Dover	0	3	2	3	3	4	2	12	7	22	29
Dover Place	2	0	1	3	6	10	2	8	11	21	32
State Street Assisted Living	0	0	6	3	3	6	0	12	9	21	30
Westminster Village	0	0	2	2	0	4	3	6	5	12	17
Kent County Total	2	3	11	11	12	24	7	38	32	76	108
Sussex County											
Brandywine Sr. Living at Fenwick Island	0	0	4	0	8	7	5	13	17	20	37
Brandywine Sr. Living at Seaside Point	0	0	0	0	13	28	6	16	19	44	63
Milford Place	2	0	1	0	10	4	4	4	17	8	25
OakBridge Terrace at Manor House	0	0	0	0	1	3	6	15	7	18	25
PeachTree Health Group	19	3	5	0	0	0	0	0	24	3	27
The Moorings at Lewes	0	0	0	0	1	3	3	12	4	15	19
Sussex County Total	21	3	10	0	33	45	24	60	88	108	196
Total All Facilities	26	10	42	52	104	138	111	326	283	526	809

Table 10
Percentage of Move-Ins by Age, County and Facility, 2021

AL/RR Facility	Under 65	65-74	75-84	85+	Total
New Castle County					
Arden Courts of Wilmington	0.0%	24.0%	32.0%	44.0%	100.0%
Brookdale Hockessin	0.0%	33.3%	11.1%	55.6%	100.0%
Forwood Manor	0.0%	0.0%	25.0%	75.0%	100.0%
Foulk Manor North	0.0%	0.0%	53.8%	46.2%	100.0%
Foulk Manor South	8.3%	33.3%	0.0%	58.3%	100.0%
Gilpin Hall	0.0%	0.0%	0.0%	100.0%	100.0%
HarborChase of Wilmington	3.3%	8.2%	31.1%	57.4%	100.0%
Ingleside Assisted Living	11.1%	44.4%	22.2%	22.2%	100.0%
Ivy Gables	0.0%	3.7%	14.8%	81.5%	100.0%
Jeanne Jugan Residence	N/A	N/A	N/A	N/A	N/A
Lodge Lane	0.0%	17.4%	13.0%	69.6%	100.0%
Millcroft Assisted Living	0.0%	0.0%	0.0%	100.0%	100.0%
OakBridge Terrace at Cokesbury Village	0.0%	7.7%	15.4%	76.9%	100.0%
OakBridge Terrace at Country House	0.0%	0.0%	16.7%	83.3%	100.0%
Paramount Senior Living	0.0%	0.0%	35.7%	64.3%	100.0%
Rockland Place	0.0%	0.0%	16.7%	83.3%	100.0%
Serenity Gardens	0.0%	50.0%	33.3%	16.7%	100.0%
Shiplely Manor	0.0%	0.0%	14.3%	85.7%	100.0%
Somerford House	2.8%	22.2%	27.8%	47.2%	100.0%
Somerford Place	0.0%	10.0%	40.0%	50.0%	100.0%
Sunrise Assisted Living of Wilmington	0.0%	0.0%	64.7%	35.3%	100.0%
The Lorelton	0.0%	2.7%	8.1%	89.2%	100.0%
The Summit	2.4%	7.3%	26.8%	63.4%	100.0%
New Castle County Total	1.4%	12.3%	25.3%	61.0%	100.0%

Table 10
(Continued)
Percentage of Move-Ins by Age, County and Facility, 2021

AL/RR Facility	Under 65	65-74	75-84	85+	Total
Kent County					
Brookdale Dover	10.3%	17.2%	24.1%	48.3%	100.0%
Dover Place	6.3%	12.5%	50.0%	31.3%	100.0%
State Street Assisted Living	0.0%	30.0%	30.0%	40.0%	100.0%
Westminster Village	0.0%	23.5%	23.5%	52.9%	100.0%
Kent County Total	4.6%	20.4%	33.3%	41.7%	100.0%
Sussex County					
Brandywine Sr. Living at Fenwick Island	0.0%	10.8%	40.5%	48.6%	100.0%
Brandywine Sr. Living at Seaside Point	0.0%	0.0%	65.1%	34.9%	100.0%
Milford Place	8.0%	4.0%	56.0%	32.0%	100.0%
OakBridge Terrace at Manor House	0.0%	0.0%	16.0%	84.0%	100.0%
PeachTree Health Group	81.5%	18.5%	0.0%	0.0%	100.0%
The Moorings at Lewes	0.0%	0.0%	21.1%	78.9%	100.0%
Sussex County Total	12.2%	5.1%	39.8%	42.9%	100.0%
Total All Facilities	4.4%	11.6%	29.9%	54.0%	100.0%

Table 11
Percentage of Move-Ins by Gender, County and Facility, 2021

AL/RR Facility	Male	Female	AL/RR Facility	Male	Female
New Castle County			Kent County		
Arden Courts of Wilmington	64.0%	36.0%	Brookdale Dover	24.1%	75.9%
Brookdale Hockessin	33.3%	66.7%	Dover Place	34.4%	65.6%
Forwood Manor	25.0%	75.0%	State Street Assisted Living	30.0%	70.0%
Foulk Manor North	26.9%	73.1%	Westminster Village	29.4%	70.6%
Foulk Manor South	66.7%	33.3%	Kent County Total	29.6%	70.4%
Gilpin Hall	0.0%	100.0%			
HarborChase of Wilmington	45.9%	54.1%	Sussex County		
Ingleside Assisted Living	33.3%	66.7%	Brandywine Sr. Living at Fenwick Island	45.9%	54.1%
Ivy Gables	11.1%	88.9%	Brandywine Sr. Living at Seaside Point	30.2%	69.8%
Jeanne Jugan Residence	N/A	N/A	Milford Place	68.0%	32.0%
Lodge Lane	8.7%	91.3%	OakBridge Terrace at Manor House	28.0%	72.0%
Millcroft Assisted Living	13.3%	86.7%	PeachTree Health Group	88.9%	11.1%
OakBridge Terrace at Cokesbury Village	0.0%	100.0%	The Moorings at Lewes	21.1%	78.9%
OakBridge Terrace at Country House	16.7%	83.3%	Sussex County Total	44.9%	55.1%
Paramount Senior Living	35.7%	64.3%			
Rockland Place	25.0%	75.0%	Total All Facilities	35.0%	65.0%
Serenity Gardens	50.0%	50.0%			
ShIPLEY Manor	28.6%	71.4%			
Somerford House	11.1%	88.9%			
Somerford Place	23.3%	76.7%			
Sunrise Assisted Living of Wilmington	11.8%	88.2%			
The Lorelton	29.7%	70.3%			
The Summit	56.1%	43.9%			
New Castle County Total	32.3%	67.7%			

Table 12
Number of Move-Ins by Source of Referral, 2021

AL/RR Facility	Own or Relatives' Home	Acute Care Hospital	Nursing Home	Other AL/RR	Other	Total
New Castle County						
Arden Courts of Wilmington	18	10	10	6	6	50
Brookdale Hockessin	7	0	19	1	0	27
Forwood Manor	4	0	4	0	0	8
Foulk Manor North	13	9	4	0	0	26
Foulk Manor South	4	0	4	4	0	12
Gilpin Hall	0	0	1	0	0	1
HarborChase of Wilmington	38	13	1	9	0	61
Ingleside Assisted Living	8	4	0	0	6	18
Ivy Gables	17	3	0	7	0	27
Jeanne Jugan Residence	0	0	0	0	0	0
Lodge Lane	9	2	12	0	0	23
Millcroft Assisted Living	4	0	7	0	4	15
OakBridge Terrace at Cokesbury Village	11	0	2	0	0	13
OakBridge Terrace at Country House	2	8	11	0	3	24
Paramount Senior Living	14	0	0	0	0	14
Rockland Place	7	0	5	0	0	12
Serenity Gardens	1	3	0	1	1	6
ShIPLEY Manor	4	0	0	2	1	7
Somerford House	24	0	10	2	0	36
Somerford Place	12	0	16	2	0	30
Sunrise Assisted Living of Wilmington	16	1	0	0	0	17
The Lorelton	30	2	3	0	2	37
The Summit	35	2	3	1	0	41
New Castle County Total	278	57	112	35	23	505

Table 12
(Continued)
Number of Move-Ins by Source of Referral, 2021

AL/RR Facility	Own or Relatives' Home	Acute Care Hospital	Nursing Home	Other AL/RR	Other	Total
Kent County						
Brookdale Dover	4	14	10	1	0	29
Dover Place	32	0	0	0	0	32
State Street Assisted Living	27	3	0	0	0	30
Westminster Village	7	1	0	1	8	17
Kent County Total	70	18	10	2	8	108
Sussex County						
Brandywine Sr. Living at Fenwick Island	21	0	9	7	0	37
Brandywine Sr. Living at Seaside Point	54	9	0	0	0	63
Milford Place	8	6	3	8	0	25
OakBridge Terrace at Manor House	23	0	2	0	0	25
PeachTree Health Group	13	1	13	0	0	27
The Moorings at Lewes	14	0	5	0	0	19
Sussex County Total	133	16	32	15	0	196
Total All Facilities						
	481	91	154	52	31	809

Table 13
Percentage of Move-Ins by Source of Referral, County and Facility, 2021

AL/RR Facility	Own or Relatives' Home	Acute Care Hospital	Nursing Home	Other AL/RR	Other	Total
New Castle County						
Arden Courts of Wilmington	36.0%	20.0%	20.0%	12.0%	12.0%	100.0%
Brookdale Hockessin	25.9%	0.0%	70.4%	3.7%	0.0%	100.0%
Forwood Manor	50.0%	0.0%	50.0%	0.0%	0.0%	100.0%
Foulk Manor North	50.0%	34.6%	15.4%	0.0%	0.0%	100.0%
Foulk Manor South	33.3%	0.0%	33.3%	33.3%	0.0%	100.0%
Gilpin Hall	0.0%	0.0%	100.0%	0.0%	0.0%	100.0%
HarborChase of Wilmington	62.3%	21.3%	1.6%	14.8%	0.0%	100.0%
Ingleside Assisted Living	44.4%	22.2%	0.0%	0.0%	33.3%	100.0%
Ivy Gables	63.0%	11.1%	0.0%	25.9%	0.0%	100.0%
Jeanne Jugan Residence	N/A	N/A	N/A	N/A	N/A	N/A
Lodge Lane	39.1%	8.7%	52.2%	0.0%	0.0%	100.0%
Millcroft Assisted Living	26.7%	0.0%	46.7%	0.0%	26.7%	100.0%
OakBridge Terrace at Cokesbury Village	84.6%	0.0%	15.4%	0.0%	0.0%	100.0%
OakBridge Terrace at Country House	8.3%	33.3%	45.8%	0.0%	12.5%	100.0%
Paramount Senior Living	100.0%	0.0%	0.0%	0.0%	0.0%	100.0%
Rockland Place	58.3%	0.0%	41.7%	0.0%	0.0%	100.0%
Serenity Gardens	16.7%	50.0%	0.0%	16.7%	16.7%	100.0%
Shipleigh Manor	57.1%	0.0%	0.0%	28.6%	14.3%	100.0%
Somerford House	66.7%	0.0%	27.8%	5.6%	0.0%	100.0%
Somerford Place	40.0%	0.0%	53.3%	6.7%	0.0%	100.0%
Sunrise Assisted Living of Wilmington	94.1%	5.9%	0.0%	0.0%	0.0%	100.0%
The Lorelton	81.1%	5.4%	8.1%	0.0%	5.4%	100.0%
The Summit	85.4%	4.9%	7.3%	2.4%	0.0%	100.0%
New Castle County Total	55.0%	11.3%	22.2%	6.9%	4.6%	100.0%

**Table 13
(Continued)**

Percentage of Move-Ins by Source of Referral, County and Facility, 2021

AL/RR Facility	Own or Relatives' Home	Acute Care Hospital	Nursing Home	Other AL/RR	Other	Total
Kent County						
Brookdale Dover	13.8%	48.3%	34.5%	3.4%	0.0%	100.0%
Dover Place	100.0%	0.0%	0.0%	0.0%	0.0%	100.0%
State Street Assisted Living	90.0%	10.0%	0.0%	0.0%	0.0%	100.0%
Westminster Village	41.2%	5.9%	0.0%	5.9%	47.1%	100.0%
Kent County Total	64.8%	16.7%	9.3%	1.9%	7.4%	100.0%
Sussex County						
Brandywine Sr. Living at Fenwick Island	56.8%	0.0%	24.3%	18.9%	0.0%	100.0%
Brandywine Sr. Living at Seaside Point	85.7%	14.3%	0.0%	0.0%	0.0%	100.0%
Milford Place	32.0%	24.0%	12.0%	32.0%	0.0%	100.0%
OakBridge Terrace at Manor House	92.0%	0.0%	8.0%	0.0%	0.0%	100.0%
PeachTree Health Group	48.1%	3.7%	48.1%	0.0%	0.0%	100.0%
The Moorings at Lewes	73.7%	0.0%	26.3%	0.0%	0.0%	100.0%
Sussex County Total	67.9%	8.2%	16.3%	7.7%	0.0%	100.0%
Total All Facilities	59.5%	11.2%	19.0%	6.4%	3.8%	100.0%

Table 14
Number of Move-Ins by County and State of Residence, 2021

AL/RR Facility	NCC	Kent	Sussex	MD	NJ	PA	Other	Total
New Castle County								
Arden Courts of Wilmington	36	4	0	2	0	8	0	50
Brookdale Hockessin	23	0	1	0	0	1	2	27
Forwood Manor	8	0	0	0	0	0	0	8
Foulk Manor North	23	0	0	1	0	2	0	26
Foulk Manor South	12	0	0	0	0	0	0	12
Gilpin Hall	1	0	0	0	0	0	0	1
HarborChase of Wilmington	45	0	0	0	0	3	13	61
Ingleside Assisted Living	15	0	0	2	0	1	0	18
Ivy Gables	25	1	0	0	0	1	0	27
Jeanne Jugan Residence	0	0	0	0	0	0	0	0
Lodge Lane	22	0	0	0	0	0	1	23
Millcroft Assisted Living	14	1	0	0	0	0	0	15
OakBridge Terrace at Cokesbury Village	12	0	1	0	0	0	0	13
OakBridge Terrace at Country House	23	0	0	0	0	0	1	24
Paramount Senior Living	14	0	0	0	0	0	0	14
Rockland Place	12	0	0	0	0	0	0	12
Serenity Gardens	5	1	0	0	0	0	0	6
Shipley Manor	5	0	0	0	0	2	0	7
Somerford House	36	0	0	0	0	0	0	36
Somerford Place	30	0	0	0	0	0	0	30
Sunrise Assisted Living of Wilmington	17	0	0	0	0	0	0	17
The Lorelton	30	0	0	0	0	2	5	37
The Summit	39	0	0	0	1	0	1	41
New Castle County Total	447	7	2	5	1	20	23	505

Table 14
(Continued)
Number of Move-Ins by County and State of Residence, 2021

AL/RR Facility	NCC	Kent	Sussex	MD	NJ	PA	Other	Total
Kent County								
Brookdale Dover	0	28	0	1	0	0	0	29
Dover Place	5	18	6	2	0	1	0	32
State Street Assisted Living	0	21	0	0	6	3	0	30
Westminster Village	2	15	0	0	0	0	0	17
Kent County Total	7	82	6	3	6	4	0	108
Sussex County								
Brandywine Sr. Living at Fenwick Island	2	0	11	9	6	3	6	37
Brandywine Sr. Living at Seaside Point	0	0	57	0	1	2	3	63
Milford Place	0	4	18	0	1	2	0	25
OakBridge Terrace at Manor House	0	0	24	1	0	0	0	25
PeachTree Health Group	1	4	17	3	0	2	0	27
The Moorings at Lewes	0	0	14	0	0	3	2	19
Sussex County Total	3	8	141	13	8	12	11	196
Total All Facilities	457	97	149	21	15	36	34	809

Table 15
Percentage of Move-Ins by County and State of Residence, 2021

AL/RR Facility	NCC	Kent	Sussex	MD	NJ	PA	Other	Total
New Castle County								
Arden Courts of Wilmington	72.0%	8.0%	0.0%	4.0%	0.0%	16.0%	0.0%	100.0%
Brookdale Hockessin	85.2%	0.0%	3.7%	0.0%	0.0%	3.7%	7.4%	100.0%
Forwood Manor	100.0%	0.0%	0.0%	0.0%	0.0%	0.0%	0.0%	100.0%
Foulk Manor North	88.5%	0.0%	0.0%	3.8%	0.0%	7.7%	0.0%	100.0%
Foulk Manor South	100.0%	0.0%	0.0%	0.0%	0.0%	0.0%	0.0%	100.0%
Gilpin Hall	100.0%	0.0%	0.0%	0.0%	0.0%	0.0%	0.0%	100.0%
HarborChase of Wilmington	73.8%	0.0%	0.0%	0.0%	0.0%	4.9%	21.3%	100.0%
Ingleside Assisted Living	83.3%	0.0%	0.0%	11.1%	0.0%	5.6%	0.0%	100.0%
Ivy Gables	92.6%	3.7%	0.0%	0.0%	0.0%	3.7%	0.0%	100.0%
Jeanne Jugan Residence	N/A	N/A	N/A	N/A	N/A	N/A	N/A	N/A
Lodge Lane	95.7%	0.0%	0.0%	0.0%	0.0%	0.0%	4.3%	100.0%
Millcroft Assisted Living	93.3%	6.7%	0.0%	0.0%	0.0%	0.0%	0.0%	100.0%
OakBridge Terrace at Cokesbury Village	92.3%	0.0%	7.7%	0.0%	0.0%	0.0%	0.0%	100.0%
OakBridge Terrace at Country House	95.8%	0.0%	0.0%	0.0%	0.0%	0.0%	4.2%	100.0%
Paramount Senior Living	100.0%	0.0%	0.0%	0.0%	0.0%	0.0%	0.0%	100.0%
Rockland Place	100.0%	0.0%	0.0%	0.0%	0.0%	0.0%	0.0%	100.0%
Serenity Gardens	83.3%	16.7%	0.0%	0.0%	0.0%	0.0%	0.0%	100.0%
Shipleigh Manor	71.4%	0.0%	0.0%	0.0%	0.0%	28.6%	0.0%	100.0%
Somerford House	100.0%	0.0%	0.0%	0.0%	0.0%	0.0%	0.0%	100.0%
Somerford Place	100.0%	0.0%	0.0%	0.0%	0.0%	0.0%	0.0%	100.0%
Sunrise Assisted Living of Wilmington	100.0%	0.0%	0.0%	0.0%	0.0%	0.0%	0.0%	100.0%
The Lorelton	81.1%	0.0%	0.0%	0.0%	0.0%	5.4%	13.5%	100.0%
The Summit	95.1%	0.0%	0.0%	0.0%	2.4%	0.0%	2.4%	100.0%
New Castle County Total	88.5%	1.4%	0.4%	1.0%	0.2%	4.0%	4.6%	100.0%

**Table 15
(Continued)
Percentage of Move-Ins by County and State of Residence, 2021**

AL/RR Facility	NCC	Kent	Sussex	MD	NJ	PA	Other	Total
Kent County								
Brookdale Dover	0.0%	96.6%	0.0%	3.4%	0.0%	0.0%	0.0%	100.0%
Dover Place	15.6%	56.3%	18.8%	6.3%	0.0%	3.1%	0.0%	100.0%
State Street Assisted Living	0.0%	70.0%	0.0%	0.0%	20.0%	10.0%	0.0%	100.0%
Westminster Village	11.8%	88.2%	0.0%	0.0%	0.0%	0.0%	0.0%	100.0%
Kent County Total	6.5%	75.9%	5.6%	2.8%	5.6%	3.7%	0.0%	100.0%
Sussex County								
Brandywine Sr. Living at Fenwick Island	5.4%	0.0%	29.7%	24.3%	16.2%	8.1%	16.2%	100.0%
Brandywine Sr. Living at Seaside Point	0.0%	0.0%	90.5%	0.0%	1.6%	3.2%	4.8%	100.0%
Milford Place	0.0%	16.0%	72.0%	0.0%	4.0%	8.0%	0.0%	100.0%
OakBridge Terrace at Manor House	0.0%	0.0%	96.0%	4.0%	0.0%	0.0%	0.0%	100.0%
PeachTree Health Group	3.7%	14.8%	63.0%	11.1%	0.0%	7.4%	0.0%	100.0%
The Moorings at Lewes	0.0%	0.0%	73.7%	0.0%	0.0%	15.8%	10.5%	100.0%
Sussex County Total	1.5%	4.1%	71.9%	6.6%	4.1%	6.1%	5.6%	100.0%
Total All Facilities	56.5%	12.0%	18.4%	2.6%	1.9%	4.4%	4.2%	100.0%

**Table 16
Number of Move-Outs by Age, Gender, County and Facility, 2021**

AL/RR Facility	<65 Male	< 65 Female	65-74 Male	65-74 Female	75-84 Male	75-84 Female	85+ Male	85+ Female	Total Male	Total Female	Total M+F
New Castle County											
Arden Courts of Wilmington	0	2	8	0	10	4	12	14	30	3	50
Brookdale Hockessin	1	0	1	0	5	4	8	11	15	1	30
Forwood Manor	0	0	0	0	0	2	2	10	2	1	14
Foulk Manor North	0	0	0	0	3	4	16	6	19	2	29
Foulk Manor South	0	0	2	0	0	3	3	13	5	4	21
Gilpin Hall	0	0	0	0	0	1	2	1	2	0	4
HarborChase of Wilmington	2	0	0	1	1	0	11	18	14	2	33
Ingleside Assisted Living	2	0	0	2	1	1	8	2	11	1	16
Ivy Gables	0	0	0	1	0	0	0	6	0	2	7
Jeanne Jugan Residence	0	0	0	0	1	0	0	2	1	0	3
Lodge Lane	0	0	1	0	3	0	1	12	5	2	17
Millcroft Assisted Living	0	0	0	0	0	0	3	7	3	0	10
OakBridge Terrace at Cokesbury Village	0	0	0	0	0	0	2	8	2	1	10
OakBridge Terrace at Country House	0	0	0	0	0	2	7	12	7	2	21
Paramount Senior Living	0	0	0	0	0	0	0	0	0	0	0
Rockland Place	0	1	0	0	0	4	3	12	3	0	20
Serenity Gardens	0	0	1	1	2	3	0	2	3	2	9
Shipley Manor	0	0	0	0	3	0	3	4	6	0	10
Somerford House	0	0	3	0	2	5	1	11	6	1	22
Somerford Place	0	0	2	3	2	7	4	4	8	2	22
Sunrise Assisted Living of Wilmington	0	0	0	1	12	8	2	7	14	1	30
The Lorelton	0	0	0	0	1	0	4	14	5	2	19
The Summit	0	0	0	0	2	5	16	15	18	3	38
New Castle County Total	5	3	18	9	48	53	108	191	179	256	435

**Table 16
(Continued)**

Number of Move-Outs by Age, Gender, County and Facility, 2021

AL/RR Facility	<65 Male	< 65 Female	65-74 Male	65-74 Female	75-84 Male	75-84 Female	85+ Male	85+ Female	Total Male	Total Female	Total M+F
Kent County											
Brookdale Dover	10	0	2	0	0	0	11	20	23	20	43
Dover Place	2	0	0	0	5	8	3	15	10	23	33
State Street Assisted Living	3	0	0	3	3	6	18	15	24	24	48
Westminster Village	0	0	0	2	3	0	3	3	6	5	11
Kent County Total	15	0	2	5	11	14	35	53	63	72	135
Sussex County											
Brandywine Sr. Living at Fenwick Island	0	0	2	0	0	4	11	13	13	17	30
Brandywine Sr. Living at Seaside Point	0	0	0	0	5	6	12	21	17	27	44
Milford Place	0	0	2	2	8	9	3	18	13	29	42
OakBridge Terrace at Manor House	0	0	0	0	1	2	6	10	7	12	19
PeachTree Health Group	4	1	3	0	0	0	0	0	7	1	8
The Moorings at Lewes	0	0	0	0	3	8	2	10	5	18	23
Sussex County Total	4	1	7	2	17	29	34	72	62	104	166
Total All Facilities	24	4	27	16	76	96	177	316	304	432	736

Table 17
Percentage of Move-Outs by Age, Facility Type, County and Facility, 2021

AL/RR Facility	Under 65	65-74	75-84	85+	Total
New Castle County					
Arden Courts of Wilmington	4.0%	16.0%	28.0%	52.0%	100.0%
Brookdale Hockessin	3.3%	3.3%	30.0%	63.3%	100.0%
Forwood Manor	0.0%	0.0%	14.3%	85.7%	100.0%
Foulk Manor North	0.0%	0.0%	24.1%	75.9%	100.0%
Foulk Manor South	0.0%	9.5%	14.3%	76.2%	100.0%
Gilpin Hall	0.0%	0.0%	25.0%	75.0%	100.0%
HarborChase of Wilmington	6.1%	3.0%	3.0%	87.9%	100.0%
Ingleside Assisted Living	12.5%	12.5%	12.5%	62.5%	100.0%
Ivy Gables	0.0%	14.3%	0.0%	85.7%	100.0%
Jeanne Jugan Residence	0.0%	0.0%	33.3%	66.7%	100.0%
Lodge Lane	0.0%	5.9%	17.6%	76.5%	100.0%
Millcroft Assisted Living	0.0%	0.0%	0.0%	100.0%	100.0%
OakBridge Terrace at Cokesbury Village	0.0%	0.0%	0.0%	100.0%	100.0%
OakBridge Terrace at Country House	0.0%	0.0%	9.5%	90.5%	100.0%
Paramount Senior Living	N/A	N/A	N/A	N/A	N/A
Rockland Place	5.0%	0.0%	20.0%	75.0%	100.0%
Serenity Gardens	0.0%	22.2%	55.6%	22.2%	100.0%
Shipley Manor	0.0%	0.0%	30.0%	70.0%	100.0%
Somerford House	0.0%	13.6%	31.8%	54.5%	100.0%
Somerford Place	0.0%	22.7%	40.9%	36.4%	100.0%
Sunrise Assisted Living of Wilmington	0.0%	3.3%	66.7%	30.0%	100.0%
The Lorelton	0.0%	0.0%	5.3%	94.7%	100.0%
The Summit	0.0%	0.0%	18.4%	81.6%	100.0%
New Castle County Total	1.8%	6.2%	23.2%	68.7%	100.0%

**Table 17
(Continued)**

Percentage of Move-Outs by Age, Facility Type, County and Facility, 2021

AL/RR Facility	Under 65	65-74	75-84	85+	Total
Kent County					
Brookdale Dover	23.3%	4.7%	0.0%	72.1%	100.0%
Dover Place	6.1%	0.0%	39.4%	54.5%	100.0%
State Street Assisted Living	6.3%	6.3%	18.8%	68.8%	100.0%
Westminster Village	0.0%	18.2%	27.3%	54.5%	100.0%
Kent County Total	11.1%	5.2%	18.5%	65.2%	100.0%
Sussex County					
Brandywine Sr. Living at Fenwick Island	0.0%	6.7%	13.3%	80.0%	100.0%
Brandywine Sr. Living at Seaside Point	0.0%	0.0%	25.0%	75.0%	100.0%
Milford Place	0.0%	9.5%	40.5%	50.0%	100.0%
OakBridge Terrace at Manor House	0.0%	0.0%	15.8%	84.2%	100.0%
PeachTree Health Group	62.5%	37.5%	0.0%	0.0%	100.0%
The Moorings at Lewes	0.0%	0.0%	47.8%	52.2%	100.0%
Sussex County Total	3.0%	5.4%	27.7%	63.9%	100.0%
Total All Facilities	3.8%	5.8%	23.4%	67.0%	100.0%

Table 18
Percentage of Move-Outs by Gender, Facility Type, County and Facility Name, 2021

AL/RR Facility	Male	Female	AL/RR Facility	Male	Female
New Castle County			Kent County		
Arden Courts of Wilmington	60.0%	40.0%	Brookdale Dover	53.5%	46.5%
Brookdale Hockessin	50.0%	50.0%	Dover Place	30.3%	69.7%
Forwood Manor	14.3%	85.7%	State Street Assisted Living	50.0%	50.0%
Foulk Manor North	65.5%	34.5%	Westminster Village	54.5%	45.5%
Foulk Manor South	23.8%	76.2%	Kent County Total	46.7%	53.3%
Gilpin Hall	50.0%	50.0%			
HarborChase of Wilmington	42.4%	57.6%	Sussex County		
Ingleside Assisted Living	68.8%	31.3%	Brandywine Sr. Living at Fenwick Island	43.3%	56.7%
Ivy Gables	0.0%	100.0%	Brandywine Sr. Living at Seaside Point	38.6%	61.4%
Jeanne Jugan Residence	33.3%	66.7%	Milford Place	31.0%	69.0%
Lodge Lane	29.4%	70.6%	OakBridge Terrace at Manor House	36.8%	63.2%
Millcroft Assisted Living	30.0%	70.0%	PeachTree Health Group	87.5%	12.5%
OakBridge Terrace at Cokesbury Village	20.0%	80.0%	The Moorings at Lewes	21.7%	78.3%
OakBridge Terrace at Country House	33.3%	66.7%	Sussex County Total	37.3%	62.7%
Paramount Senior Living	#DIV/0!	#DIV/0!			
Rockland Place	15.0%	85.0%	Total All Facilities	41.3%	58.7%
Serenity Gardens	33.3%	66.7%			
Shipleigh Manor	60.0%	40.0%			
Somerford House	27.3%	72.7%			
Somerford Place	36.4%	63.6%			
Sunrise Assisted Living of Wilmington	46.7%	53.3%			
The Lorelton	26.3%	73.7%			
The Summit	47.4%	52.6%			
New Castle County Total	41.1%	58.9%			

Table 19
Number of Move-Outs by Disposition, Facility Type, County and Facility Name, 2021

AL/RR Facility	Own or Relatives' Home	Acute Care Hospital	Nursing Home	Other AL/RR	Death	Other	Total
New Castle County							
Arden Courts of Wilmington	12	2	8	8	20	0	50
Brookdale Hockessin	2	2	4	3	19	0	30
Forwood Manor	2	0	8	0	4	0	14
Foulk Manor North	2	0	15	2	10	0	29
Foulk Manor South	0	0	11	7	1	2	21
Gilpin Hall	0	2	1	0	1	0	4
HarborChase of Wilmington	4	0	11	2	16	0	33
Ingleside Assisted Living	3	0	8	0	4	1	16
Ivy Gables	1	1	0	1	4	0	7
Jeanne Jugan Residence	0	0	3	0	0	0	3
Lodge Lane	3	0	2	3	9	0	17
Millcroft Assisted Living	0	2	7	0	1	0	10
OakBridge Terrace at Cokesbury Village	0	0	9	0	1	0	10
OakBridge Terrace at Country House	2	14	5	0	0	0	21
Paramount Senior Living	0	0	0	0	0	0	0
Rockland Place	1	2	1	1	13	2	20
Serenity Gardens	0	0	3	2	3	1	9
Shipleigh Manor	0	0	5	0	4	1	10
Somerford House	0	0	21	0	1	0	22
Somerford Place	0	0	14	0	8	0	22
Sunrise Assisted Living of Wilmington	8	0	0	1	21	0	30
The Lorelton	4	0	4	0	10	1	19
The Summit	5	1	11	2	19	0	38
New Castle County Total	49	26	151	32	169	8	435

**Table 19
(Continued)**

Number of Move-Outs by Disposition, Facility Type, County and Facility Name, 2021

AL/RR Facility	Own or Relatives' Home	Acute Care Hospital	Nursing Home	Other AL/RR	Death	Other	Total
Kent County							
Brookdale Dover	1	1	10	0	31	0	43
Dover Place	6	0	1	2	19	5	33
State Street Assisted Living	6	0	20	0	21	0	47
Westminster Village	0	0	8	0	1	2	11
Kent County Total	13	1	39	2	72	7	134
Sussex County							
Brandywine Sr. Living at Fenwick Island	5	0	9	1	15	0	30
Brandywine Sr. Living at Seaside Point	5	2	7	1	29	0	44
Milford Place	12	1	4	4	21	0	42
OakBridge Terrace at Manor House	2	3	11	0	3	0	19
PeachTree Health Group	0	8	0	0	0	0	8
The Moorings at Lewes	2	0	10	4	6	1	23
Sussex County Total	26	14	41	10	74	1	166
Total All Facilities	88	41	231	44	315	16	735

Table 20
Percentage of Move-Outs by Disposition, Facility Type, County and Facility Name, 2021

AL/RR Facility	Own or Relatives' Home	Acute Care Hospital	Nursing Home	Other AL/RR	Death	Other	Total
New Castle County							
Arden Courts of Wilmington	24.0%	4.0%	16.0%	16.0%	40.0%	0.0%	100.0%
Brookdale Hockessin	6.7%	6.7%	13.3%	10.0%	63.3%	0.0%	100.0%
Forwood Manor	14.3%	0.0%	57.1%	0.0%	28.6%	0.0%	100.0%
Foulk Manor North	6.9%	0.0%	51.7%	6.9%	34.5%	0.0%	100.0%
Foulk Manor South	0.0%	0.0%	52.4%	33.3%	4.8%	9.5%	100.0%
Gilpin Hall	0.0%	50.0%	25.0%	0.0%	25.0%	0.0%	100.0%
HarborChase of Wilmington	12.1%	0.0%	33.3%	6.1%	48.5%	0.0%	100.0%
Ingleside Assisted Living	18.8%	0.0%	50.0%	0.0%	25.0%	6.3%	100.0%
Ivy Gables	14.3%	14.3%	0.0%	14.3%	57.1%	0.0%	100.0%
Jeanne Jugan Residence	0.0%	0.0%	100.0%	0.0%	0.0%	0.0%	100.0%
Lodge Lane	17.6%	0.0%	11.8%	17.6%	52.9%	0.0%	100.0%
Millcroft Assisted Living	0.0%	20.0%	70.0%	0.0%	10.0%	0.0%	100.0%
OakBridge Terrace at Cokesbury Village	0.0%	0.0%	90.0%	0.0%	10.0%	0.0%	100.0%
OakBridge Terrace at Country House	9.5%	66.7%	23.8%	0.0%	0.0%	0.0%	100.0%
Paramount Senior Living	N/A	N/A	N/A	N/A	N/A	N/A	N/A
Rockland Place	5.0%	10.0%	5.0%	5.0%	65.0%	10.0%	100.0%
Serenity Gardens	0.0%	0.0%	33.3%	22.2%	33.3%	11.1%	100.0%
ShIPLEY Manor	0.0%	0.0%	50.0%	0.0%	40.0%	10.0%	100.0%
Somerford House	0.0%	0.0%	95.5%	0.0%	4.5%	0.0%	100.0%
Somerford Place	0.0%	0.0%	63.6%	0.0%	36.4%	0.0%	100.0%
Sunrise Assisted Living of Wilmington	26.7%	0.0%	0.0%	3.3%	70.0%	0.0%	100.0%
The Lorelton	21.1%	0.0%	21.1%	0.0%	52.6%	5.3%	100.0%
The Summit	13.2%	2.6%	28.9%	5.3%	50.0%	0.0%	100.0%
New Castle County Total	11.3%	6.0%	34.7%	7.4%	38.9%	1.8%	100.0%

**Table 20
(Continued)**

Percentage of Move-Outs by Disposition, Facility Type, County and Facility Name, 2021

AL/RR Facility	Own or Relatives' Home	Acute Care Hospital	Nursing Home	Other AL/RR	Death	Other	Total
Kent County							
Brookdale Dover	2.3%	2.3%	23.3%	0.0%	72.1%	0.0%	100.0%
Dover Place	18.2%	0.0%	3.0%	6.1%	57.6%	15.2%	100.0%
State Street Assisted Living	12.8%	0.0%	42.6%	0.0%	44.7%	0.0%	100.0%
Westminster Village	0.0%	0.0%	72.7%	0.0%	9.1%	18.2%	100.0%
Kent County Total	9.7%	0.7%	29.1%	1.5%	53.7%	5.2%	100.0%
Sussex County							
Brandywine Sr. Living at Fenwick Island	16.7%	0.0%	30.0%	3.3%	50.0%	0.0%	100.0%
Brandywine Sr. Living at Seaside Point	11.4%	4.5%	15.9%	2.3%	65.9%	0.0%	100.0%
Milford Place	28.6%	2.4%	9.5%	9.5%	50.0%	0.0%	100.0%
OakBridge Terrace at Manor House	10.5%	15.8%	57.9%	0.0%	15.8%	0.0%	100.0%
PeachTree Health Group	0.0%	100.0%	0.0%	0.0%	0.0%	0.0%	100.0%
The Moorings at Lewes	8.7%	0.0%	43.5%	17.4%	26.1%	4.3%	100.0%
Sussex County Total	15.7%	8.4%	24.7%	6.0%	44.6%	0.6%	100.0%
Total All Facilities	12.0%	5.6%	31.4%	6.0%	42.9%	2.2%	100.0%

APPENDIX A: 2021 AL/RR TRENDS AMONG THE UNDER 65 POPULATION

Beginning with the 2019 DALUSR, the DHCC began collecting cohort-specific admissions, discharge, and billable patient days data on the Under 65 AL/RR resident population. Prior to the 2019 annual report, data pertaining to this cohort were consolidated in an Under 65 category. Currently, Delaware AL/RR facilities report monthly utilization data for populations age 18-34, 35-44, 45-54, and 55-64, and the DHCC uses these data to track AL/RR utilization metrics among younger populations.

Residents under the age of 65 accounted for 36 of 809 (4.4%) move-ins and 28 of 736 (3.8%) move-outs from Delaware AL/RR facilities in 2021. Among the Under 65 population, the majority of move-ins (61.1%) and move-outs (92.9%) represented individuals ages 55-64. These trends likely reflect minimum AL/RR facility age requirements (e.g., 55+ Communities). PeachTree Health Group, a Sussex County facility specializing in brain injury rehabilitation, admitted 22 of the 36 (61.1%) residents under the age of 65 who moved into a Delaware AL/RR facility in 2021. Among the remaining 14 residents under the age of 65 who moved into a Delaware AL/RR facility in 2021, 13 residents were age 55-64.