

POLICY DEVELOPMENT

Health Trends

Secretary Molly Magarik, Department of Health and Social Services
Cabinet Secretary and DHCC Commissioner



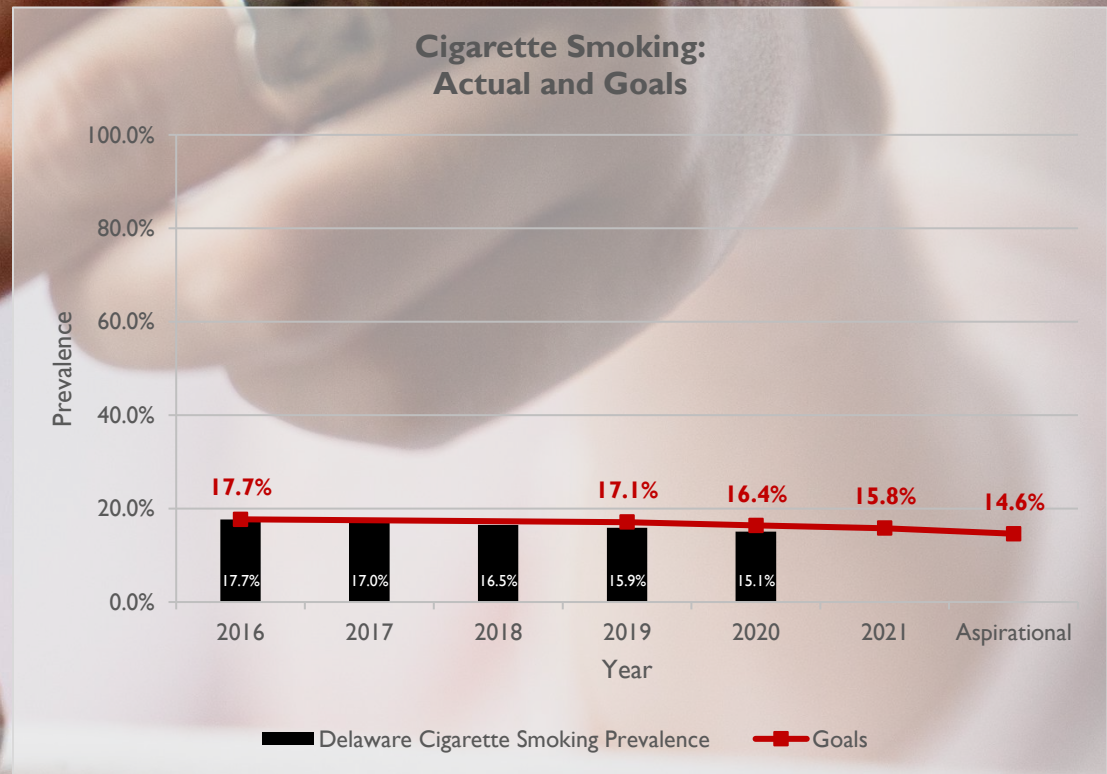
ChooseHealth
DELAWARE

HEALTH TRENDS



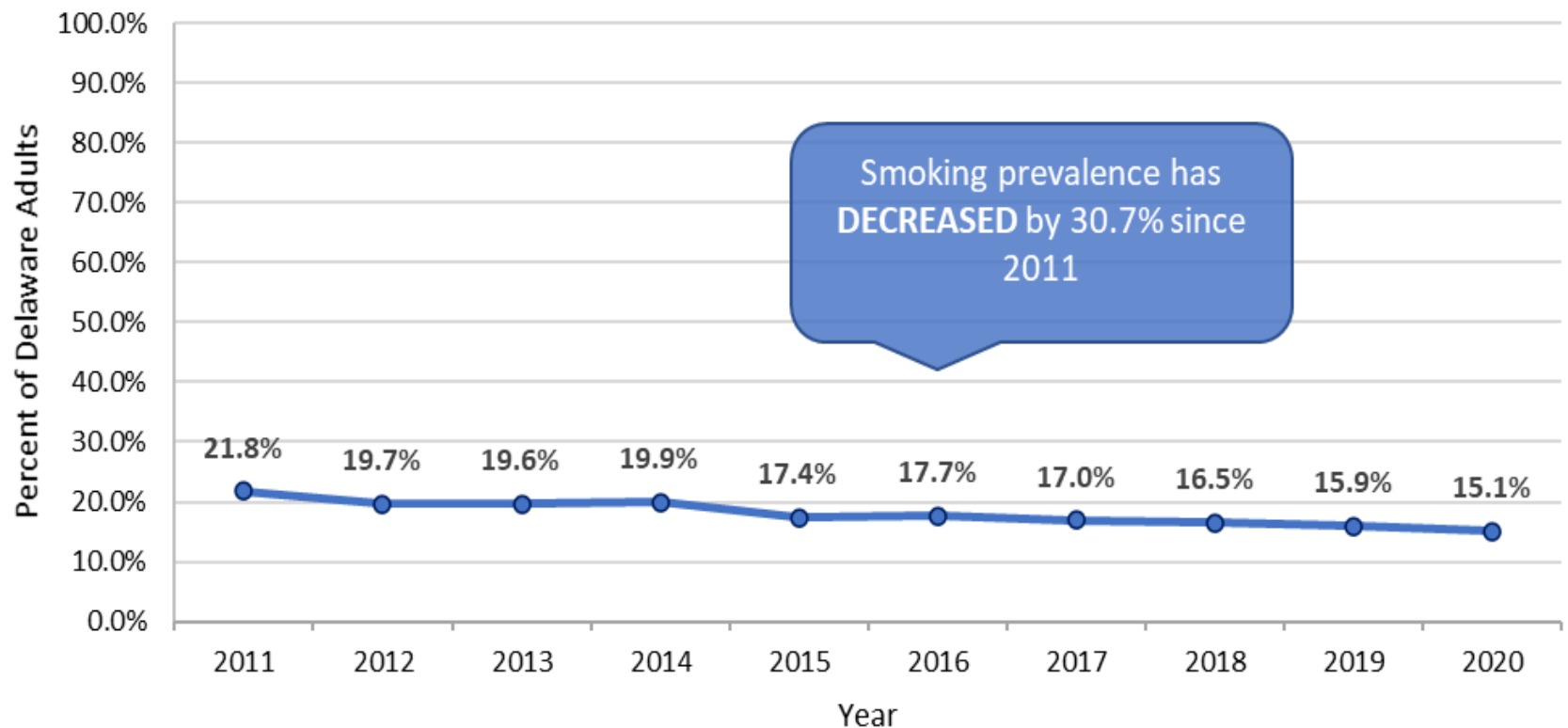
Molly Magarik, MS
Cabinet Secretary
Department of Health and Social Services

QUALITY BENCHMARK FOR TOBACCO USE



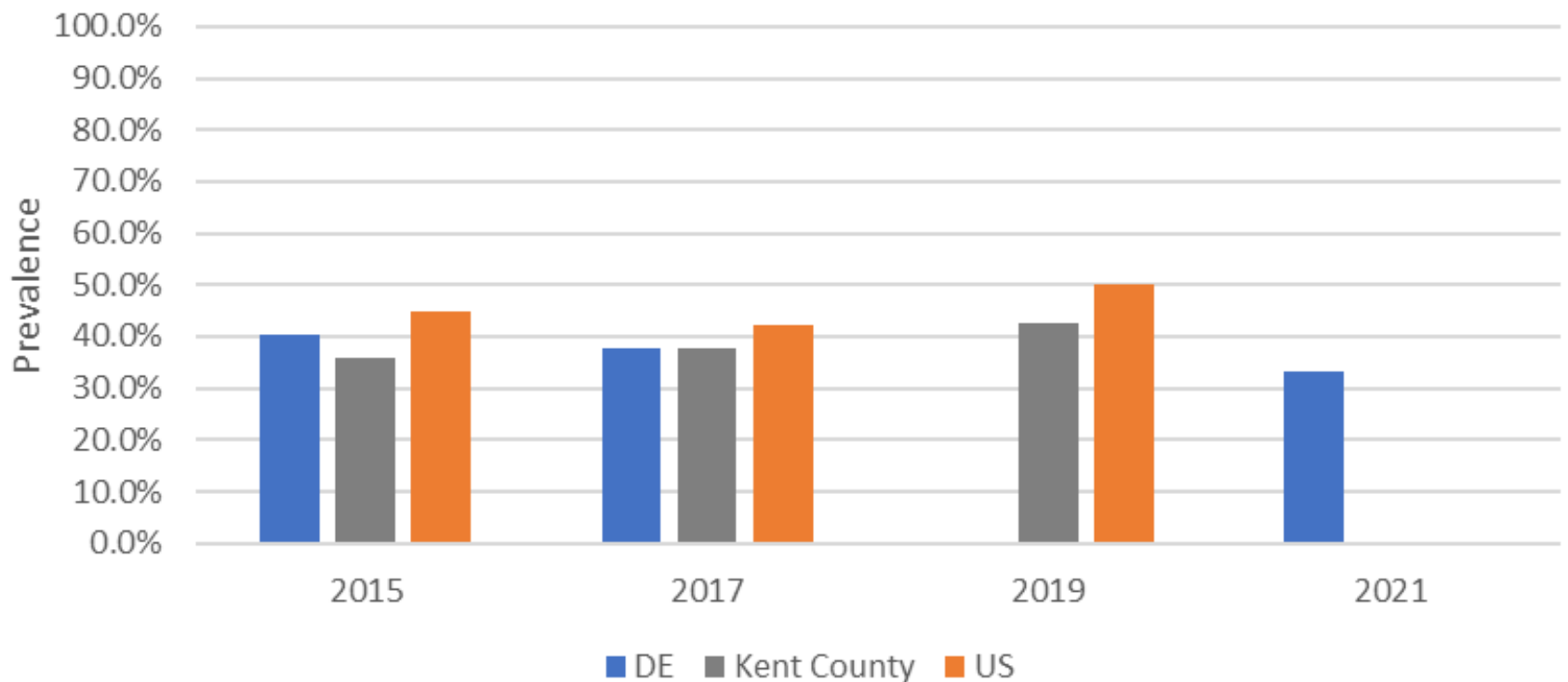
*Behavioral Risk Factor Surveillance System, CDC

Delaware Adult Cigarette Smoking Prevalence, 2011-2020



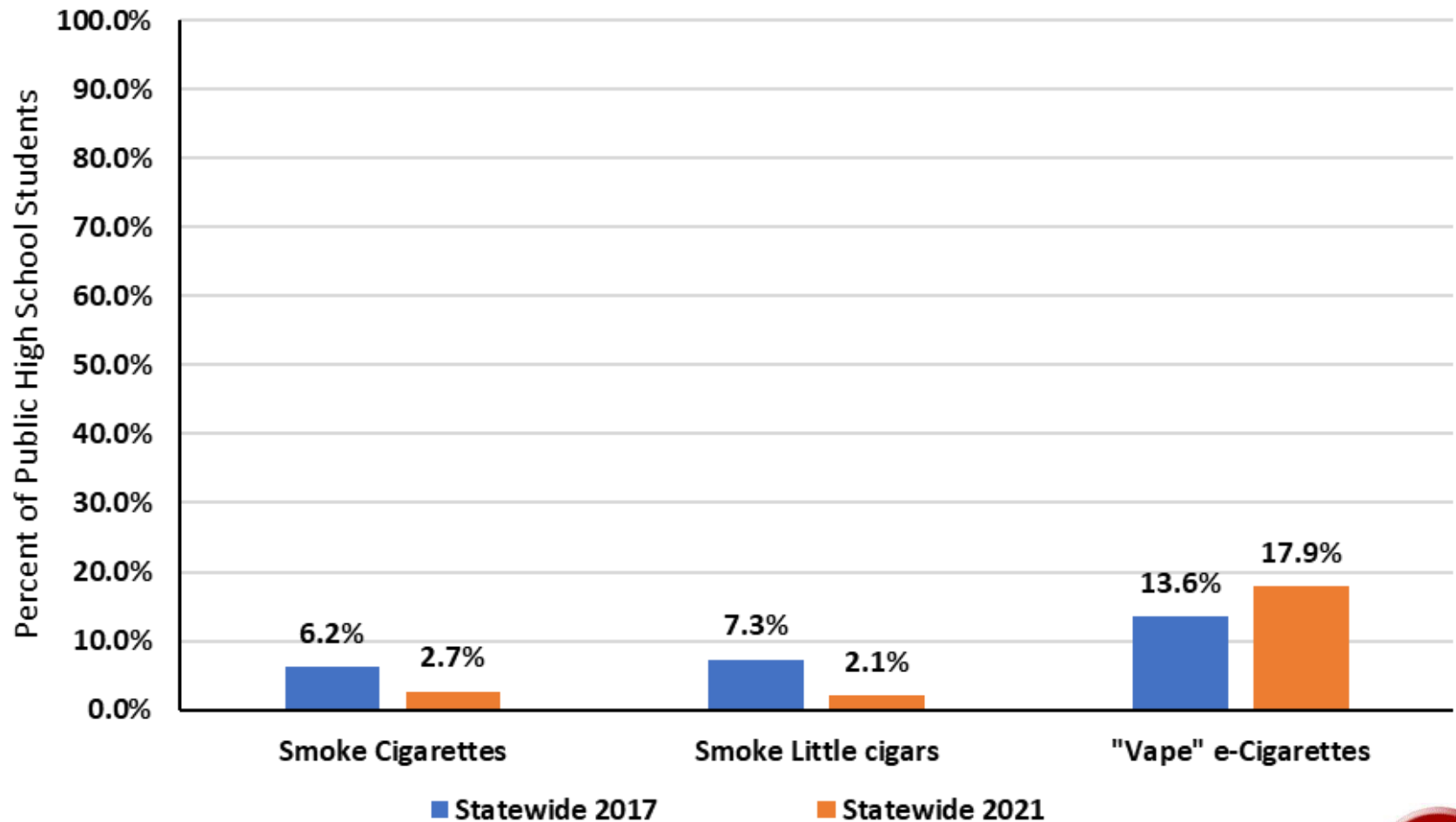
Source: Delaware Health & Social Services, Division of Public Health, Behavioral Risk Factor Survey (BRFS), 2011-2020

High School Students who EVER Used Electronic Vapor Products, 2015-2021



Source: Delaware Health & Social Services, Division of Public Health, Youth Risk Behavior Survey (YRBSS), 1999-2021

Comparison of Current Use of Different Tobacco Products, Statewide 2017 and 2021

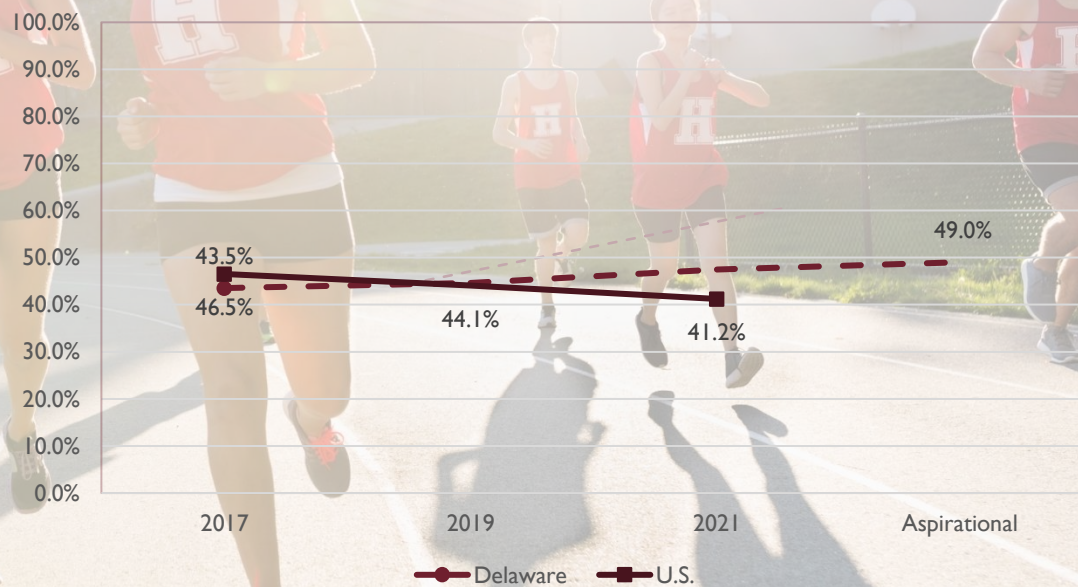


Source: Delaware Health & Social Services, Division of Public Health, Youth Risk Behavior Survey (YRBSS), 2017 & 2021



QUALITY BENCHMARK FOR HIGH SCHOOL STUDENTS WHO WERE PHYSICALLY ACTIVE

High School Students Who Were Physically Active by Percentage of the Population
Baseline and Goals

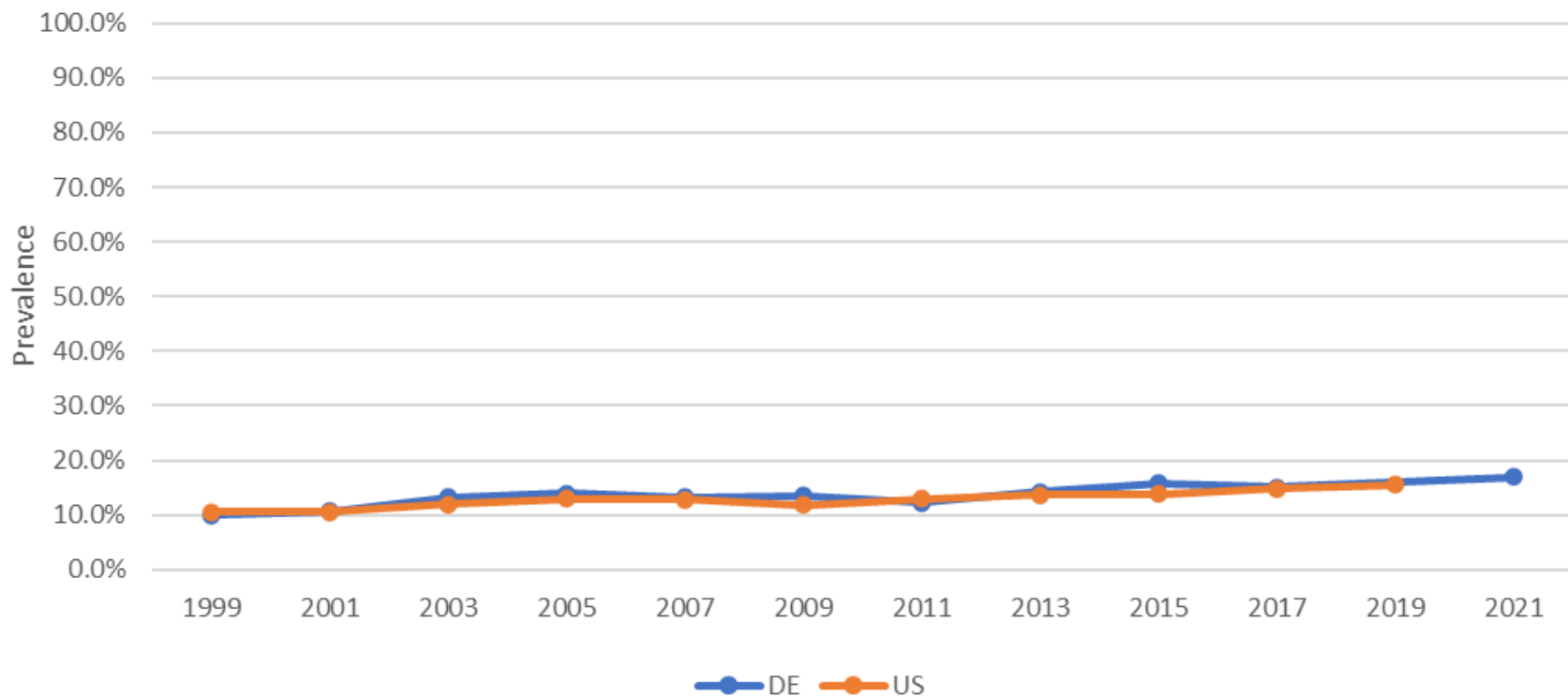


*Youth Risk Behavior Survey, CDC

CHRONIC DISEASES

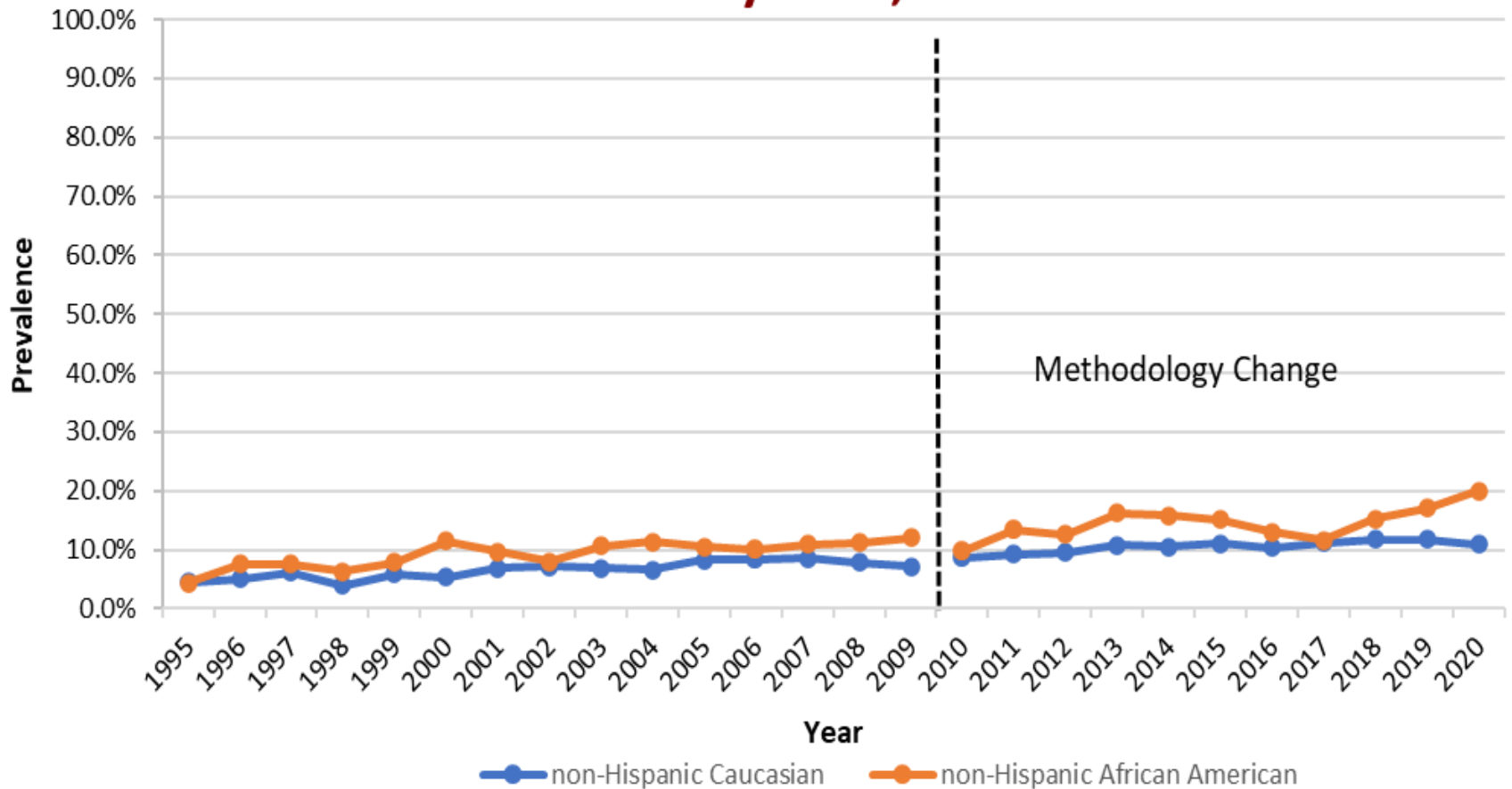


High School Students who were Obese, DE and US, 1999-2021



Source: Delaware Health & Social Services, Division of Public Health, Youth Risk Behavior Survey (YRBSS), 1999-2021

Prevalence of Delaware Adults Diagnosed with Diabetes by Race, 2000-2020



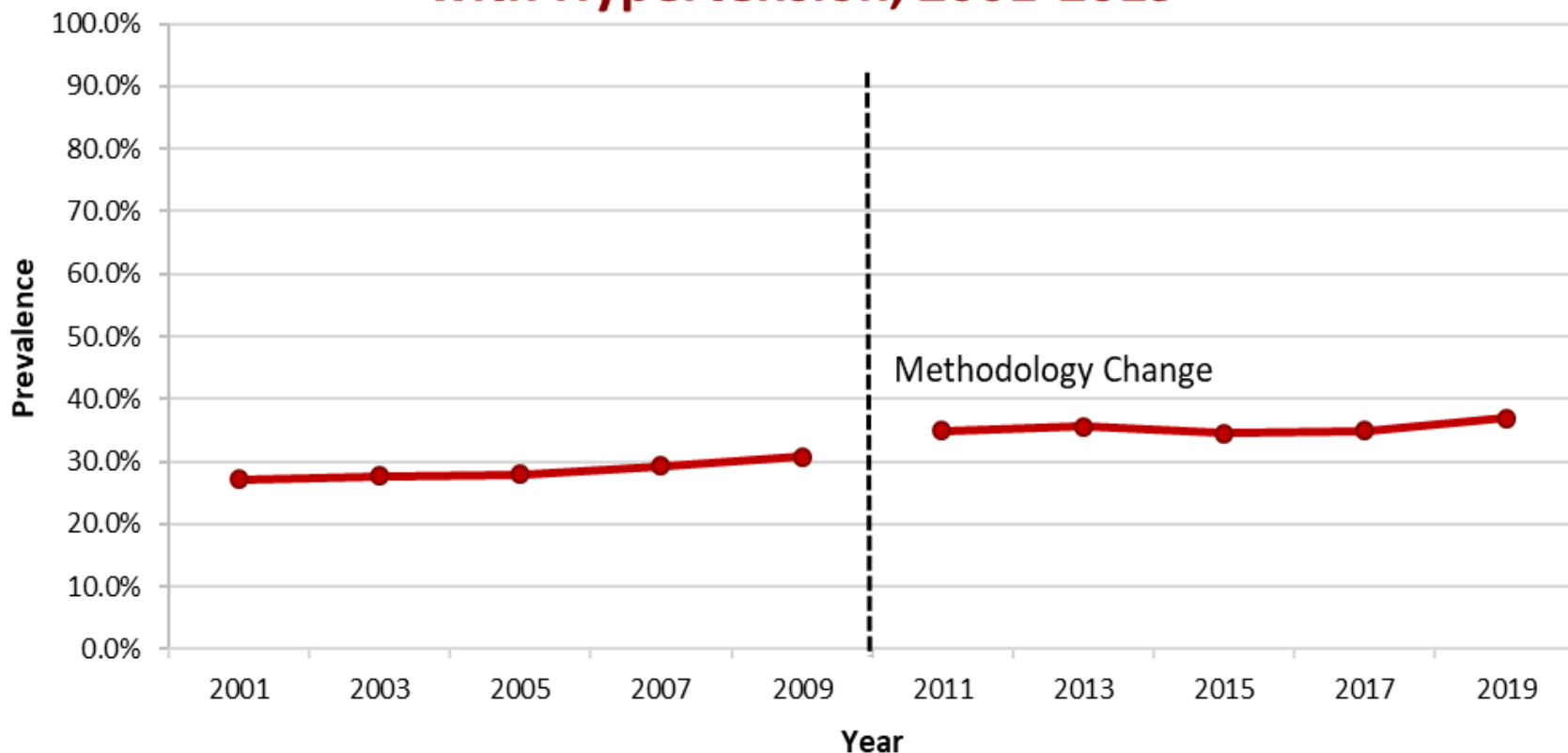
Source: Delaware Health & Social Services, Division of Public Health, Behavioral Risk Factor Survey (BRFS), 1995-2020

OBSESITY/OVERWEIGHT

- **Obesity:** 21.2 percent of obese Delaware adults have diabetes, compared to 4.7 percent of normal weight Delaware adults.
- **Overweight:** 10.8 percent of overweight Delaware adults have diabetes, compared to 4.7 percent of normal weight Delaware adults.



Prevalence of Delaware Adults Diagnosed with Hypertension, 2001-2019



Source: Delaware Health & Social Services, Division of Public Health, Behavioral Risk Factor Survey (BRFS), 2001-2019

COVID-19 AND CHRONIC DISEASE

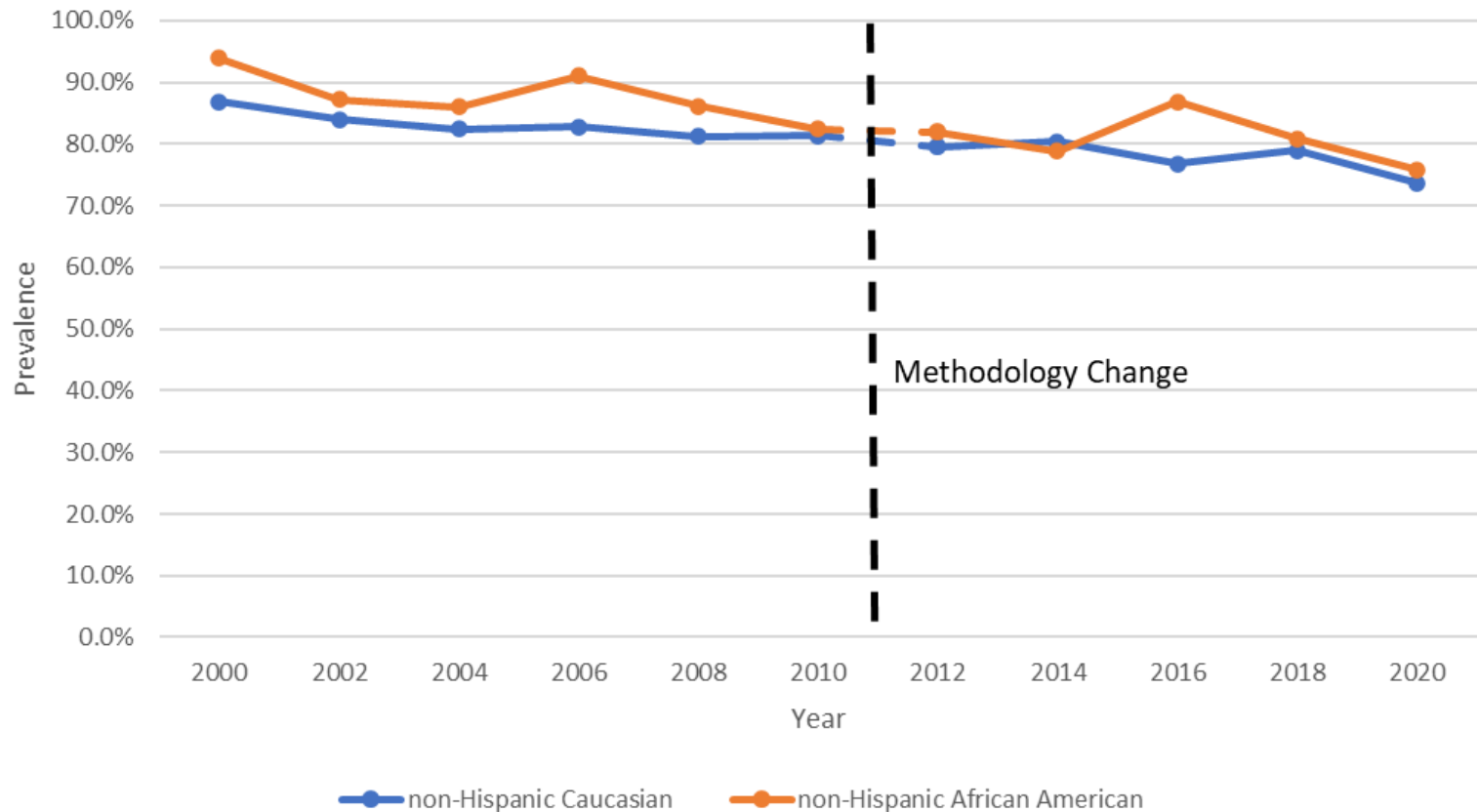
- Linked to increased severe illness and negative outcomes:
 - OBESITY
 - PREDIABETES
 - DIABETES
 - HYPERTENSION
- COVID-19 Illness is also linked to new onset diabetes
 - Could affect diabetes prevalence estimates in the upcoming years



CANCER SCREENING

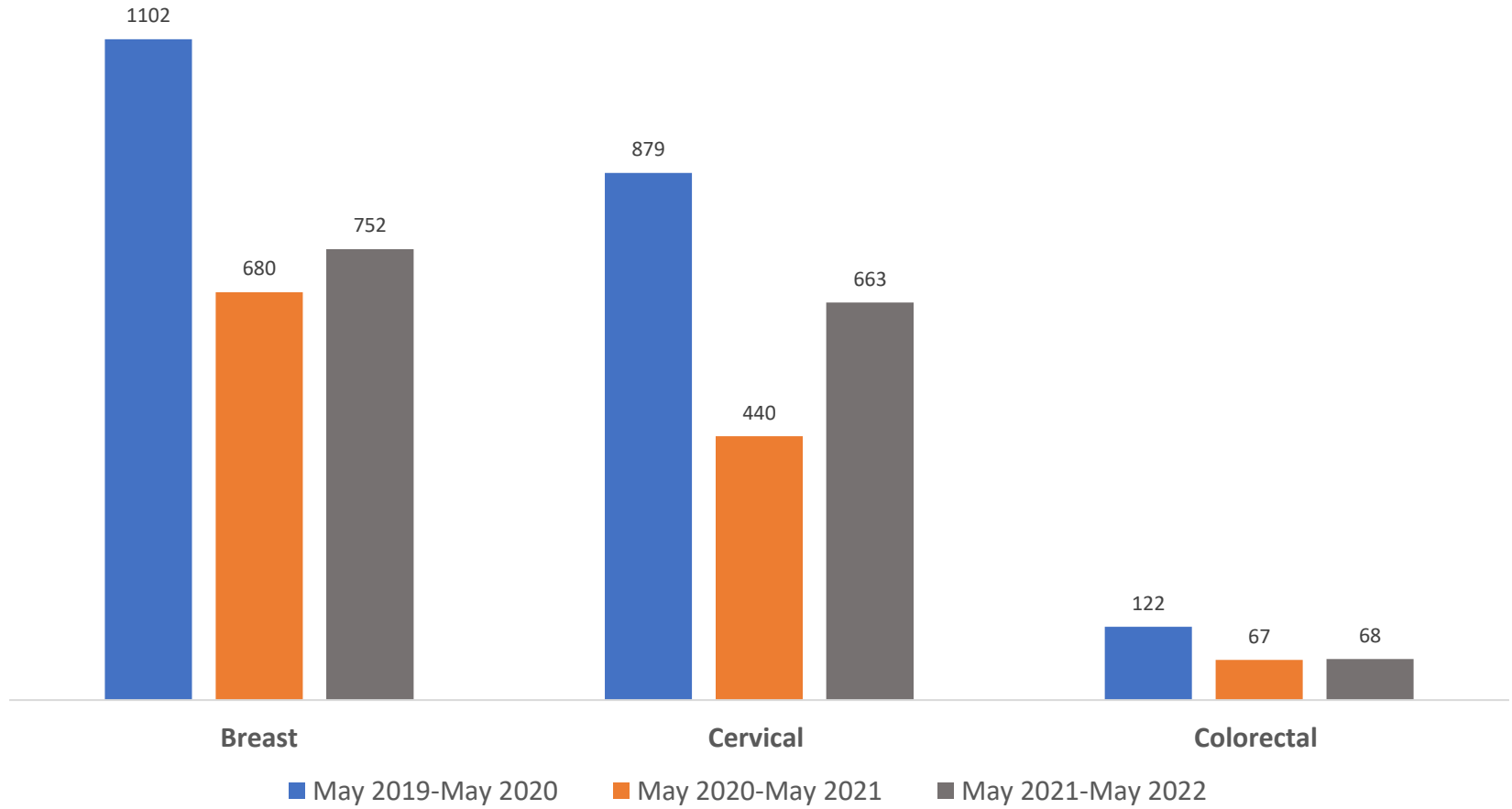


Prevalence of Delaware Women age 40 and Older Who Have Received a Mammogram Within the Past Two Years, 2000-2020



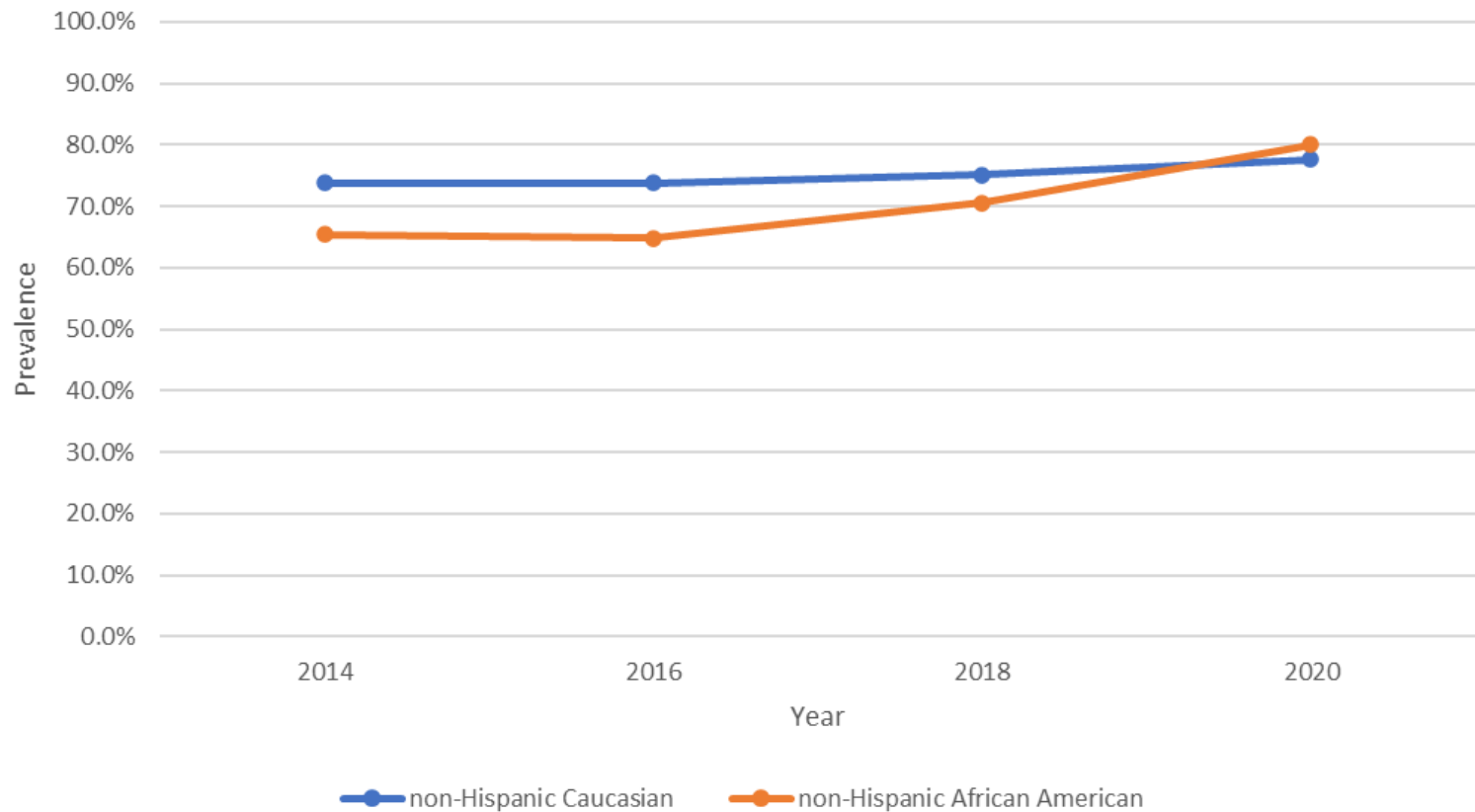
Source: DHSS, DPH, Behavioral Risk Factor Survey, 2000-2020

Screening for Life clients screened for cancer, Delaware, May 2019 to May 2022



Source: Delaware Department of Health and Social Services, Division of Public Health, Screening For Life (SFL) program, August 2022

Prevalence of Delaware Adults by Race Who Have Met the USPSTF Colorectal Cancer Screening Recommendations, 2014-2020



ESTIMATED ECONOMIC COSTS OF CANCER

- According to the National Institutes of Health, the projected National total cost of cancer care in 2030:
 - \$245 Billion
 - 30% increase from 2015
 - Lung Cancer, Prostate Cancer and Breast Cancer estimated to have the largest expenditures.
 - Thyroid cancer, melanoma, kidney cancer are projected to increase by at least 50% between 2019 and 2030.

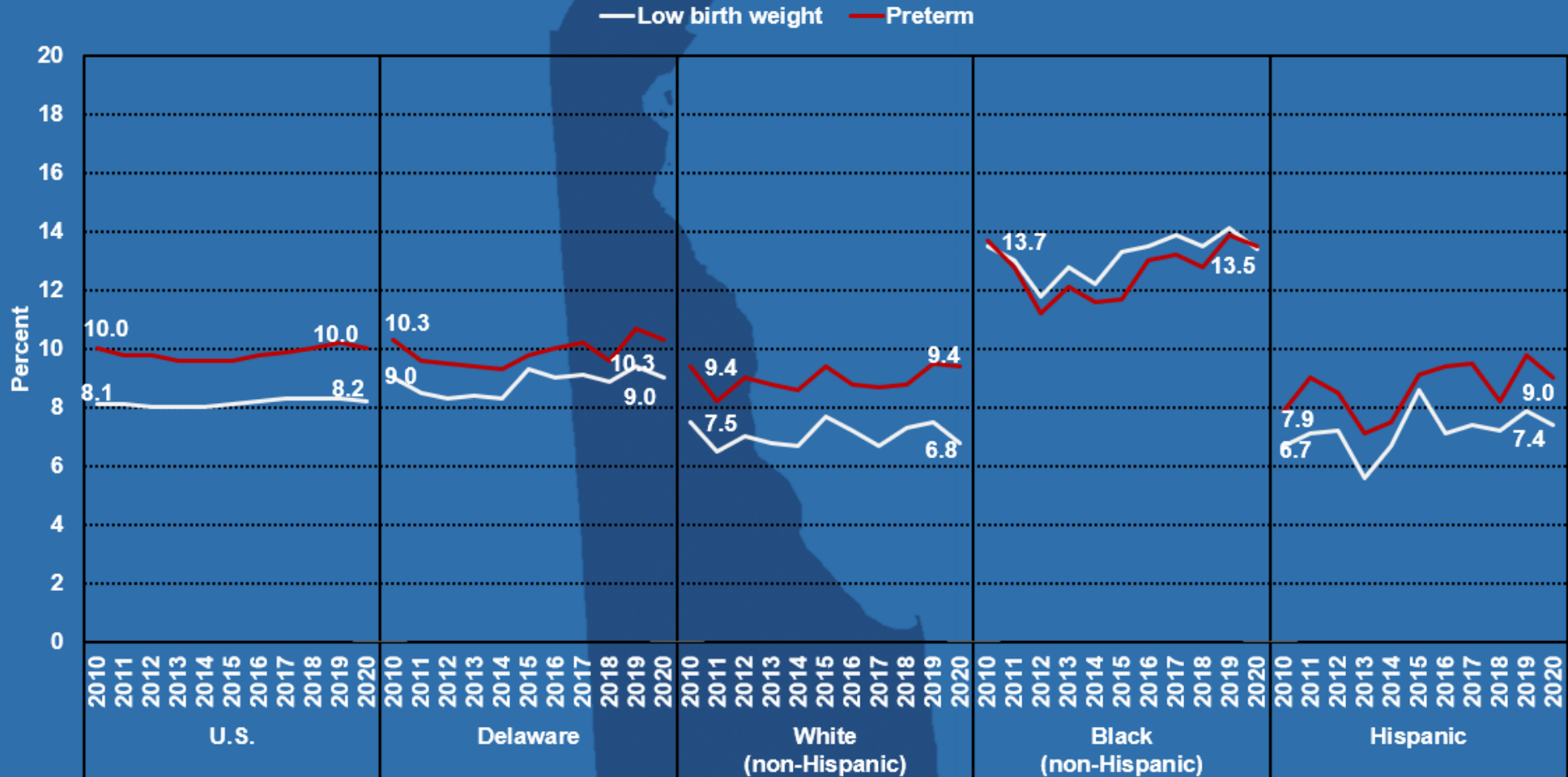


MATERNAL AND CHILD HEALTH



Preterm Births

Low birth weight and Preterm births in the U.S., Delaware, and Race and Ethnicity, 2010-2020

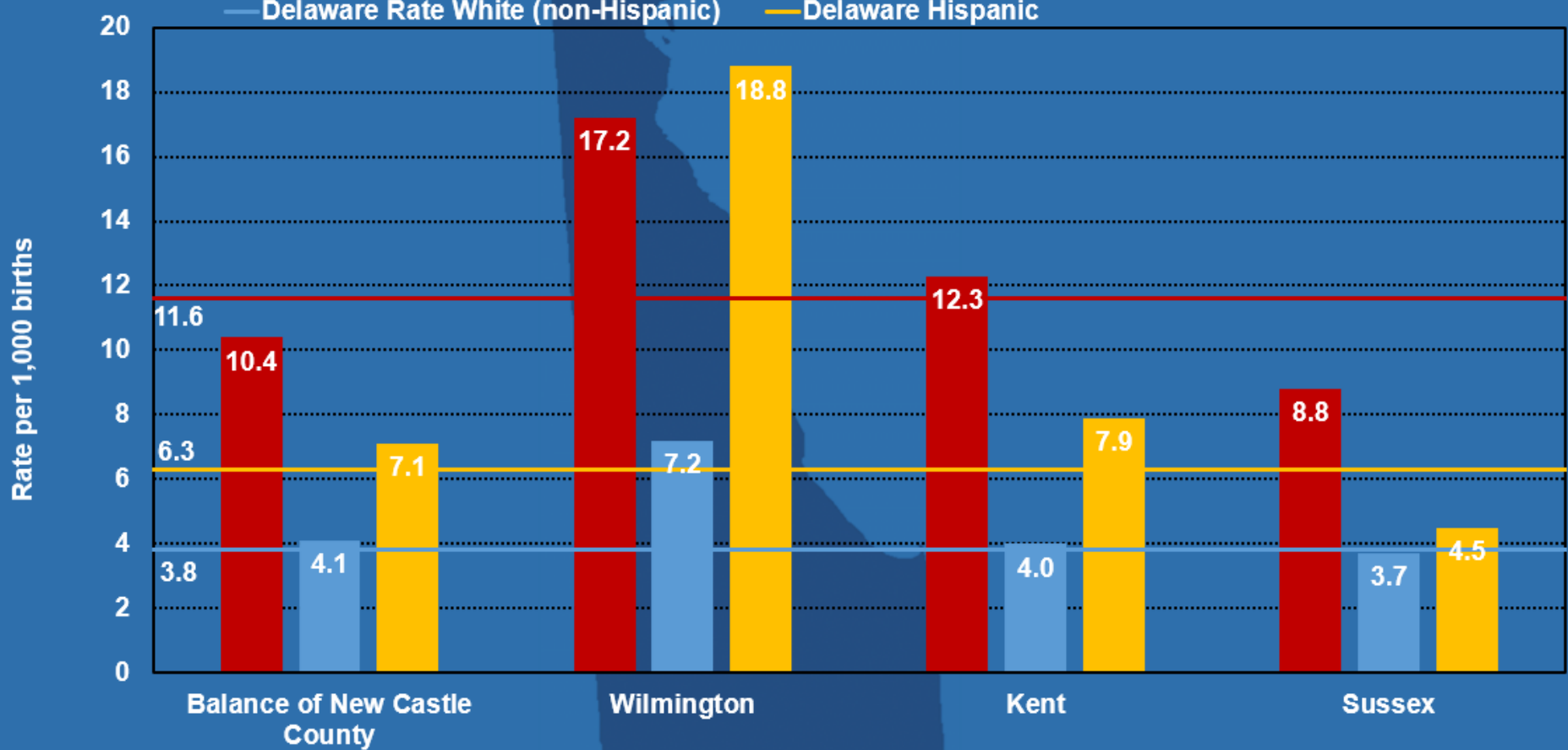


Source: Delaware Health and Social Services, Division of Public Health, Delaware Health Statistics Center, Vital Records Data, 2010-2020.

Infant Mortality

Delaware, 5-year Infant Mortality Rates by County and Race, 2016-2020

- Black (non-Hispanic)
- White (non-Hispanic)
- Hispanic
- Delaware Rate Black (non-Hispanic)
- Delaware Rate White (non-Hispanic)
- Delaware Rate Hispanic

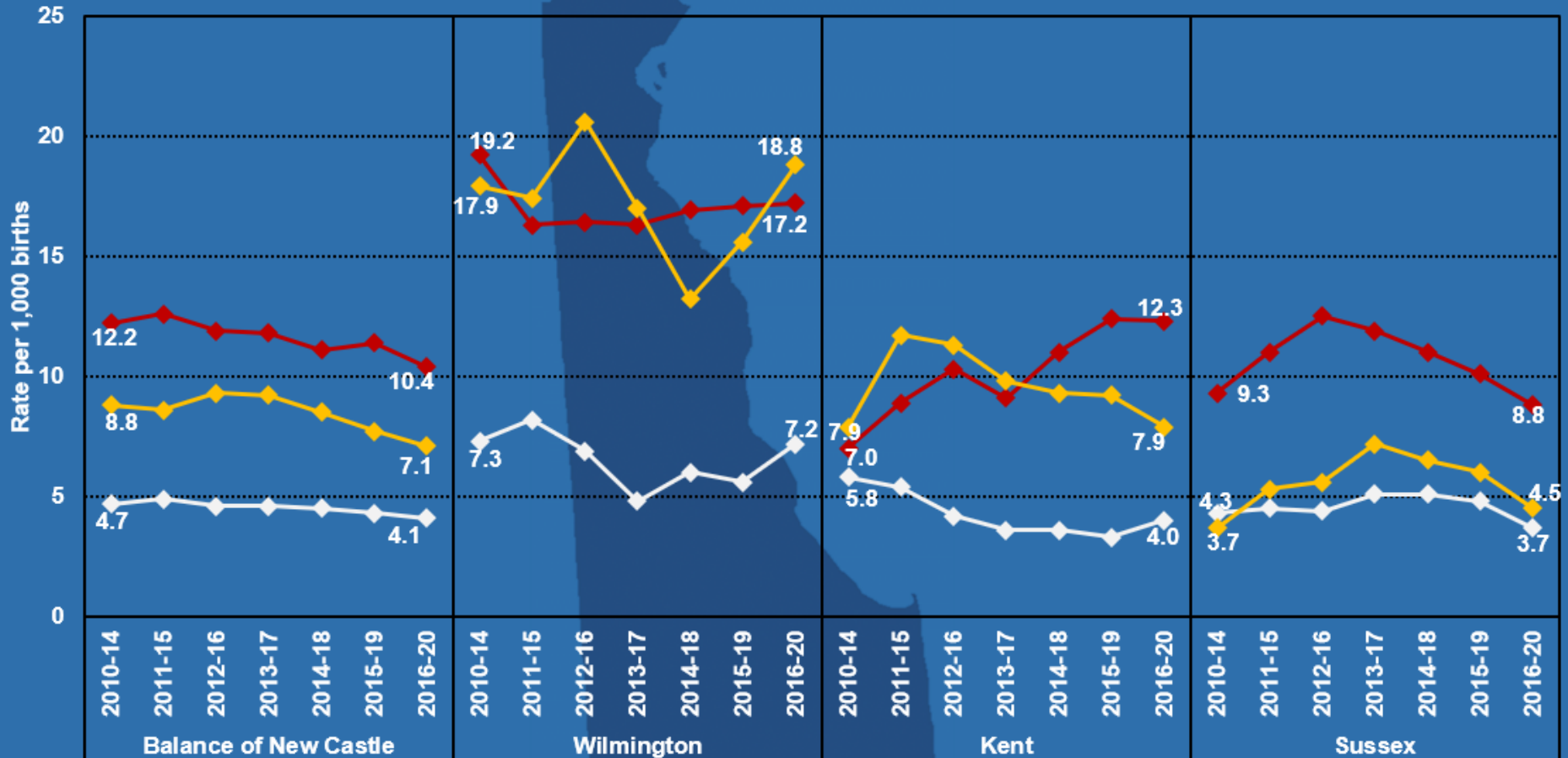


Source: Delaware Health and Social Services, Division of Public Health, Delaware Health Statistics Center, Vital Records Data, 2010-2020.

Infant Mortality

Delaware, 5-year Infant Mortality Rates by County and Race, 2010-2020

Black (non-Hispanic) White (non-Hispanic) Hispanic

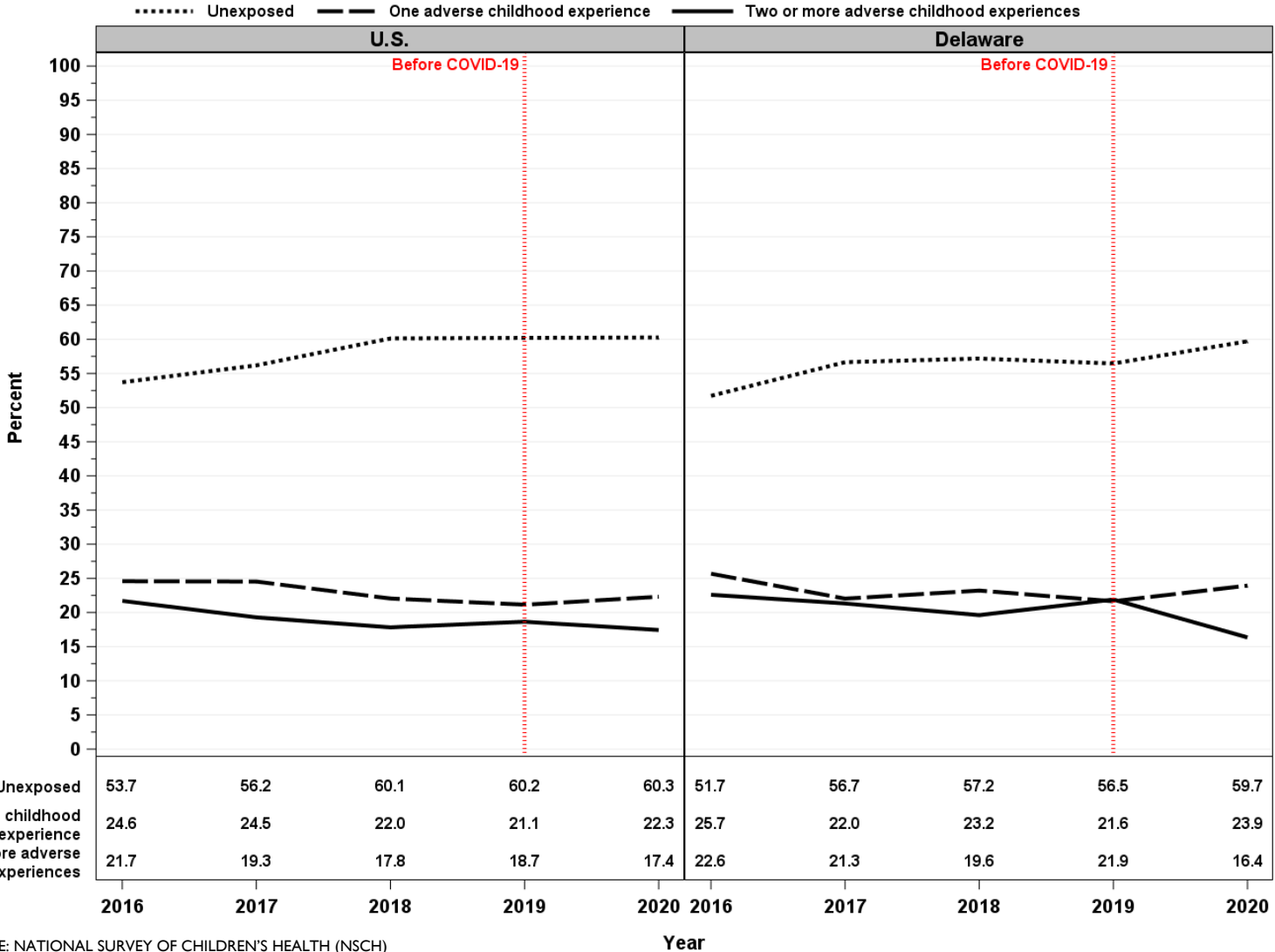


Notes: Rates fewer than 20 cases in the numerator does not meet the reliability of precision

Source: Delaware Health and Social Services, Division of Public Health, Delaware Health Statistics Center, Vital Records Data, 2010-2019.

Adverse Childhood Experiences

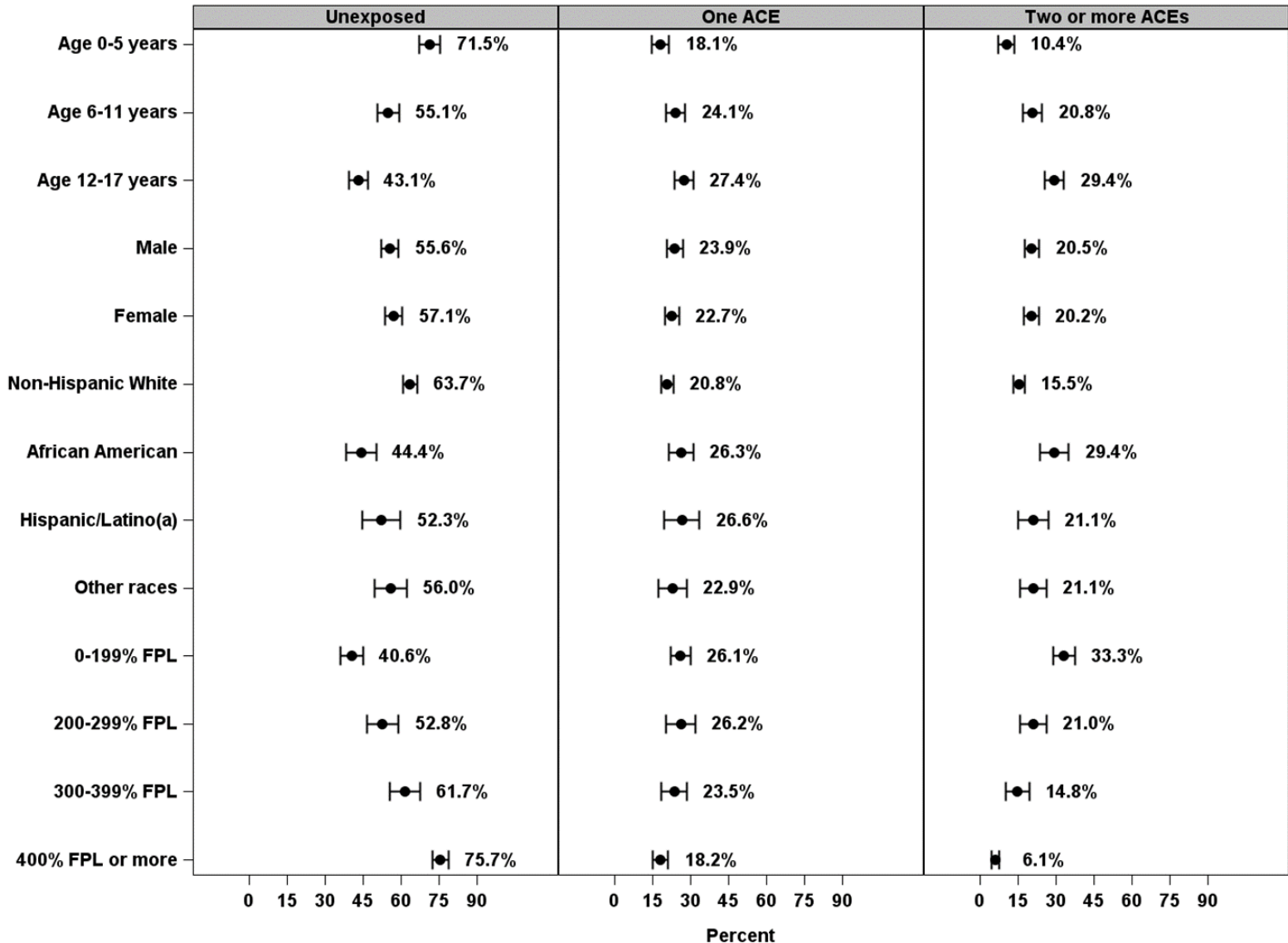
Adverse childhood experiences (ACEs) composite measure as reported by a parent/guardian in the U.S. and in Delaware, 2016-2020



SOURCE: NATIONAL SURVEY OF CHILDREN'S HEALTH (NSCH)

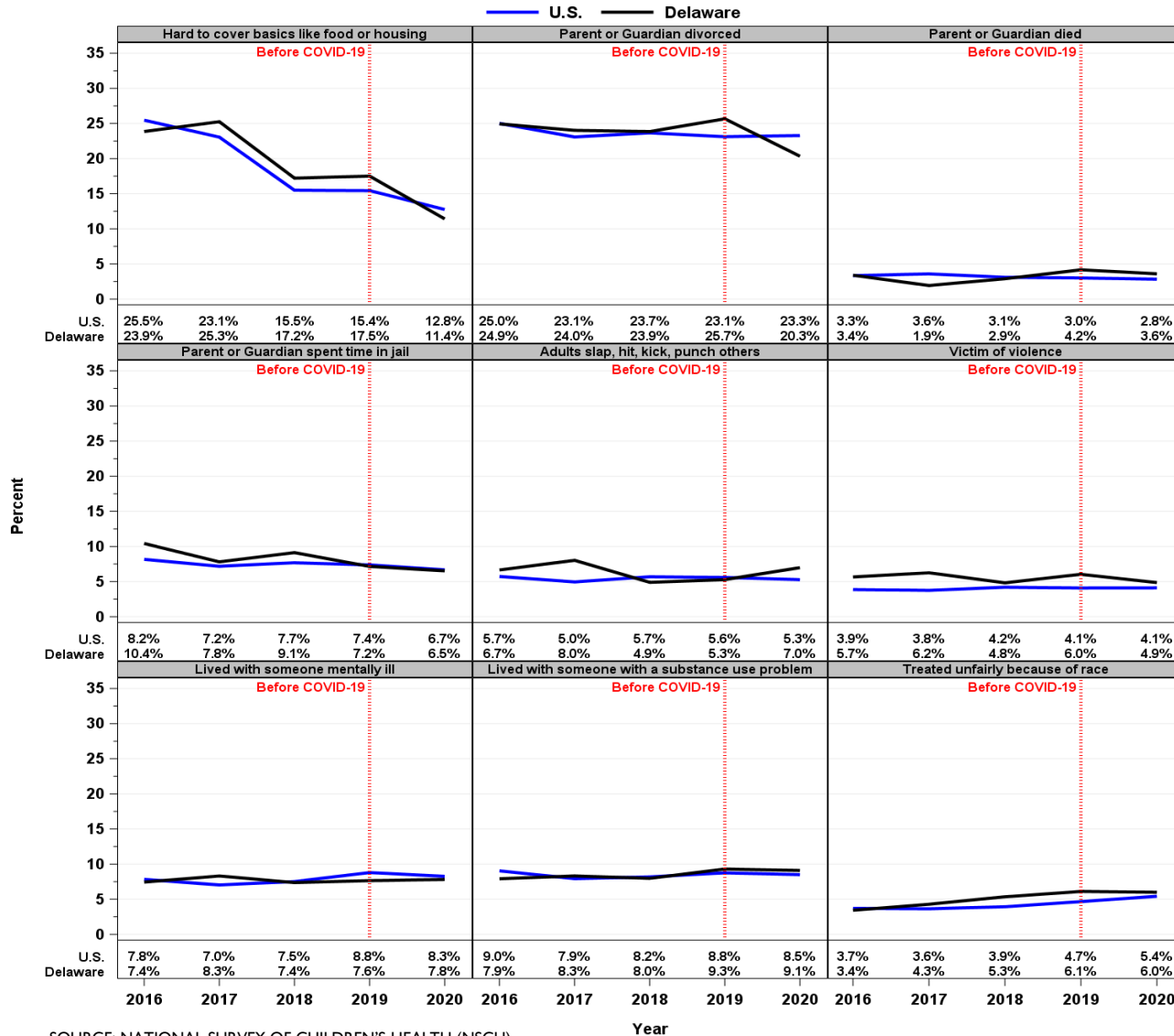
Adverse Childhood Experiences cont.

Adverse childhood experiences by key demographic characteristics in Delaware, 2016-2020



Adverse Childhood Experiences cont.

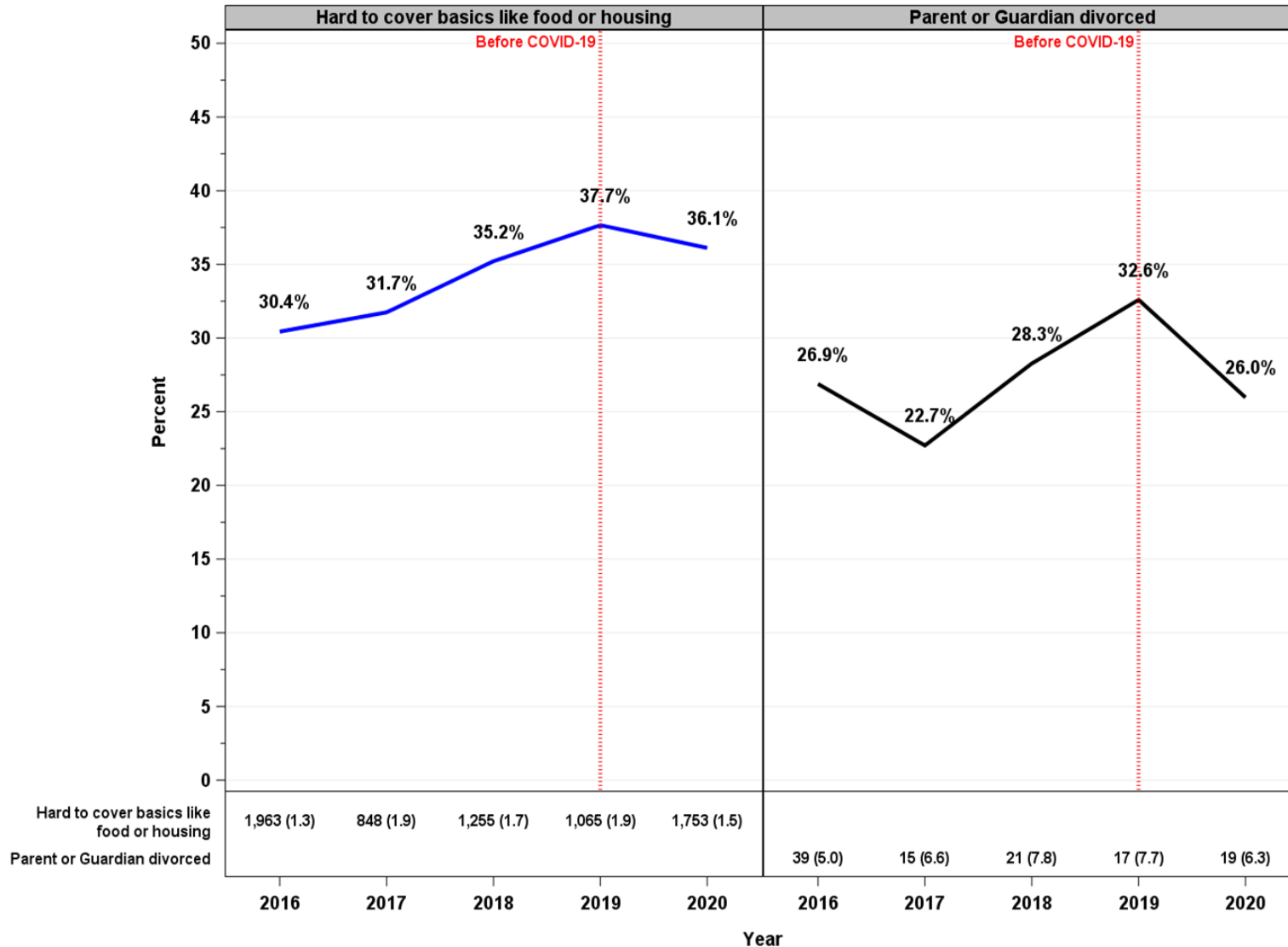
Individual adverse childhood experiences (ACEs) as reported by a parent/guardian in the U.S. and in Delaware, 2016-2020



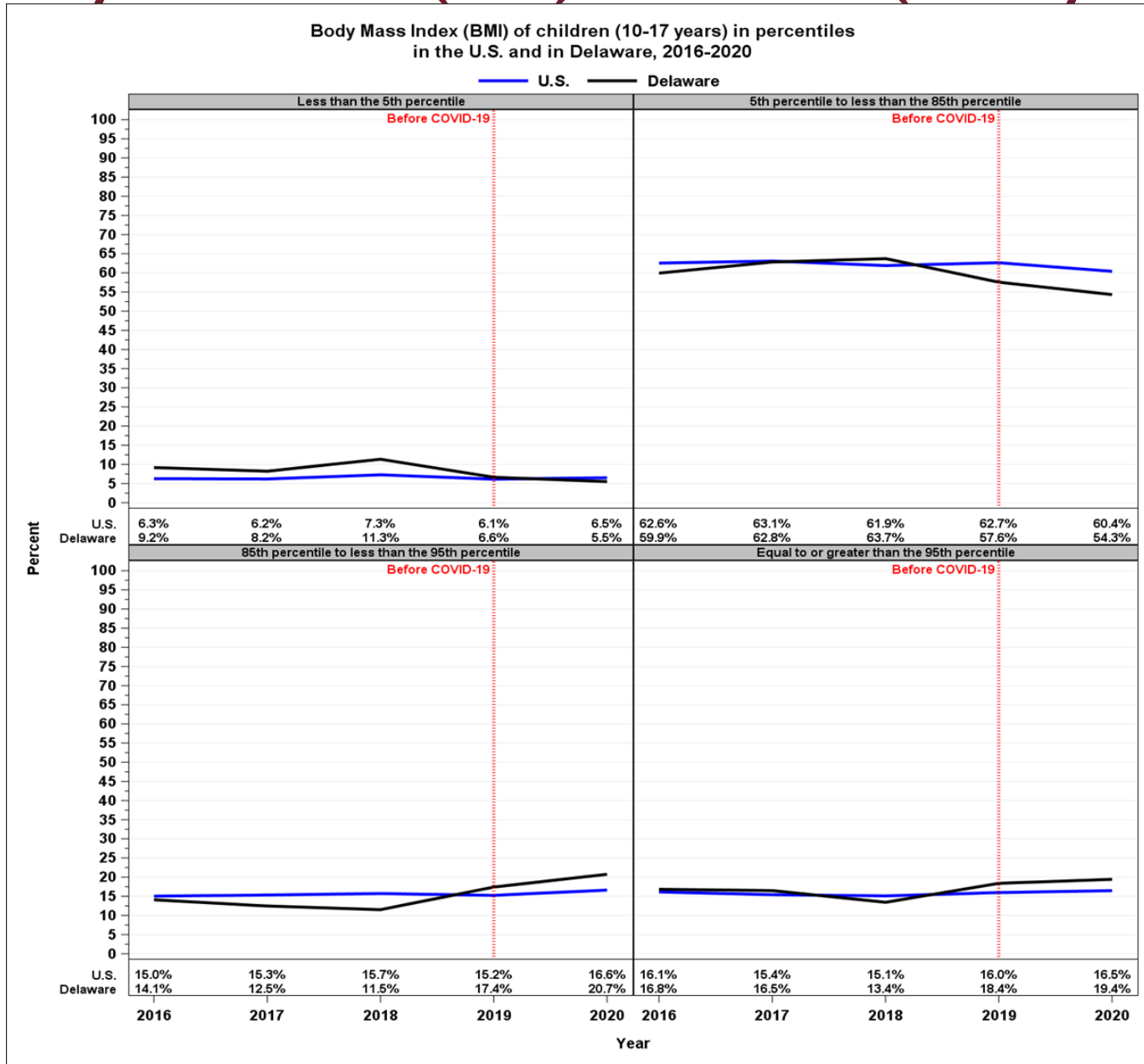
SOURCE: NATIONAL SURVEY OF CHILDREN'S HEALTH (NSCH)

Developmental Screening

Percent of children (9-35 months) who received a developmental screening using a parent-completed screening tool in the U.S. and in Delaware, 2016-2020

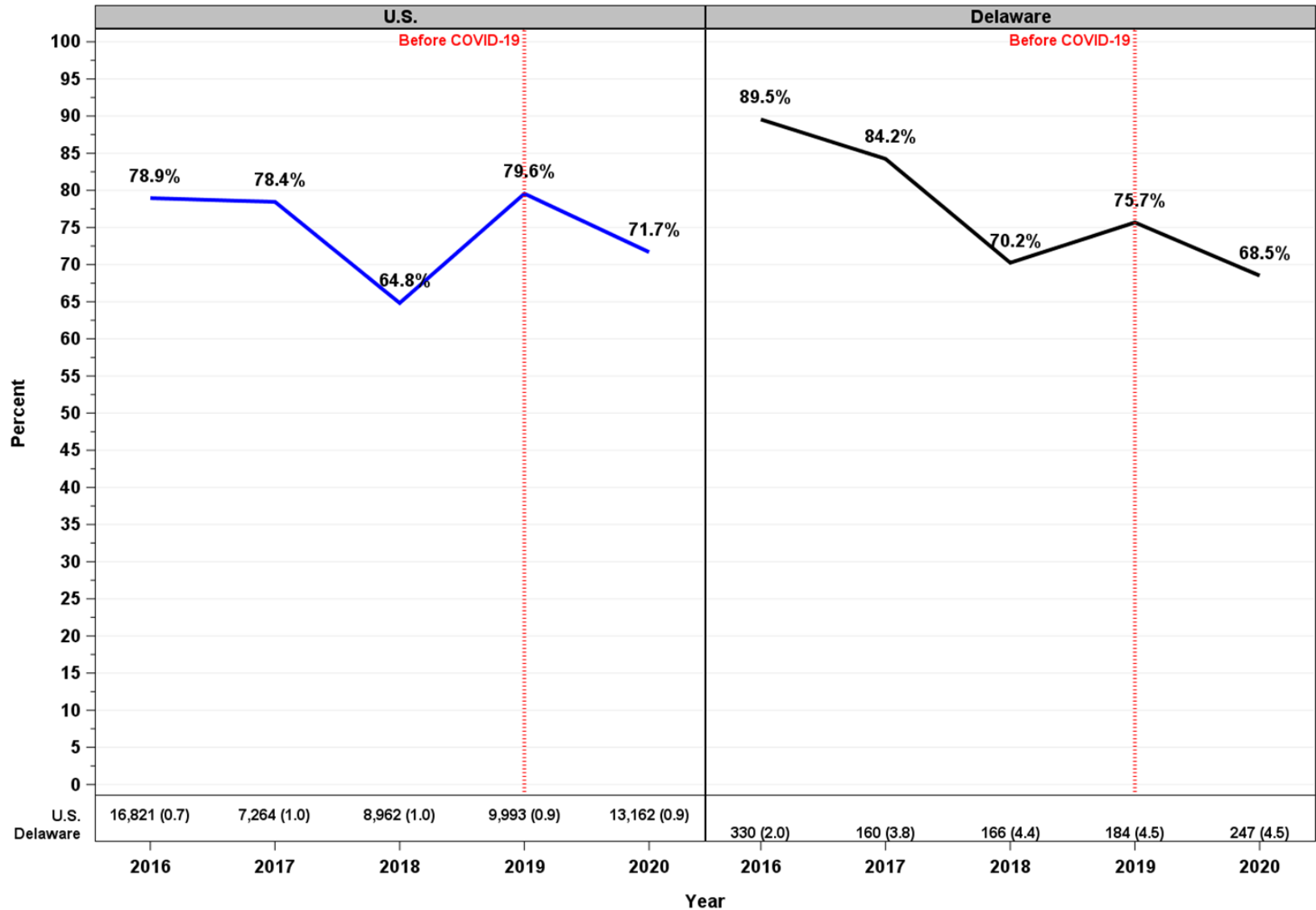


Body Mass Index (BMI) of Children (10-17 years)



Adolescent Well Visit

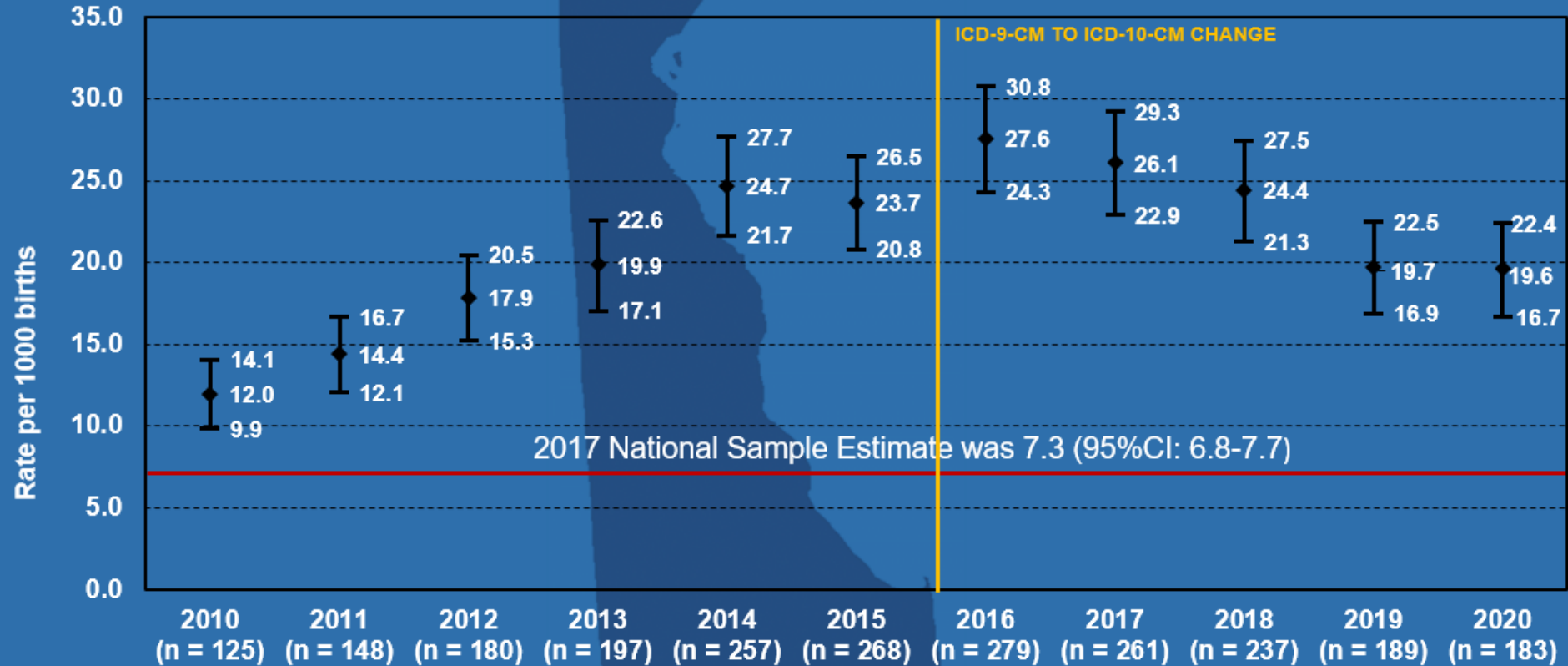
Percent of adolescents (12-17 years) with a preventive medical visit in the past year in the U.S. and in Delaware, 2016-2020



Neonatal Abstinence Syndrome

Neonatal Abstinence Syndrome Rates for 2010-2020 with 95% Confidence Intervals

◆ NAS RATES — UCL — LCL



Source: Delaware Health and Social Services, Division of Public Health, Delaware Health Statistics Center, Hospital Discharge and Vital Records Data, 2010-2020.

*Rates are presented with 95% confidence intervals; UCL = upper confidence limit; LCL = lower confidence limit

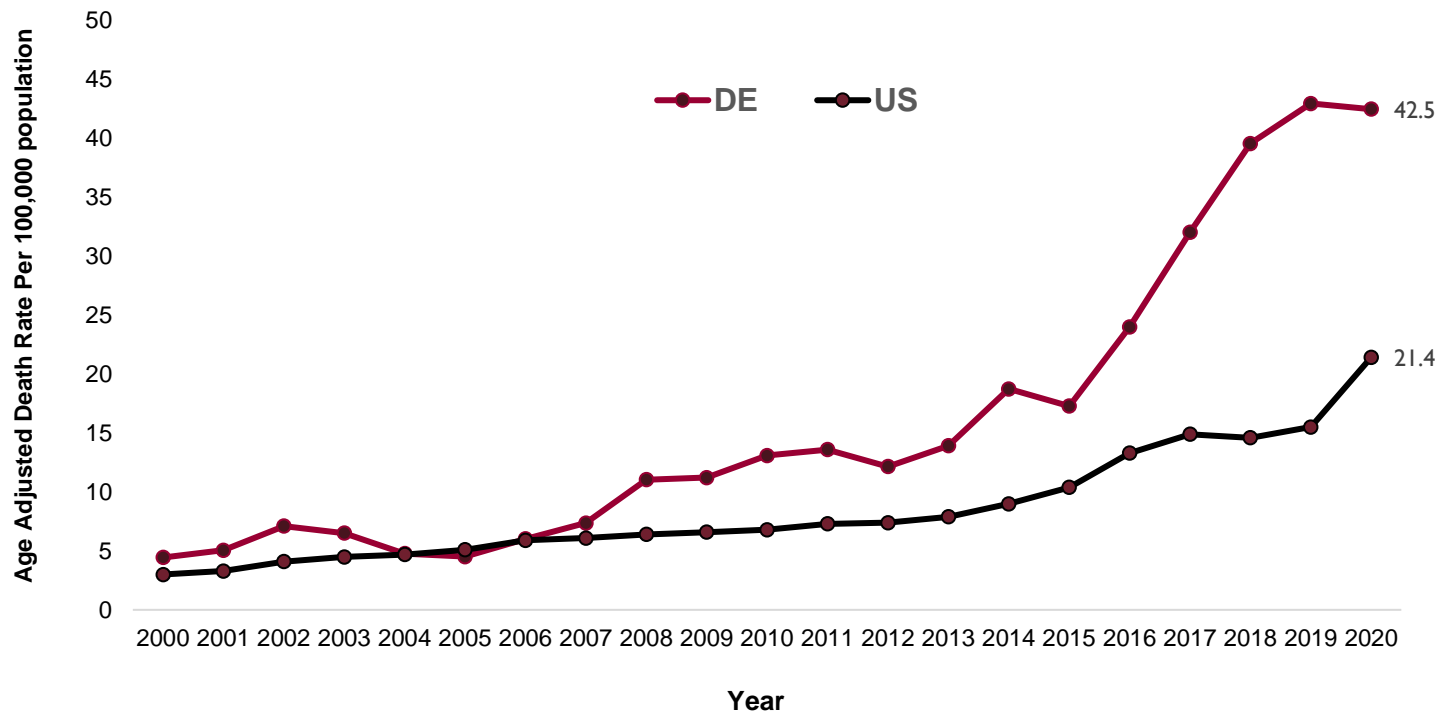
2015 data contains ICD-9-CM and ICD-10-CM changes. ICD-9-CM excludes iatrogenic cases.

SUBSTANCE MISUSE AND MENTAL HEALTH



REVERSING THE OPIOID CRISIS

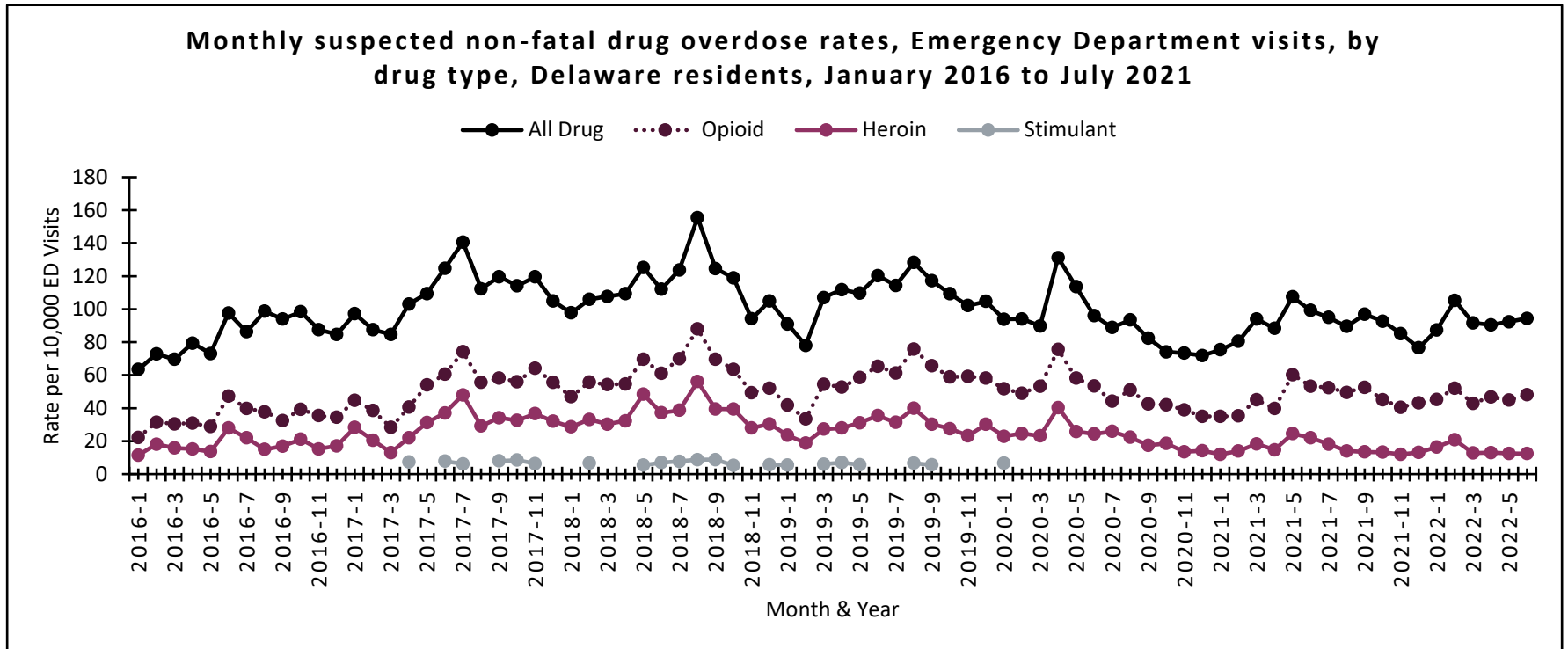
Rate of Opioid-Related Overdose Deaths in Delaware



Source: Delaware Health and Social Services, Division of Public Health, Delaware Health Statistics Center

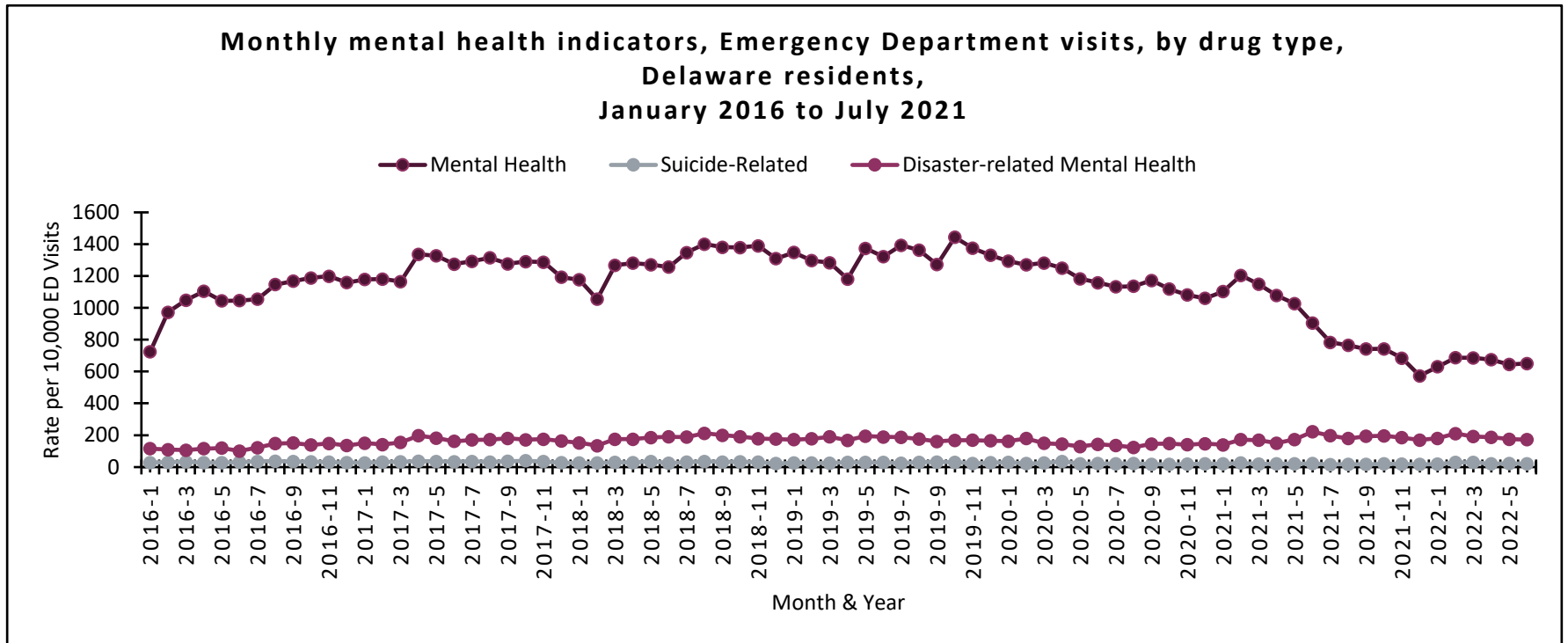
Note: Age-adjusted rates are based on the 2000 US standard population. Population estimates are from the Delaware Population Consortium.

SUSPECTED NON-FATAL DRUG OVERDOSE EMERGENCY RATES



Data source: Delaware Department Health and Social Services, Division of Public, Health Statistics Center and Delaware Electronic Surveillance System for the Early Notification of Community-based Epidemics (DE-ESSENCE). Notes: All drug, opioid, heroin, and stimulant categories were defined using syndromic surveillance definitions found in the National Syndromic Surveillance Platform (NSSP) and utilized in the Overdose Data to Action Technical Guidance for the Drug Overdose Surveillance and Epidemiology (DOSE) System, as of August 30, 2022. Rates based on counts less than 20 were suppressed.

MENTAL HEALTH EMERGENCY RATES



Data source: Delaware Department Health and Social Services, Division of Public Health Statistics Center and Delaware Electronic Surveillance System for the Early Notification of Community-based Epidemics (DE-ESSENCE). **Notes:** Mental health, suicide-related, and disaster-related mental health were defined using syndromic surveillance definitions found in the National Syndromic Surveillance Platform (NSSP) and utilized in the Overdose Data to Action Technical Guidance for the Drug Overdose Surveillance and Epidemiology (DOSE) System, as of August 30, 2022. Rates based on counts less than 20 were suppressed.