



*Delaware Health and Social Services*

*Division of Medicaid and Medical Assistance*

**CHILDREN WITH MEDICAL COMPLEXITY ADVISORY  
COMMITTEE**



# CHILDREN WITH MEDICAL COMPLEXITY

## ADVISORY COMMITTEE AGENDA

- Welcome and Roll Call – DMMA Director, CMCAC Chair, Steve Groff
- Review Notes from July 17<sup>th</sup> meeting
- General Updates
  - 4/17/19 Meeting notes revisions
  - Annual Summary
  - [Website – links and family involvement](#)
- Skilled Home Health Workgroup Quarterly Report
- Private Duty Nursing Workforce Study
- Emergent Care Decision Tree
- Data Workgroup Quarterly Report
- Data Update
- Private Duty Nursing Gaps in Care Update
- Public Comment



# SKILLED HOME HEALTH NURSING WORK GROUP

# QUARTERLY REPORT

PERIOD ENDING SEPTEMBER 30, 2019

## QUARTER 3 ACTIVITIES

- Met bi-weekly
- Arranged for University of Delaware Center for Disabilities Studies to conduct the Workforce Capacity Study
- Finalized definition of emergent care and PDN Emergent Care Decision Tree
- Obtained hospital and home health agency perspective on Prior Authorization (PA) process
- Identified need to review DE Medicaid Provider Manual content specific to PA process
- Identified need to review DE Home Health Agency Regulations specific to the provision of PDN

## KEY ISSUES TO NOTE

- Workforce Capacity Study is moving forward
- Emergent Care definition and Emergent Care Decision Tree finalized with extensive family input
- Obtained information on PA process from multiple perspectives

## UPCOMING ACTIVITIES

- Conduct Workforce Capacity Study
- Develop toolkit for navigating the PA Process
- Complete review of Medicaid Provider Manual and Home Health Agency Regulations
- Upcoming meetings: 10/21, 11/4, 11/18

### 2019 Q1

- Finalize work plan
- Present highlights to Advisory Committee

### 2019 Q2

- Design workforce study
- Review existing provider/provider agency PA process

### 2019 Q3

- Develop PDN Emergent Care definition and Decision tree
- Arrange for administration of Workforce Capacity Study
- Collect feedback regarding PA process from multiple stakeholder groups

### 2019 Q4

- Conduct Workforce Capacity Study
- Develop toolkit for PA process
- Complete review of Provider Manual, Home Health Agency Regulations
- Review timeline for cultural competency training prior to year end based on Family Voices' availability



---

**EMERGENT CARE DECISION TREE**  
**STRENGTHEN THE NETWORK OF HOME HEALTH**  
**PROVIDERS FOR CHILDREN WITH MEDICAL COMPLEXITY.**



# Private Duty Nursing Emergent Care Decision Tree

October 10, 2019

## Emergent Private Duty Nursing (PDN) Need

1. Nurse/nursing agency conducts an assessment with the family/guardian to determine health and safety needs of member.

2. Nurse/nursing agency notifies the member's MCO care coordinator and physician (PCP) about the emergent PDN need/situation.

Is the backup/secondary caregiver able and available to provide and/or direct care?

YES

NO

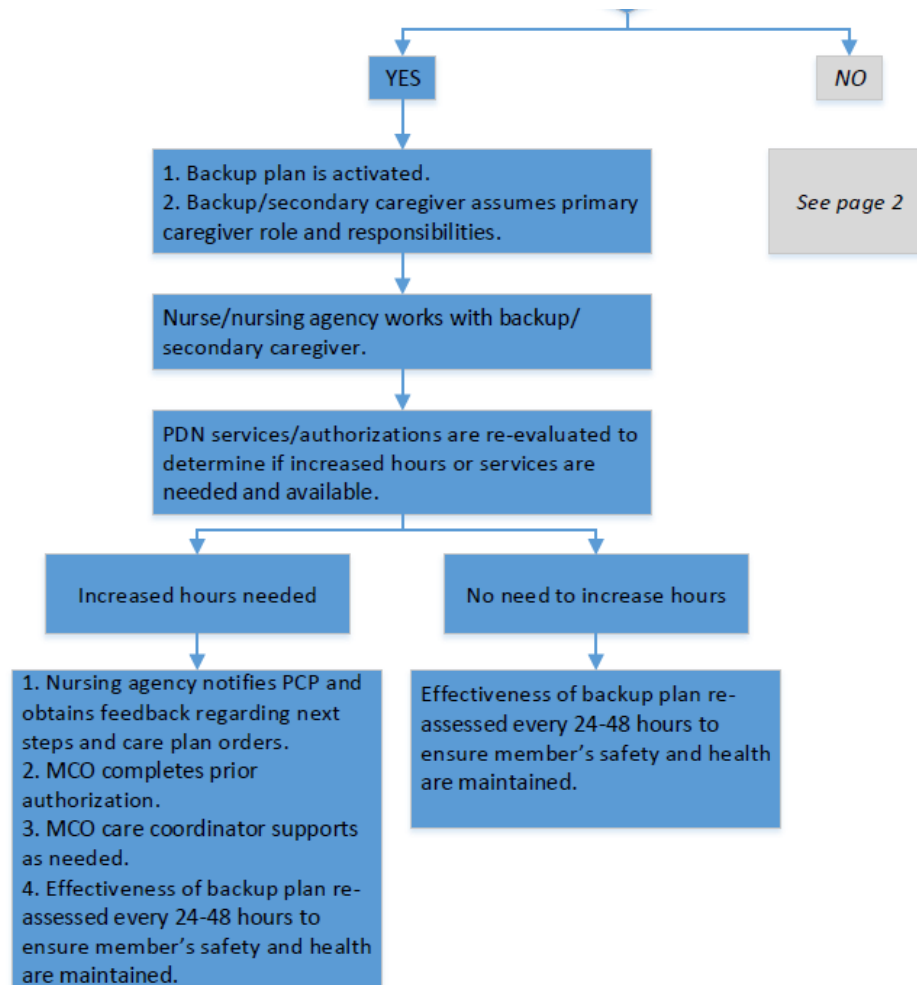
Emergent PDN Need = Parent/primary caregiver is unexpectedly unable to provide or direct care for the member with complex medical needs

DRAFT



# Private Duty Nursing Emergent Care Decision Tree

October 10, 2019

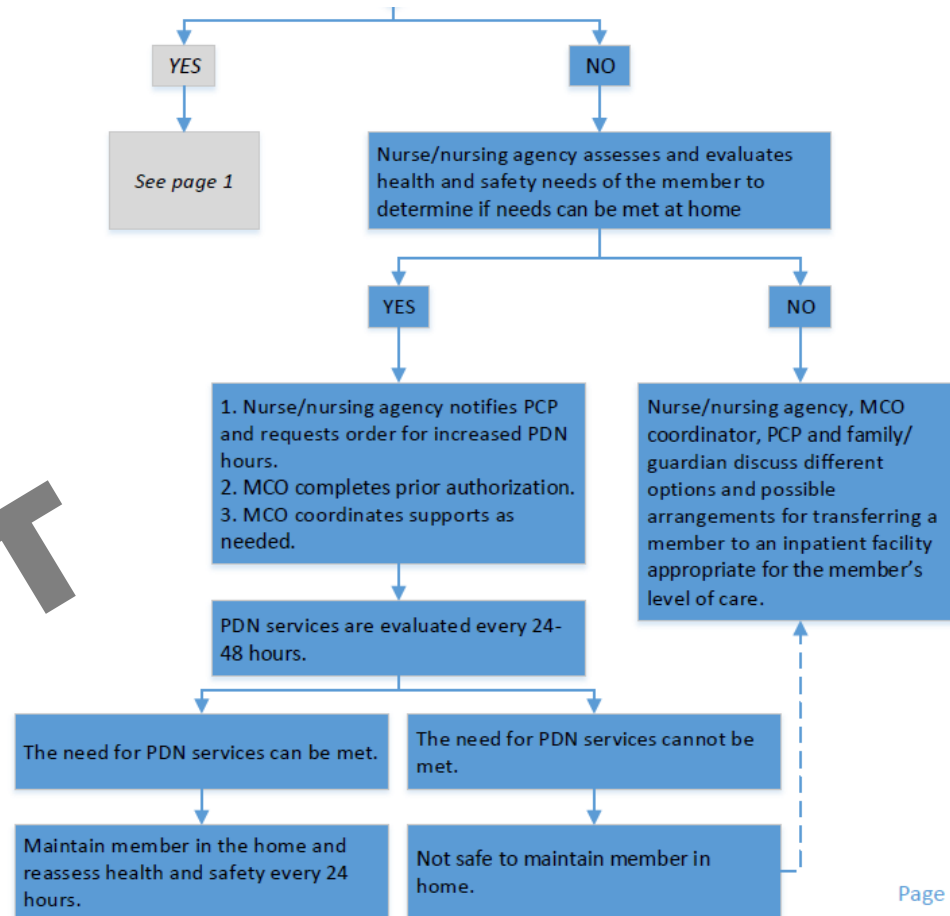


**DRAFT**



# Private Duty Nursing Emergent Care Decision Tree

October 10, 2019



**DRAFT**



# DATA WORK GROUP

# QUARTERLY REPORT

PERIOD ENDING SEPTEMBER 30, 2019

## QUARTER 3 ACTIVITIES

- Met biweekly
- Reviewed MCO PDN gaps in care data
- Completed collection of demographic data and utilization data for CY 2014-2017 and initial analysis
- Secured Vital Research to conduct family focus groups and survey

## KEY ISSUES TO NOTE

- Findings from demographic and utilization data trend analysis
- Continued review of MCO PDN gaps in care data

## UPCOMING ACTIVITIES

- Develop and implement family focus groups and survey
- Begin analysis of MCO PDN gaps in care data
- Complete collection/analysis of demographic and utilization data for CY 2014-2017
- Upcoming meetings: 10/22, 11/5

### 2019 Q1

- Identify CMC population
- Present initial data to Advisory Committee
- Draft elements for MCO PDN gaps in care analysis

### 2019 Q2

- MCOs complete PDN gaps in care analysis. Workgroup reviews results
- Present initial summary to Advisory Committee
- Analysis of CY 2017 demographic and utilization data

### 2019 Q3

- Secure resource for family focus groups and survey
- Reviewed MCO PDN gaps in care data
- Continue analysis of demographic and utilization data

### 2019 Q4

- Continue analysis of MCO PDN gaps in care data
- Develop and implement family focus groups and survey
- Continue analysis of demographic and utilization data
- Present updates





---

# **DATA UPDATE**

## **CMCAC DATA WORKGROUP Q3 REPORT**



---

# **PRIVATE DUTY NURSING GAPS IN CARE UPDATE**



---

# **PUBLIC COMMENT**

